



BEEF & VEAL MARKET SITUATION



Civil Dialog Group
30 November 2016

LIVESTOCK

EU EVOLUTION TOTAL BOVINE

JUNE SURVEY



European
Commission

May/Jun 1000 Hd	TOT LIVESTOCK				%Var 2016 2015	BOVINE < 1 Year				%Var 2016 2015	BOVINE 1-2 Year				%Var 2016 2015	BOVINE > 2 Year				%Var 2016 2015
	2013	2014	2015	2016		2013	2014	2015	2016		2013	2014	2015	2016		2013	2014	2015	2016	
BE	2 433	2 521	2 531	2 470	-2.4%	689	734	744	728	-2.1%	495	506	504	493	-2.2%	1 248	1 282	1 283	1 248	-2.7%
BG																				
CZ																				
DK	1 603	1 585	1 568	1 583	+1.0%	523	528	524	547	+4.4%	328	318	316	307	-2.8%	752	739	728	730	+0.3%
DE	12 587	12 702	12 653	12 563	-0.7%	3 849	3 874	3 846	3 805	-1.1%	3 011	3 004	3 002	2 983	-0.6%	5 727	5 824	5 805	5 775	-0.5%
EE																				
IE	6 903	6 926	6 964	7 221	+3.7%	1 968	1 878	2 042	2 126	+4.1%	1 811	1 767	1 705	1 853	+8.7%	3 123	3 280	3 216	3 242	+0.8%
EL																				
ES	5 822	6 008	6 234	6 445	+3.4%	2 026	2 172	2 281	2 404	+5.4%	801	795	898	899	+0.1%	2 995	3 041	3 055	3 142	+2.9%
FR	19 179	19 286	19 463	19 559	+0.5%	5 497	5 530	5 603	5 638	+0.6%	3 529	3 476	3 540	3 561	+0.6%	10 153	10 280	10 319	10 362	+0.4%
HR																				
IT	6 053	6 197	6 146	6 183	+0.6%	1 587	1 703	1 670	1 702	+1.9%	1 480	1 445	1 370	1 502	+9.7%	2 986	3 049	3 107	2 979	-4.1%
CY																				
LV																				
LT																				
LU																				
HU																				
MT																				
NL	4 000	4 068	4 134	4 244	+2.7%	1 616	1 643	1 624	1 691	+4.1%	624	634	672	630	-6.3%	1 759	1 791	1 838	1 923	+4.7%
AT	1 939	1 937	1 950	1 933	-0.9%	604	613	622	605	-2.7%	435	424	437	441	+0.8%	900	901	891	887	-0.5%
PL	5 860	5 920	5 961	5 939	-0.4%	1 586	1 609	1 669	1 728	+3.6%	1 422	1 433	1 529	1 576	+3.1%	2 852	2 879	2 763	2 635	-4.6%
PT																				
RO	2 054	2 069	2 078	2 081	+0.2%	478	479	477	481	+0.9%	236	236	235	240	+2.3%	1 340	1 354	1 366	1 360	-0.4%
SI																				
SK																				
FI																				
SE	1 506	1 493	1 476	1 489	+0.9%	468	472	466	475	+2.0%	381	370	372	375	+0.8%	657	651	638	639	+0.1%
UK	9 843	9 837	9 919	10 019	+1.0%	2 808	2 801	2 912	2 984	+2.5%	2 474	2 384	2 380	2 449	+2.9%	4 561	4 652	4 626	4 587	-0.8%
EU	79 781	80 550	81 076	81 730	+0.8%	23 698	24 035	24 481	24 915	+1.8%	17 027	16 792	16 959	17 308	+2.1%	39 055	39 722	39 635	39 509	-0.3%

Source : EStat Newcronos

EU %Var is calculated considering only countries available in 2015 AND 2016

17 November 2016

Agriculture
and Rural
Development

LIVESTOCK

EU EVOLUTION TOTAL BOVINE

JUNE SURVEY



European
Commission

May/Jun 1000 Hd	TOTAL COWS				%Var 2016 2015	DAIRY COWS				%Var 2016 2015	OTHER COWS				%Var 2016 2015
	2013	2014	2015	2016		2013	2014	2015	2016		2013	2014	2015	2016	
BE	1 007	971	987	971	-1.6%	510	522	524	522	-0.4%	498	449	463	449	-3.0%
BG															
CZ															
DK	678	664	661	669	+1.2%	576	563	561	572	+2.0%	102	101	99	97	-2.0%
DE	4 896	4 981	4 969	4 957	-0.2%	4 223	4 311	4 287	4 272	-0.3%	673	670	682	685	+0.4%
EE															
IE	2 313	2 355	2 372	2 502	+5.5%	1 163	1 226	1 296	1 398	+7.9%	1 150	1 129	1 076	1 104	+2.6%
EL															
ES	2 595	2 716	2 678	2 810	+4.9%	823	876	853	827	-3.0%	1 772	1 840	1 825	1 983	+8.7%
FR	7 682	7 759	7 809	7 838	+0.4%	3 545	3 615	3 606	3 576	-0.8%	4 137	4 144	4 203	4 263	+1.4%
HR															
IT	2 381	2 382	2 375	2 245	-5.5%	1 989	2 053	2 061	1 948	-5.5%	392	329	314	297	-5.4%
CY															
LV															
LT															
LU															
HU															
MT															
NL	1 637	1 655	1 702	1 811	+6.4%	1 553	1 572	1 622	1 743	+7.5%	84	82	80	68	-15.4%
AT	769	770	762	755	-0.9%	524	534	540	536	-0.6%	245	236	222	218	-1.8%
PL	2 531	2 479	2 444	2 332	-4.6%	2 361	2 310	2 279	2 146	-5.8%	170	169	165	186	+12.6%
PT															
RO	1 222	1 224	1 233	1 228	-0.4%	1 208	1 207	1 216	1 216	-0.0%	13	17	17	12	-29.4%
SI															
SK															
FI															
SE	539	531	523	525	+0.4%	346	344	338	331	-2.2%	193	186	184	194	+5.1%
UK	3 393	3 411	3 472	3 490	+0.5%	1 782	1 841	1 895	1 895	idem	1 611	1 569	1 576	1 594	+1.1%
EU	31 642	31 899	31 987	32 132	+0.5%	20 603	20 976	21 078	20 981	-0.5%	11 040	10 922	10 907	11 150	+2.2%

Source : EStat Newcronos

EU %Var is calculated considering only countries available in 2015 AND 2016

17 November 2016

LIVESTOCK

EU EVOLUTION TOTAL BOVINE

DECEMBER SURVEY



European
Commission

Dec 1000 Hd	TOTAL LIVESTOCK				%Var 2015 2014	BOVINE < 1 Year				%Var 2015 2014	BOVINE 1-2 Year				%Var 2015 2014	BOVINE > 2 Year				%Var 2015 2014
	2012	2013	2014	2015		2012	2013	2014	2015		2012	2013	2014	2015		2012	2013	2014	2015	
BE	2 438	2 441	2 477	2 503	+1.1%	733	718	745	749	+0.5%	484	490	490	493	+0.7%	1 222	1 234	1 243	1 261	+1.5%
BG	535	586	562	561	-0.3%	121	150	121	109	-9.9%	64	62	65	64	-2.3%	350	374	376	388	+3.1%
CZ	1 321	1 332	1 373	1 366	-0.5%	395	390	413	403	-2.2%	298	300	311	309	-0.7%	628	642	649	654	+0.7%
DK	1 607	1 583	1 553	1 566	+0.8%	545	528	534	538	+0.7%	314	319	307	302	-1.6%	748	736	713	726	+1.8%
DE	12 507	12 686	12 742	12 635	-0.8%	3 868	3 878	3 909	3 836	-1.9%	2 940	3 015	3 011	2 993	-0.6%	5 699	5 793	5 823	5 806	-0.3%
EE	246	261	265	256	-3.2%	66	71	73	70	-3.8%	50	54	54	53	-2.8%	131	137	138	133	-3.1%
IE	6 253	6 309	6 243	6 422	+2.9%	1 987	1 893	1 886	2 026	+7.4%	1 617	1 714	1 649	1 660	+0.7%	2 650	2 701	2 709	2 737	+1.0%
EL	685	653	659	643	-2.4%	202	167	176	168	-4.5%	131	129	119	113	-5.0%	351	357	365	363	-0.5%
ES	5 813	5 802	6 079	6 183	+1.7%	2 122	2 068	2 302	2 325	+1.0%	714	735	746	786	+5.4%	2 977	2 999	3 031	3 072	+1.4%
FR	19 052	19 129	19 271	19 386	+0.6%	5 541	5 453	5 546	5 597	+0.9%	3 378	3 441	3 418	3 461	+1.3%	10 133	10 235	10 307	10 328	+0.2%
HR	452	442	441	458	+3.9%	143	145	132	148	+12.1%	101	92	88	88	idem	208	205	221	222	+0.5%
IT	6 252	6 249	6 125	6 156	+0.5%	1 598	1 680	1 654	1 678	+1.5%	1 421	1 457	1 366	1 379	+1.0%	3 072	3 112	3 106	3 099	-0.2%
CY	57	57	60	61	+3.1%	21	21	22	23	+3.1%	10	9	10	10	+2.0%	26	27	28	29	+3.8%
LV	393	406	422	419	-0.7%	108	109	118	114	-4.0%	70	75	75	76	+1.8%	215	222	229	229	+0.2%
LT	729	714	737	723	-1.9%	193	187	192	185	-3.6%	145	144	149	152	+1.7%	391	383	395	385	-2.5%
LU	188	198	201	201	-0.3%	52	55	54	54	-1.5%	43	45	47	45	-4.0%	93	98	100	102	+2.1%
HU	760	782	802	821	+2.4%	213	212	219	220	+0.5%	159	179	176	180	+2.3%	389	393	407	421	+3.4%
MT	16	15	15	15	+0.9%	5	4	4	4	-6.9%	4	4	3	4	+15.1%	7	7	7	7	-0.6%
NL	3 985	4 090	4 169	4 315	+3.5%	1 623	1 653	1 676	1 707	+1.8%	603	627	657	660	+0.5%	1 760	1 810	1 836	1 948	+6.1%
AT	1 956	1 958	1 961	1 958	-0.2%	629	627	629	624	-0.8%	424	435	432	439	+1.5%	903	897	899	894	-0.6%
PL	5 520	5 590	5 660	5 762	+1.8%	1 388	1 409	1 450	1 617	+11.5%	1 324	1 372	1 445	1 532	+6.0%	2 809	2 809	2 765	2 614	-5.5%
PT	1 498	1 471	1 549	1 591	+2.7%	451	425	487	500	+2.7%	206	211	214	238	+11.2%	840	834	848	853	+0.6%
RO	2 009	2 022	2 069	2 051	-0.9%	458	454	463	459	-0.9%	235	238	254	251	-1.1%	1 316	1 331	1 352	1 341	-0.9%
SI	460	461	468	484	+3.4%	147	144	148	152	+3.2%	120	123	122	129	+5.7%	193	194	198	202	+2.0%
SK	471	468	466	457	-1.7%	136	133	130	130	+0.3%	95	98	93	91	-1.8%	240	238	243	236	-2.8%
FI	901	903	907	903	-0.4%	301	302	307	308	+0.3%	225	224	223	221	-0.6%	376	378	378	374	-1.0%
SE	1 444	1 444	1 436	1 428	-0.6%	475	469	473	467	-1.3%	338	342	334	342	+2.3%	630	632	629	619	-1.5%
UK	9 749	9 682	9 693	9 789	+1.0%	2 921	2 803	2 842	2 955	+4.0%	2 395	2 411	2 332	2 328	-0.2%	4 433	4 468	4 520	4 506	-0.3%
EU	87 297	87 734	88 406	89 114	+0.8%	26 441	26 148	26 705	27 166	+1.7%	17 907	18 342	18 189	18 399	+1.2%	42 789	43 246	43 514	43 550	+0.1%

Source : EStat Newcronos

EU %Var is calculated considering only countries available in 2014 AND 2015

17 November 2016

Agriculture
and Rural
Development



European
Commission

Dec	TOTAL COWS					%Var 2015 2014	DAIRY COWS					%Var 2015 2014	OTHER COWS					%Var 2015 2014
	1000 Hd	2012	2013	2014	2015		2012	2013	2014	2015	2012		2013	2014	2015			
BE	945	945	956	974	+1.9%	504	516	519	529	+1.9%	441	429	436	445	+1.9%			
BG	323	353	351	359	+2.4%	294	313	302	284	-5.9%	29	40	49	75	+53.6%			
CZ	543	553	566	566	+0.0%	367	375	372	369	-0.9%	175	178	194	197	+1.8%			
DK	678	664	643	664	+3.3%	579	567	547	570	+4.2%	100	97	96	94	-2.1%			
DE	4 863	4 941	4 969	4 966	-0.1%	4 190	4 268	4 296	4 285	-0.3%	672	673	674	681	+1.1%			
EE	112	118	118	116	-2.4%	97	98	96	91	-5.3%	15	20	23	25	+10.1%			
IE	2 188	2 168	2 169	2 293	+5.7%	1 060	1 082	1 128	1 240	+9.9%	1 128	1 085	1 041	1 053	+1.1%			
EL	278	289	305	304	-0.3%	132	130	135	129	-4.4%	146	159	169	174	+3.0%			
ES	2 608	2 633	2 669	2 763	+3.5%	827	844	845	844	-0.1%	1 780	1 789	1 824	1 919	+5.2%			
FR	7 757	7 804	7 841	7 867	+0.3%	3 644	3 697	3 699	3 660	-1.1%	4 114	4 106	4 142	4 208	+1.6%			
HR	195	181	180	171	-5.0%	181	168	159	152	-4.4%	14	13	21	19	-9.5%			
IT	2 391	2 410	2 398	2 386	-0.5%	2 009	2 075	2 069	2 057	-0.6%	382	335	329	329	+0.2%			
CY	24	25	25	26	+2.0%	24	25	25	26	+1.9%	0	0	0	0	idem			
LV	190	194	200	201	+0.6%	165	165	166	162	-2.1%	26	29	34	39	+13.6%			
LT	352	345	351	343	-2.1%	331	316	314	301	-4.3%	21	29	37	43	+16.7%			
LU	74	78	75	77	+2.6%	45	48	47	49	+5.0%	29	30	29	28	-1.3%			
HU	339	345	359	368	+2.5%	255	250	255	251	-1.6%	83	96	104	117	+12.5%			
MT	6	6	7	7	-1.5%	6	6	7	6	-2.0%	0	1	0	0	+30.0%			
NL	1 643	1 683	1 694	1 802	+6.4%	1 541	1 597	1 610	1 717	+6.6%	102	86	84	85	+1.2%			
AT	772	766	768	758	-1.2%	523	530	538	539	+0.2%	248	237	230	219	-4.6%			
PL	2 469	2 442	2 403	2 303	-4.2%	2 346	2 299	2 248	2 134	-5.1%	123	143	155	169	+8.7%			
PT	678	677	697	716	+2.8%	237	231	234	241	+3.0%	442	446	463	476	+2.8%			
RO	1 180	1 187	1 207	1 196	-0.9%	1 163	1 169	1 188	1 177	-0.9%	17	18	18	18	idem			
SI	168	166	168	170	+0.9%	111	110	108	113	+4.6%	57	56	60	57	-5.7%			
SK	203	199	202	200	-1.1%	150	145	143	139	-2.7%	53	54	59	60	+2.7%			
FI	336	338	340	339	-0.1%	280	282	283	282	-0.2%	56	56	57	57	+0.6%			
SE	524	522	517	513	-0.9%	346	346	344	337	-2.1%	178	175	173	176	+1.5%			
UK	3 388	3 371	3 419	3 481	+1.8%	1 786	1 817	1 883	1 939	+3.0%	1 603	1 554	1 536	1 543	+0.5%			
EU	35 225	35 401	35 596	35 929	+0.9%	23 193	23 468	23 559	23 622	+0.3%	12 034	11 934	12 037	12 307	+2.2%			

17 November 2016

Source : EStat Newcronos

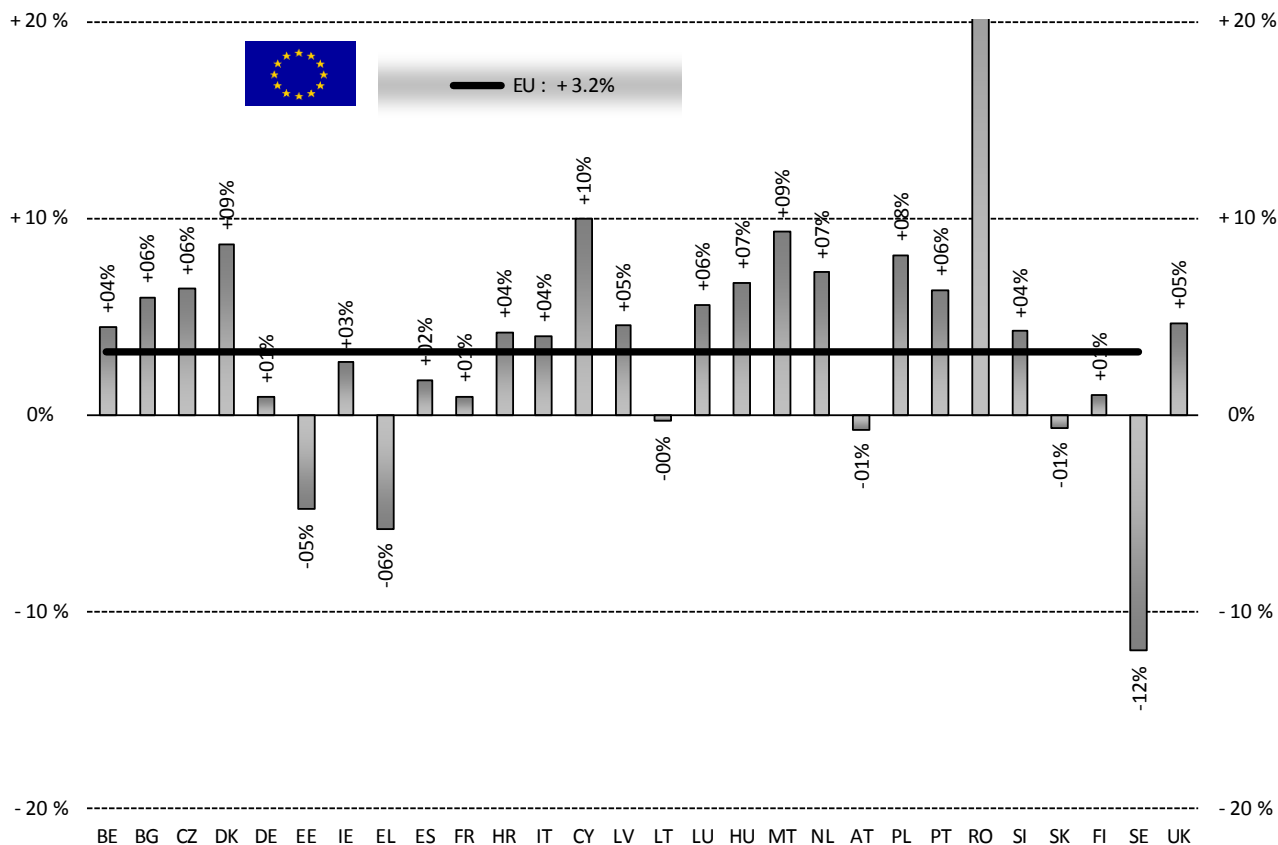
PRODUCTION

% EVOLUTION HEADS



HEADS	Jan-Aug 15/16	
	EU15	EU28
Bull	-2.6%	-1.6%
Bullock	+0.6%	+0.6%
Cow	+6.1%	+7.3%
Heifer	+4.4%	+5.4%
Calve	+3.4%	+3.3%
Young cattle	+2.4%	+3.2%
Meat of bovine animals	+2.5%	+3.2%

Estimates for last month of period



Source: EStat - Newcronos

17 November 2016

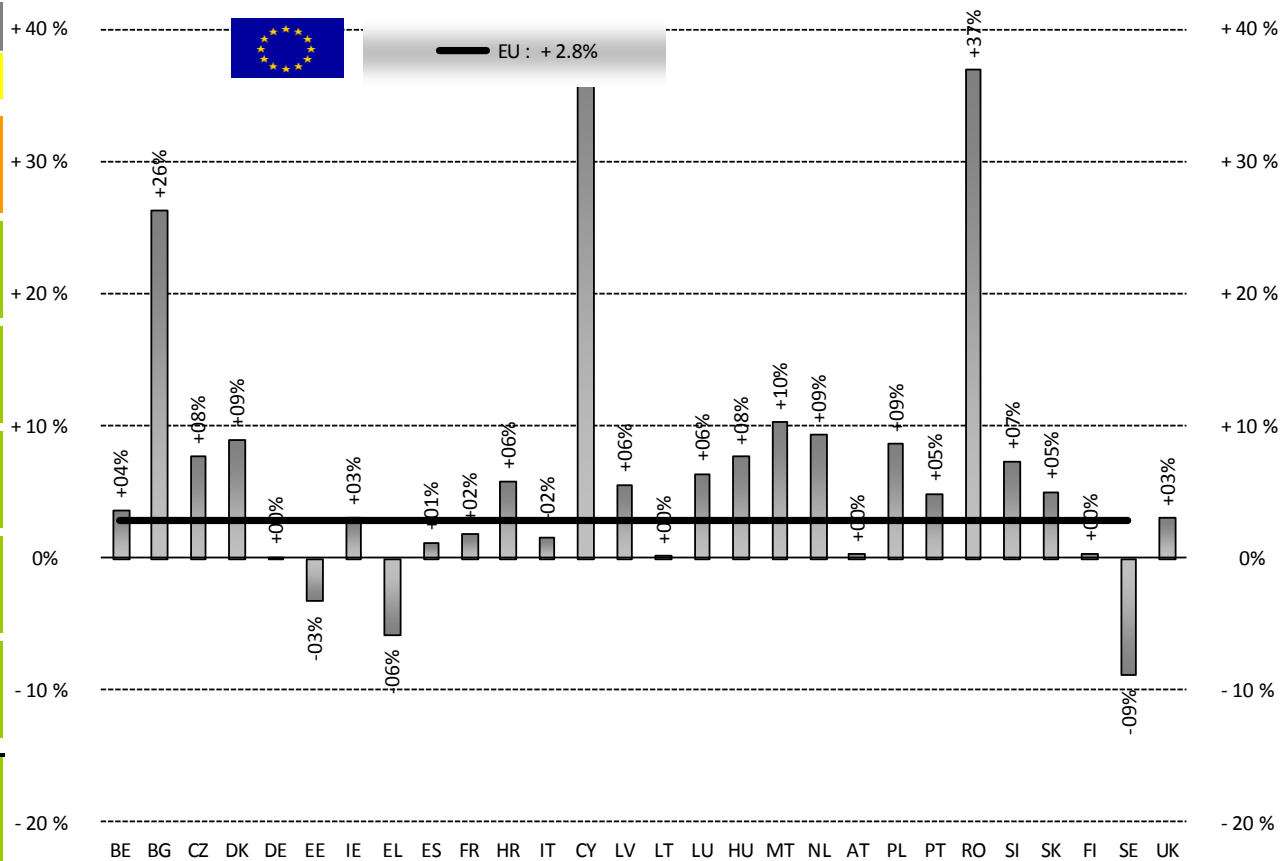
PRODUCTION

% EVOLUTION TONNES



European
Commission

TONNES	Jan-Aug 15/16	
	EU15	EU28
Bull	-2.4%	-1.3%
Bullock	+1.4%	+1.4%
Cow	+5.7%	+6.6%
Heifer	+3.5%	+4.3%
Calve	+4.5%	+4.4%
Young cattle	+2.6%	+3.7%
Meat of bovine animals	+2.1%	+2.8%



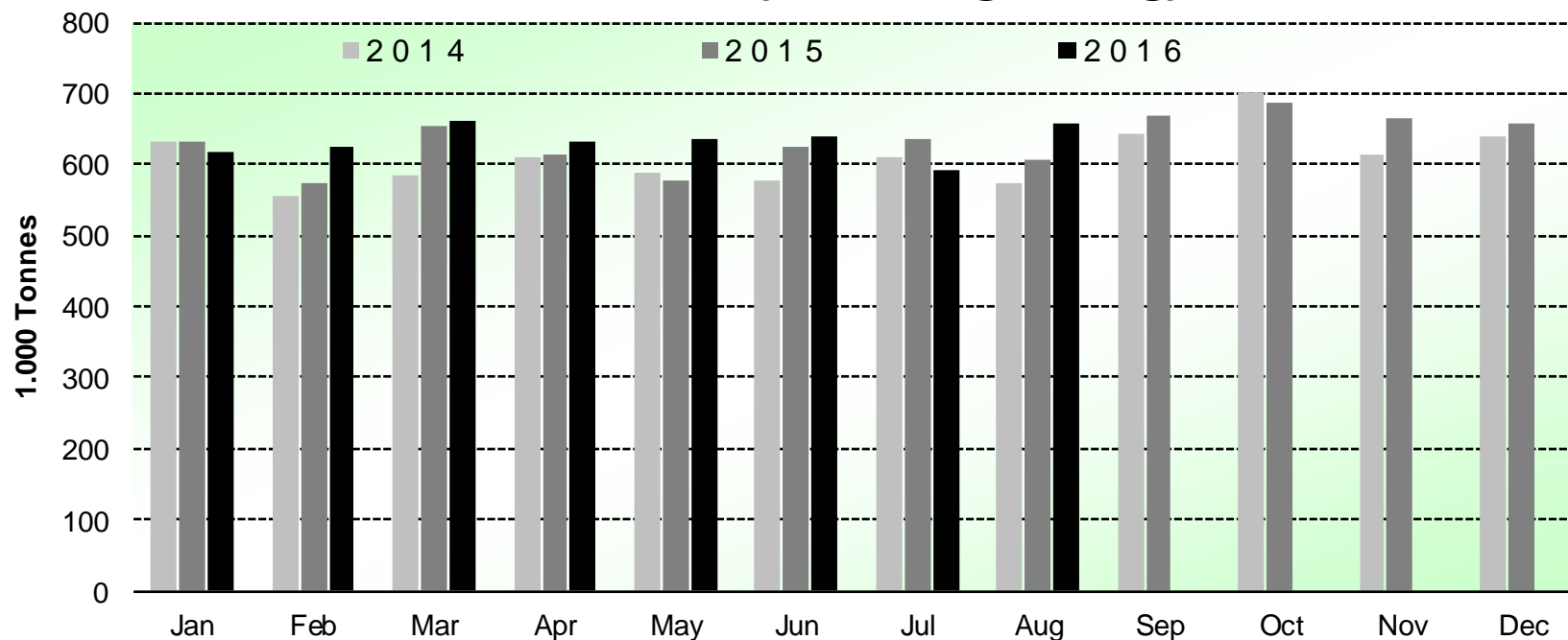
Estimates for last month of period

Source : EStat - Newcronos

17 November 2016



Beef & Veal Production (E28 Slaughtering) - Tonnes



Source : EStat-Newcronos

17 November 2016

PRICES CARCASSES



EU Prices week		44	Evolution since last week	Evolution since last month	Evolution since last year
Carcasse	Average A/C/Z-R3	362.8	+ 0.3%	+ 0.9%	- 5.1%
	Young Bovines (Z)	375.5	+ 0.1%	+ 2.4%	+ 0.1%
	Young Bulls (A)	363.1	+ 0.2%	+ 1.3%	+ 1.7%
	Steers (C)	381.5	+ 0.1%	- 1.1%	- 13.2%
	Cows (D)	261.8	+ 0.3%	- 0.5%	- 7.4%
	Heifers (E)	373.7	- 0.1%	- 0.1%	- 5.1%
Live Animals	Male Calves Dairy Type	78.11	- 0.1%	- 4.0%	- 7.5%
	Male Calves Beef Type	198.1	+ 0.4%	- 6.8%	+ 0.4%
	Young Store Cattle	2.27	- 0.2%	- 0.4%	- 8.4%
	Yearling Male Store Cattle	2.11	- 1.1%	- 1.7%	- 11.7%
	Yearling Female Store Cattle	2.15	- 0.7%	- 2.3%	- 7.2%
	Calves slaughtered <8M	507.2	+ 1.6%	+ 3.9%	- 3.4%

Sources : MSs notifications (Regulation (EC) 1249/2008 and 807/2013)

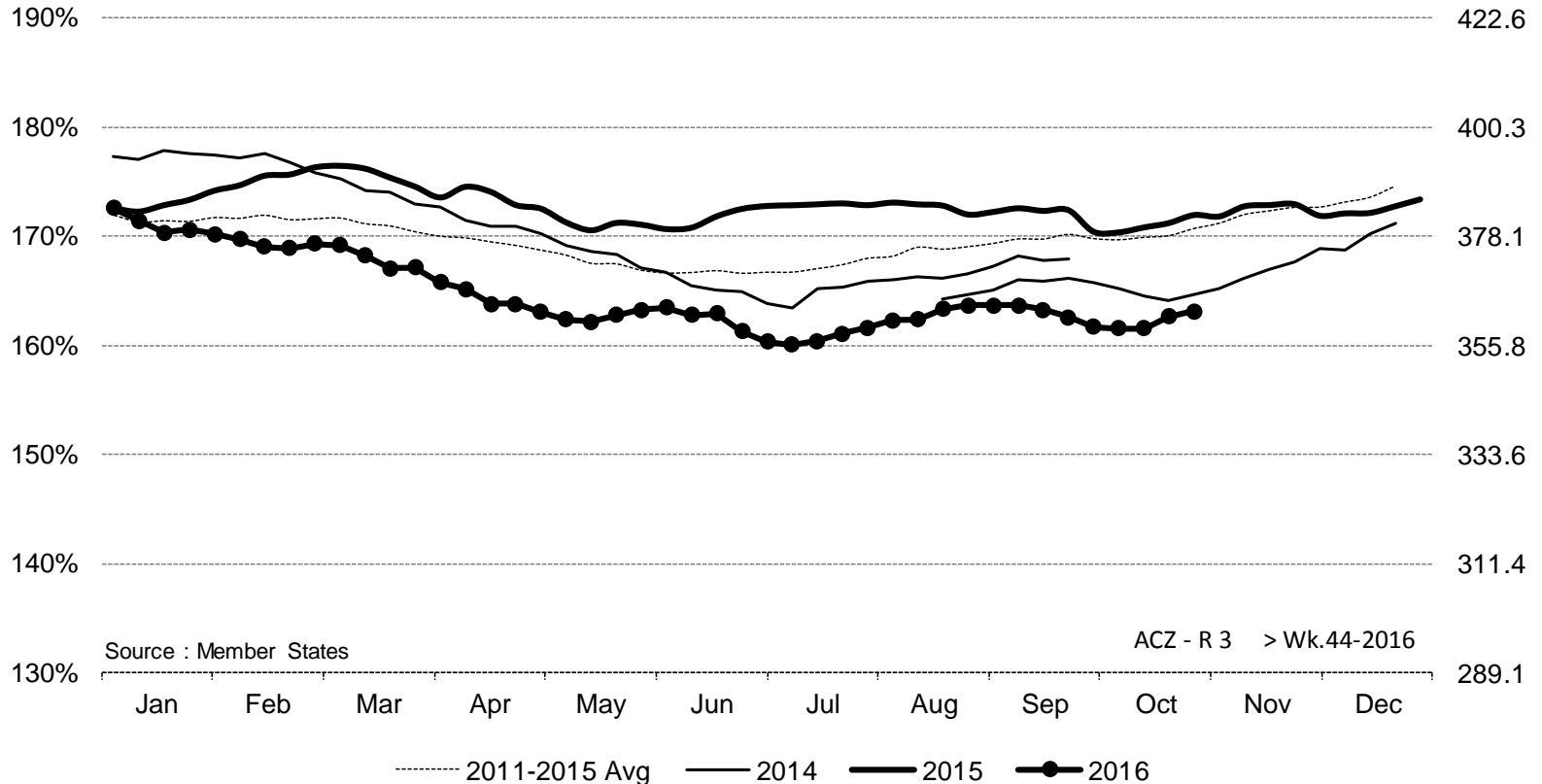
17 November 2016



ACZ - R 3 > Wk.44-2016

% of Reference Price

€/100 kg cwe



Price in week 44 : **362.87**

% change y/y : **- 5.1%**

% Ref. Price in wk 44 : **163.2%**

Average price in October 2016 : **360.22**

% change y/y : **- 5.3%**

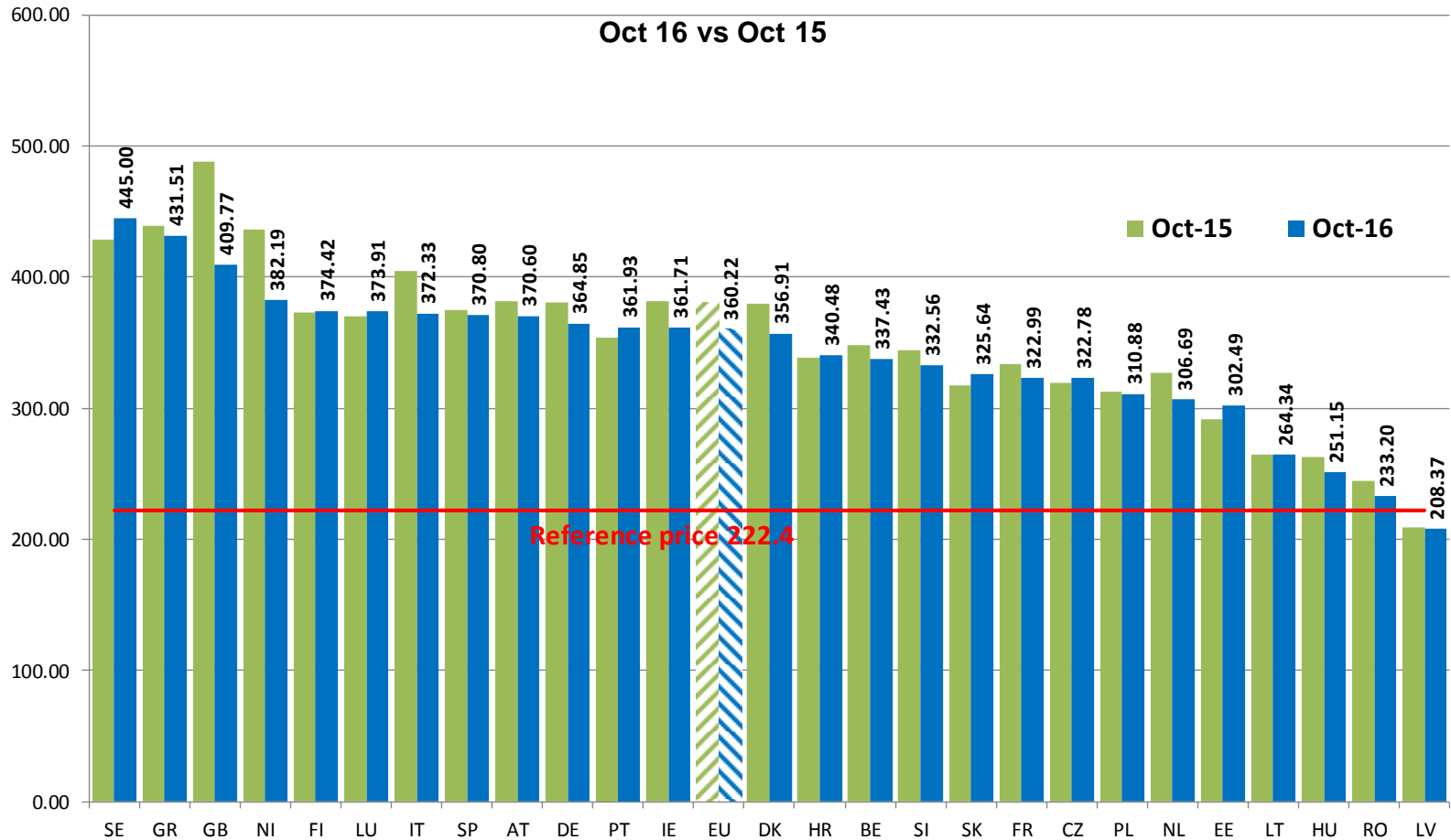
17 November 2016



EU Beef prices ACZ - R3

Oct 16 vs Oct 15

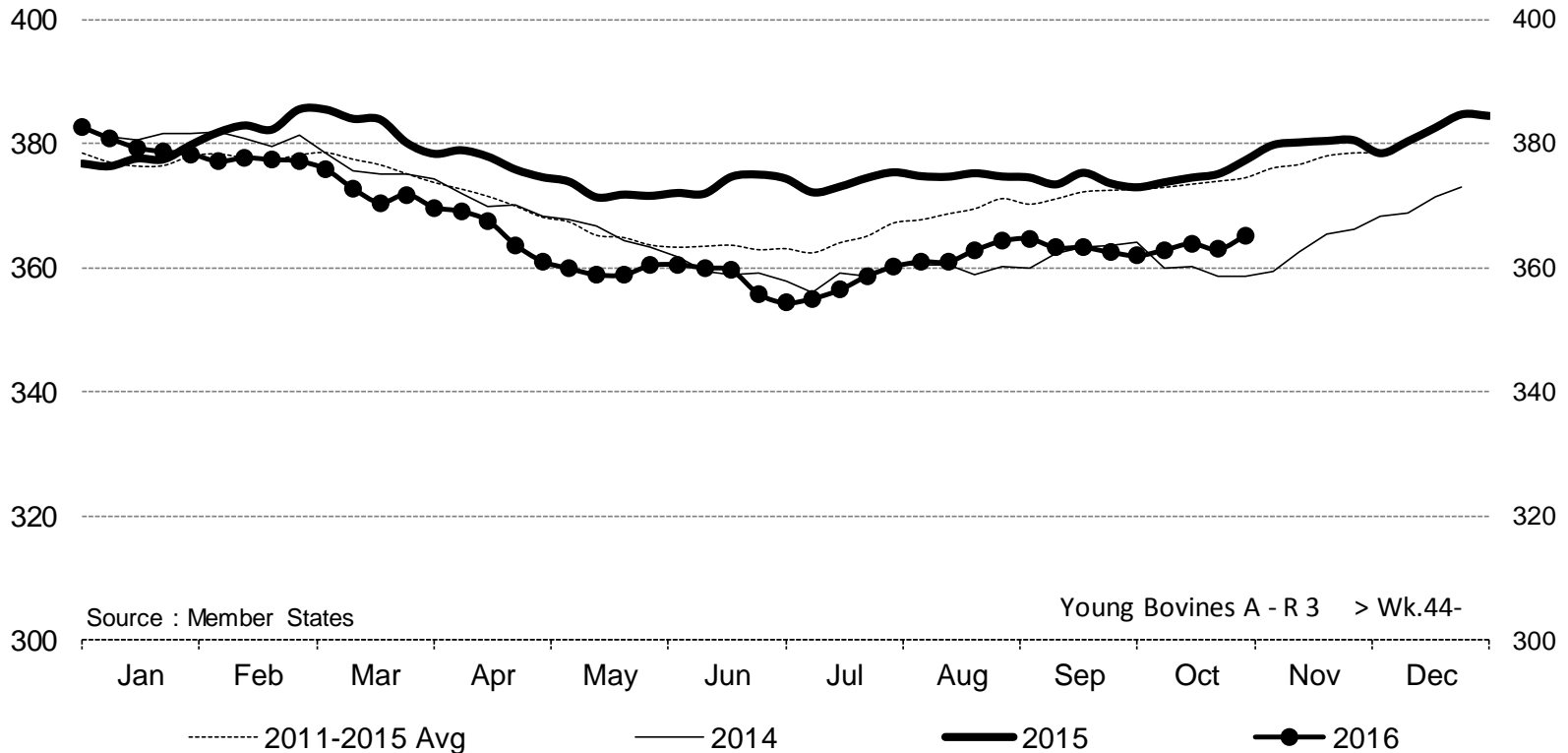
€/ 100 kg



17 November 2016



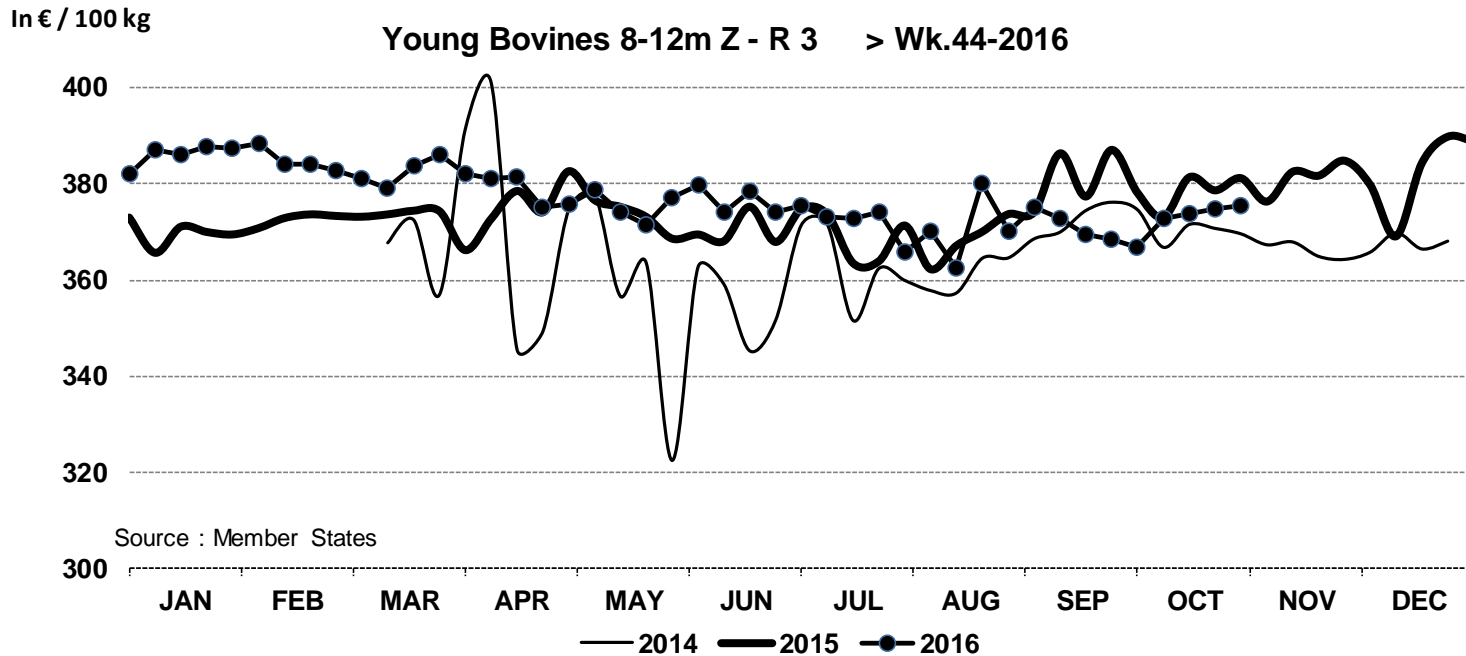
Young Bovines A - R 3 > Wk.44-2016



Price in week 44 : **365.26**
% change y/y : **- 3.2%**

Average price in October 2016 : **362.99**
% change y/y : **- 3.2%**

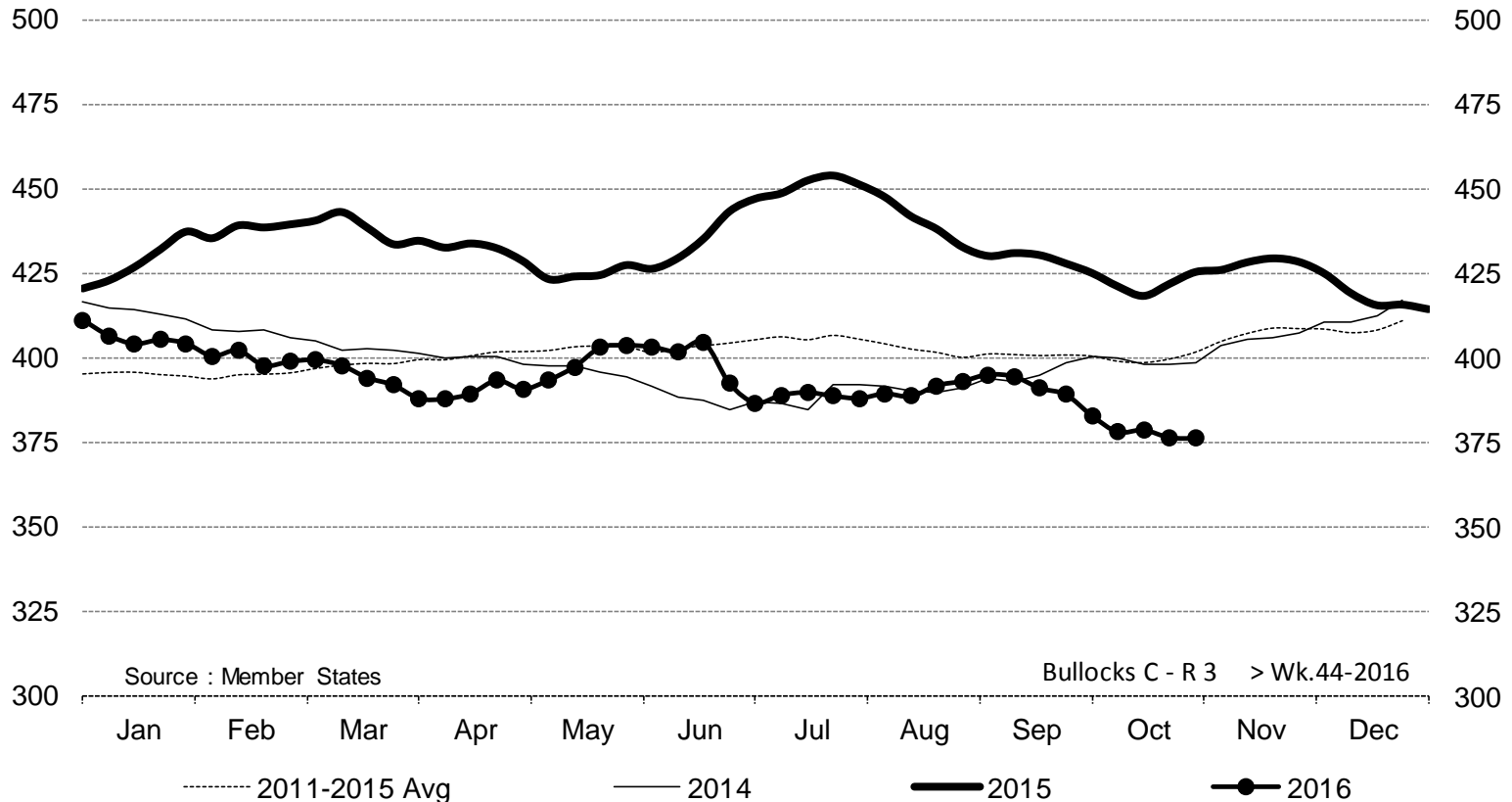
17 November 2016



Price in week 44 : **375.55**
% change y/y : **- 1.5%**

Average price in October 2016 : **371.86**
% change y/y : **- 1.7%**

Bullocks C - R 3 > Wk.44-2016



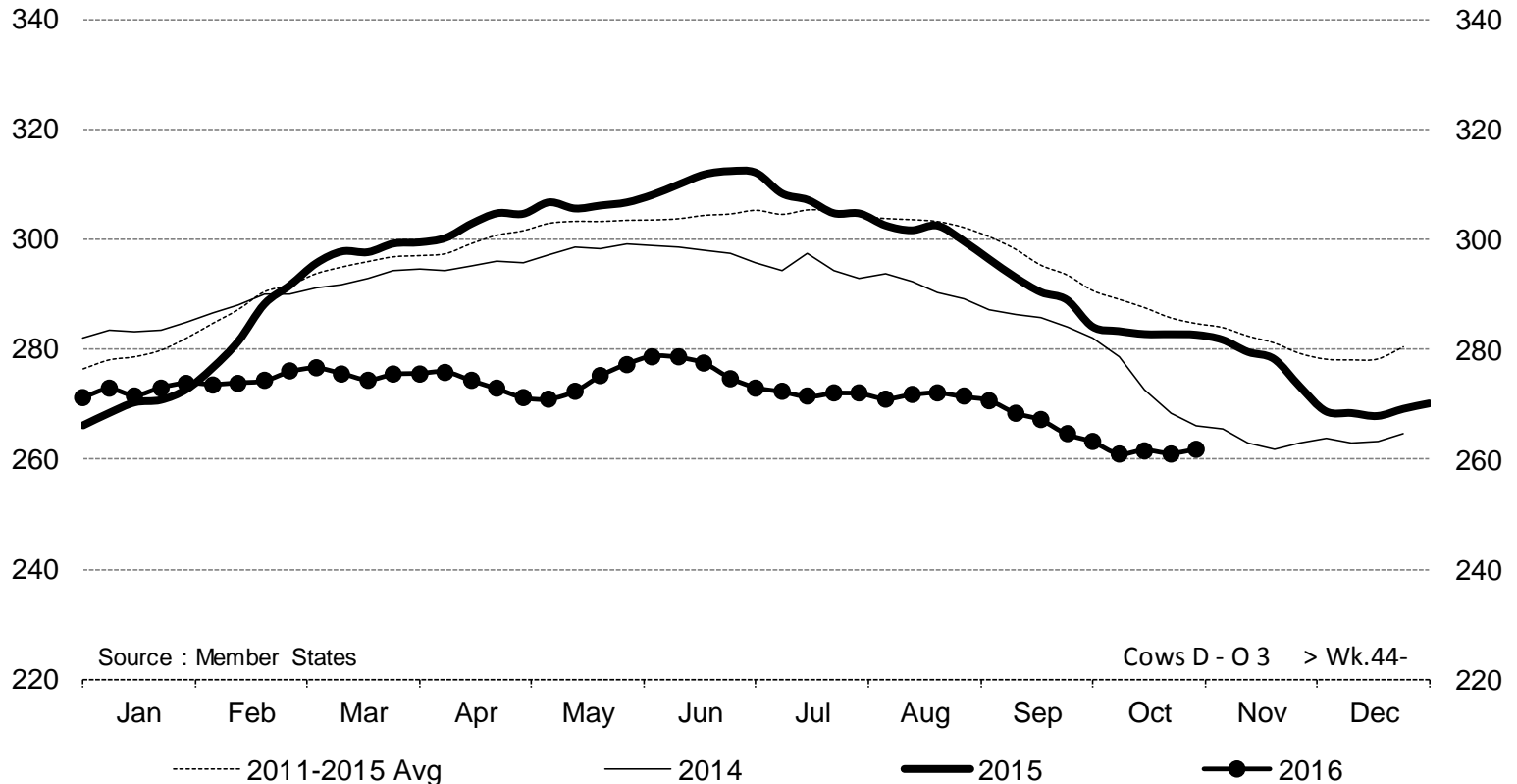
Price in week 44 : **376.09**
% change y/y : **- 11.6%**

Average price in October 2016 : **379.48**
% change y/y : **- 10.1%**

17 November 2016



Cows D - O 3 > Wk.44-2016

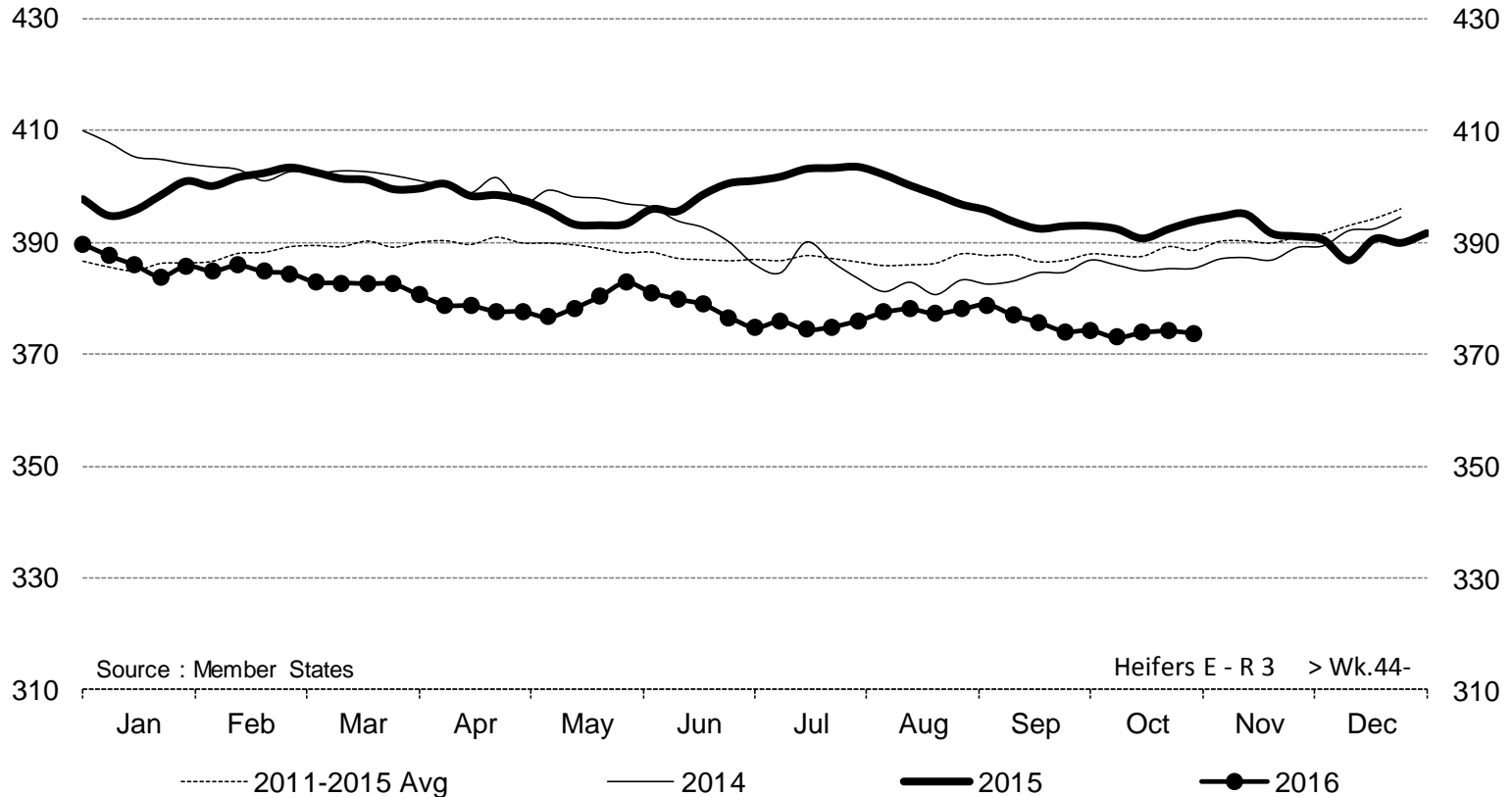


Price in week 44 :	261.83	Average price in October 2016 :	261.91
% change y/y :	- 7.4%	% change y/y :	- 7.5%

17 November 2016



Heifers E - R 3 > Wk.44-2016

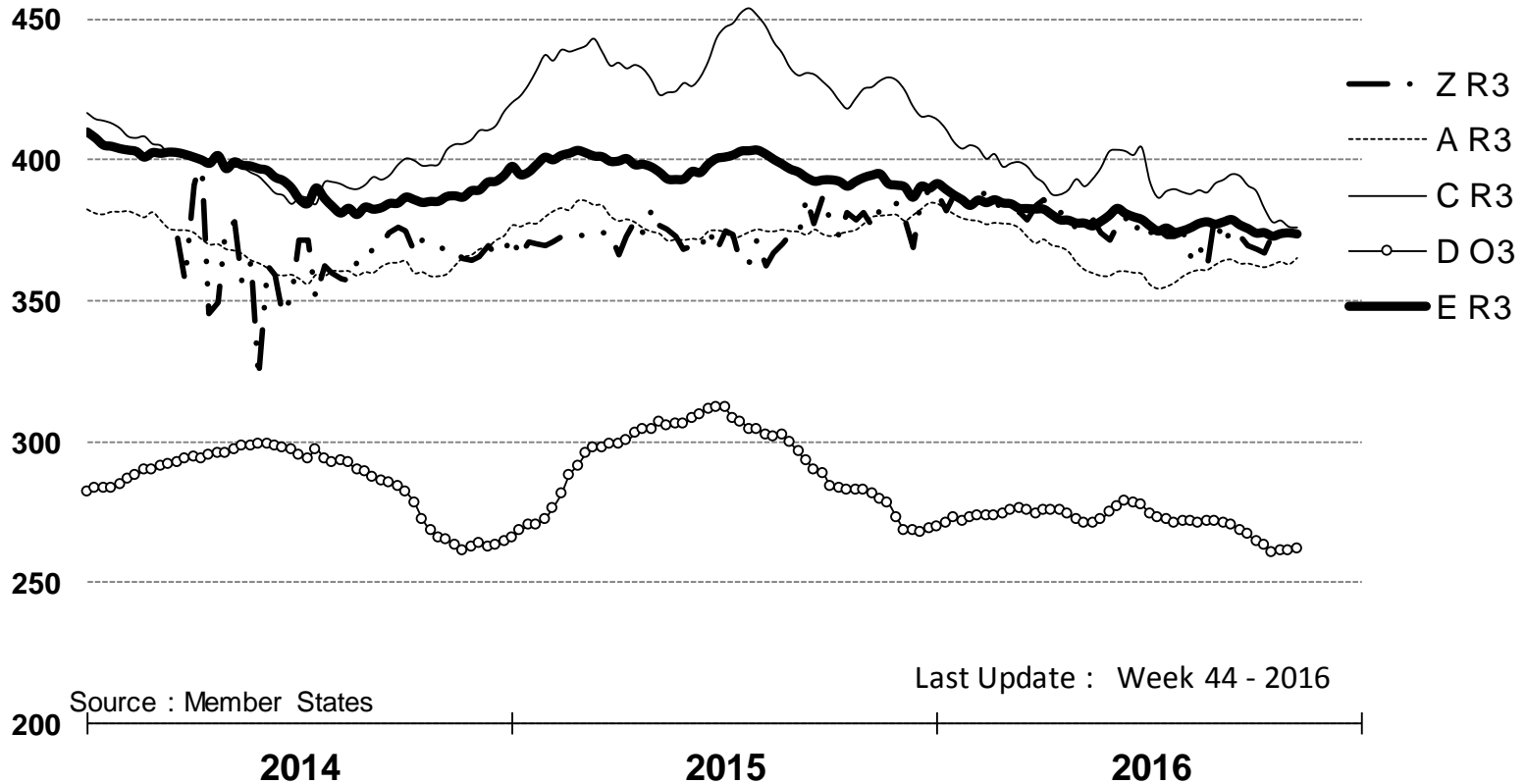


Price in week 44 :	373.76	Average price in October 2016 :	373.84
% change y/y :	- 5.1%	% change y/y :	- 4.7%

17 November 2016

PRICES CARCASSES

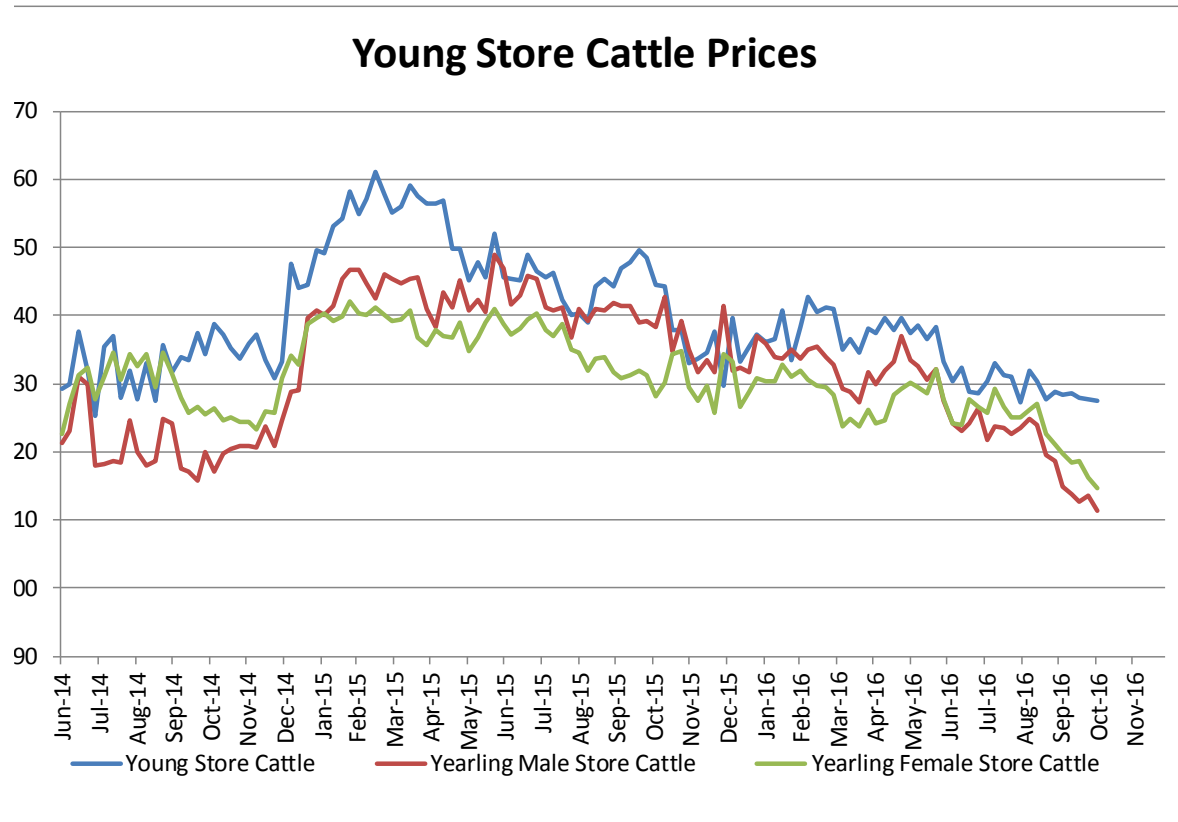
EU EVOLUTION All CAT GLOBAL VIEW



17 November 2016



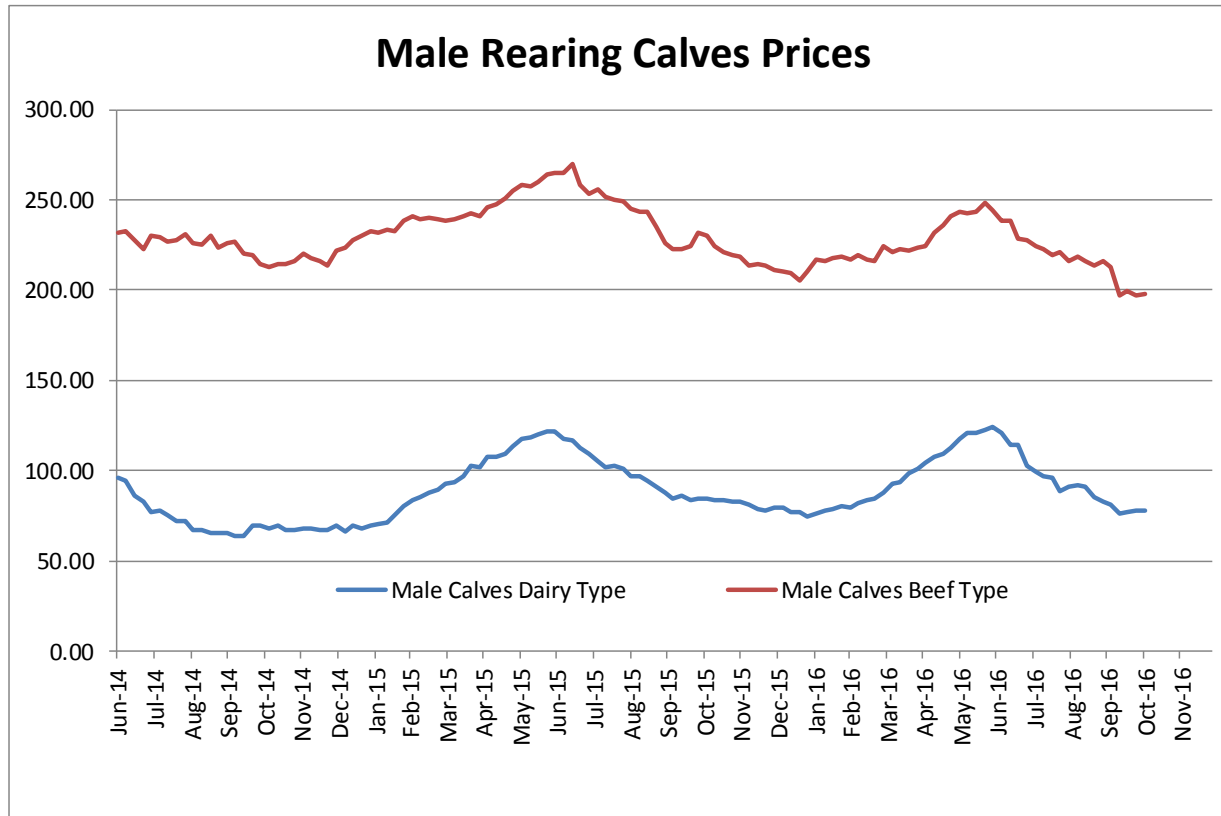
Store cattle (€/100 kg live weight)



Young Store Cattle Price in	Week 44	2.27	Yearling Male Store Cattle Price	2.11
	Change y/y	-8.44%	Change y/y	-11.67%
Yearling Female Store Cattle Price		2.15		
	Change y/y	-7.21%		

17 November 2016

Male calves aged between 8 days and 4 weeks (€/head)



Male Rearing Calves Beef type

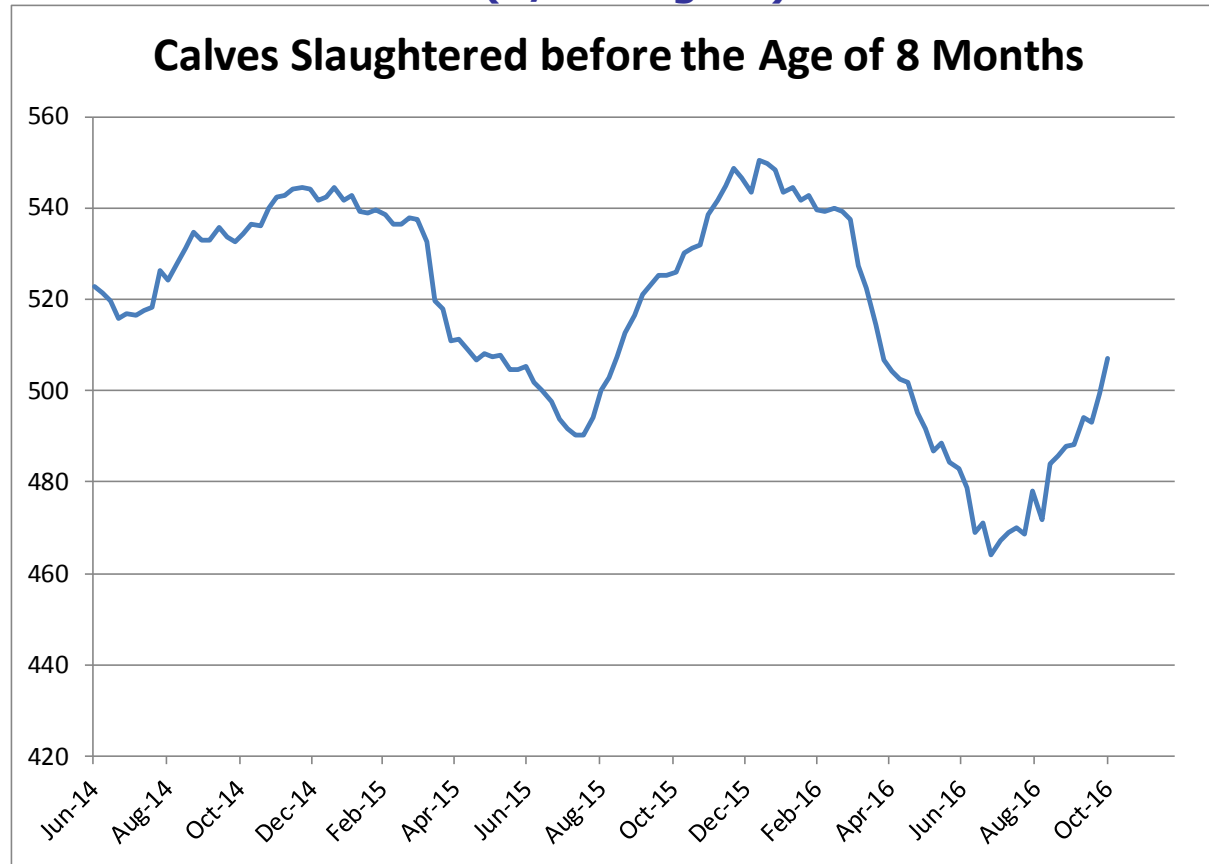
Price in Week 44 **198.13**
Change y/y -14.69%

Male Rearing Calves Dairy type

Price in Week 44 **78.11**
Change y/y -7.46%

17 November 2016

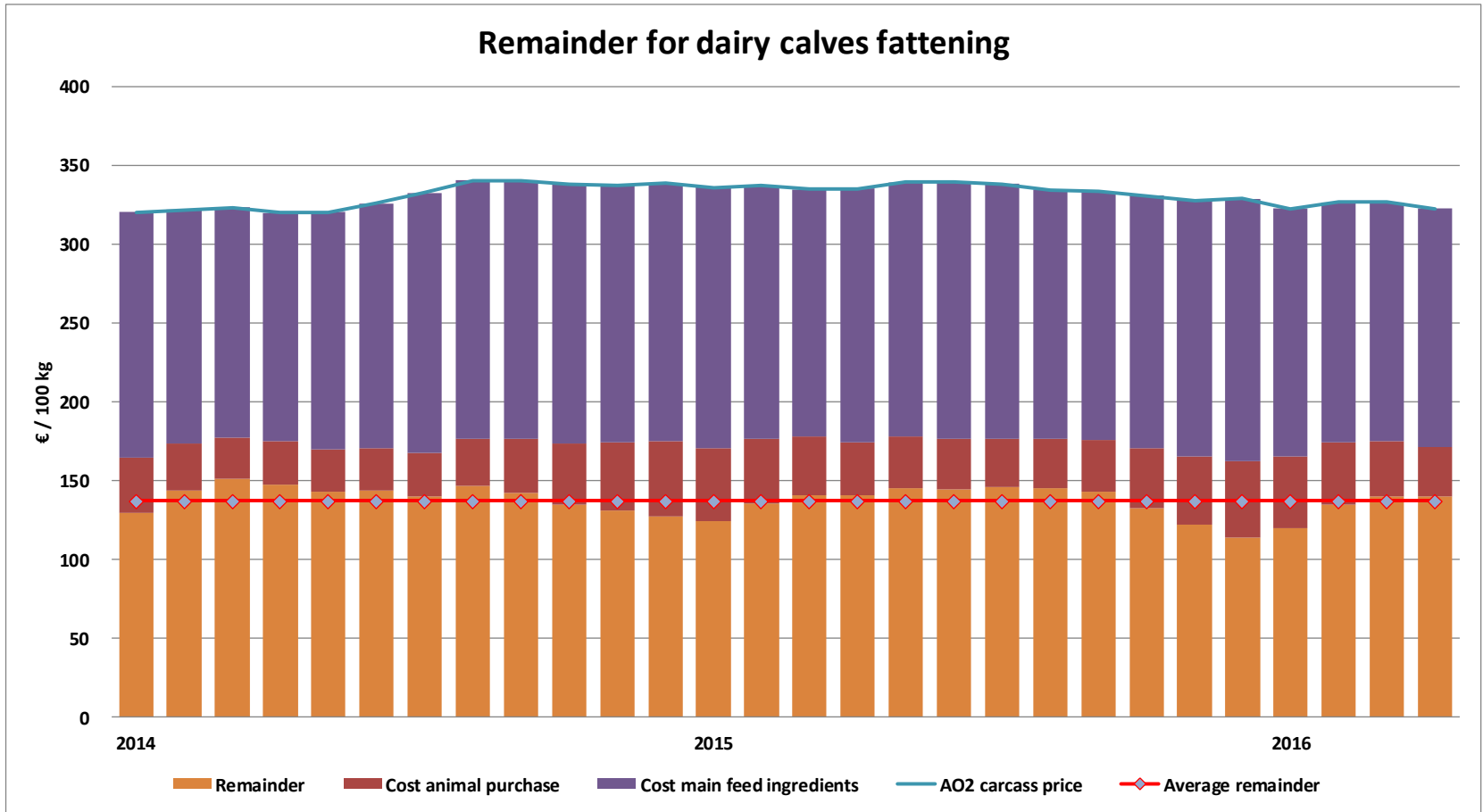
Calves slaughtered before the age of less than 8 months (€/100 kg cw)



Price in Week 44 **507.24 € / 100 kg of carcasse weight**
Change y/ -3.41%

17 November 2016

REMAINDERS

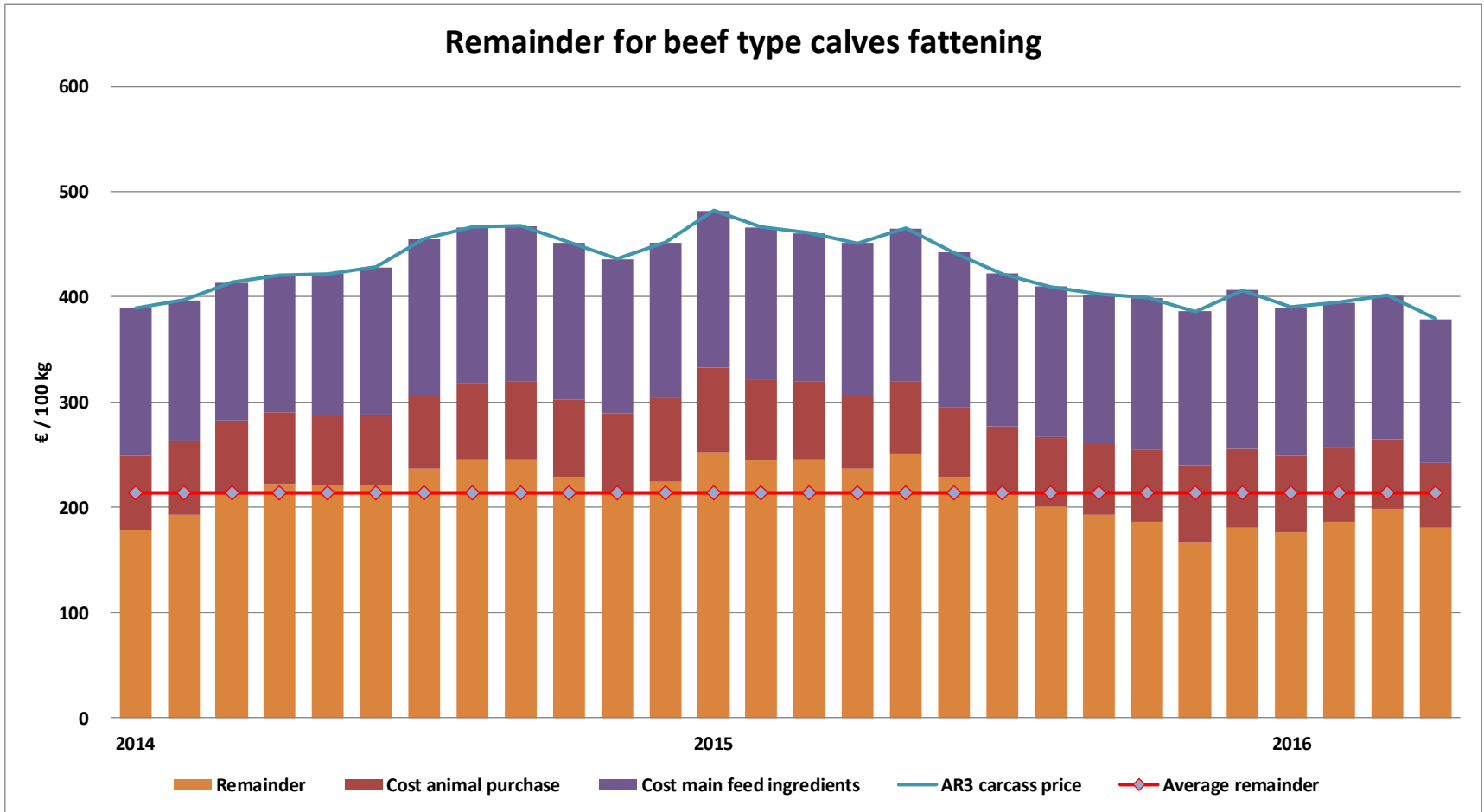


17 November 2016

REMAINDERS



Remainder for beef calves fattening

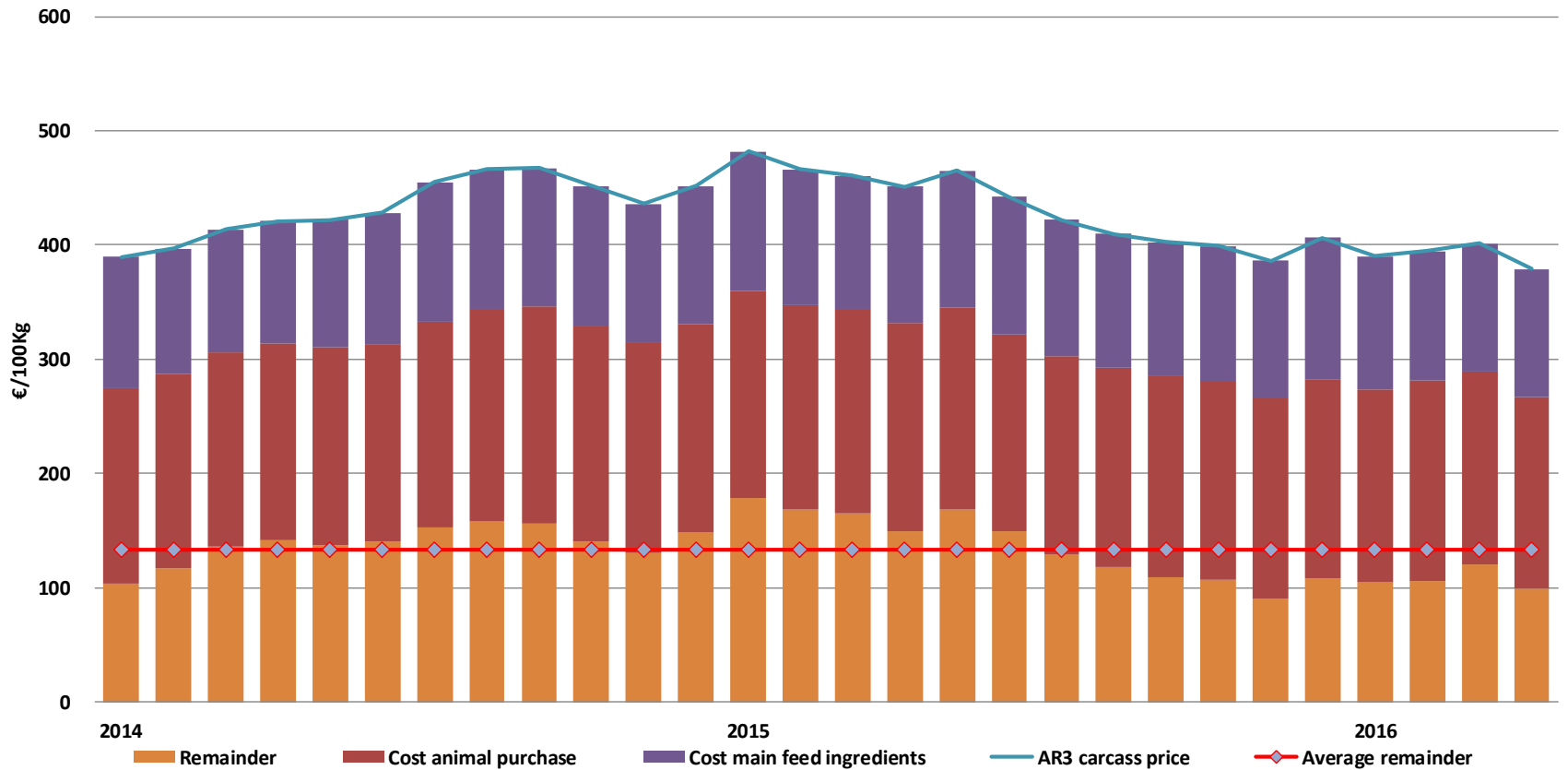


17 November 2016

REMAINDERS



Remainder for young store cattle fattening



17 November 2016

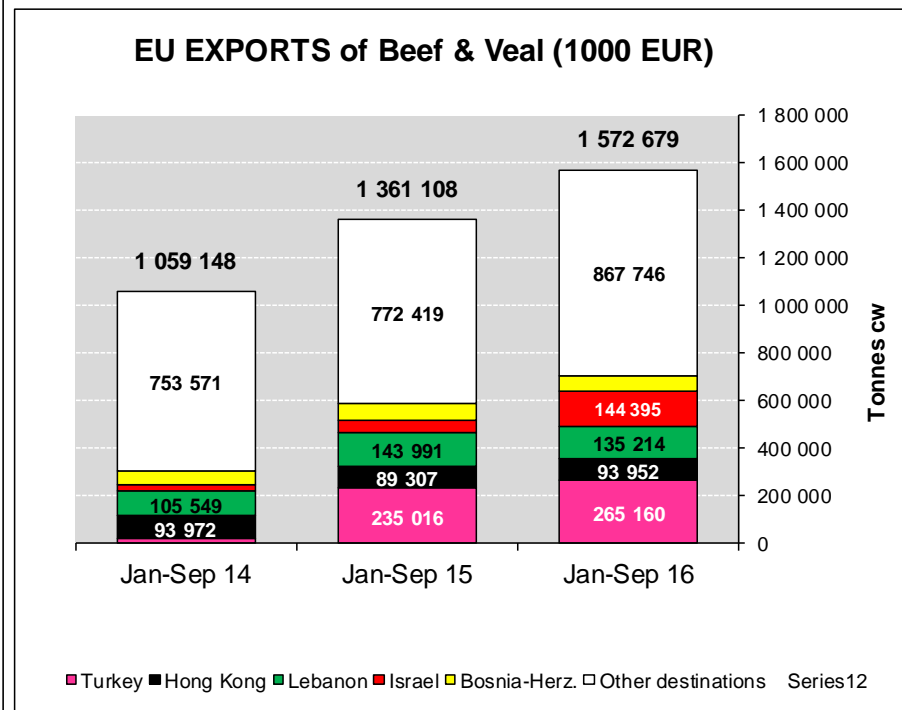
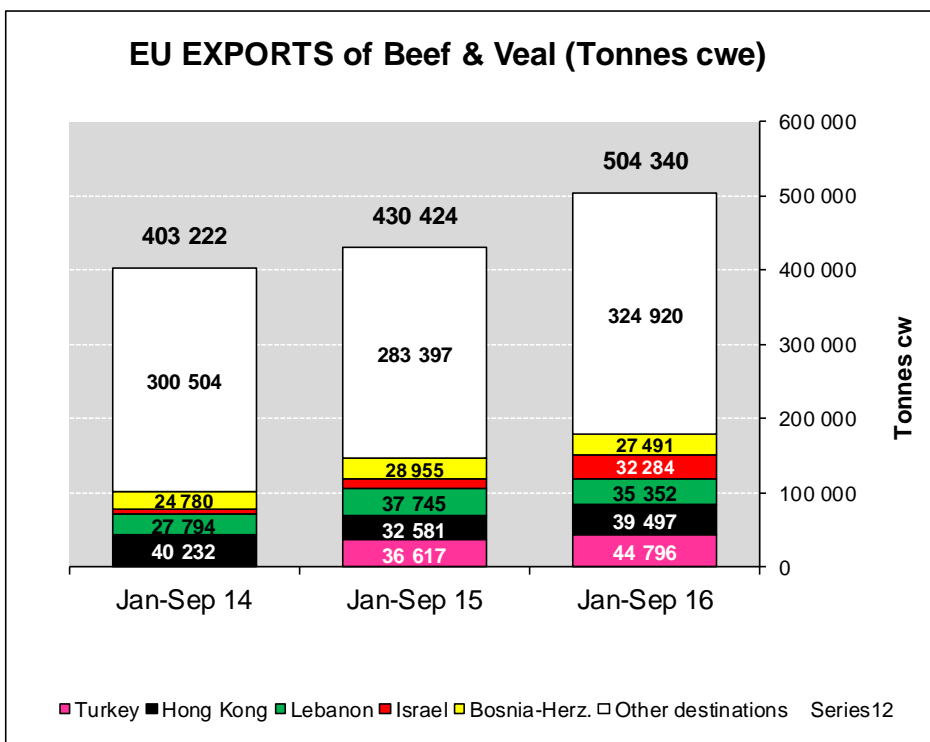


EU exports of beef and live animals (1): Trade figures (COMEXT – tonnes cwe)

Destinations	2012		2013		2014		2015		Jan-Sep 16		Compared to Jan-Sep 15
	tonnes	%	tonnes	%	tonnes	%	tonnes	%	tonnes	%	
Turkey	101 475	19.6%	5 086	1.1%	8 098	1.4%	57 584	9.6%	44 796	8.9%	+ 22.3%
Hong Kong	17 862	3.4%	28 573	6.3%	65 112	11.6%	45 267	7.6%	39 497	7.8%	+ 21.2%
Lebanon	24 099	4.6%	24 007	5.3%	37 984	6.8%	50 287	8.4%	35 352	7.0%	- 6.3%
Israel	8 435	1.6%	9 378	2.1%	8 353	1.5%	18 862	3.1%	32 284	6.4%	+ 190.1%
Bosnia-Herz.	14 893	2.9%	24 068	5.3%	34 104	6.1%	40 031	6.7%	27 491	5.5%	- 5.1%
Ivory Coast	15 929	3.1%	21 619	4.8%	28 839	5.2%	35 767	6.0%	26 374	5.2%	+ 1.3%
Ghana	28 693	5.5%	40 878	9.0%	33 255	5.9%	37 389	6.2%	26 093	5.2%	- 8.8%
Libya	10 665	2.1%	17 778	3.9%	14 280	2.6%	19 691	3.3%	22 023	4.4%	+ 67.5%
Switzerland	19 573	3.8%	26 347	5.8%	26 634	4.8%	26 038	4.3%	19 415	3.8%	- 4.7%
Algeria	17 323	3.3%	25 911	5.7%	18 499	3.3%	16 085	2.7%	17 386	3.4%	+ 35.1%
Vietnam	3 042	0.6%	3 175	0.7%	6 410	1.1%	11 627	1.9%	15 760	3.1%	+++
Norway	14 620	2.8%	10 222	2.3%	7 879	1.4%	19 129	3.2%	15 591	3.1%	- 8.2%
Philippines	2 028	0.4%	2 730	0.6%	11 839	2.1%	13 116	2.2%	15 201	3.0%	+ 65.8%
Egypt	1 305	0.3%	2 592	0.6%	2 763	0.5%	9 835	1.6%	12 905	2.6%	+ 75.5%
Russia	97 828	18.9%	72 281	16.0%	96 928	17.3%	13 643	2.3%	9 591	1.9%	+ 10.9%
China	5 119	1.0%	7 228	1.6%	8 244	1.5%	8 576	1.4%	9 517	1.9%	+ 87.3%
For.JRep.Mac	11 321	2.2%	10 577	2.3%	11 370	2.0%	12 562	2.1%	9 010	1.8%	- 3.6%
Other Destinations	135 806	26.2%	130 664	28.9%	150 019	26.8%	176 524	29.4%	135 063	26.8%	
Extra-EU	518 694		452 537		559 238		599 454		504 340		
% change			- 13%		+ 24%		+ 7%		+ 17.2%		

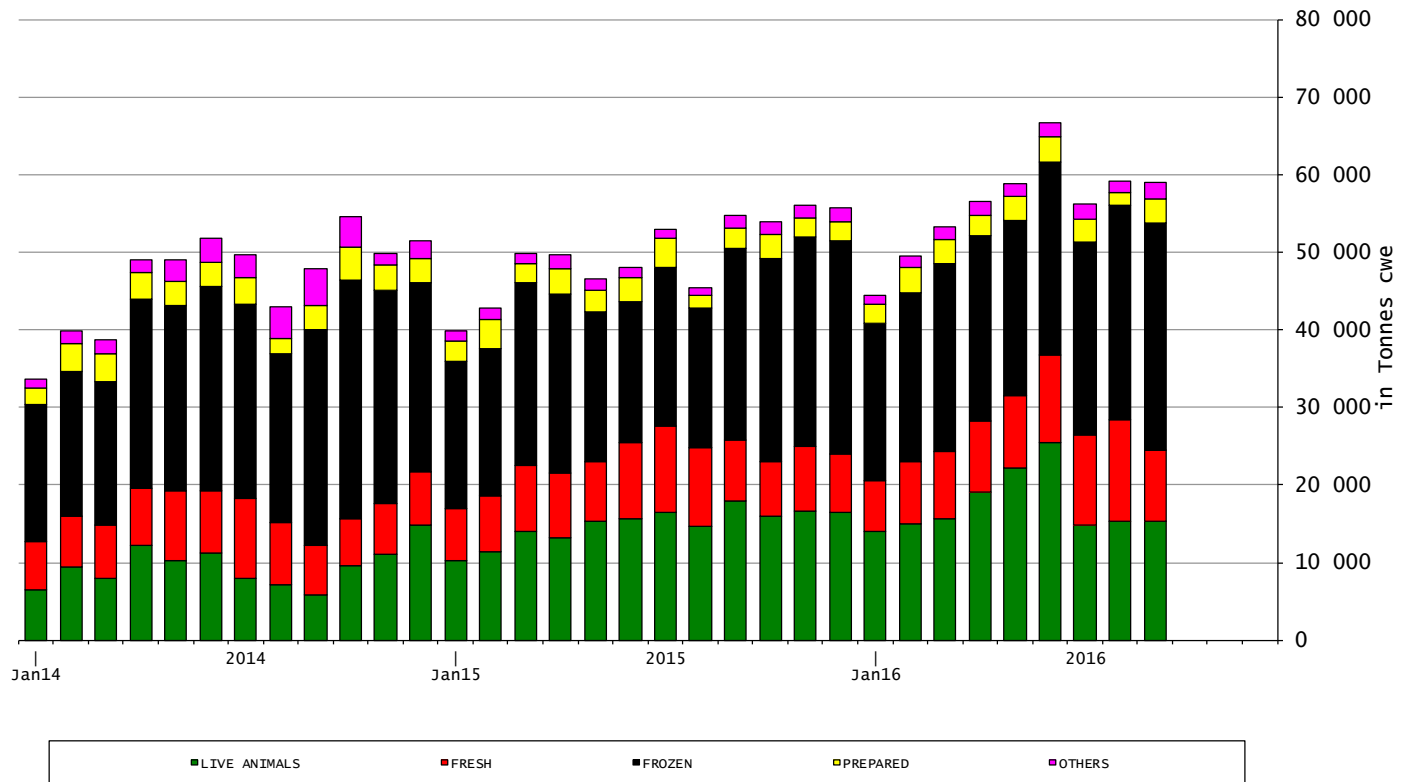


EU exports of beef and live animals: Trade figures (COMEXT)



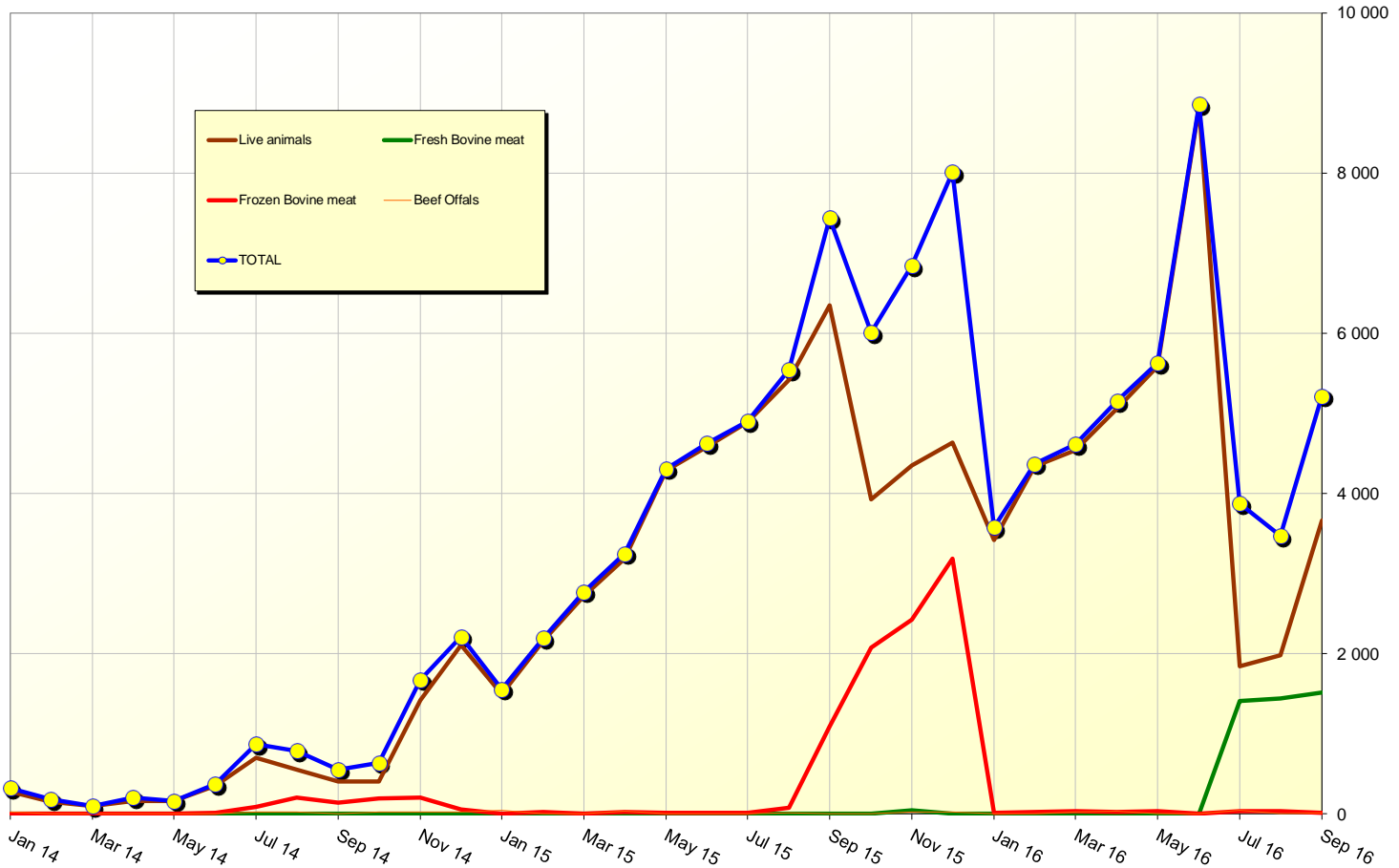


EU-28 Exports of BEEF products





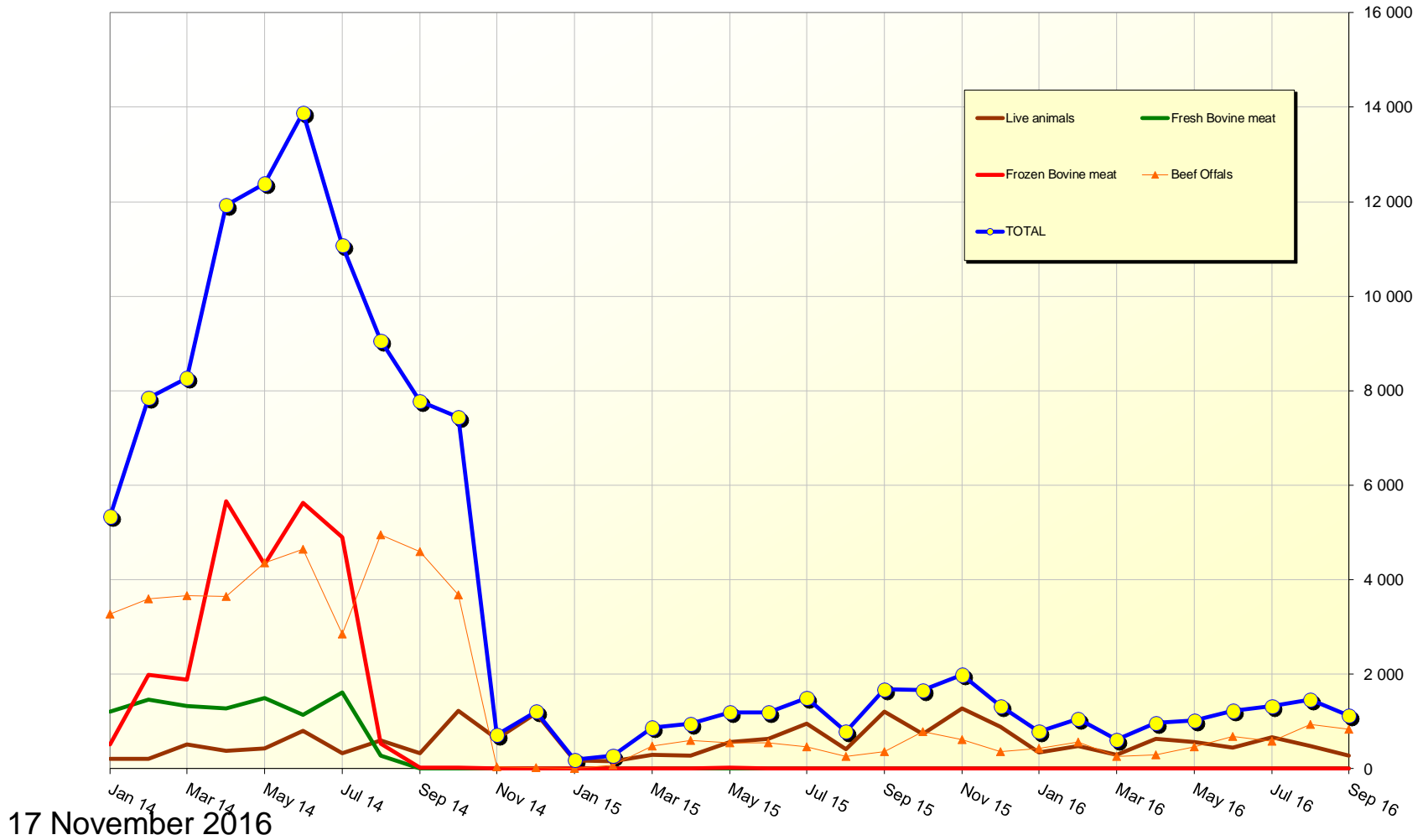
EU beef Exports to TURKEY Trade figures (COMEXT data) tonnes cwe



17 November 2016



EU beef Exports to RUSSIA Trade figures (COMEXT data) tonnes cwe



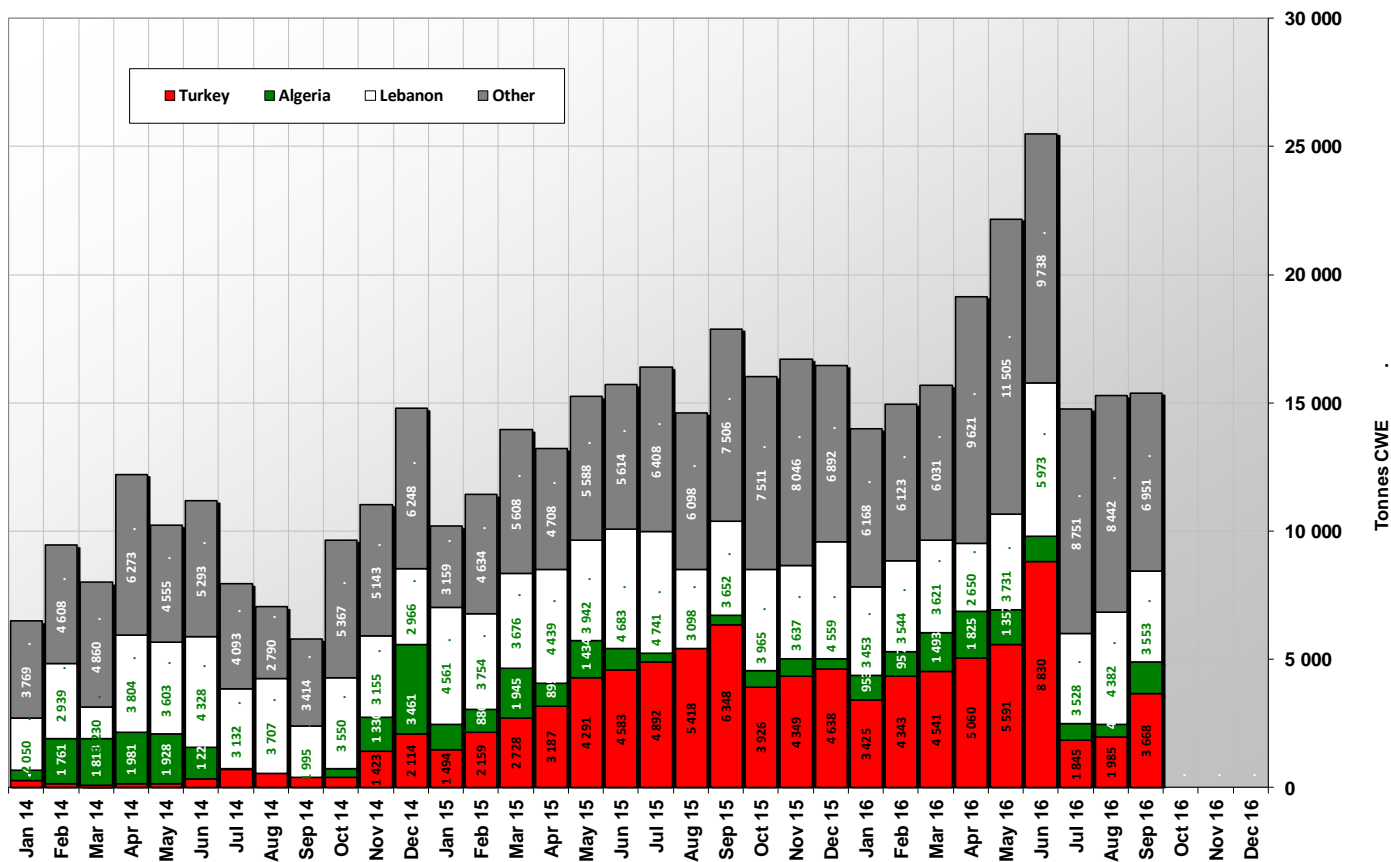
17 November 2016



European
Commission

EU-28 Exports of LIVE Bovine Animals

(Source COMEXT - Tonnes cwe)

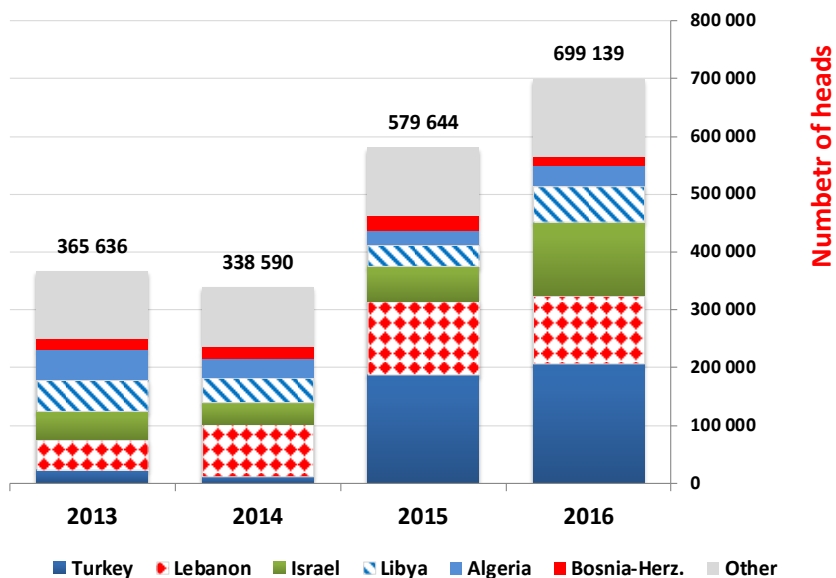


17 November 2016

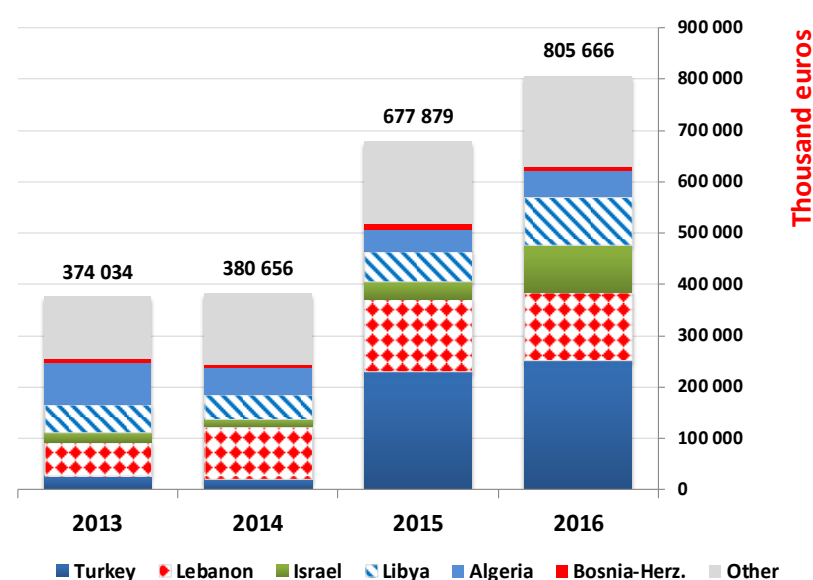


European
Commission

EU Exports of BEEF live animals by partner for the period Jan-Sep 2016



EU Exports of BEEF live animals by partner for the period Jan-Sep 2016





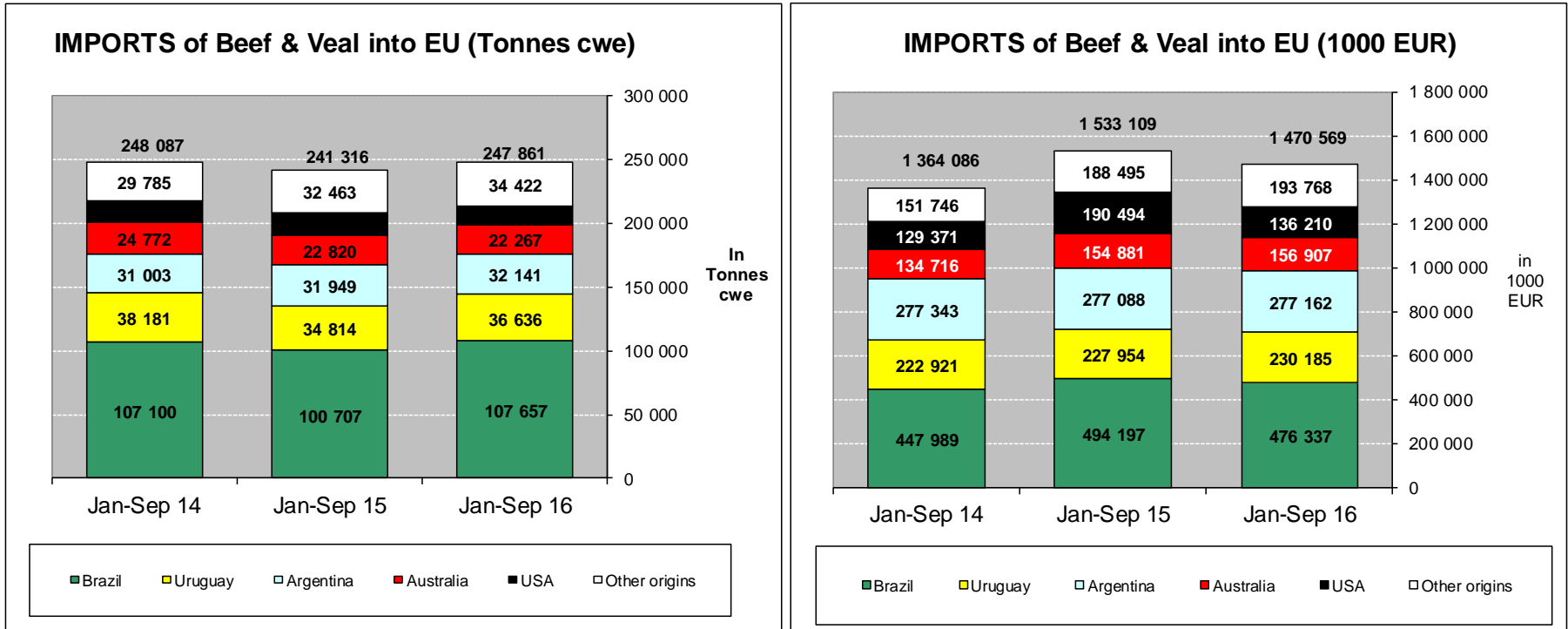
EU imports of beef and live animals (1): Trade figures (COMEXT – tonnes cwe)

Origins	2012		2013		2014		2015		Jan-Sep 16		Compared to Jan-Sep 15
	tonnes	%	tonnes	%	tonnes	%	tonnes	%	tonnes	%	
Brazil	126 344	41.1%	145 435	43.5%	144 259	43.4%	136 705	42.4%	107 657	43.4%	+ 6.9%
Uruguay	51 996	16.9%	51 377	15.4%	49 043	14.8%	46 301	14.3%	36 636	14.8%	+ 5.2%
Argentina	51 693	16.8%	47 976	14.3%	42 074	12.7%	42 135	13.1%	32 141	13.0%	+ 0.6%
Australia	21 290	6.9%	28 074	8.4%	32 653	9.8%	30 879	9.6%	22 267	9.0%	- 2.4%
USA	21 095	6.9%	22 297	6.7%	23 234	7.0%	24 075	7.5%	14 738	5.9%	- 20.6%
Namibia	8 848	2.9%	11 113	3.3%	9 994	3.0%	12 140	3.8%	8 848	3.6%	- 6.3%
New Zealand	15 181	4.9%	13 827	4.1%	14 432	4.3%	11 369	3.5%	7 831	3.2%	- 14.0%
Botswana	474	0.2%	6 280	1.9%	6 424	1.9%	9 258	2.9%	7 027	2.8%	- 3.5%
Paraguay	101	0.0%	0	0.0%	0	0.0%	1 915	0.6%	4 498	1.8%	+++
Switzerland	4 946	1.6%	4 284	1.3%	5 456	1.6%	5 089	1.6%	3 823	1.5%	+ 6.9%
Chile	1 711	0.6%	537	0.2%	875	0.3%	710	0.2%	473	0.2%	- 15.9%
Serbia	641	0.2%	619	0.2%	425	0.1%	439	0.1%	381	0.2%	+ 14.7%
Canada	825	0.3%	965	0.3%	780	0.2%	428	0.1%	284	0.1%	- 14.3%
Japan	0	0.0%	3	0.0%	100	0.0%	216	0.1%	270	0.1%	+ 13.9%
Norway	159	0.1%	201	0.1%	347	0.1%	480	0.1%	193	0.1%	- 56.6%
Hong Kong	10	0.0%	0	0.0%	0	0.0%	0	0.0%	175	0.1%	+++
Ukraine	0	0.0%	0	0.0%	570	0.2%	20	0.0%	173	0.1%	+++
Other Origins	2 392	0.8%	1 640	0.5%	1 695	0.5%	596	0.2%	447	0.2%	
Extra-EU	307 707		334 630		332 361		322 753		247 861		
% change			+ 9%		- 1%		- 3%		+ 2.7%		

17 November 2016

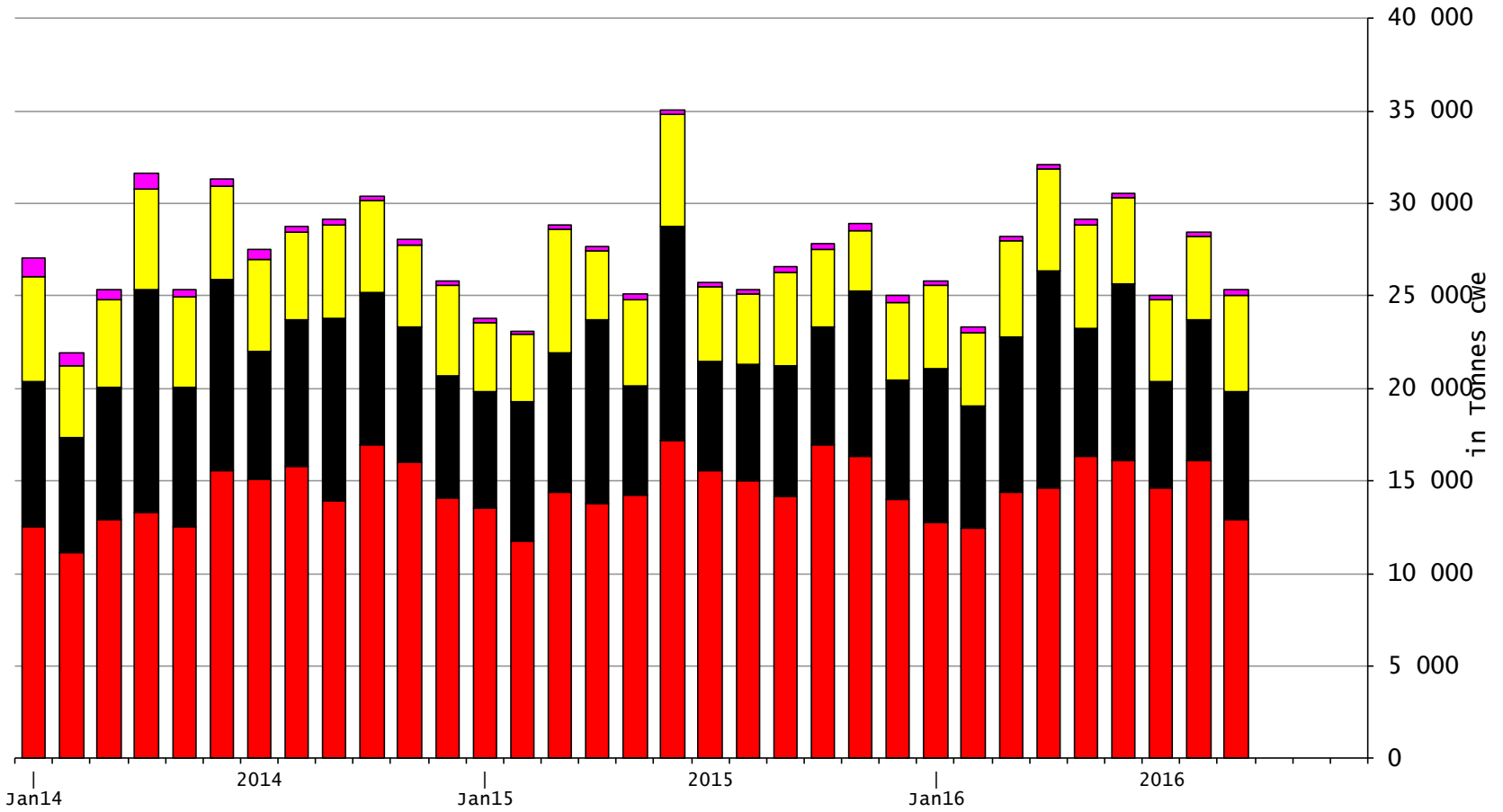


EU imports of beef and live animals (2): Trade figures (COMEXT)





EU-28 Imports of BEEF products



17 November 2016

FRESH

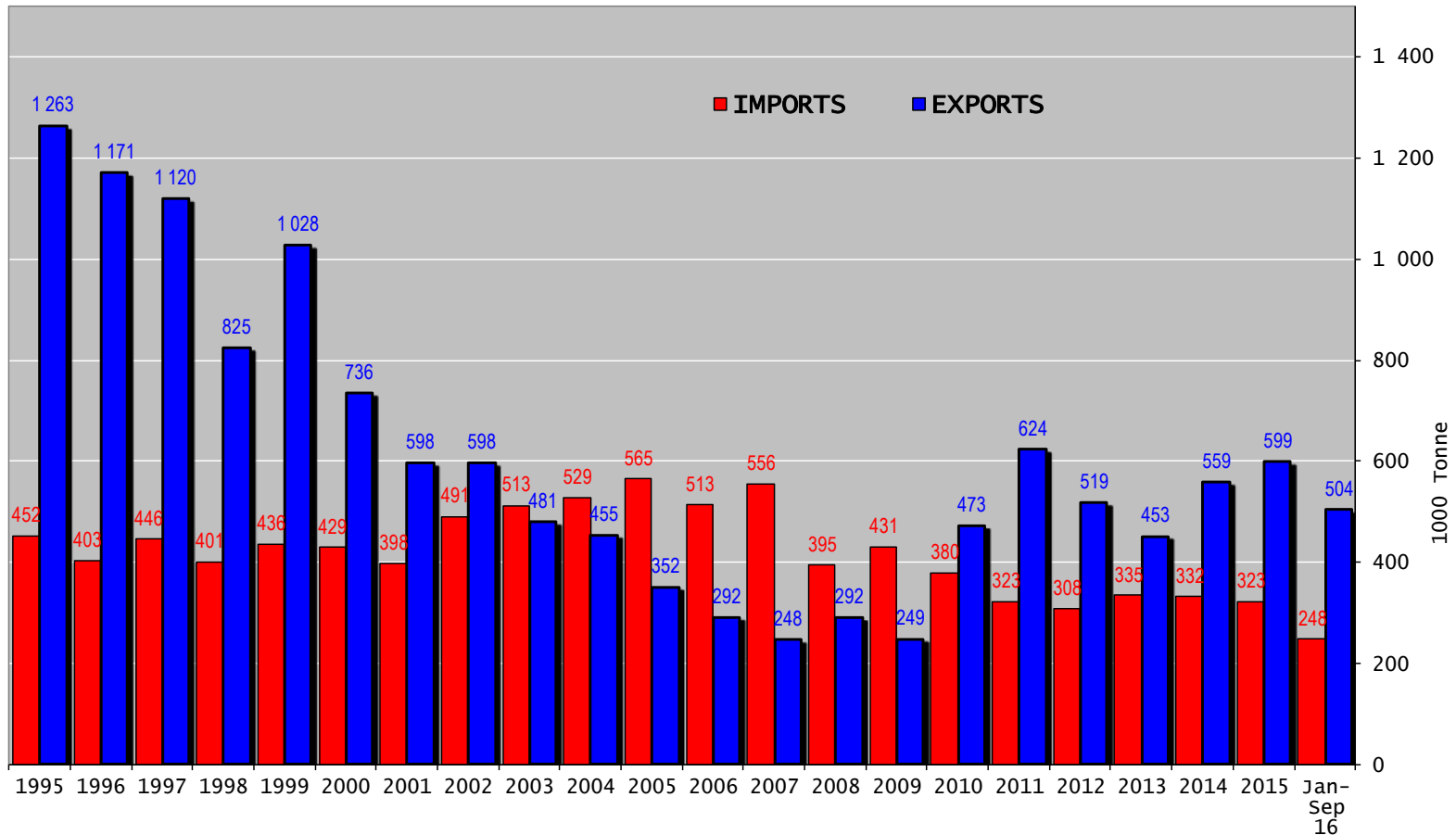
FROZEN

PREPARED

OTHERS



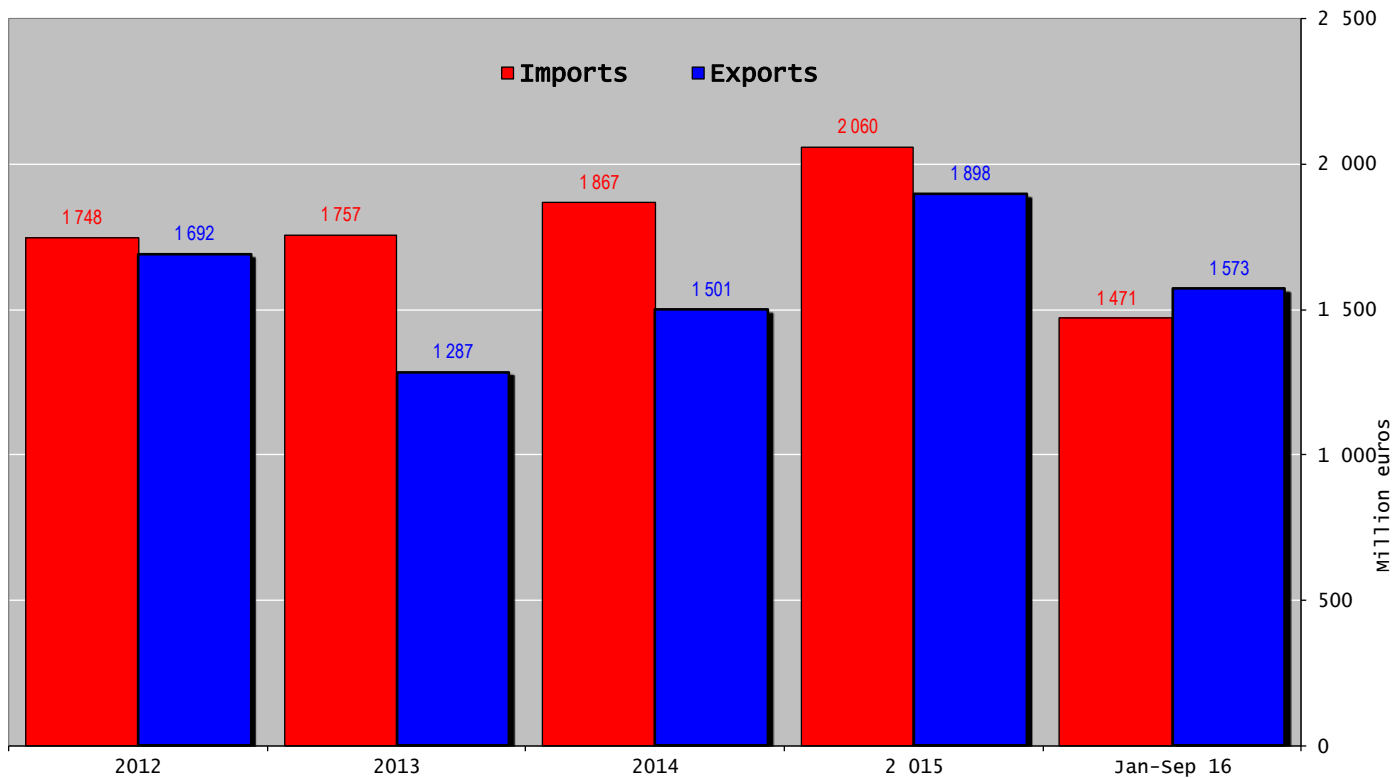
Trade balance of beef and live animals



17 November 2016



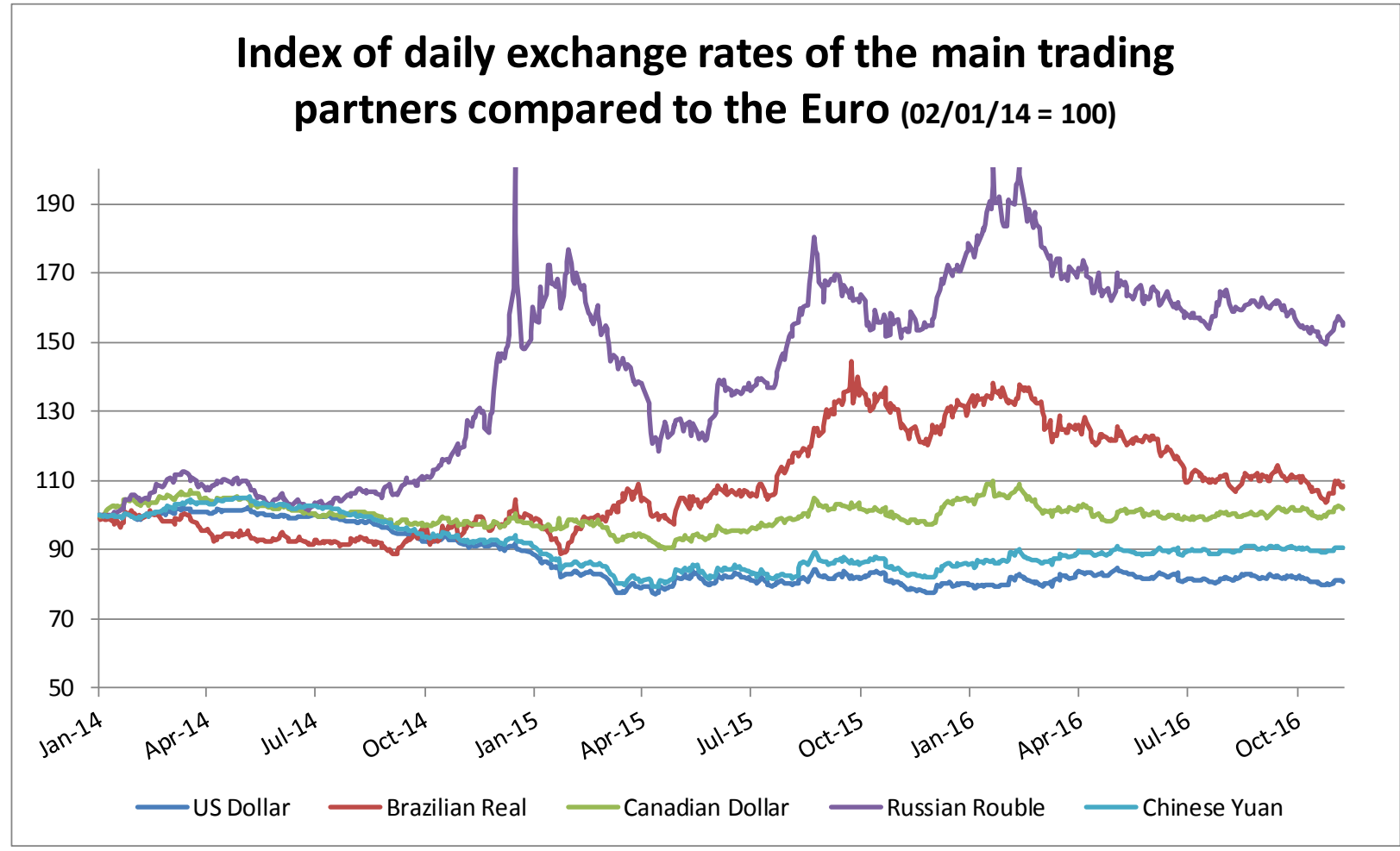
Trade balance of beef and live animals



17 November 2016



Index of daily exchange rates of the main trading partners compared to the Euro (02/01/14 = 100)



17 November 2016

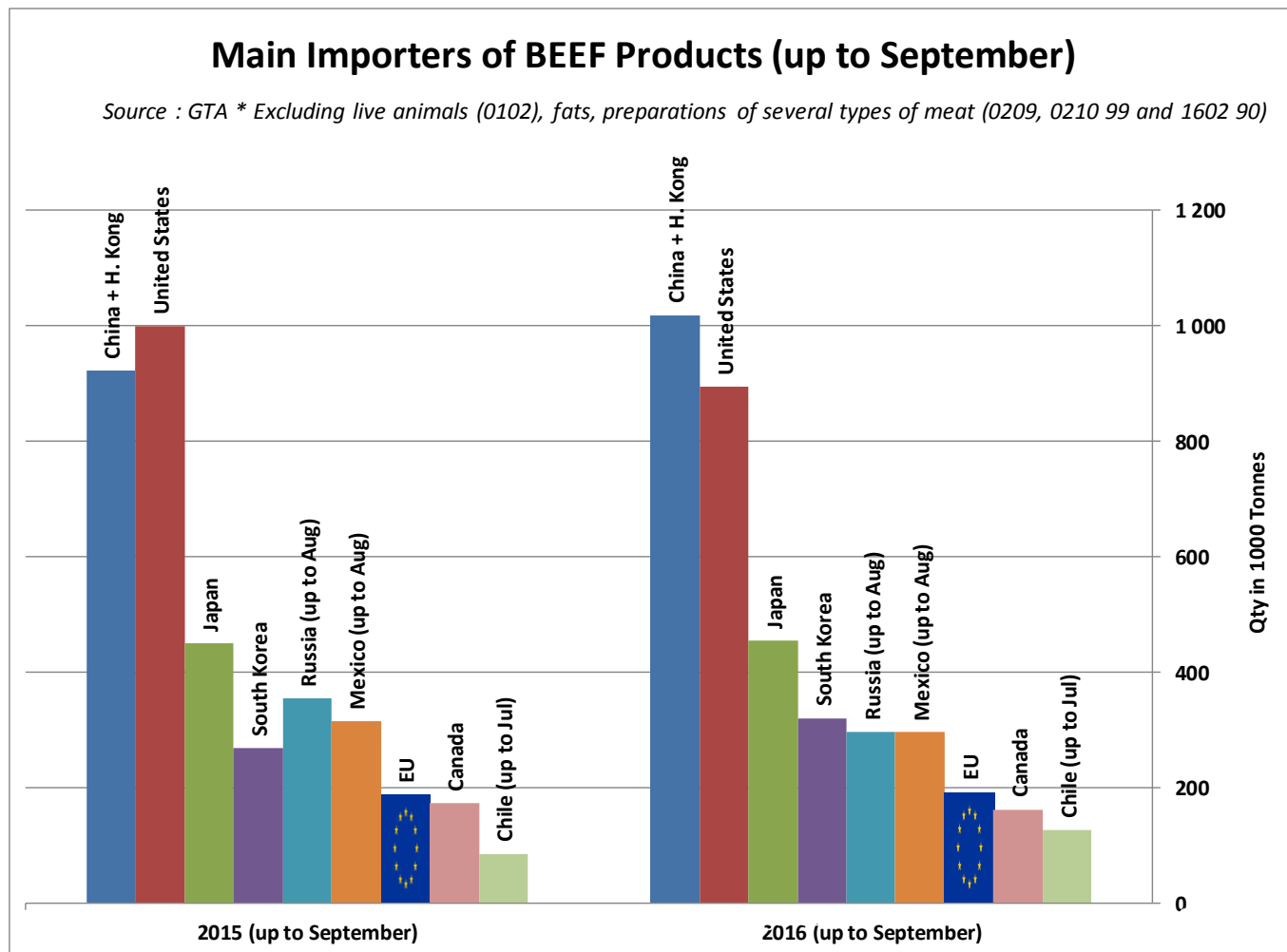


Source : GTA

* Excluding live animals (0102), fats, preparations of several types of meat (0209, 0210 99 and 1602 90)

Main Importers of BEEF Products (up to September)

Source : GTA * Excluding live animals (0102), fats, preparations of several types of meat (0209, 0210 99 and 1602 90)



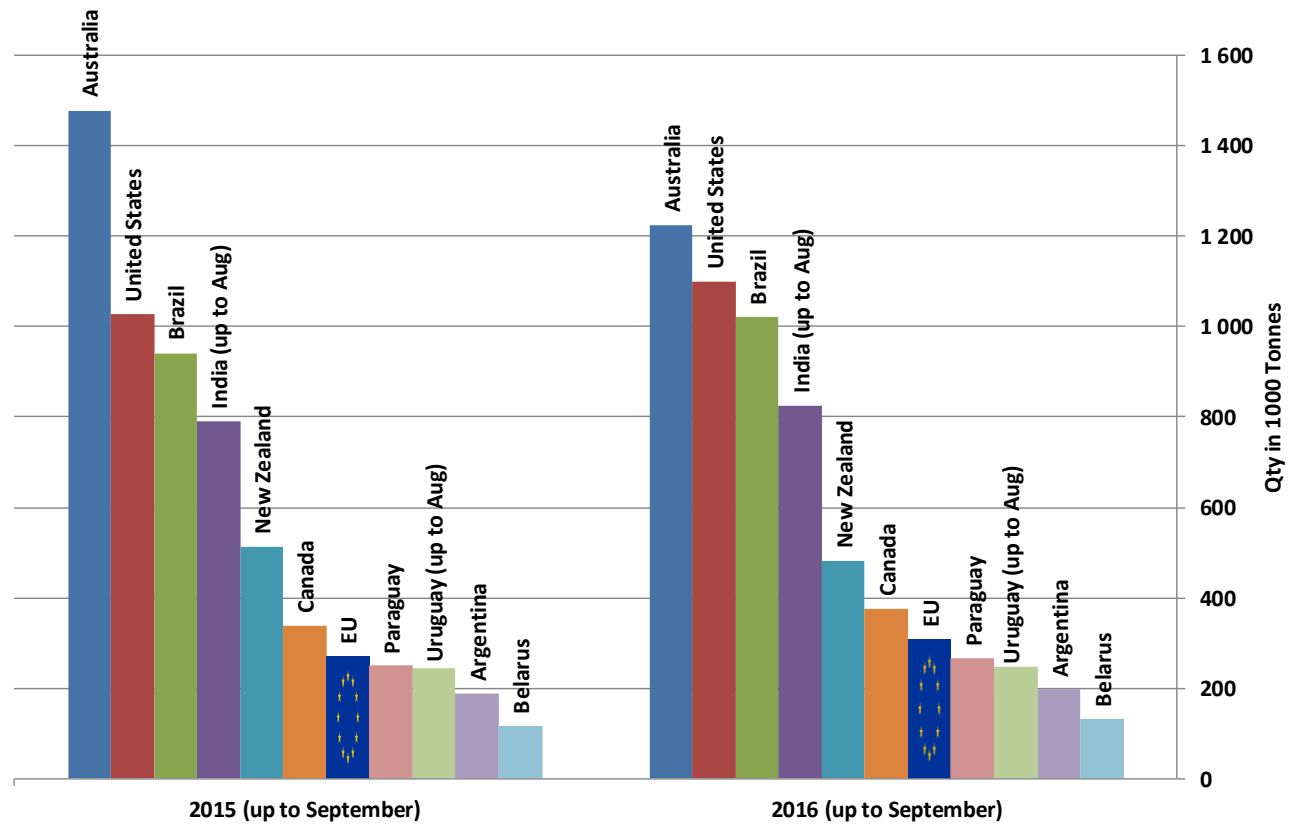
17 November 2016



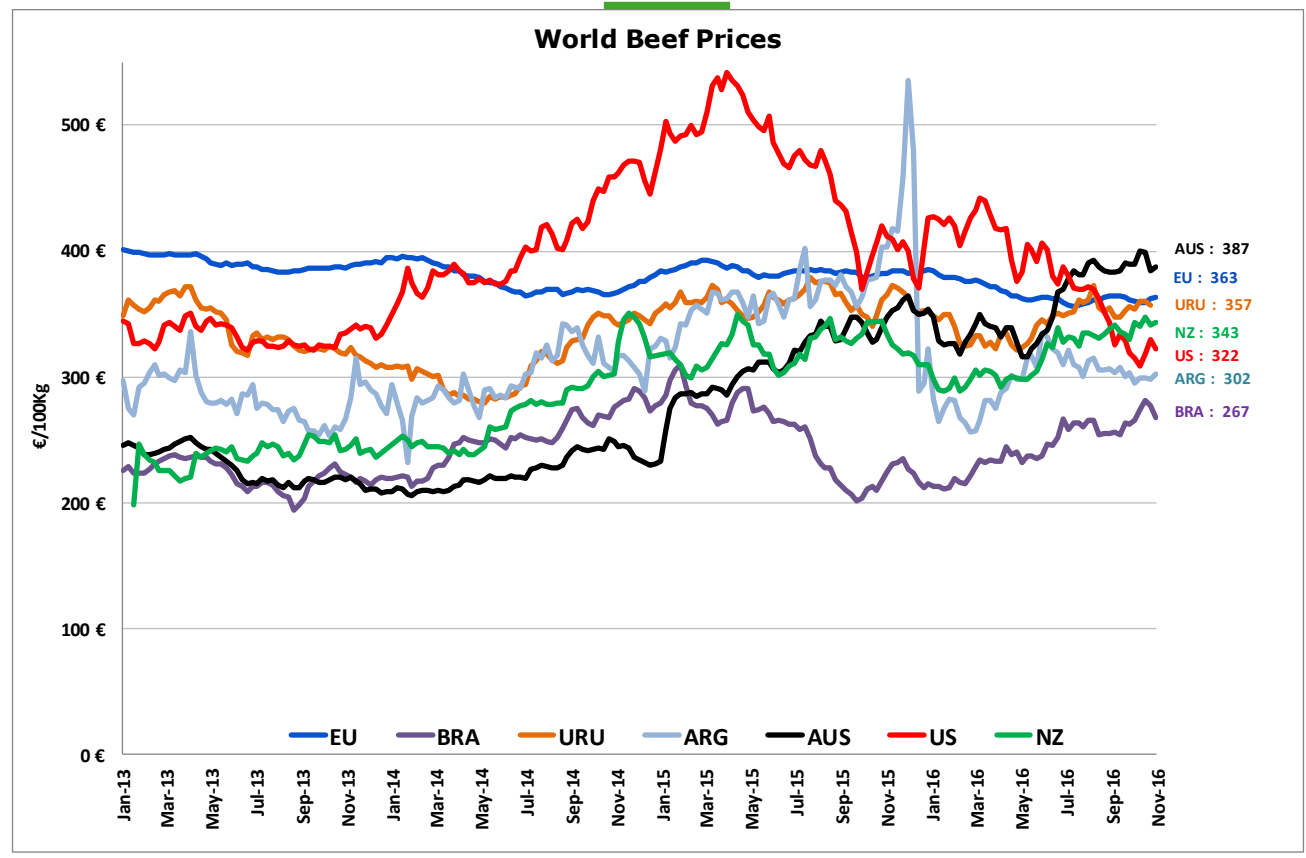
Source : GTA * Excluding live animals (0102), fats, preparations of several types of meat (0209, 0210 99 and 1602 90)

Main Exporters of BEEF Products (up to September)

Source : GTA * Excluding live animals (0102), fats, preparations of several types of meat (0209, 0210 99 and 1602 90)



17 November 2016



- ECB <http://sdw.ecb.europa.eu/browse.do?node=2018794>
- US <https://www.marketnews.usda.gov/mnp/ls-home>
- AUS <http://statistics.mla.com.au/Report/RunReport/ae59d4ac-74e4-4c56-93bd-982a044d9760>
- UY <http://www.inac.gub.uy/innovaportal/v/11034/10/innova.front/indicadores-y-precios>
- ARG http://www.abc-consorcio.com.ar/Estadisticas/detalle/117/precios_comparativos_del_novillo.html
- BR <http://www.pecuaria.com.br/cotacoes.php>
- NZ http://www.abc-consorcio.com.ar/Estadisticas/detalle/117/precios_comparativos_del_novillo.html

17 November 2016

High Quality Beef Import Quotas



Hilton Quota

Regulation (EU) N° 593/2013

	Quantity allocated (Tons)	2013/2014		2014/2015		2015/2016		2016/2017*		
		Use		Use		Use		Use		
09.4001 Australia	2 250									
09.4004 Argentina	200	15.71	7.86%	9.46	4.73%	12.21	6.11%	1.77	0.89%	
09.4450 Argentina	29 500	23 663.86	80.22%	22 867.03	77.52%	22 350.61	75.76%	6 196.19	21.00%	
09.4451 Australia	7 150	7 138.89	99.84%	6 815.93	95.33%	6 749.85	94.40%	5 741.15	80.30%	
09.4452 Uruguay	6 300	6 278.75	99.66%	6 280.98	99.70%	6 249.09	99.19%	2 331.16	37.00%	
09.4453 Brazil	10 000	4 078.92	40.79%	7 989.89	79.90%	9 289.17	92.89%	2 417.76	24.18%	
09.4454 New Zealand	1 300	1 299.61	99.97%	1 299.45	99.96%	1 299.95	100.00%	329.61	25.35%	
09.4002 Canada/US	11 500	431.80	3.75%	353.46	3.07%	292.16	2.54%	138.30	1.20%	
09.4455 Paraguay	1 000		0.00%	12.13	1.21%	915.63	91.56%	360.57	36.06%	
Total Beef	66 750	42 891.83	64.26%	45 618.87	68.34%	47 146.46	70.63%	17 514.74	26.24%	
Total Buffalo	2 450	15.71	0.64%	9.46	0.39%	12.21	0.50%	1.77	0.07%	
Total	69 200	42 907.54	62.01%	45 628.33	65.94%	47 158.67	68.15%	17 516.51	25.31%	

* up to 30/09/2016

17 November 2016

High Quality Beef Import Quotas



European
Commission

Quota erga omnes

Regulation (EU) No 481/2012

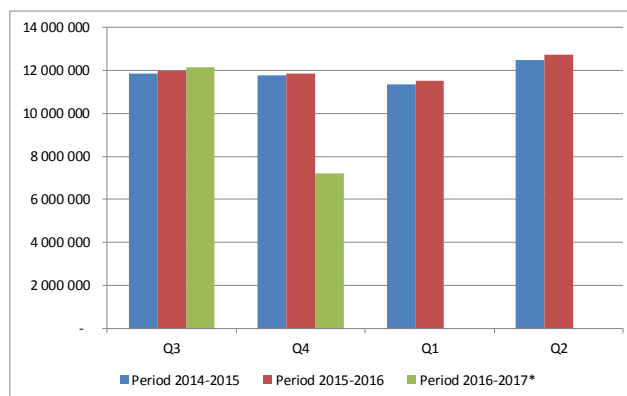
	2013-Q3	2013-Q4	2014-Q1	2014-Q2	TOTAL
Period 2013-2014	10 198 942	10 493 437	10 191 527	10 282 860	41 166 765
Available	12 050 000	12 050 000	12 050 000	12 050 000	48 200 000
Use	84.64%	87.08%	84.58%	85.33%	85.41%

	2014-Q3	2014-Q4	2015-Q1	2015-Q2	TOTAL
Period 2014-2015	11 842 700	11 745 231	11 352 426	12 457 389	47 397 746
Available	12 050 000	12 050 000	12 050 000	12 050 000	48 200 000
Use	98.28%	97.47%	94.21%	103.38%	98.34%
Available after transfer	12 050 000	12 257 300	12 562 069	13 259 644	
	98.28%	95.82%	90.37%	93.95%	

	2015-Q3	2015-Q4	2016-Q1	2016-Q2	TOTAL
Period 2015-2016	11 965 843	11 851 187	11 528 823	12 736 406	48 082 260
Available	12 050 000	12 050 000	12 050 000	12 050 000	48 200 000
Use	99.30%	98.35%	95.67%	105.70%	99.76%
Available after transfer	12 050 000	12 134 157	12 332 969	12 854 146	
	99.30%	97.67%	93.48%	99.08%	

	2016-Q3	2016-Q4	2017-Q1	2017-Q2	TOTAL
Period 2016-2017*	12 139 415	7 222 248	-	-	19 361 663
Available	12 050 000	12 050 000	12 050 000	12 050 000	48 200 000
Use	100.74%	59.94%	0.00%	0.00%	40.17%
Available after transfer	12 050 000	11 960 585	16 788 337	28 838 337	
	100.74%	60.38%	0.00%	0.00%	

* Until 10.11.2016



17 November 2016

Forecast Summary



European
Commission

	2014	2015	2016	2017				
EU.15 PRODUCTION (1000T)	- 0.19%	6 636	+ 2.68%	6 814	+ 3.52%	7 053	+ 0.46%	7 086
EU.15 CONSUMPTION (1000T)	- 3.47%	6 624	+ 1.78%	6 742	+ 0.30%	6 762	- 0.49%	6 729
BALANCE		12		72		291		357
EU.13 PRODUCTION (1000T)	+ 12.11%	691	+ 12.43%	777	+ 11.42%	866	+ 3.95%	900
EU.13 CONSUMPTION (1000T)	+ 10.12%	431	+ 2.06%	439	- 7.58%	406	- 0.97%	402
BALANCE		260		337		459		497
EU.28 PRODUCTION (1000T)	+ 0.86%	7 327	+ 3.60%	7 590	+ 4.33%	7 919	+ 0.84%	7 986
EU.28 CONSUMPTION (1000T)	- 2.74%	7 055	+ 1.80%	7 181	- 0.18%	7 168	- 0.51%	7 131
BALANCE		272		409		751		854
EU - CARCASS PRICES		2014		2015		2016		2017
ADULT MALE BOVINES (€/100 kg)	- 5.8%	373.5	+ 3.47%	386.5	- 3.00%	374.9	+ 0.93%	378.4
COWS (€/100 kg)	- 8.4%	286.8	- 0.66%	285.0	- 5.66%	268.8	+ 1.20%	272.0

Sources : EStat New Cronos, Member States

17 November 2016