



# **Market situation Cereals & Oilseeds**

**AGRI C 5**

**Advisory Group Pig meat**

**12 April 2012**



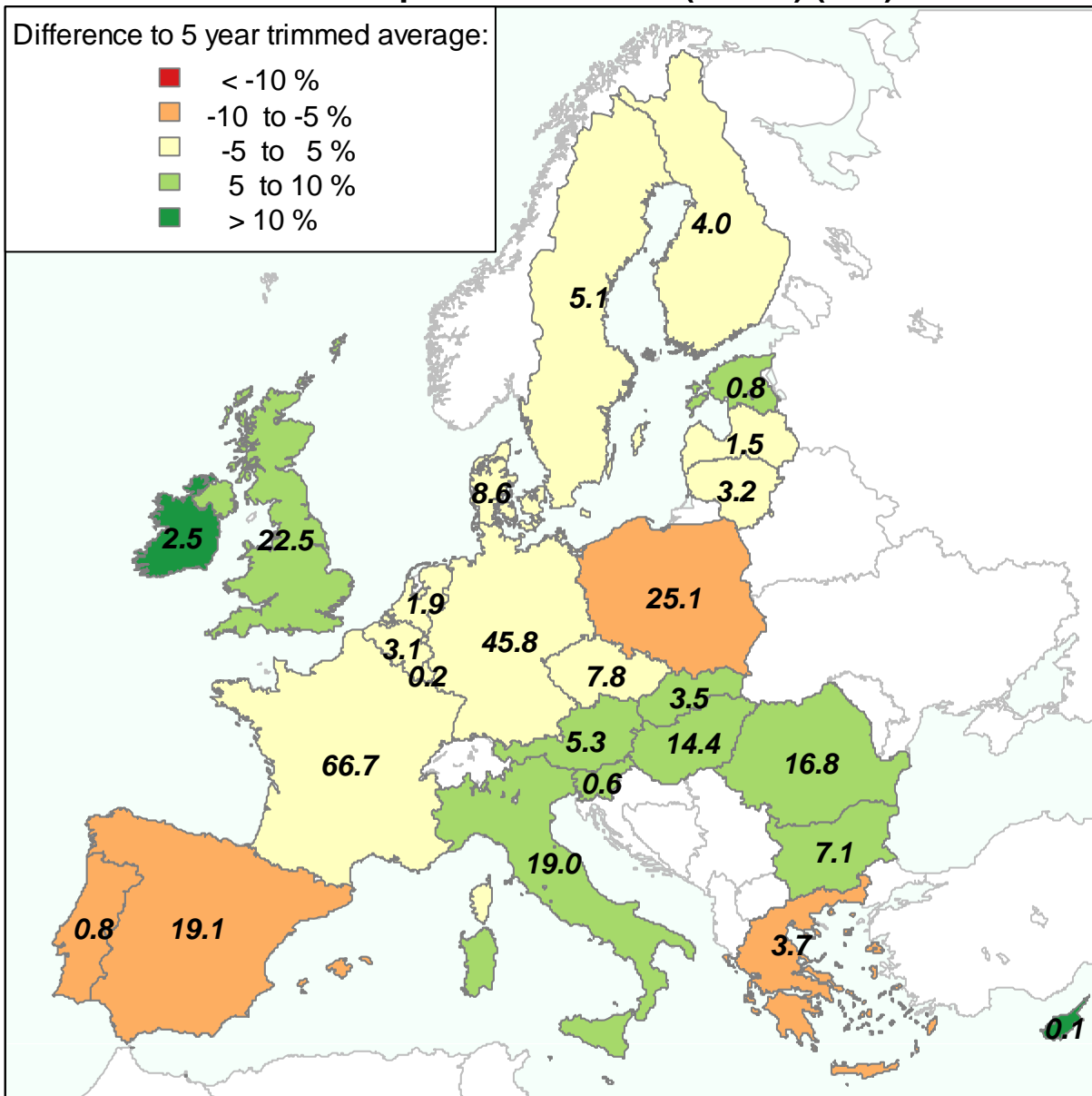
# **EU Cereals and Oilseeds production 2011/2012 & 2012/13**

## EU 27- 2012 Production Forecasts

### EU 27 CEREALS USABLE PRODUCTIONS

Mio t	2010/11	2011/12	2012/2013 March fcst	%change 2011/2012
TOTAL	274,9	284,3	286,6	0,8
Soft wheat	126,6	128,8	131,4	2,0
Durum wheat	8,9	8,1	8,4	3,7
Barley	52,7	51,3	54,7	6,6
Maize	56,7	66,8	62,2	-6,9
Rye	7,6	6,6	7,5	13,6
Oats	7,2	7,8	7,9	1,3

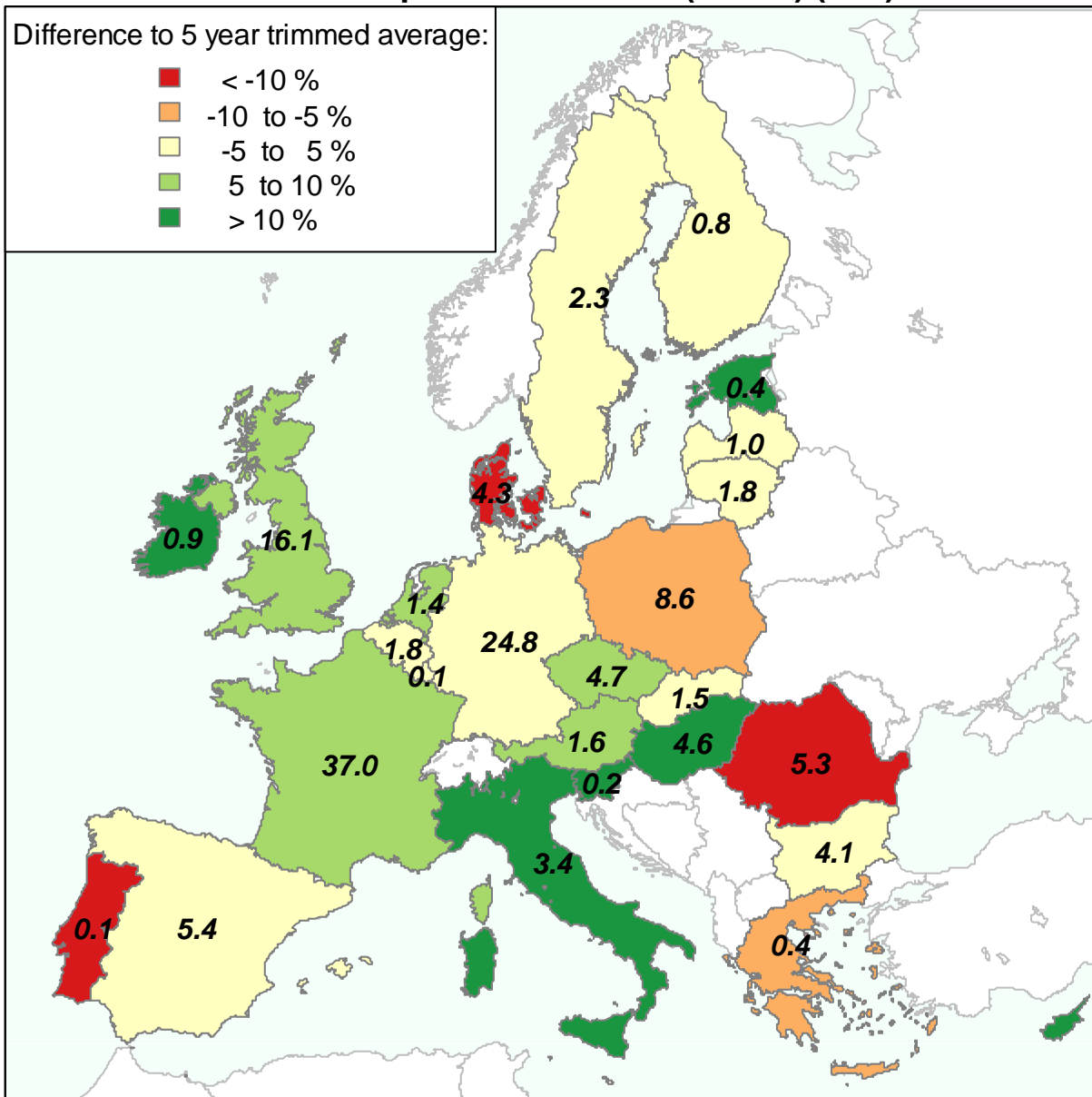
### All cereals production 2012 ( mio t ) (est.)



Calculations and cartography: European Commission DG-AGRI C5 2012-03-27 © EuroGeographics for the administrative boundaries

EU27 production : 286.6 ( mio t ) Difference to 5 year trimmed average: 1 %

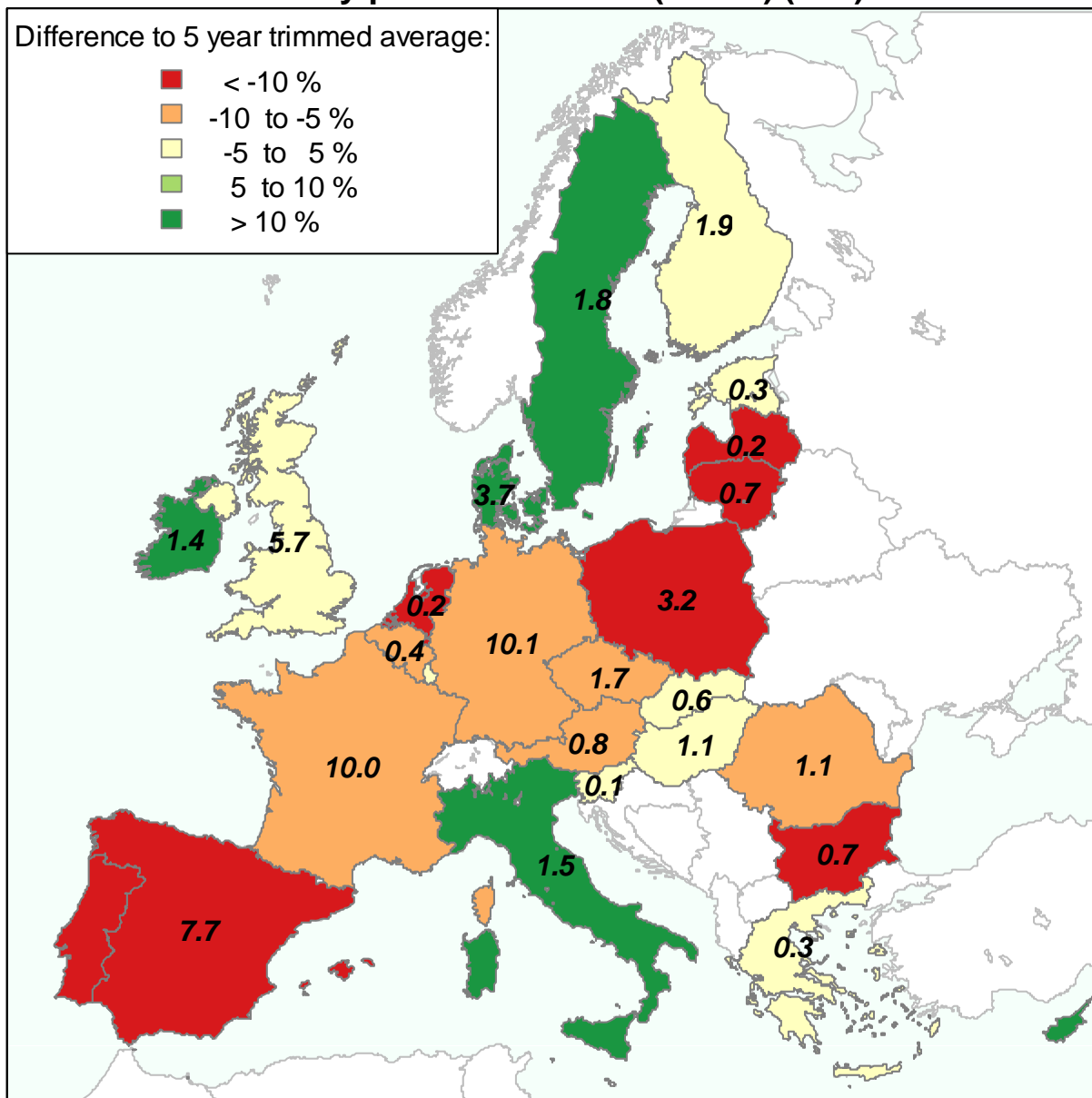
### Soft wheat production 2012 ( mio t ) (est.)



Calculations and cartography: European Commission DG-AGRI C5 2012-03-27 © EuroGeographics for the administrative boundaries

EU27 production : 131.4 ( mio t ) Difference to 5 year trimmed average: 3 %

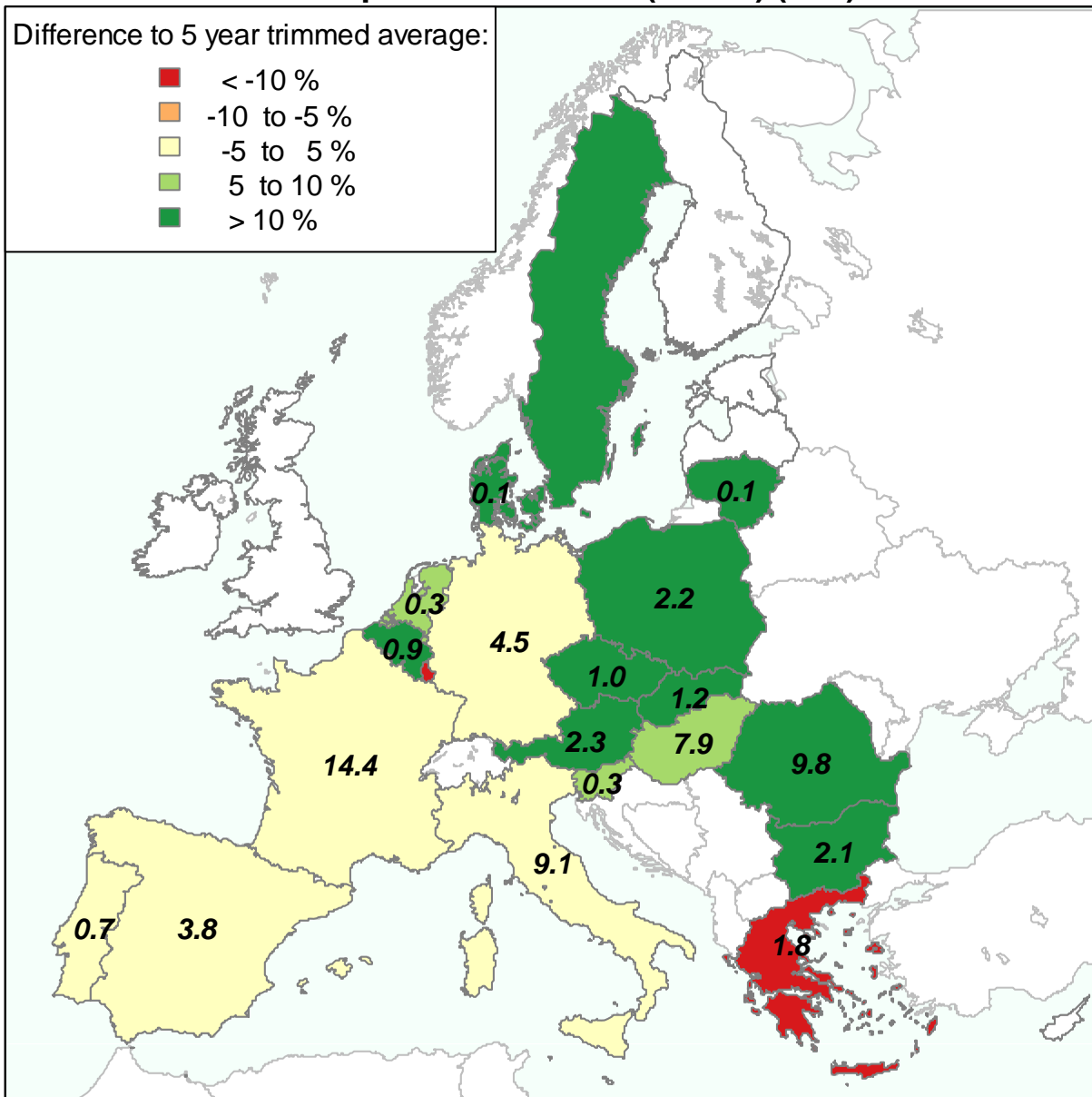
## Barley production 2012 ( mio t ) (est.)



Calculations and cartography: European Commission DG-AGRI C5 2012-03-27 © EuroGeographics for the administrative boundaries

EU27 production : 54.7 ( mio t ) Difference to 5 year trimmed average: -4 %

### Maize production 2012 ( mio t ) (est.)



Calculations and cartography: European Commission DG-AGRI C5 2012-03-27 © EuroGeographics for the administrative boundaries

EU27 production : 62.2 ( mio t ) Difference to 5 year trimmed average: 5 %

EU-27	Cereals balance sheet:Marketing year:									2011/2012	(Mio t)
<i>mars-12</i>	Common	Barley	Durum	Maize	Rye	Sorghum	Oats	Triticale	Others	EUR 27	
	wheat										
<b>Beginning stocks (01.07.2010)</b>											
Market	10,1	10,9	0,6	11,3	0,6	0,2	1,1	1,0	0,2	36,1	
Intervention	0,0	0,5	0,0	0,0	0,0	0,0	0,0	0,0	0,0	0,6	
<b>Total</b>	<b>10,2</b>	<b>11,4</b>	<b>0,6</b>	<b>11,3</b>	<b>0,6</b>	<b>0,2</b>	<b>1,1</b>	<b>1,0</b>	<b>0,2</b>	<b>36,7</b>	
<b>Usable production</b>	<b>128,8</b>	<b>51,3</b>	<b>8,1</b>	<b>66,8</b>	<b>6,6</b>	<b>0,6</b>	<b>7,8</b>	<b>9,9</b>	<b>4,3</b>	<b>284,3</b>	
Import	5,2	0,4	1,8	5,0	0,0	0,1	0,0	0,0	0,2	12,7	
<b>TOTAL AVAILABILITIES</b>	<b>144,2</b>	<b>63,1</b>	<b>10,5</b>	<b>83,2</b>	<b>7,2</b>	<b>0,9</b>	<b>8,9</b>	<b>11,0</b>	<b>4,7</b>	<b>333,7</b>	
<b>USE</b>											
- Human	47,8	0,4	8,0	4,8	3,0	0,2	1,1	0,1	0,0	65,4	
- Seed	4,8	2,2	0,5	0,5	0,5	0,0	0,5	0,5	0,3	9,7	
- Industrial	10,6	9,2	0,1	7,6	1,3	0,0	0,1	0,6	0,1	29,6	
of which alcohol										10,7	
o.w. bioethanol/biofuel	4,6	0,7		2,7	0,6			0,5		9,1	
- Animal feed	55,0	36,6	0,4	53,5	2,0	0,7	6,0	9,0	4,0	167,2	
<b>TOTAL USE</b>	<b>118,2</b>	<b>48,3</b>	<b>9,0</b>	<b>66,4</b>	<b>6,8</b>	<b>0,9</b>	<b>7,7</b>	<b>10,2</b>	<b>4,4</b>	<b>271,9</b>	
Losses (excl on-farm)	0,9	0,4	0,1	0,6	0,1	0,0	0,1	0,1	0,0	2,2	
<b>Solde disponible</b>	<b>25,1</b>	<b>14,4</b>	<b>1,4</b>	<b>16,2</b>	<b>0,4</b>	<b>0,0</b>	<b>1,2</b>	<b>0,7</b>	<b>0,3</b>	<b>59,7</b>	
<b>Export</b>	<b>15,0</b>	<b>5,0</b>	<b>1,1</b>	<b>3,0</b>	<b>0,1</b>	<b>0,0</b>	<b>0,1</b>	<b>0,0</b>	<b>0,0</b>	<b>24,3</b>	
<b>Ending stocks (30.06.2011)</b>	<b>10,1</b>	<b>9,4</b>	<b>0,3</b>	<b>13,2</b>	<b>0,3</b>	<b>0,0</b>	<b>1,1</b>	<b>0,7</b>	<b>0,2</b>	<b>35,3</b>	
<b>Ending stocks (29.02.2012)</b>	<b>57,6</b>	<b>26,4</b>	<b>2,9</b>	<b>31,9</b>	<b>2,8</b>	<b>0,0</b>	<b>3,3</b>	<b>3,7</b>	<b>1,5</b>	<b>130,2</b>	

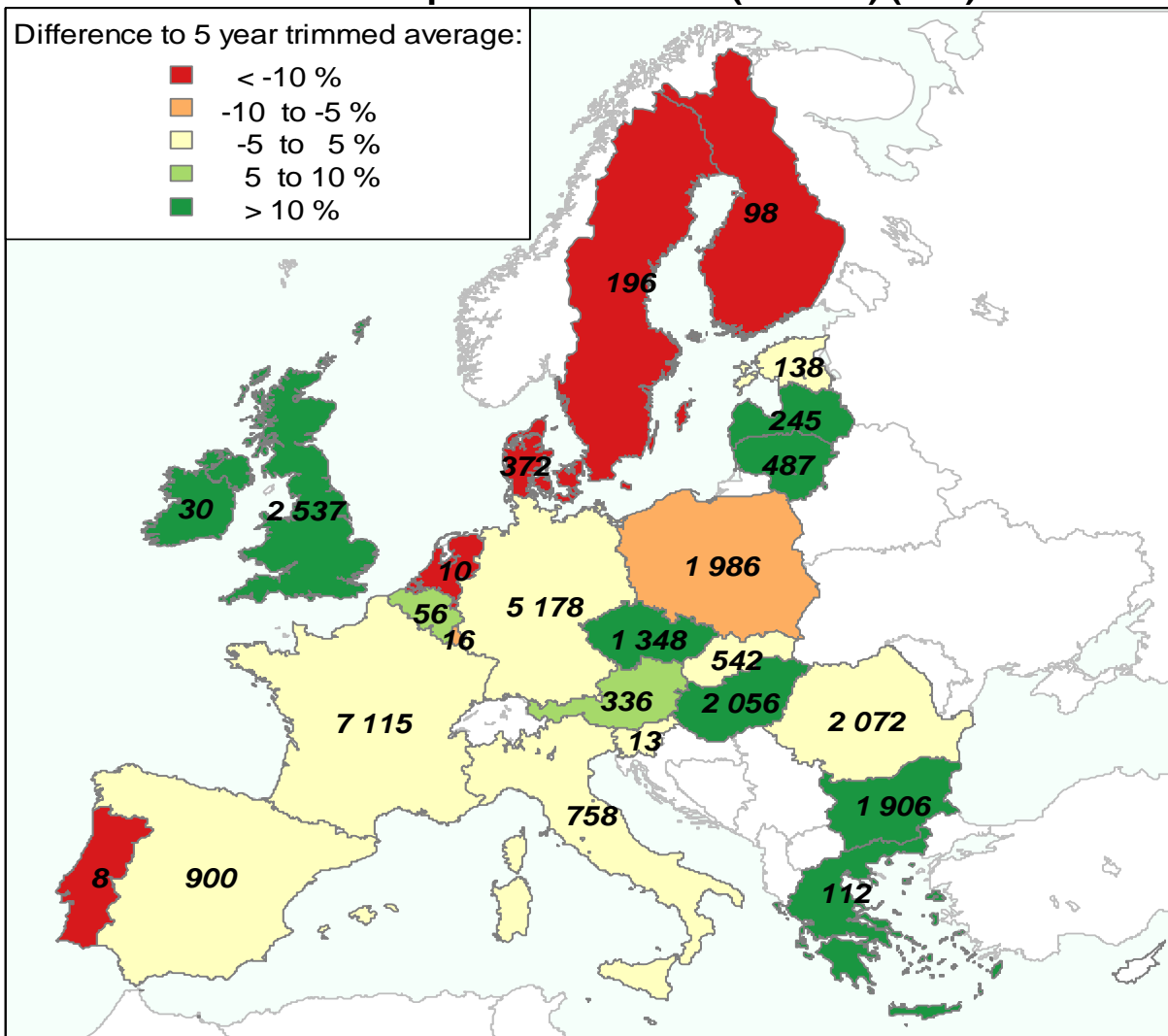


## EU 27 OILSEEDS & PROTEIN CROPS PRODUCTION

Mio t	AVG 5 yrs Trimmed	2011/12	2012/2013 March fcst	%change 2011/12	%change 5yrs trimmed
<b>TOTAL</b>	30,74	31,70	31,13	-1,8	1,3
Rapeseed	19,57	19,29	20,40	5,8	4,3
Sunflower	7,02	8,41	7,00	-16,8	-0,3
Soja	0,89	1,11	0,97	-13,1	9,0
Field peas	1,36	1,53	1,46	-4,6	7,2
Broad beans	1,18	1,14	1,08	-5,1	-8,3



### All oilseeds production 2012 ( 1000 t ) (est.)

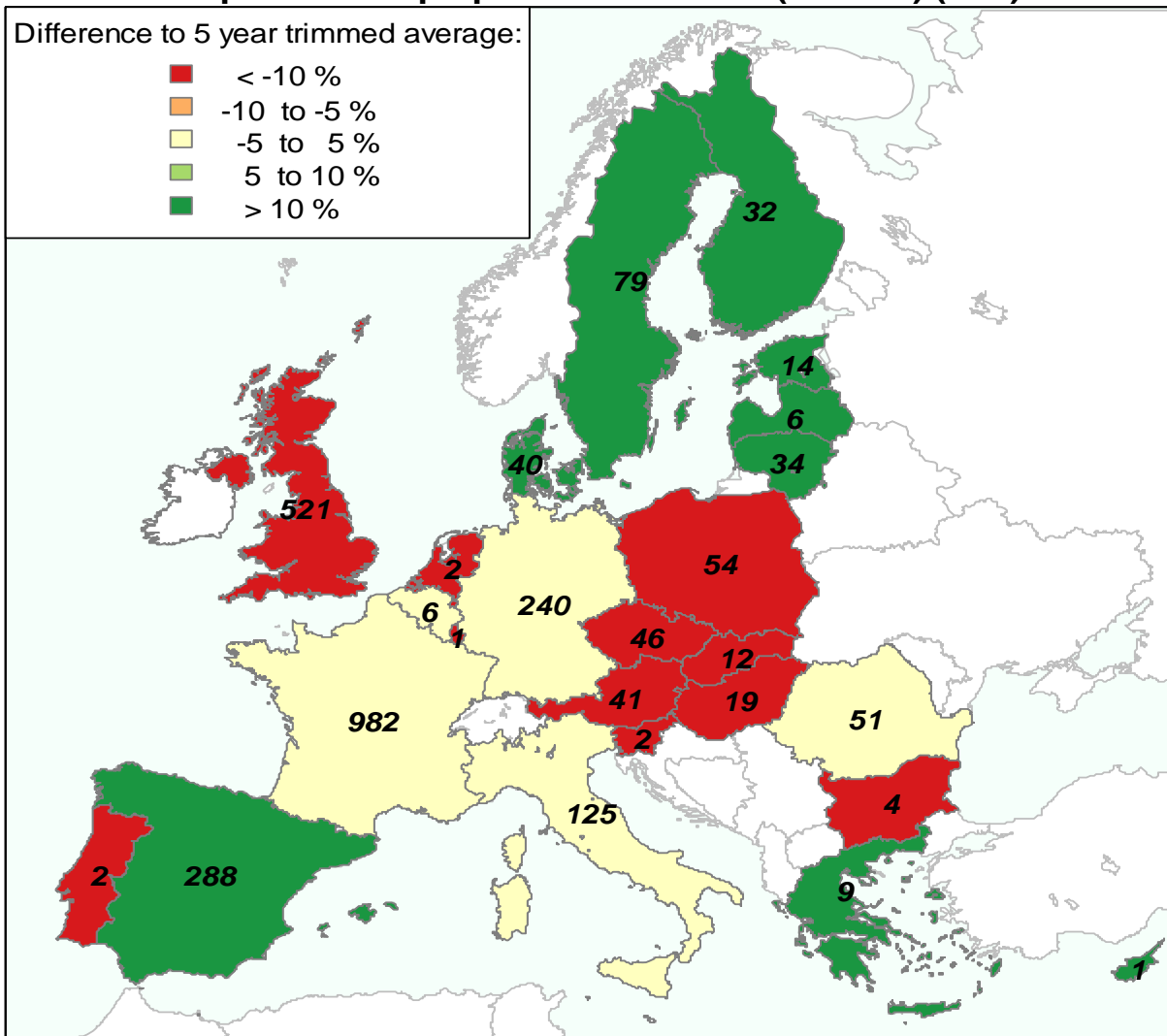


Calculations and cartography : European Commission DG AGRI C5 2012-09-27 © EuroGeographics for the administrative boundaries

EU27 production : 28 517 ( 1000 t ) Difference to 5 year trimmed average: 1 %



### All protein crops production 2012 ( 1000 t ) (est.)



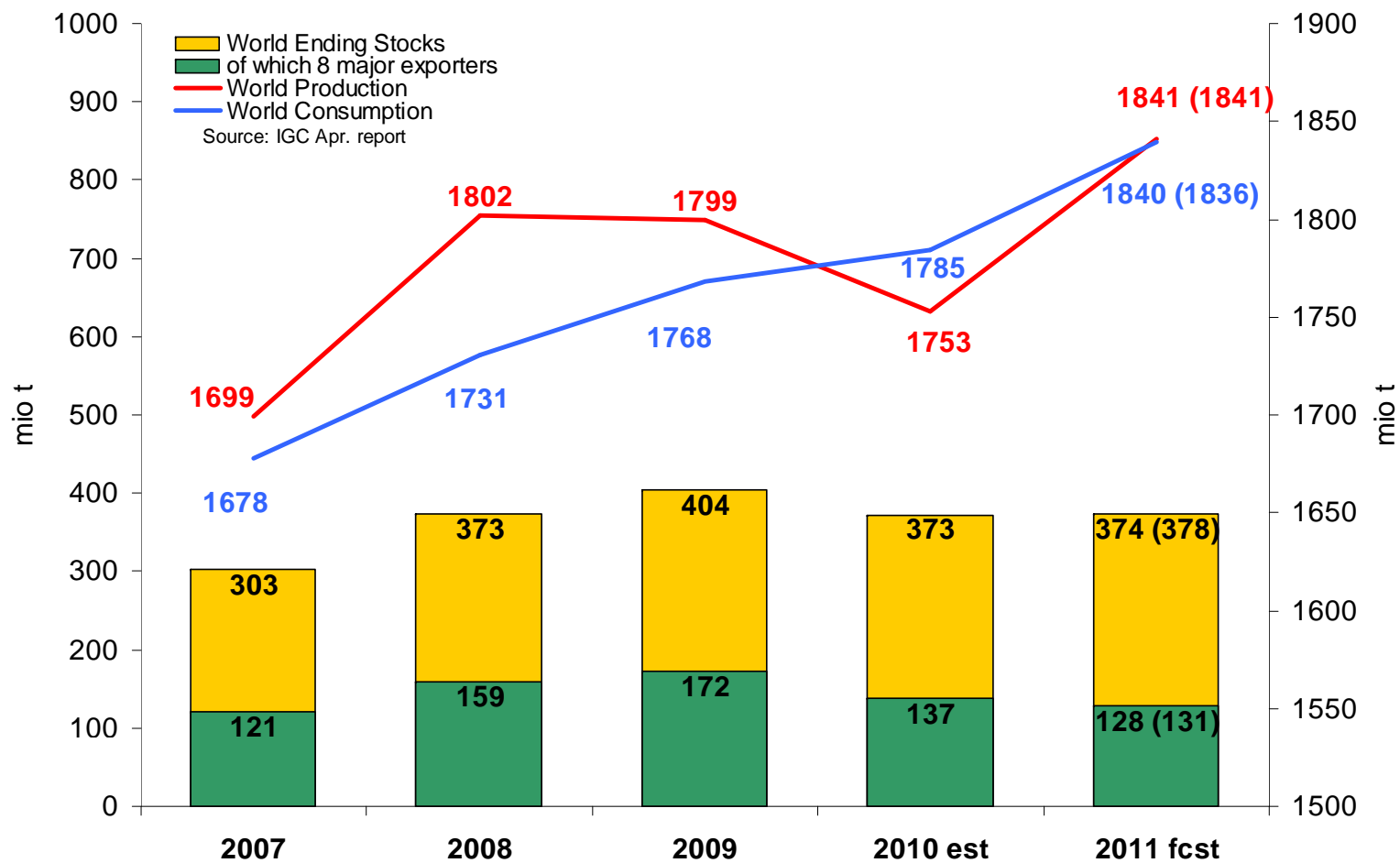
Calculations and cartography : European Commission DG AGRI CS 2012-09-27 © EuroGeographics for the administrative boundaries

EU27 production : 2 608 ( 1000 t ) Difference to 5 year trimmed average: 0 %



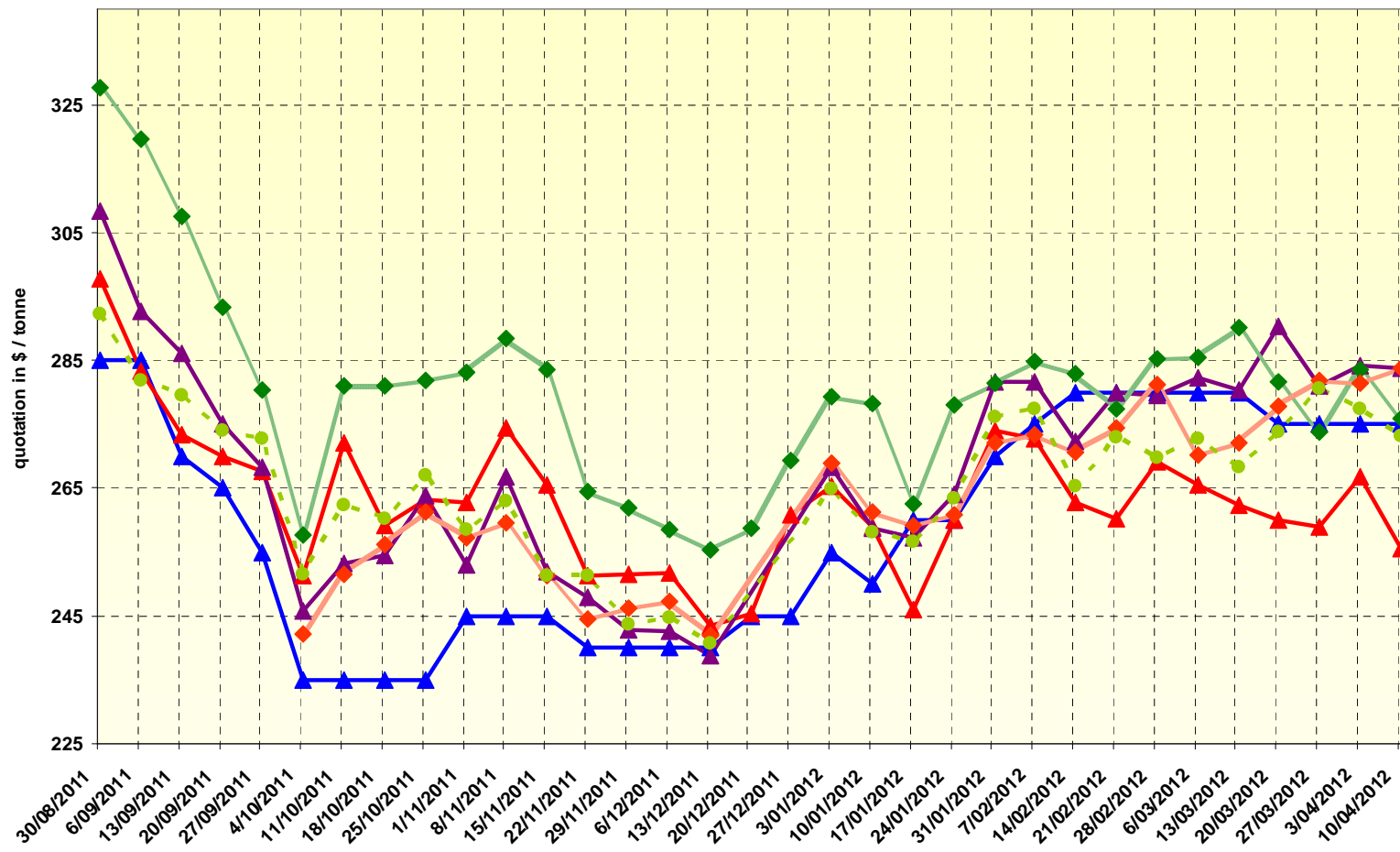
# World and EU markets for cereals and oilseeds

## World cereals: IGC

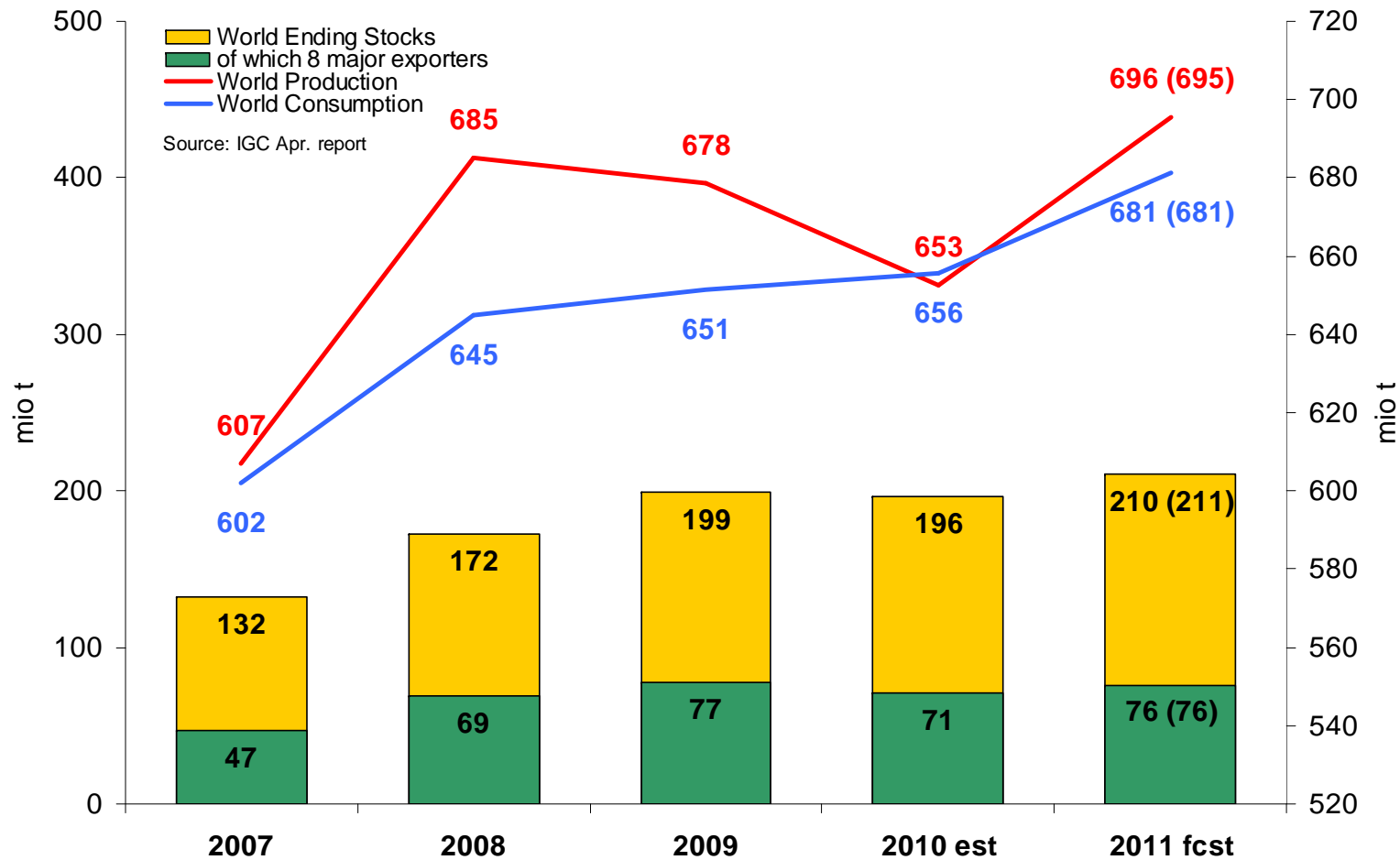


# World cereal prices since 30 August 2011 (\$/t)

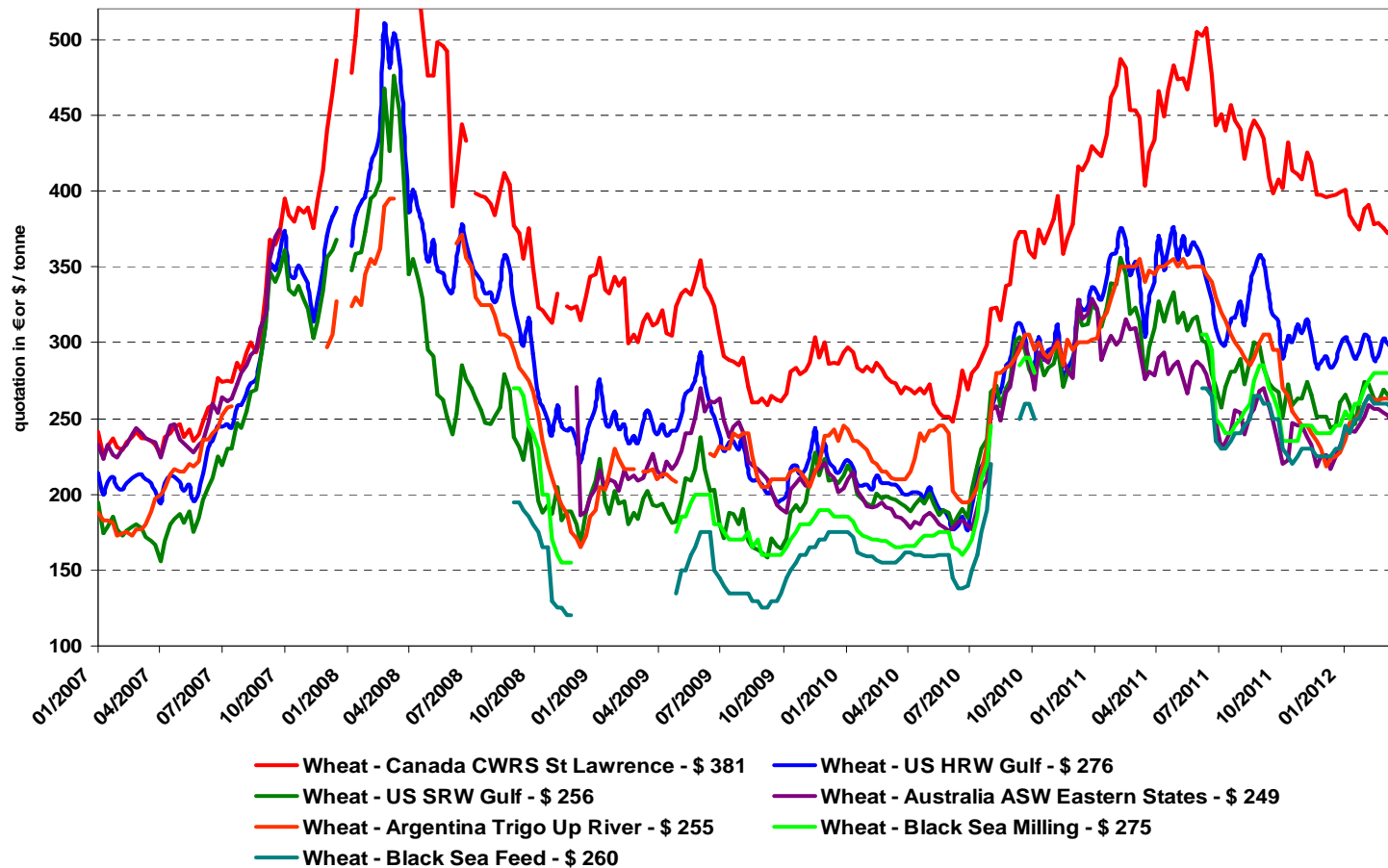
- ▲ Wheat - Black Sea Milling - \$ 275
 ▲ Wheat - US SRW Gulf - \$ 256
 ▲ Wheat - FR Rouen - \$ 284
- ◆ Maize - US 3YC Gulf - \$ 276
 ◆ Maize - FR Bordeaux - \$ 284
 ◆ Barley - FR Divd Rouen feed - \$ 273



# World wheat: IGC

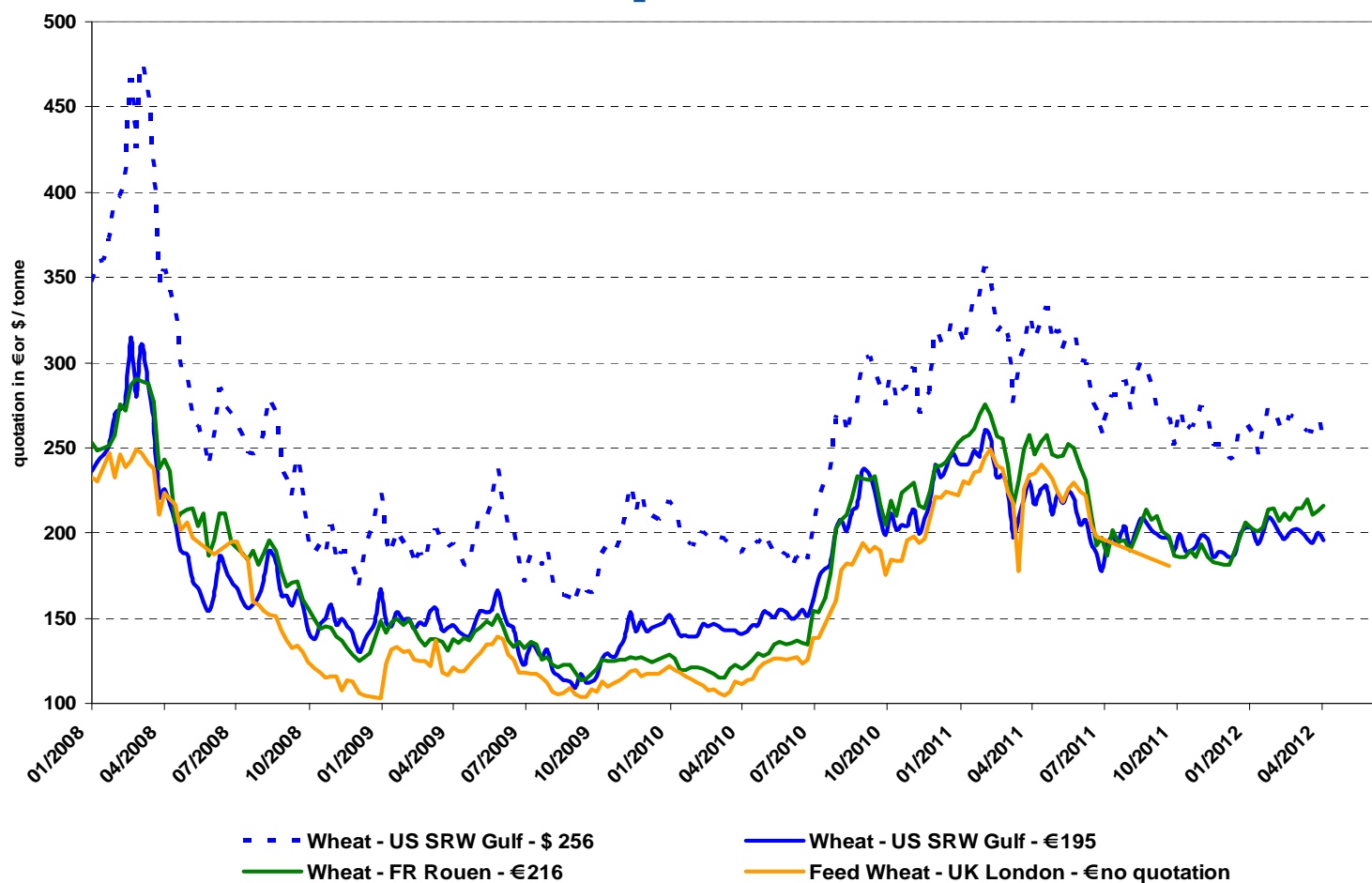


# Wheat export prices since 1/1/2007

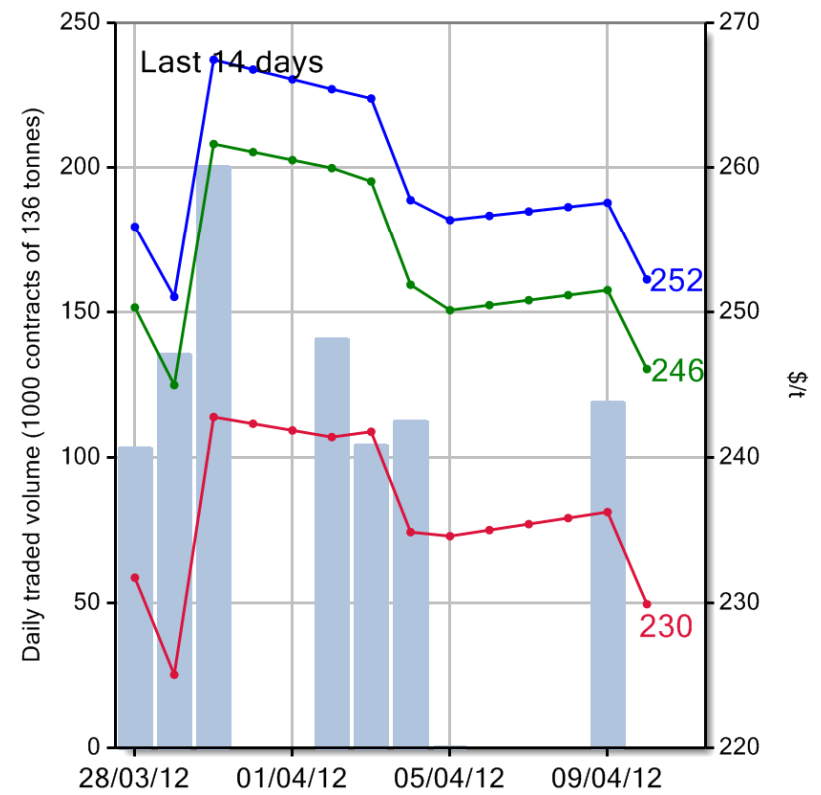
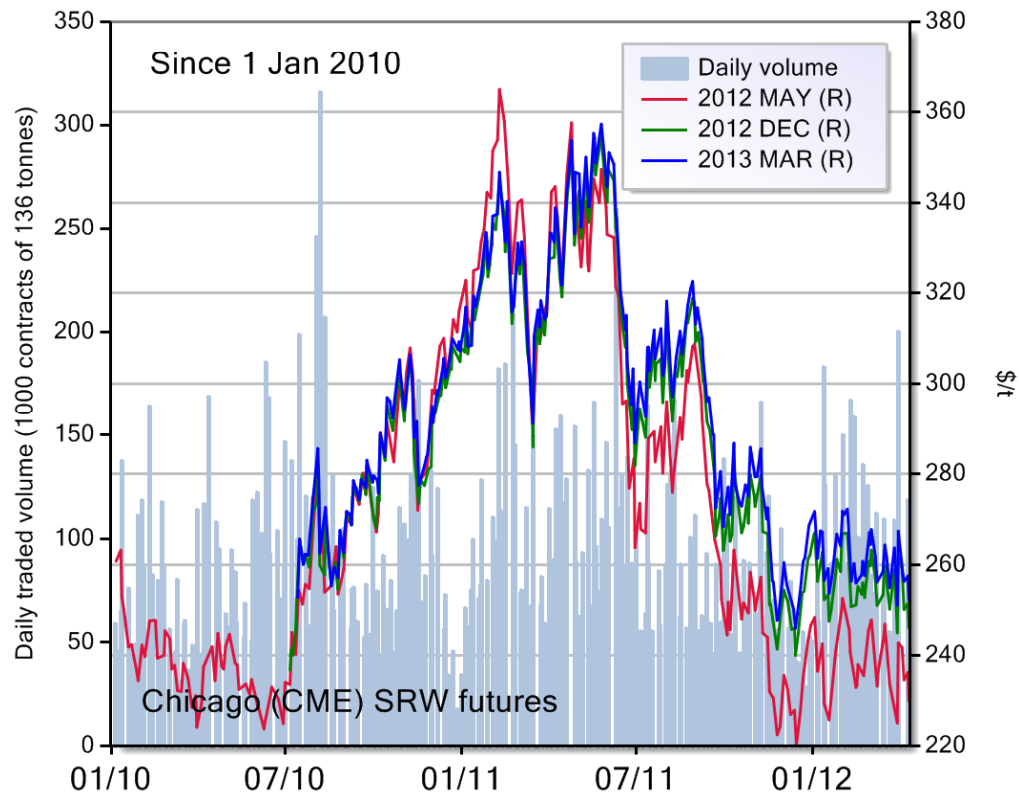




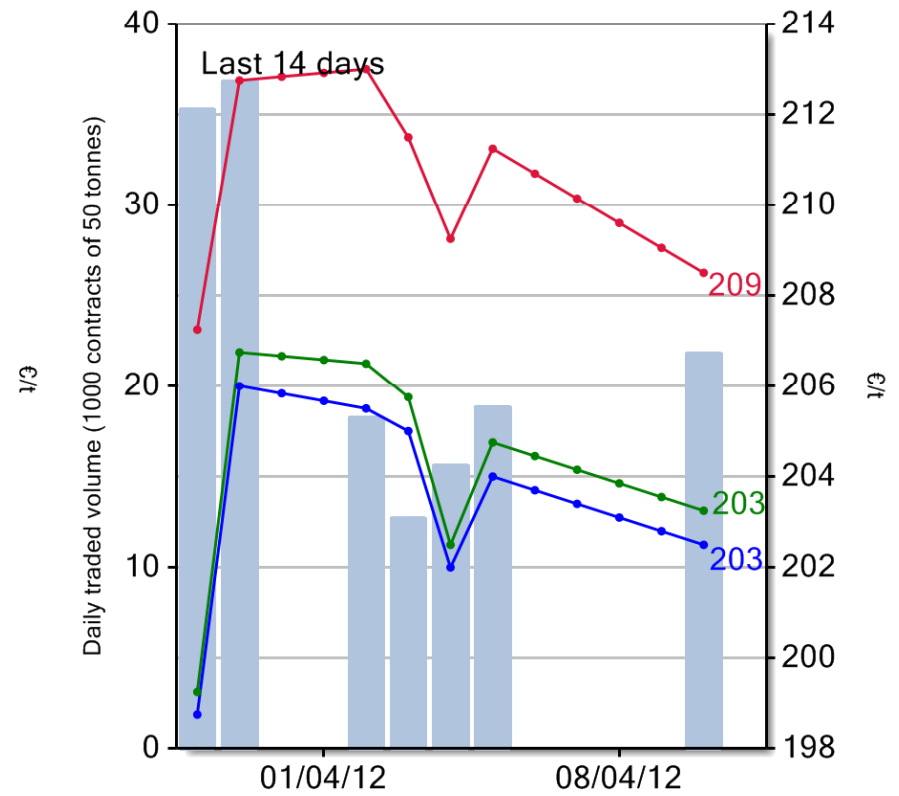
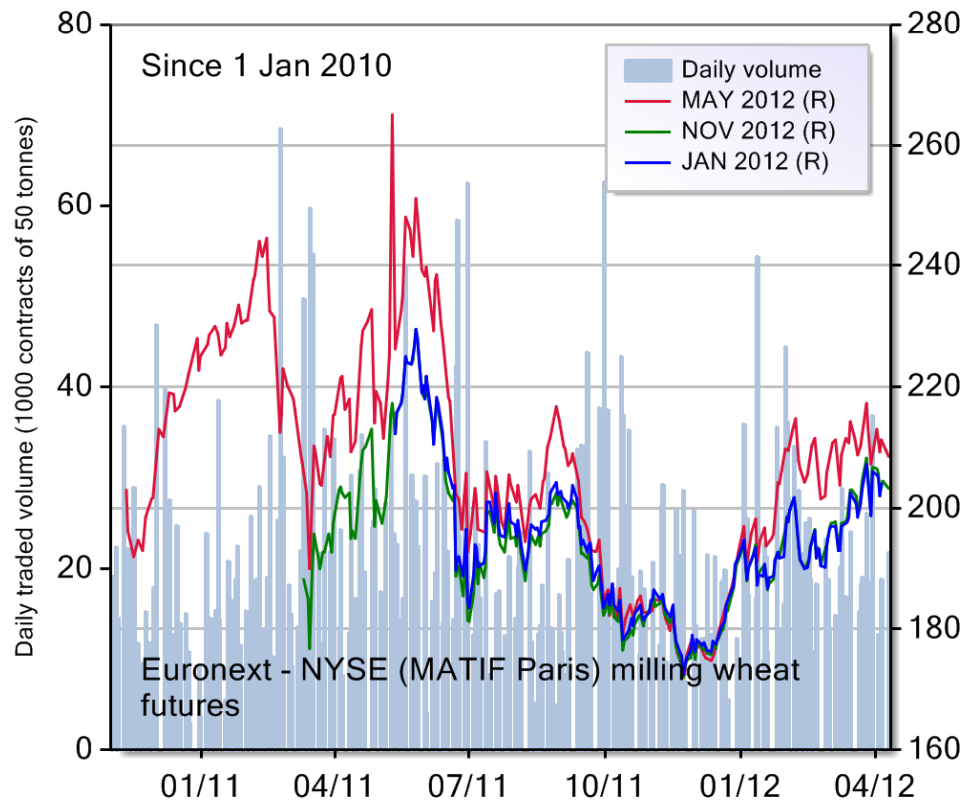
# US vs. EU Wheat prices since 1/1/2008



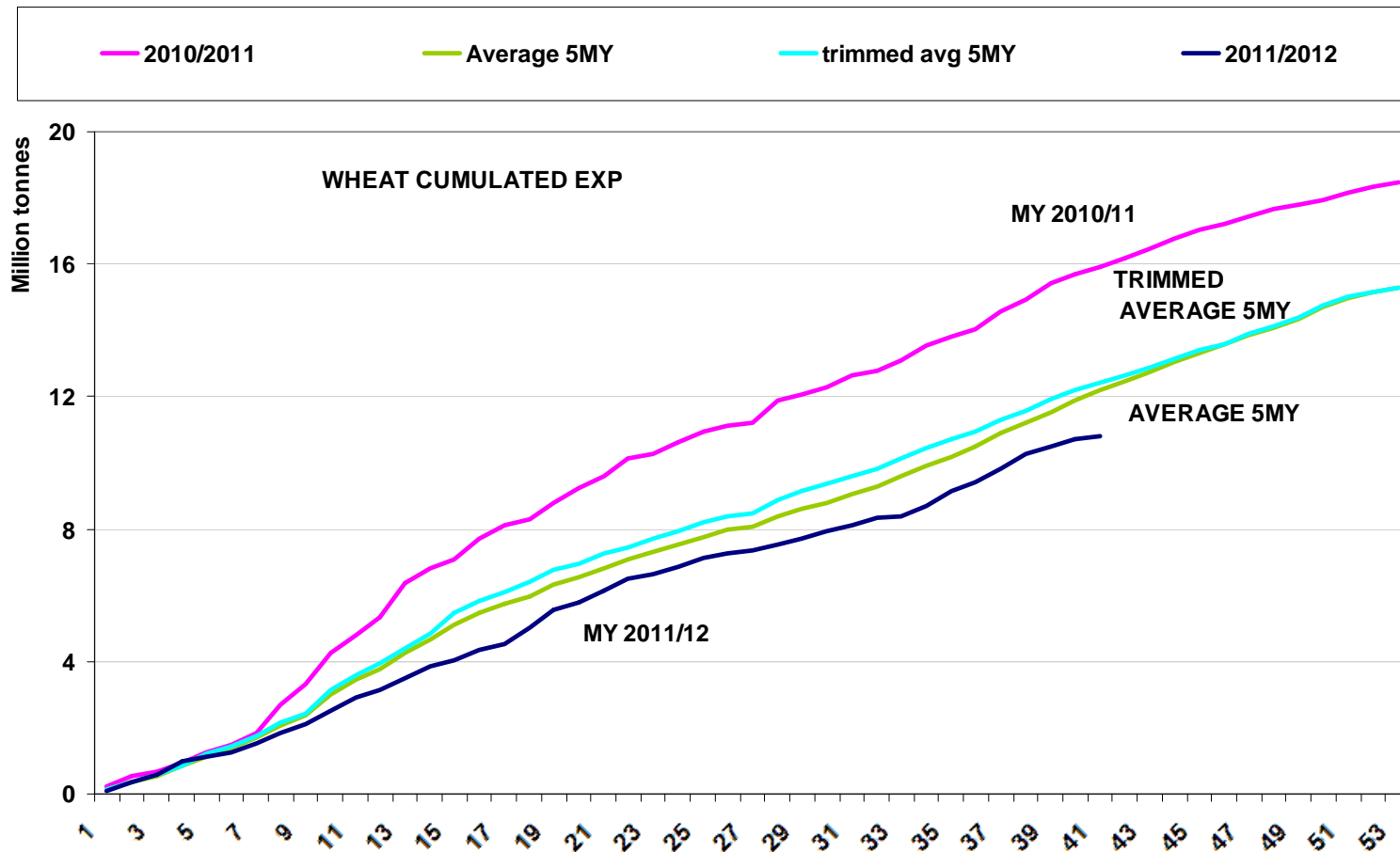
# US SRW wheat futures



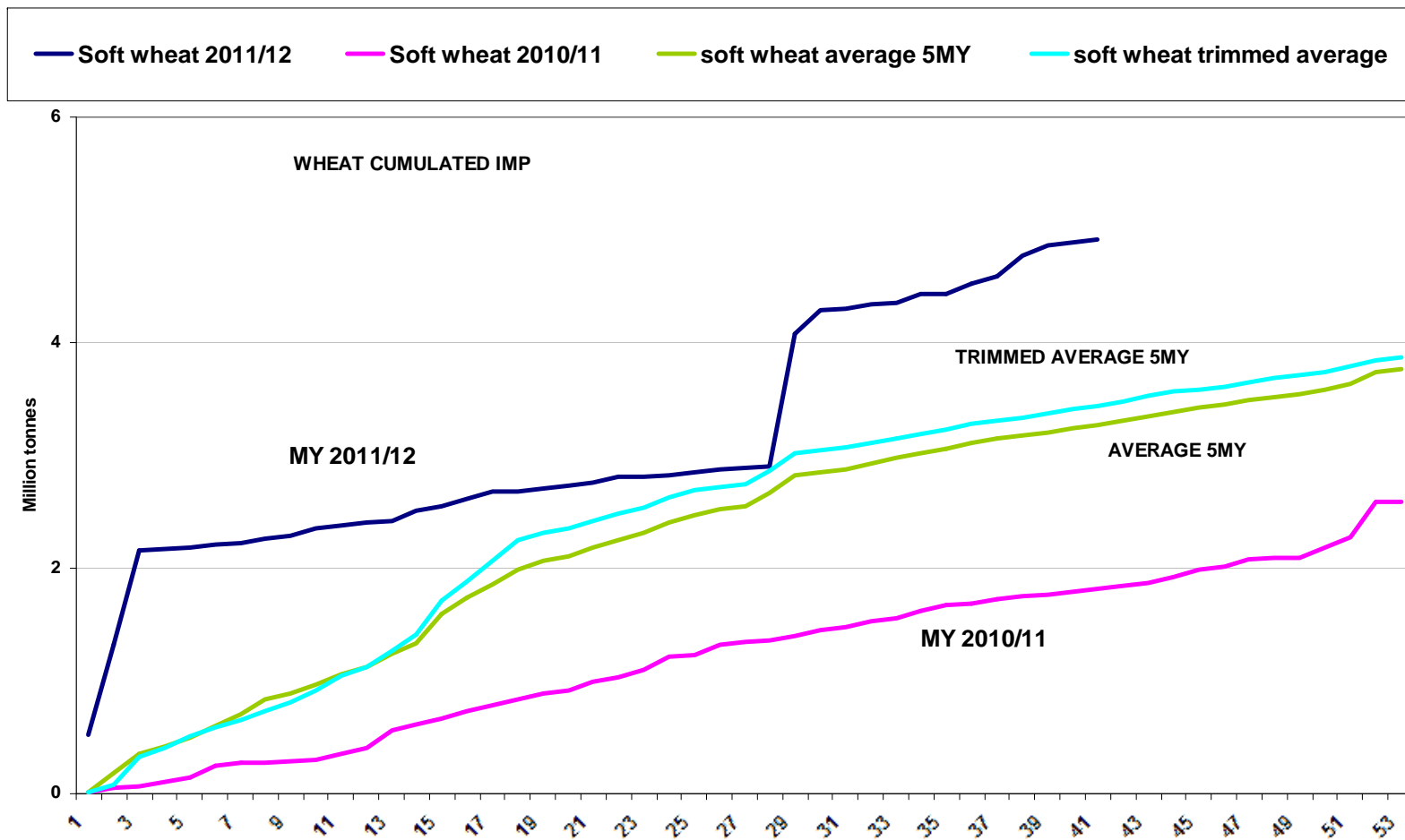
# EU Milling Wheat Futures since 01/2011



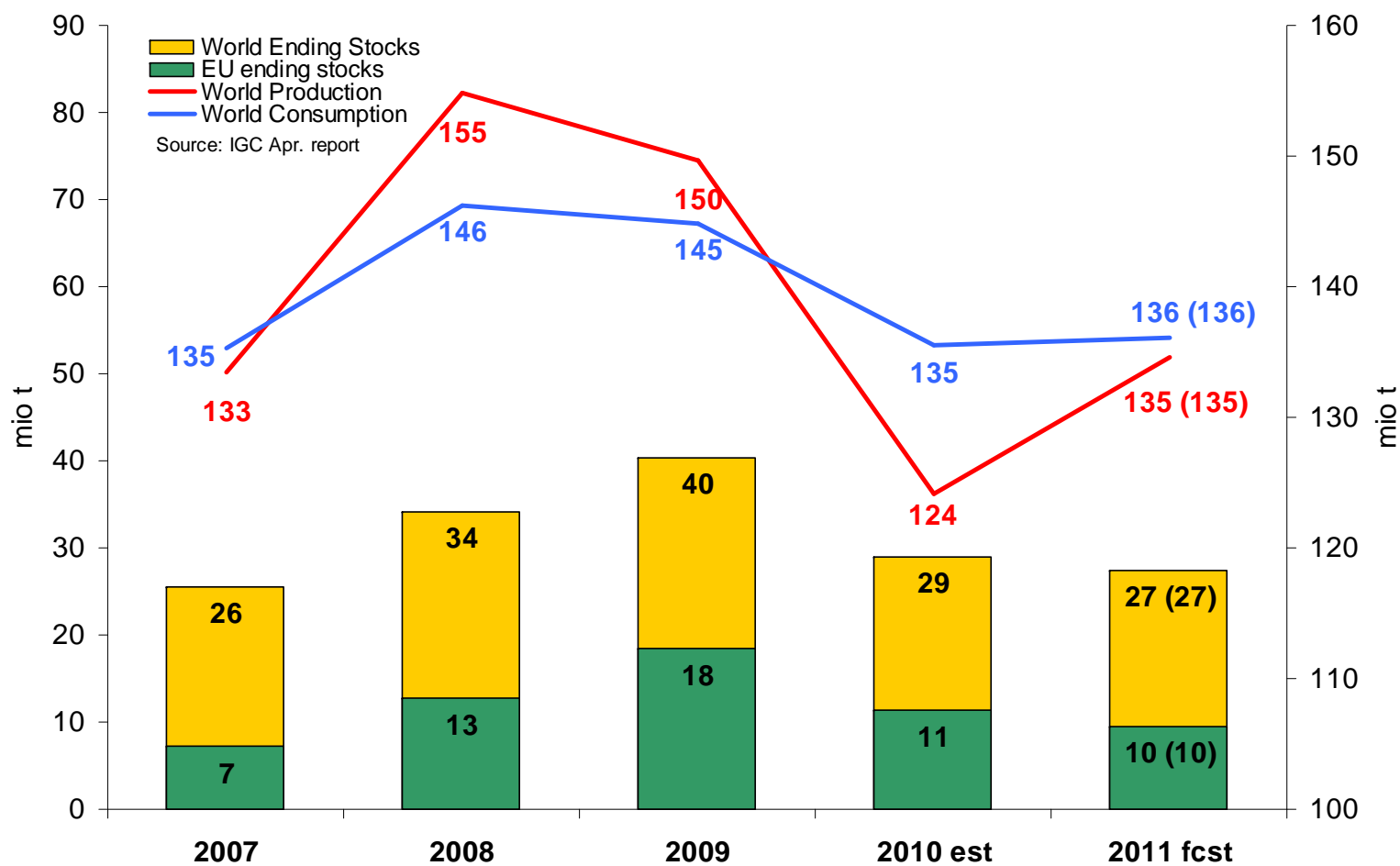
# EU wheat export commitments 2011/12



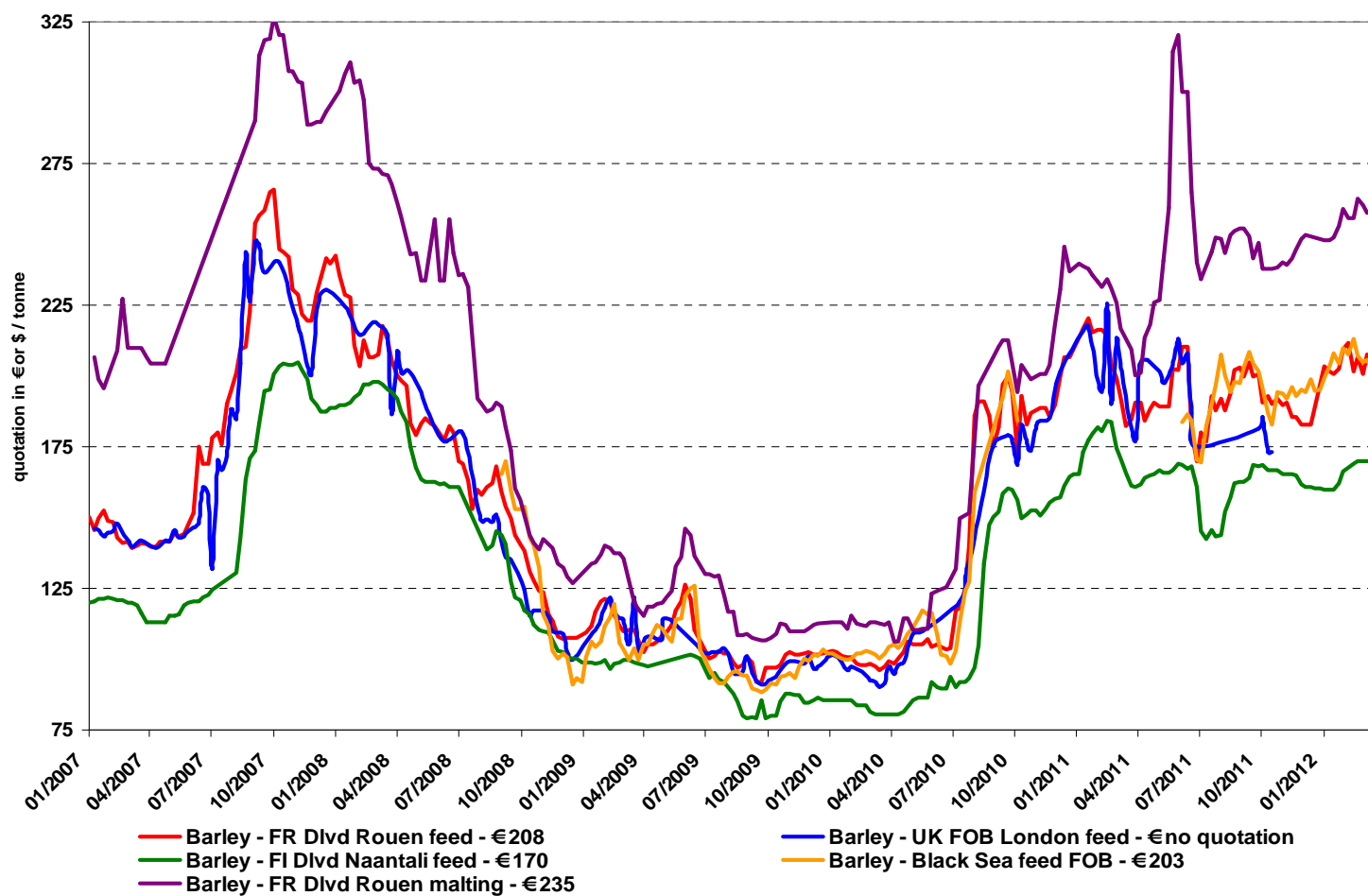
# EU wheat import commitments 2011/12



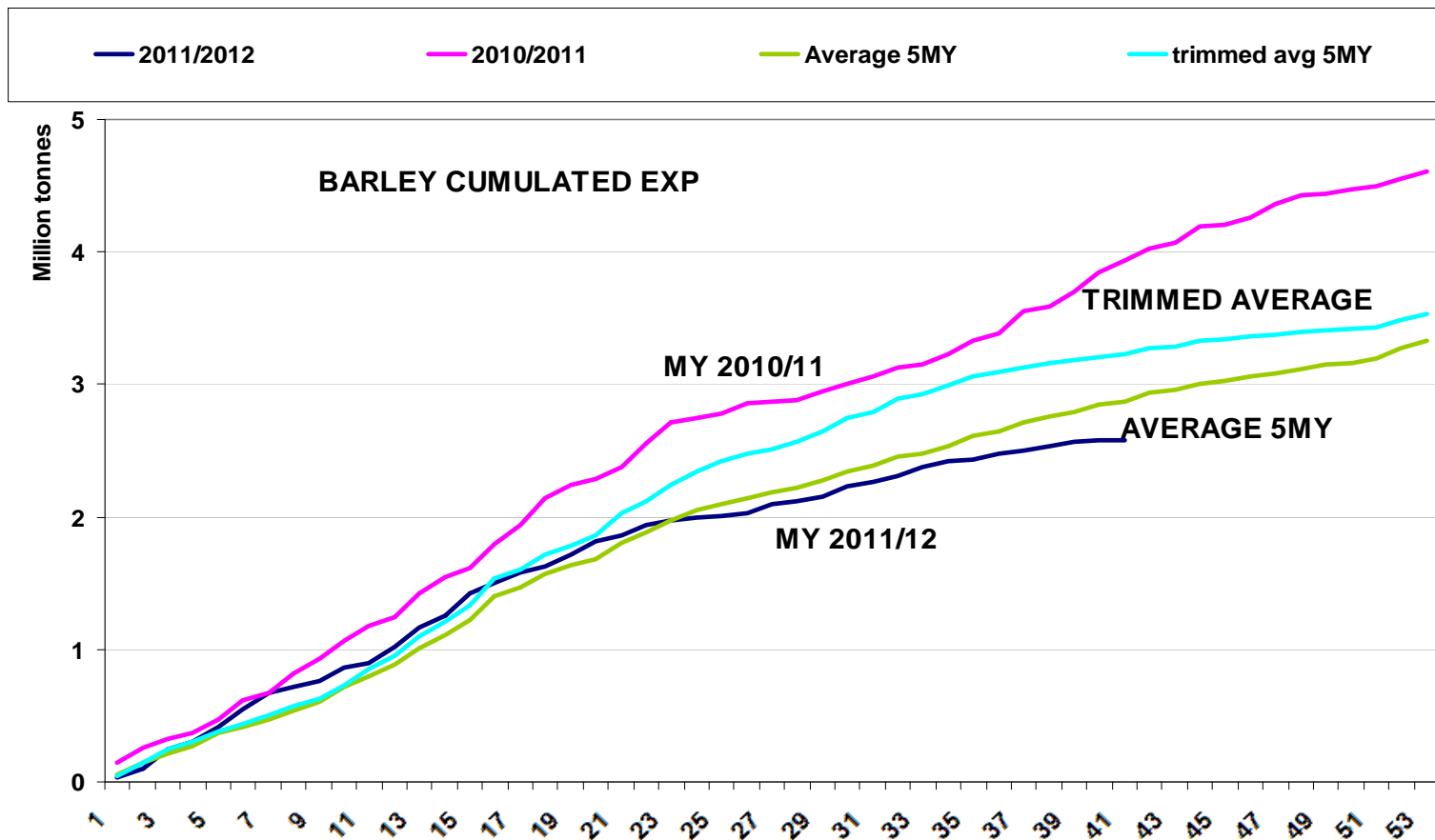
## World barley: IGC



## Barley prices since 01/2007

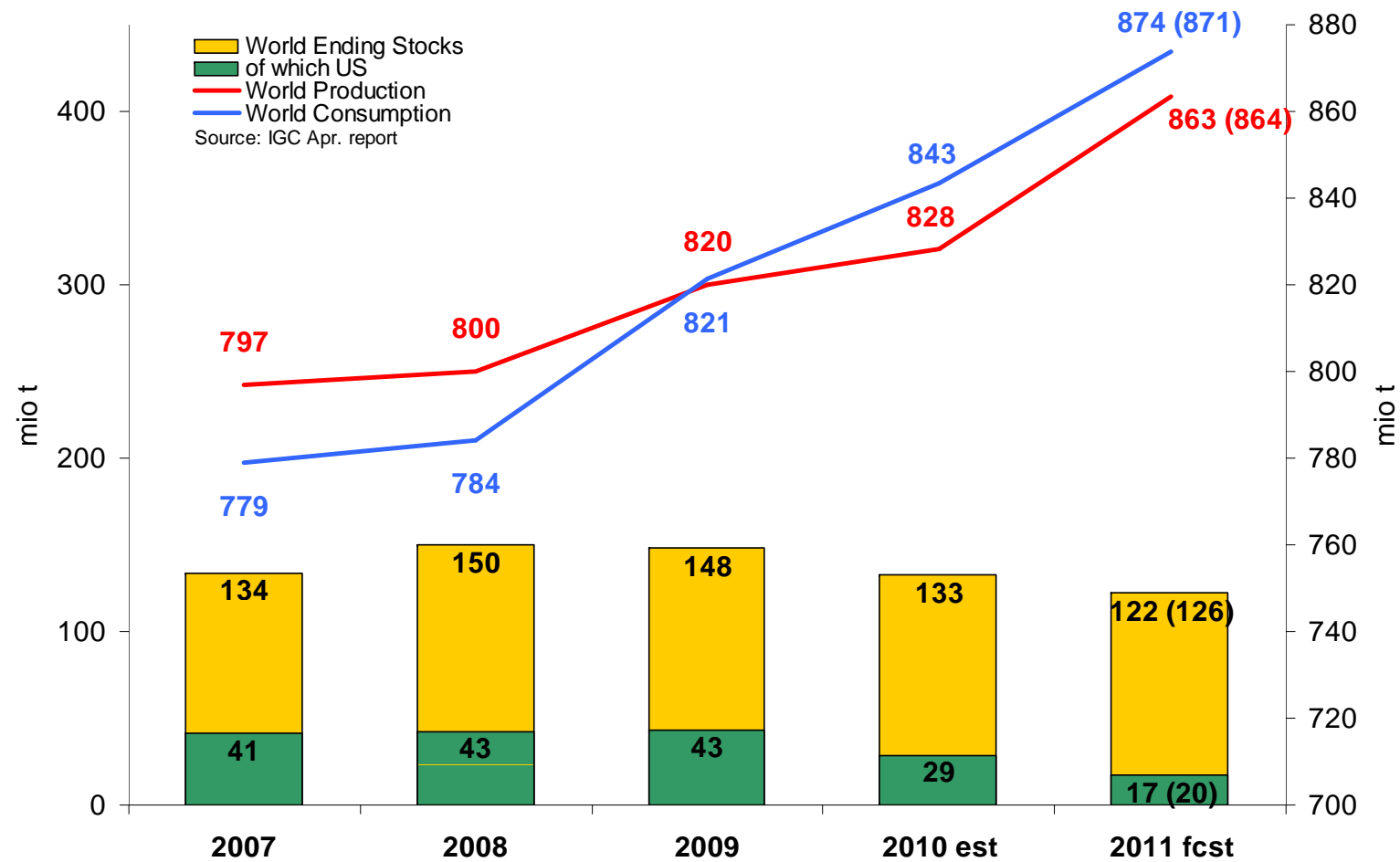


# EU barley export commitments 2011/12

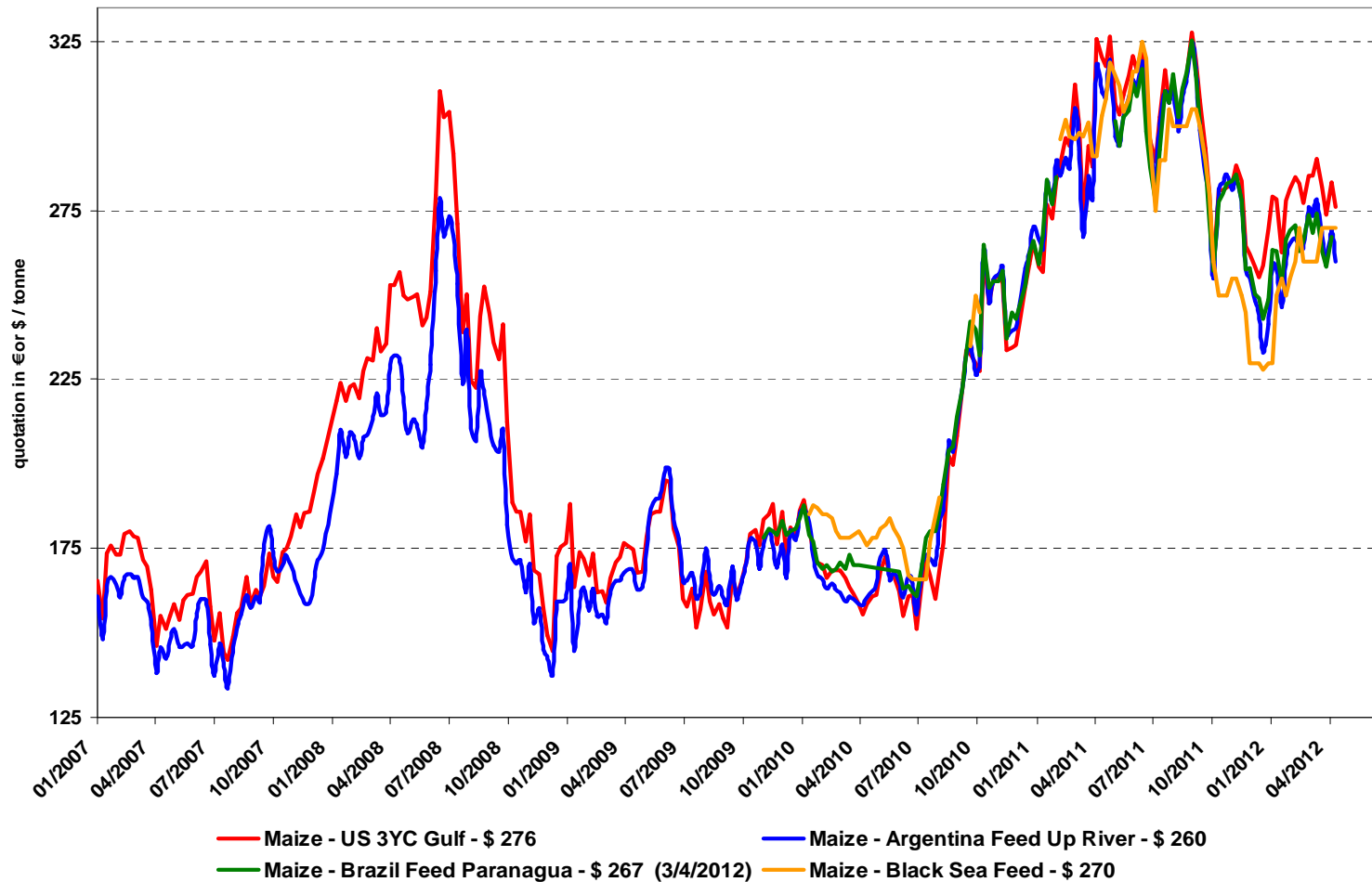




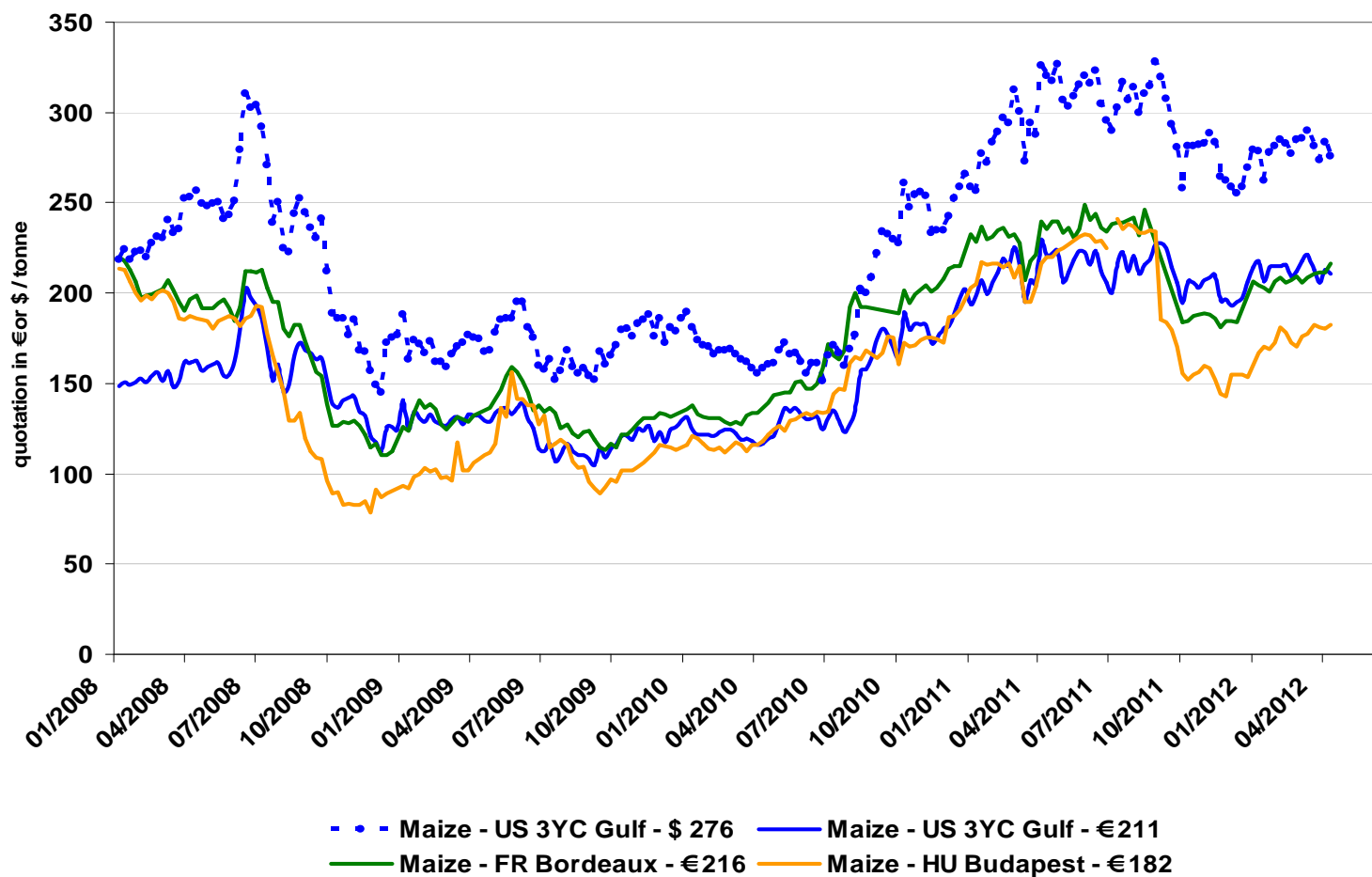
# World maize: IGC



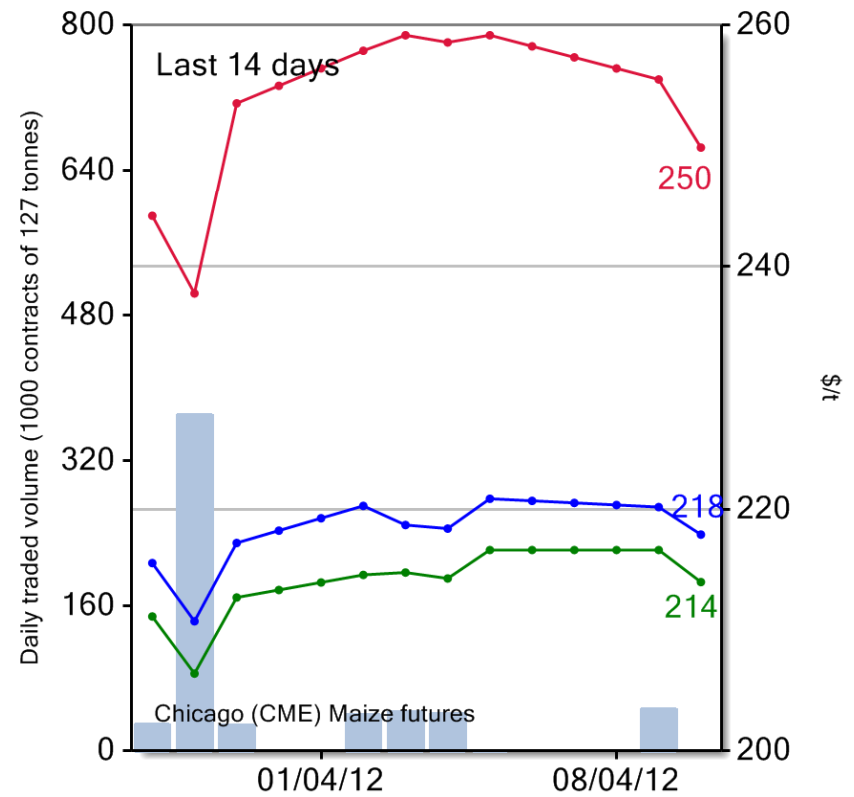
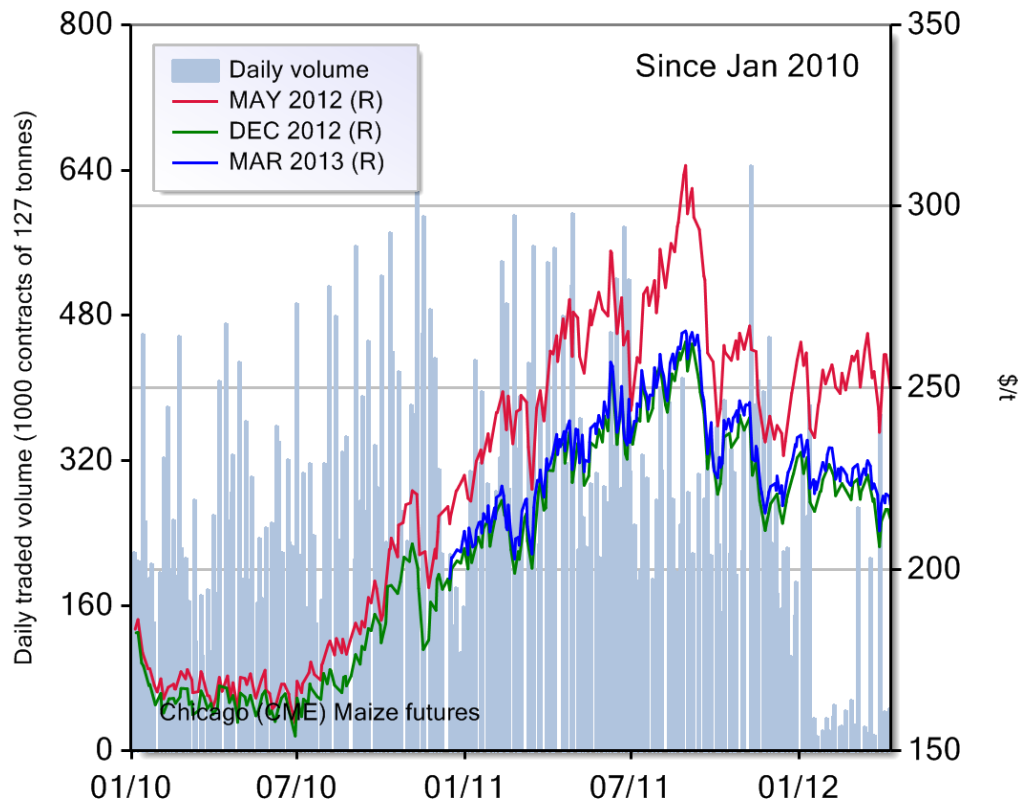
# Maize export prices since 1/1/2007



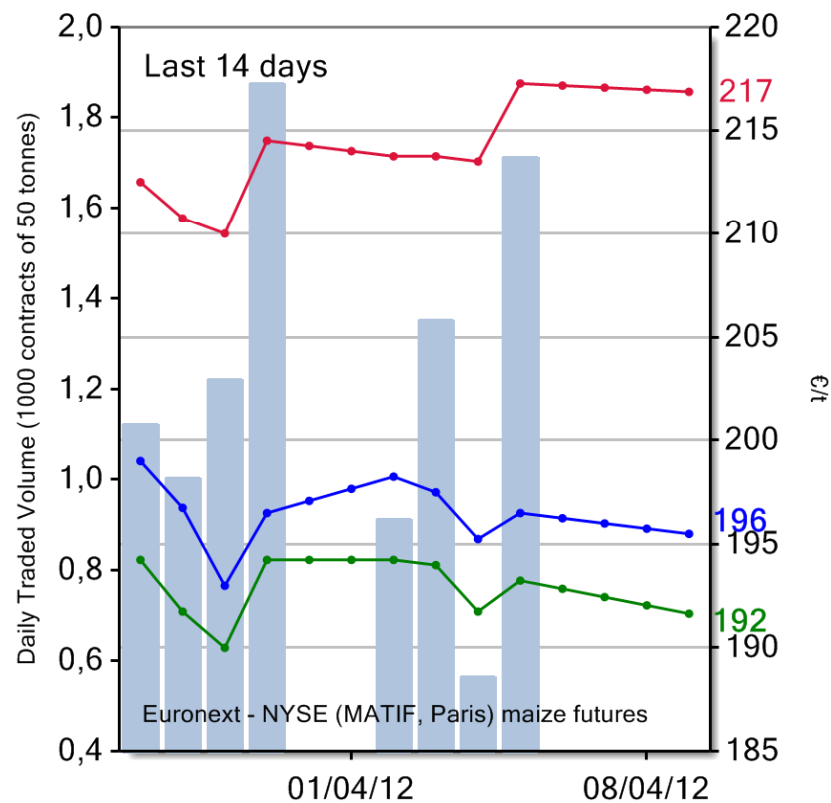
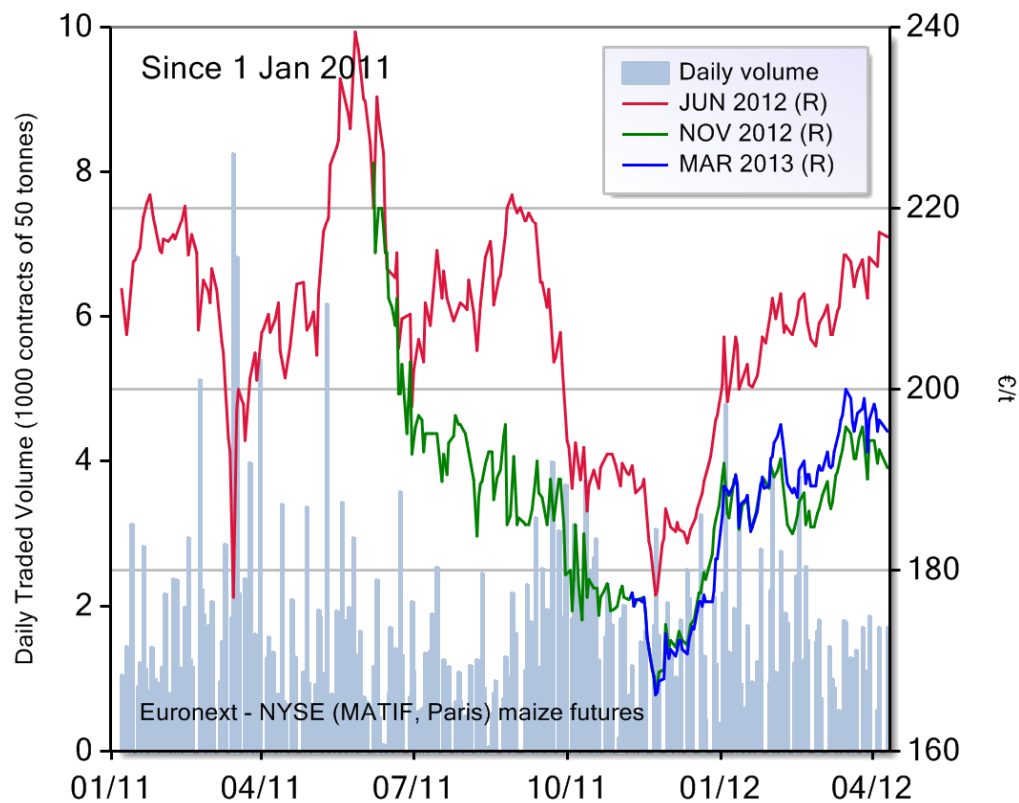
## US vs. EU maize prices since 1/1/2008



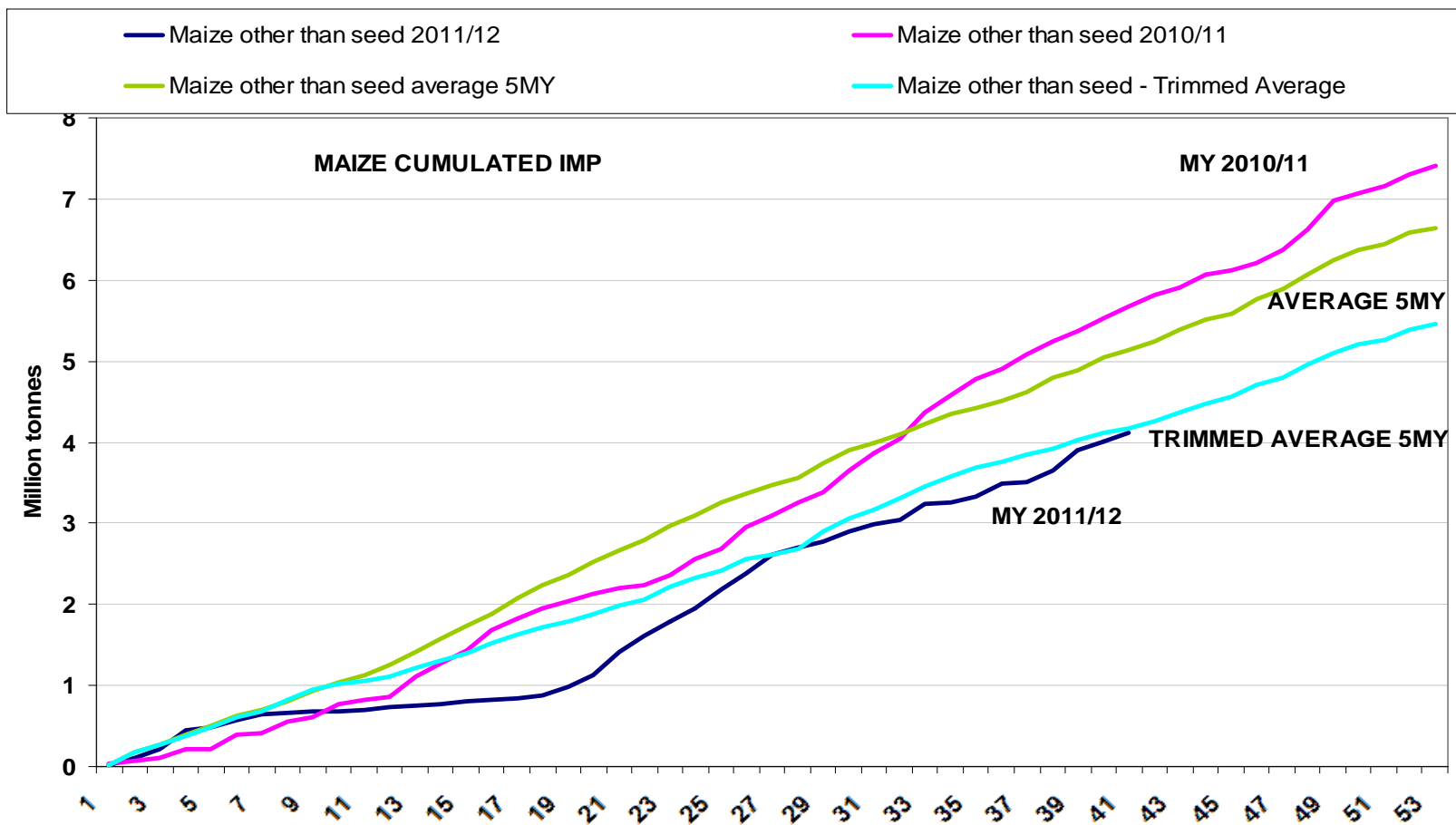
# CME maize futures since 01/2010



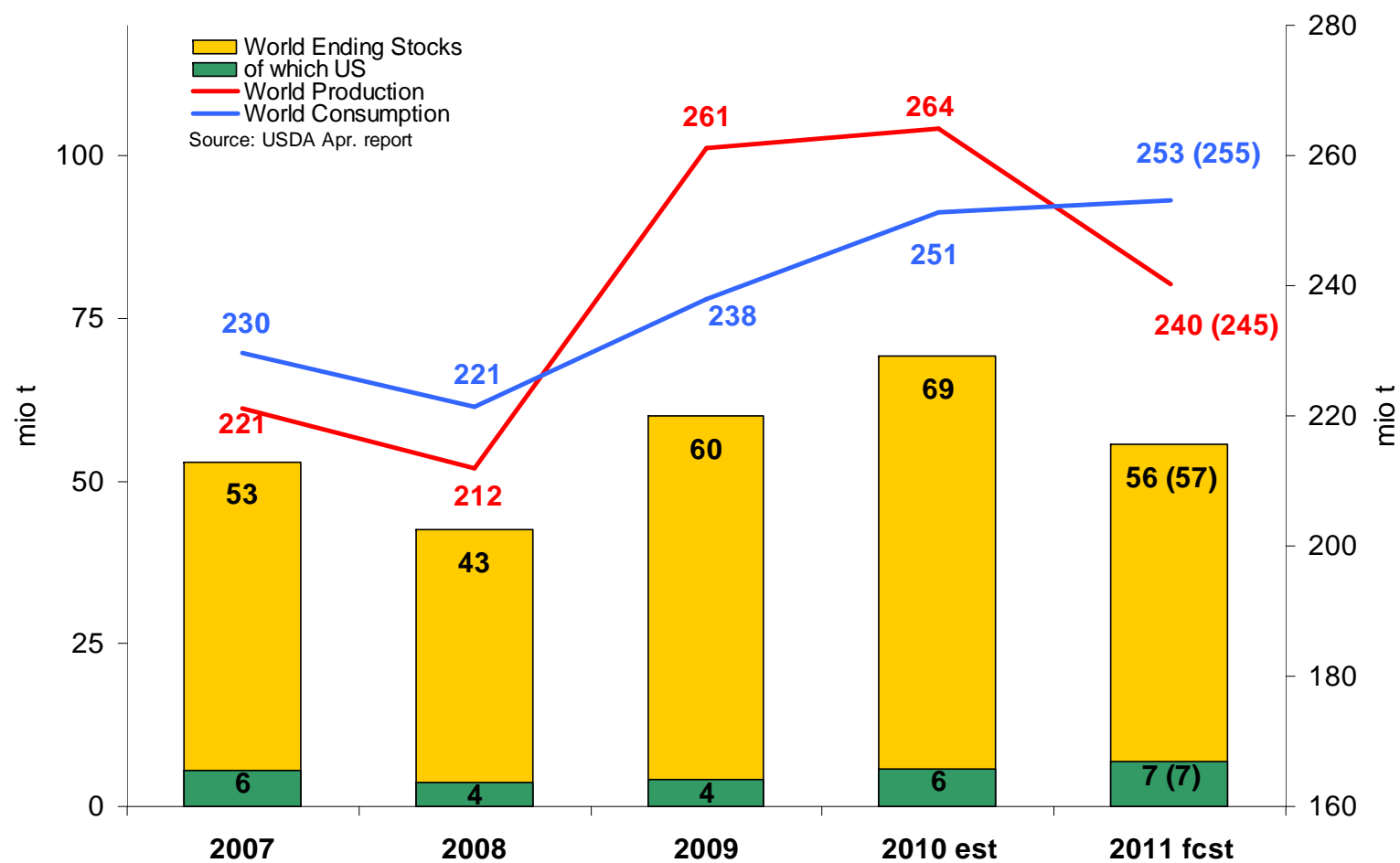
# EU maize futures since 01/2011



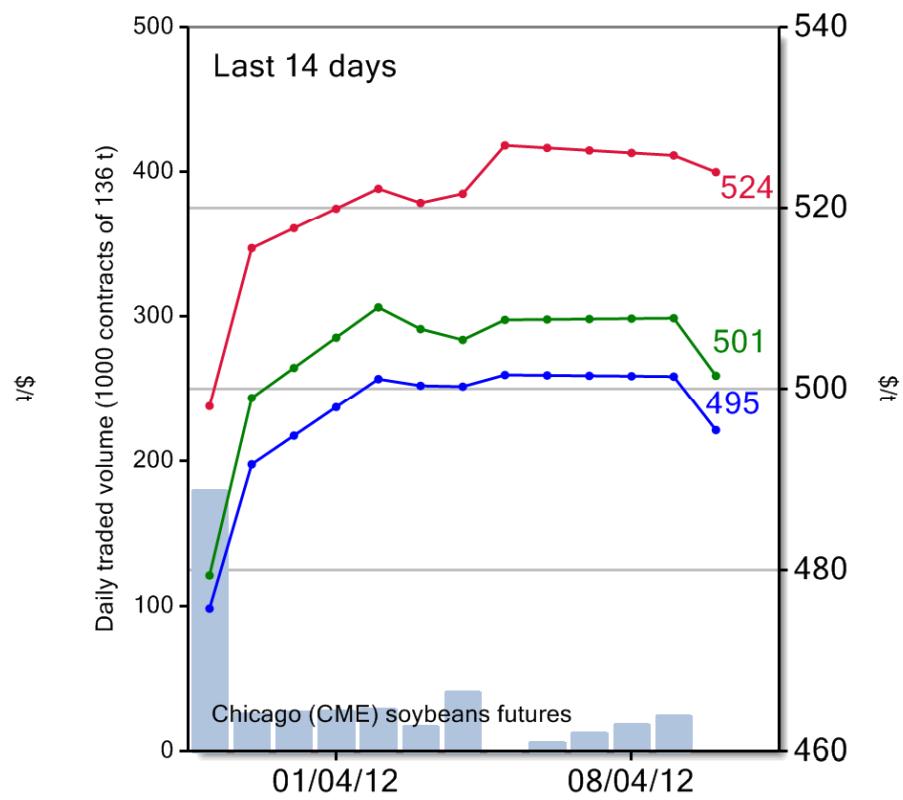
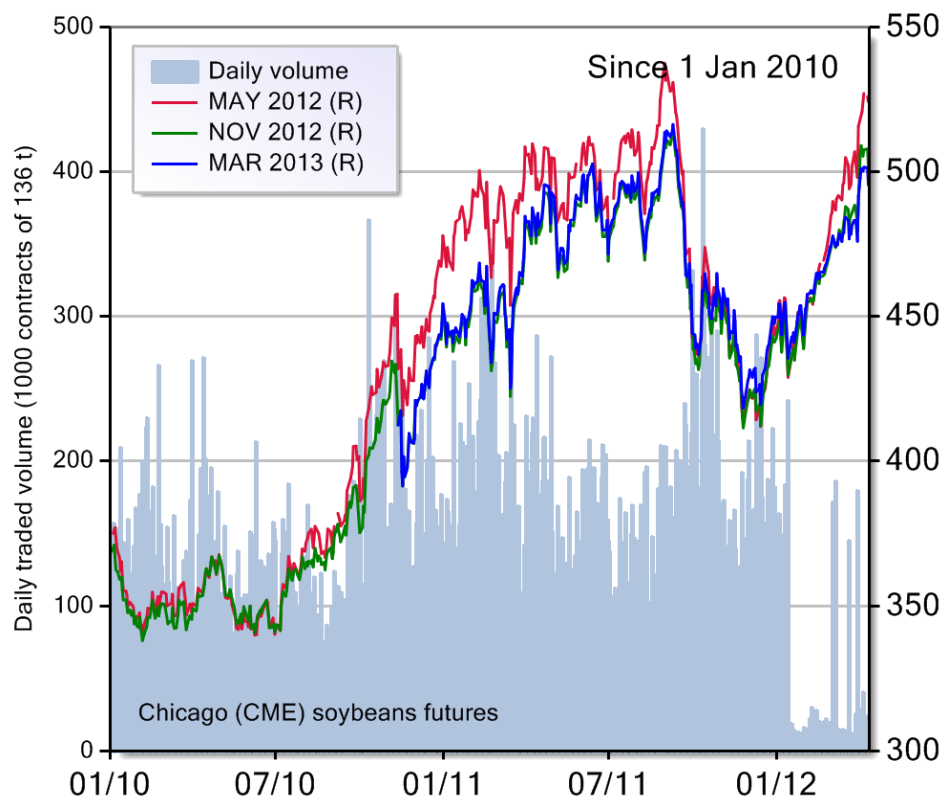
# EU Maize import commitments 2011/12



## World soya balance sheet: USDA

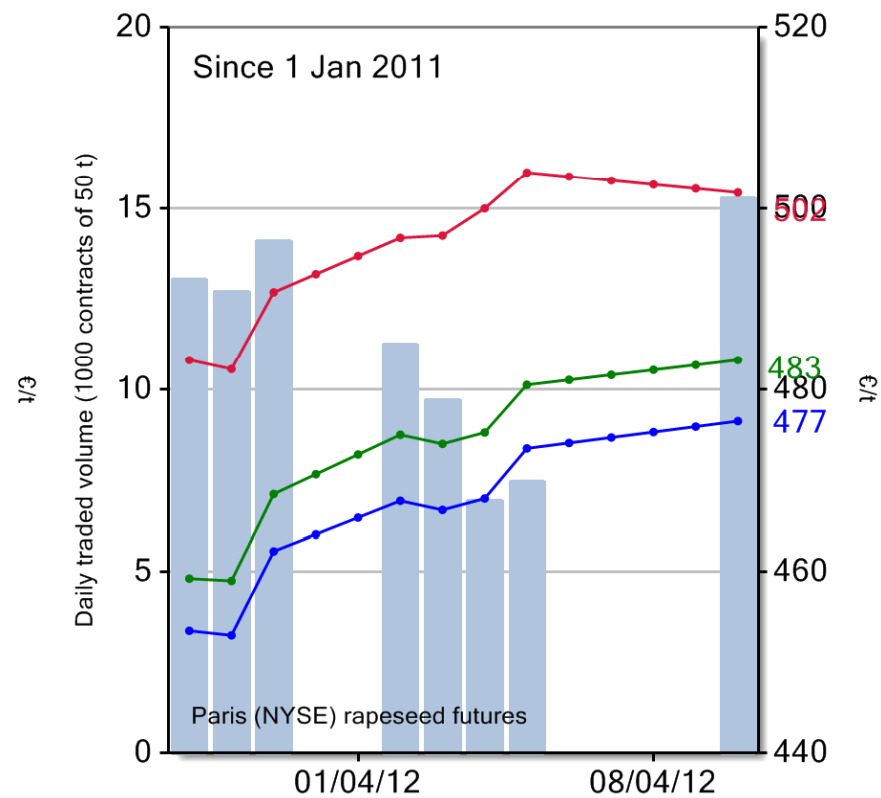
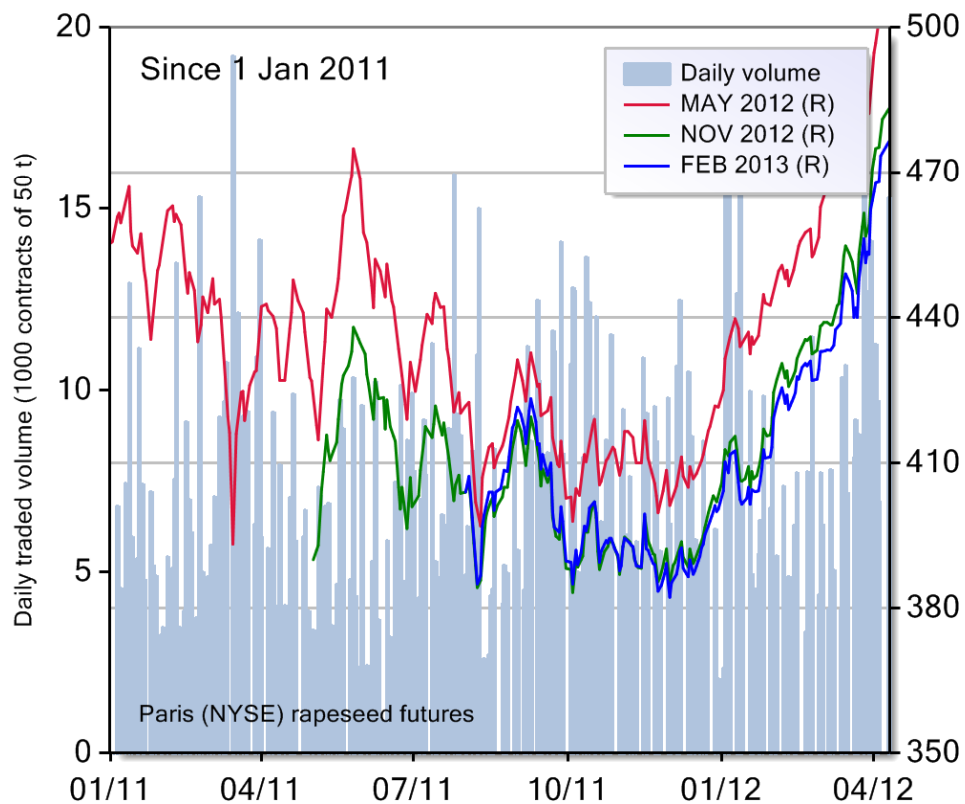


# CME soya futures since 01/2010





# NYSE Euronext rapeseed futures since 01/2011





**Thank you for your attention!**

**Balance sheet updates & market presentation  
available:**

**[http://ec.europa.eu/agriculture/cereals/balance-sheets/index\\_en.htm](http://ec.europa.eu/agriculture/cereals/balance-sheets/index_en.htm)**