



European Commission
Agriculture and Rural Development



Review of the situation on the EU Beef and Veal Market

“Advisory group on Beef/Veal”

29 November 2011



Evolution EU production

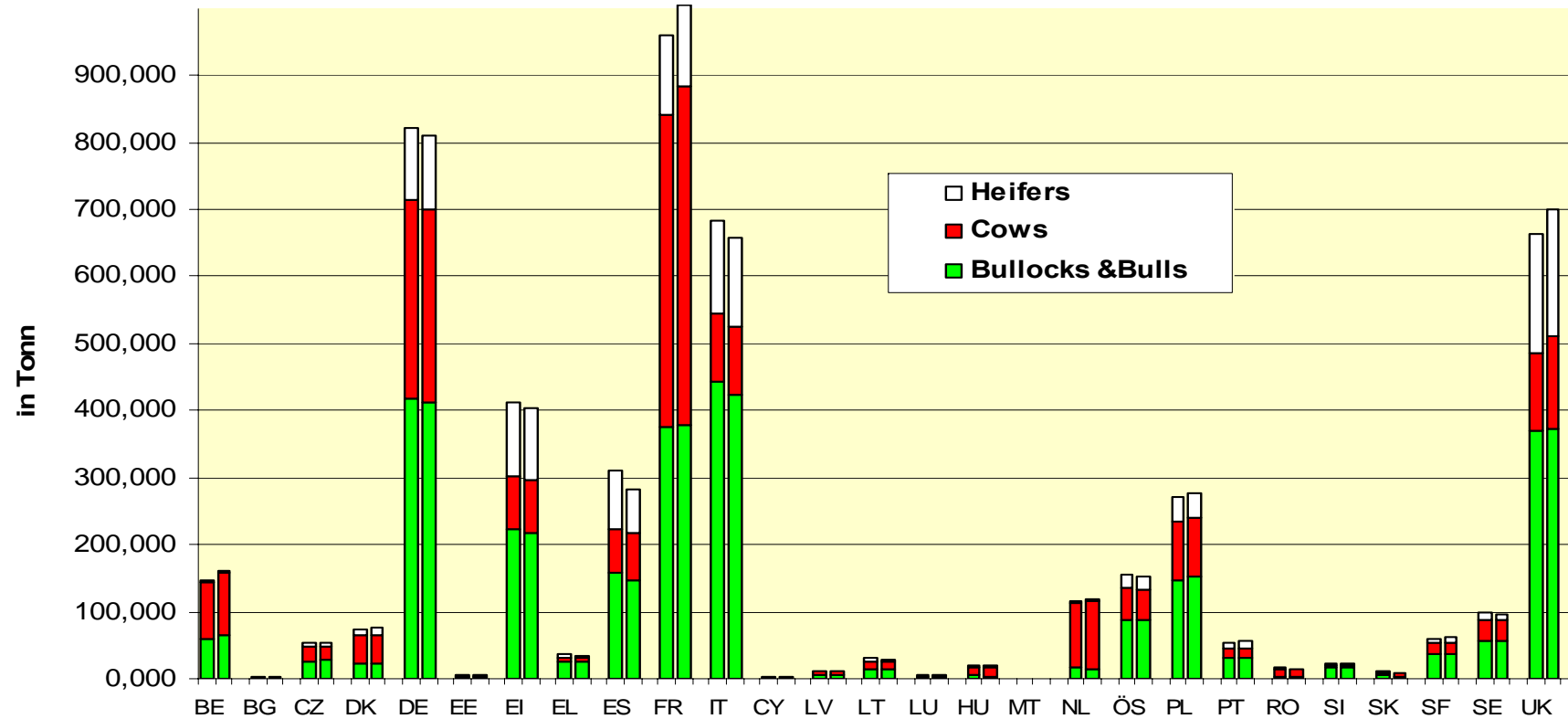


European Commission
Agriculture and Rural Development

Change in Adult Cattle Slaughter

(Bulls, Bullocks, Cows & Heifers)

Jan. - September 2010 / 2011



Evolution EU production



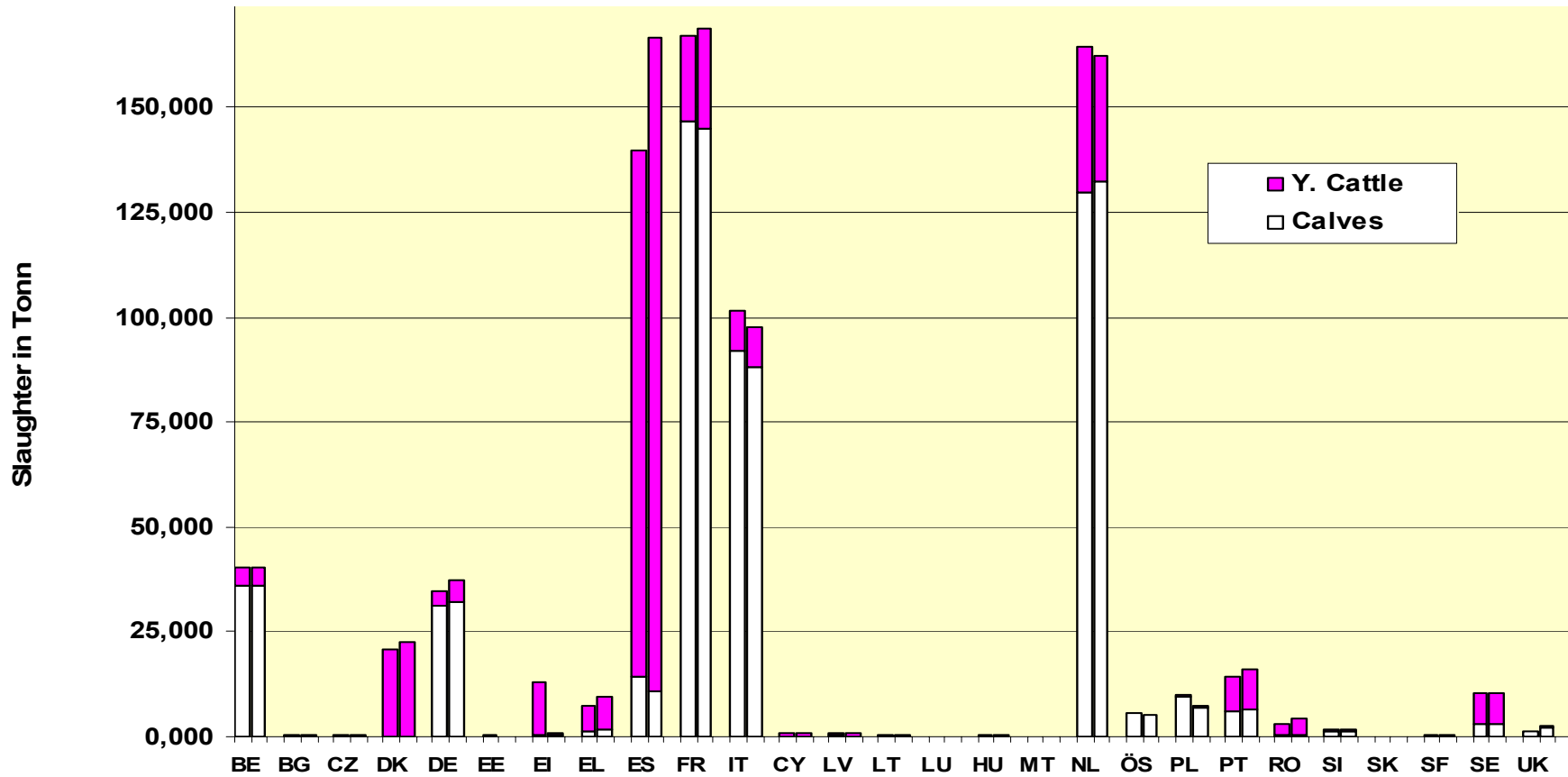
European Commission
Agriculture and Rural Development



Change in Veal Slaughter

(Calves & Young Cattle)

Period: Jan - September Year: 2010 & 2011



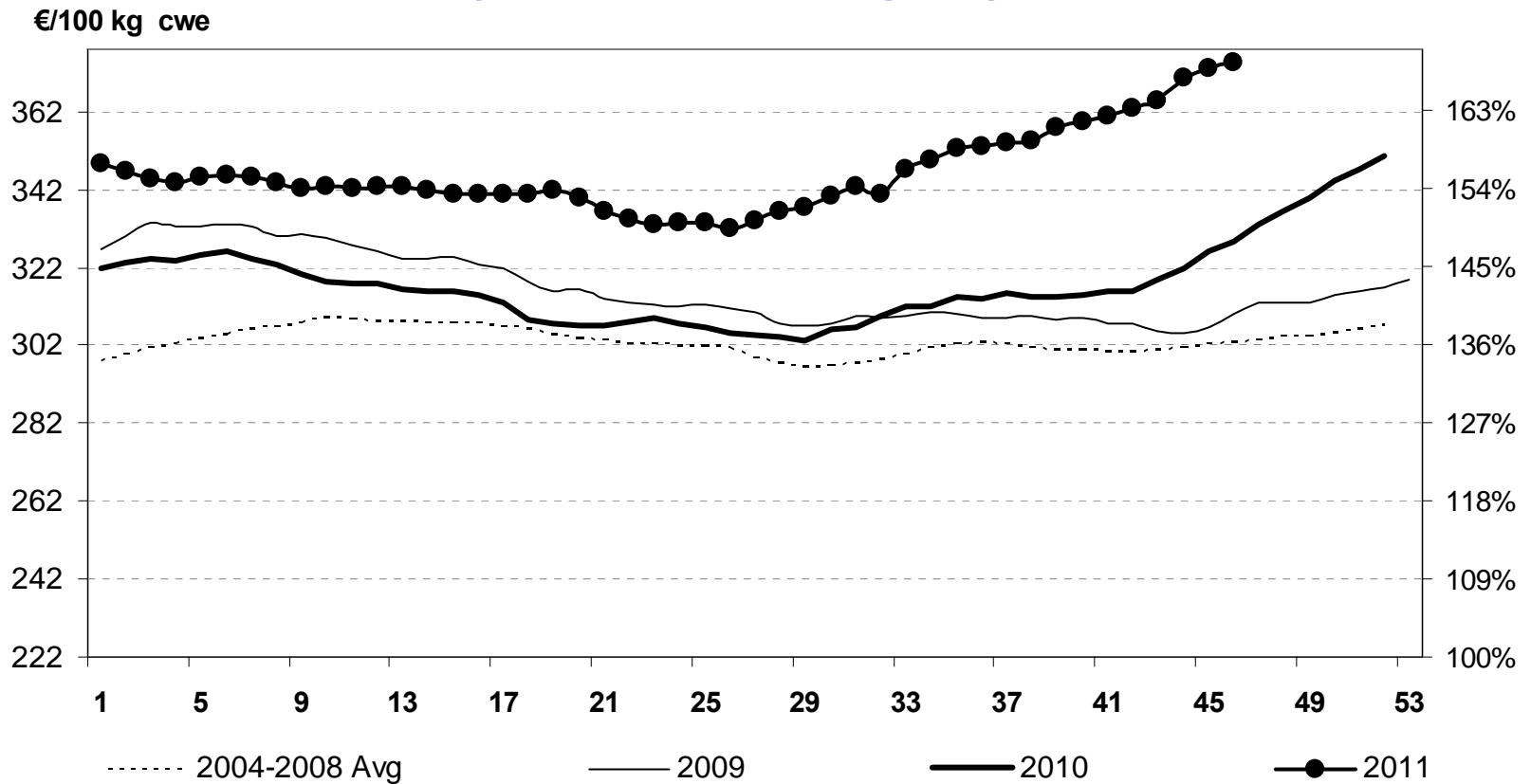


Evolution EU prices



European Commission
Agriculture and Rural Development

(A/C R3 – €/100 kg cw)



Price in week 46 : **374,77**
% change y/y : **+ 14,1%**
% Ref. Price in wk 46 : **168,5%**

Average price in octobre 2011 : **362,09**
% change y/y : **+ 14,5%**

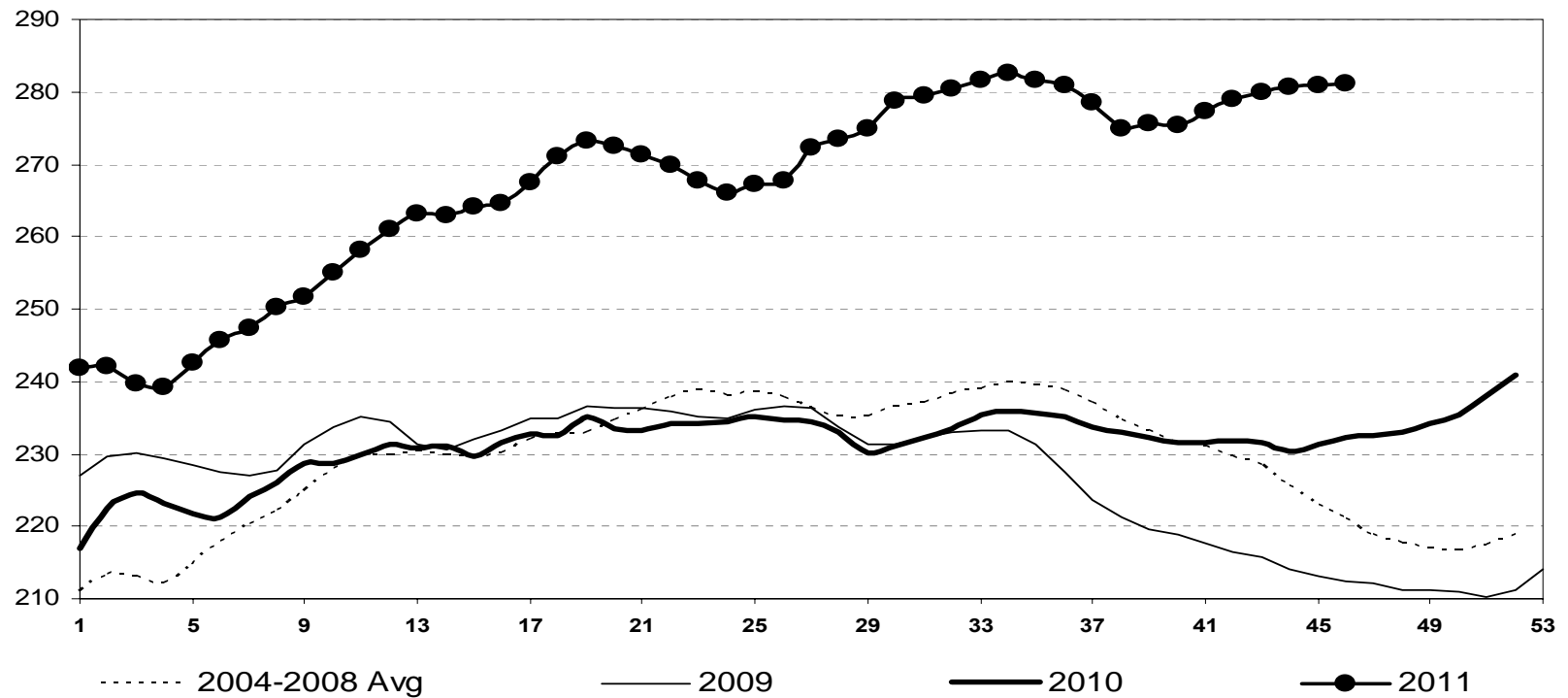


Evolution EU prices



European Commission
Agriculture and Rural Development

Cow carcasses (D O3 – €/100 kg cw)



Price in week 46 : **281,22**
% change y/y : **+ 21,1%**

Average price in octobre 2011 : **277,84**
% change y/y : **+ 19,9%**

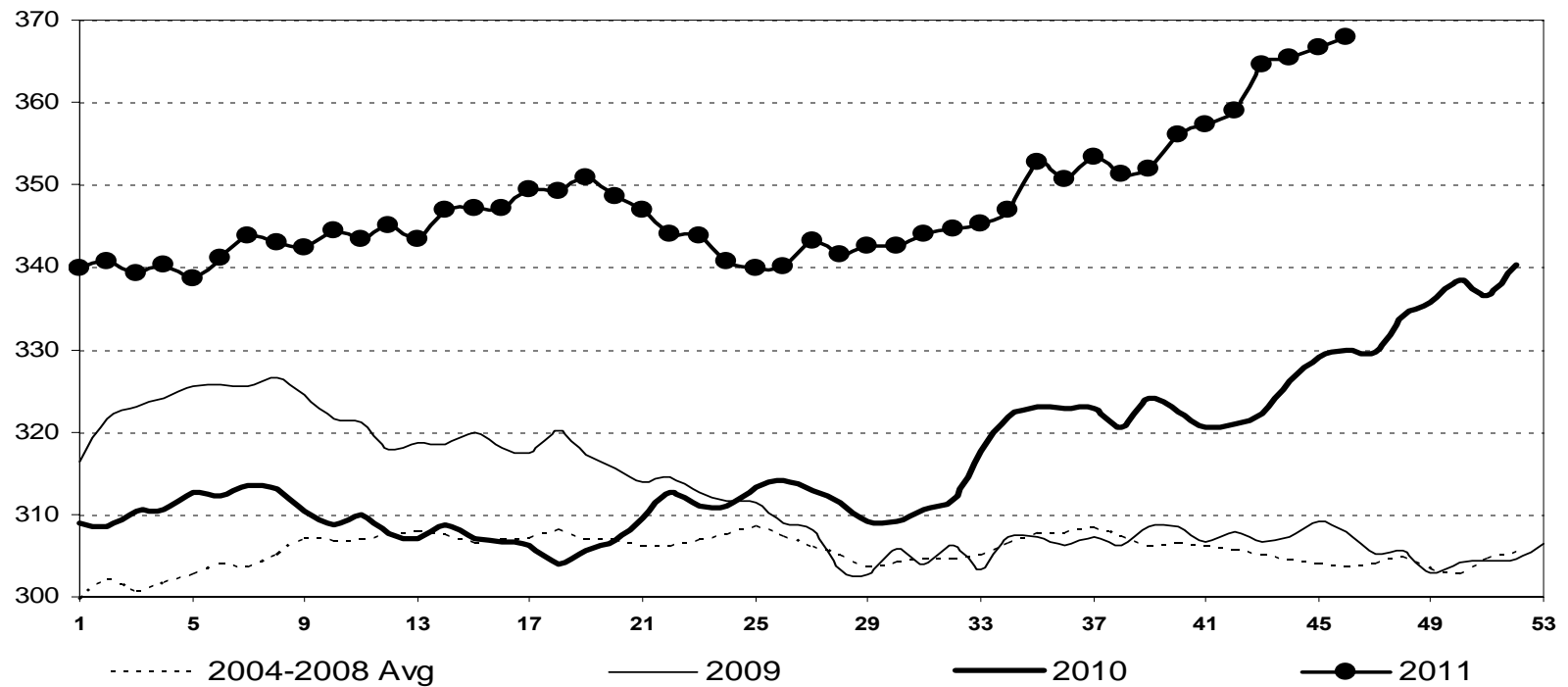


Evolution EU prices



European Commission
Agriculture and Rural Development

Heifer carcasses (E R3 – €/100 kg cw)



Price in week 46 : **367,97**
% change y/y : **+ 11,5%**

Average price in octobre 2011 : **359,02**
% change y/y : **+ 11,6%**



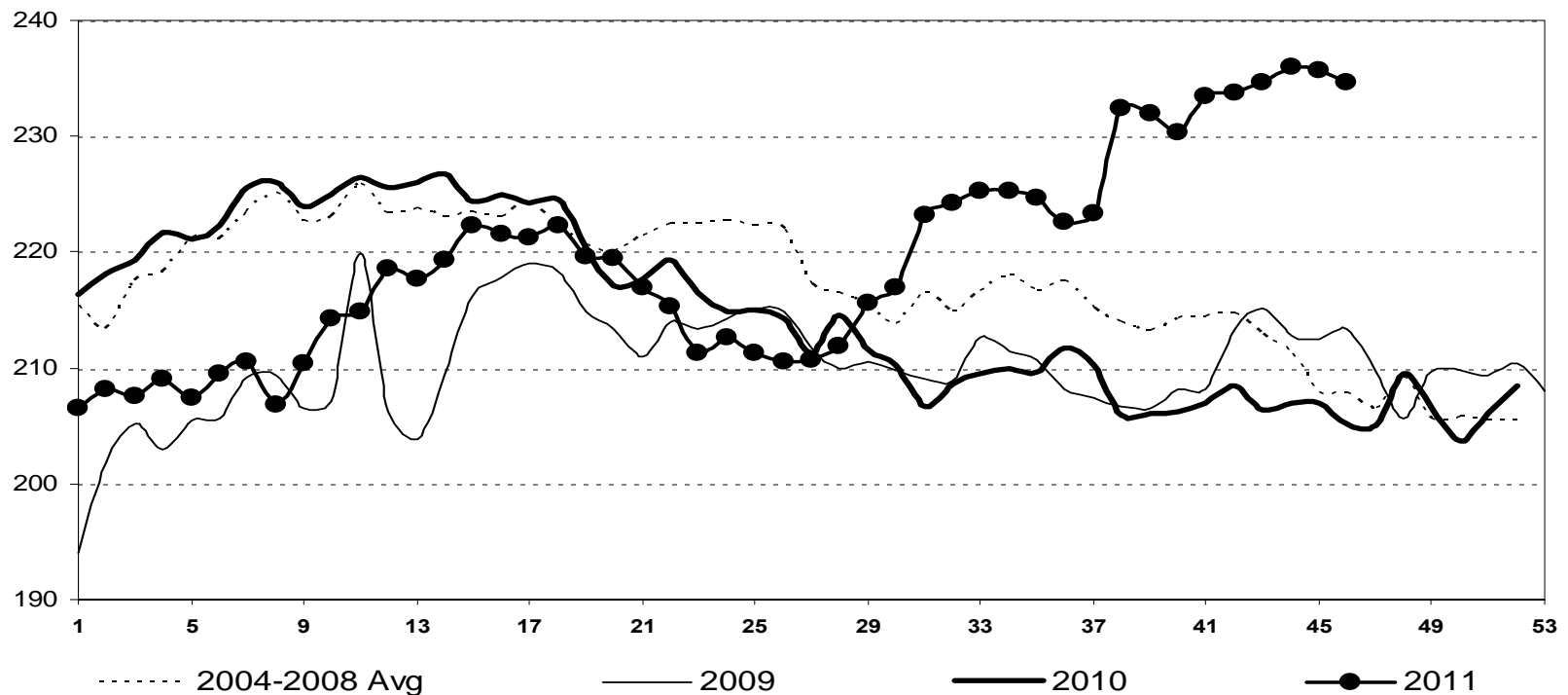
Evolution EU prices



European Commission
Agriculture and Rural Development

Live bovines (1)

Male store cattle (6-12 months; ≤ 300 kg – €/100 kg live weight)



Price in week 46 : **234,65**
% change y/y : **+ 14,4%**

Average price in octobre 2011 : **233,08**
% change y/y : **#####**



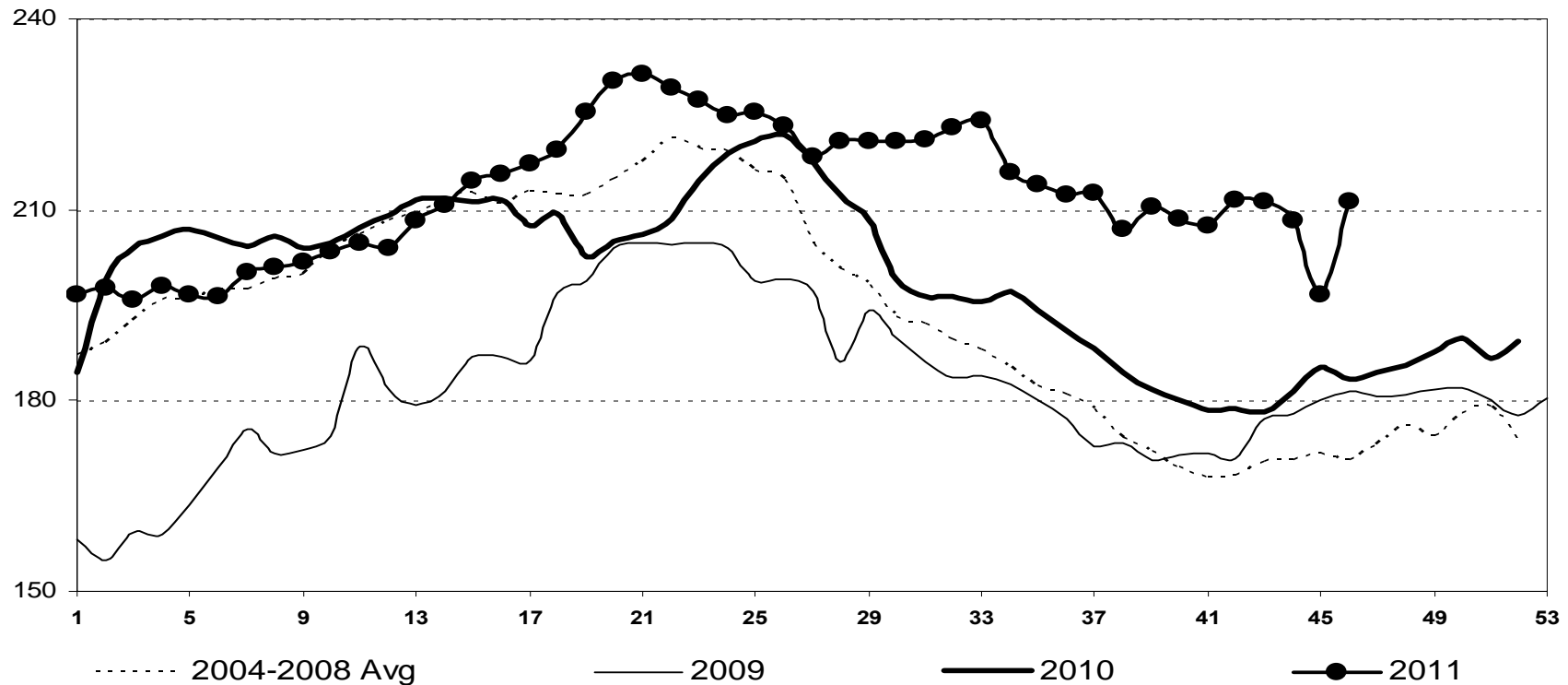
Evolution EU prices



European Commission
Agriculture and Rural Development

Live bovines (2)

Male calves aged between 8 days and 4 weeks (€/head)



Price in week 46 : **211,29**
% change y/y : **+ 15,3%**

Average price in octobre 2011 : **209,70**
% change y/y : **+ 17,1%**



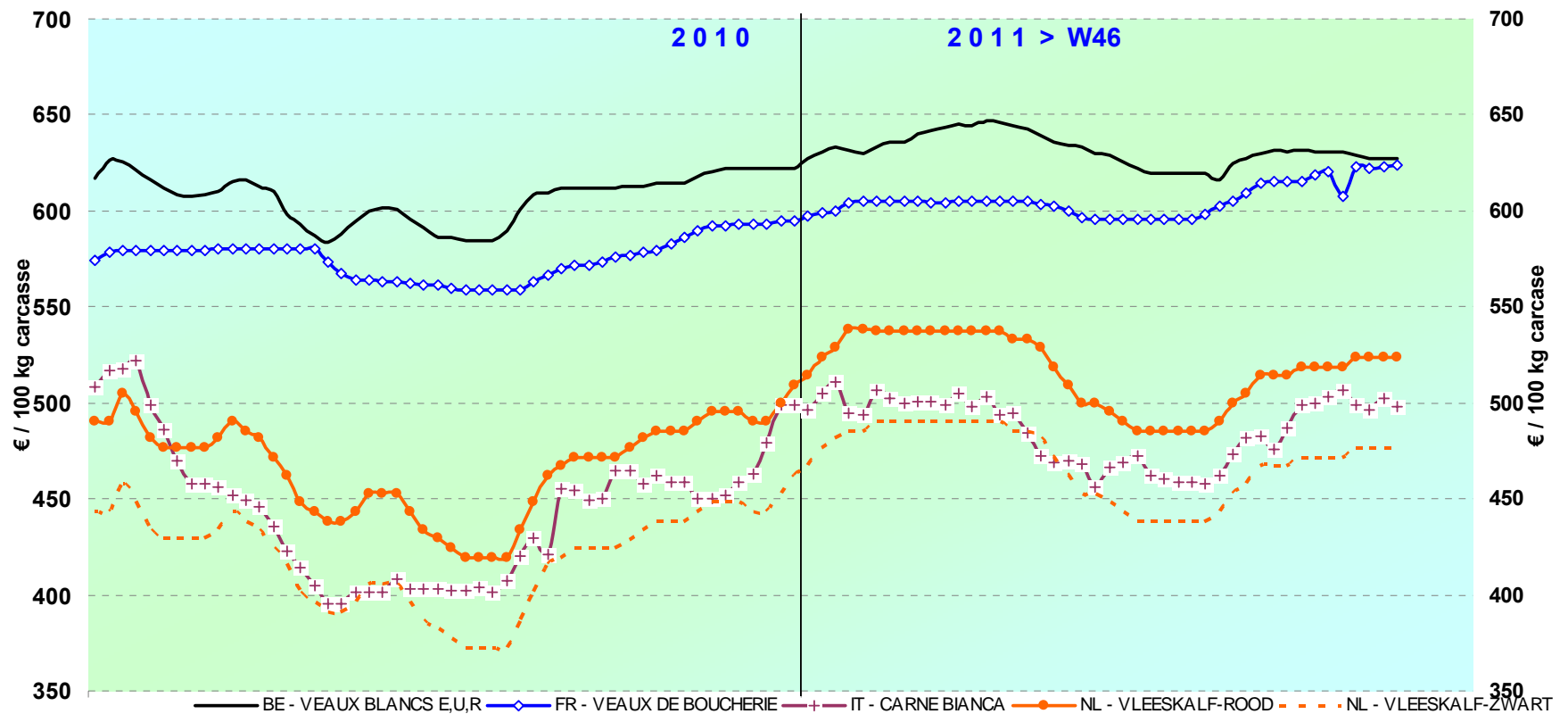
Evolution EU prices



European Commission
Agriculture and Rural Development

Live bovines (3a)

Butcher calves (€/100 kg cw)



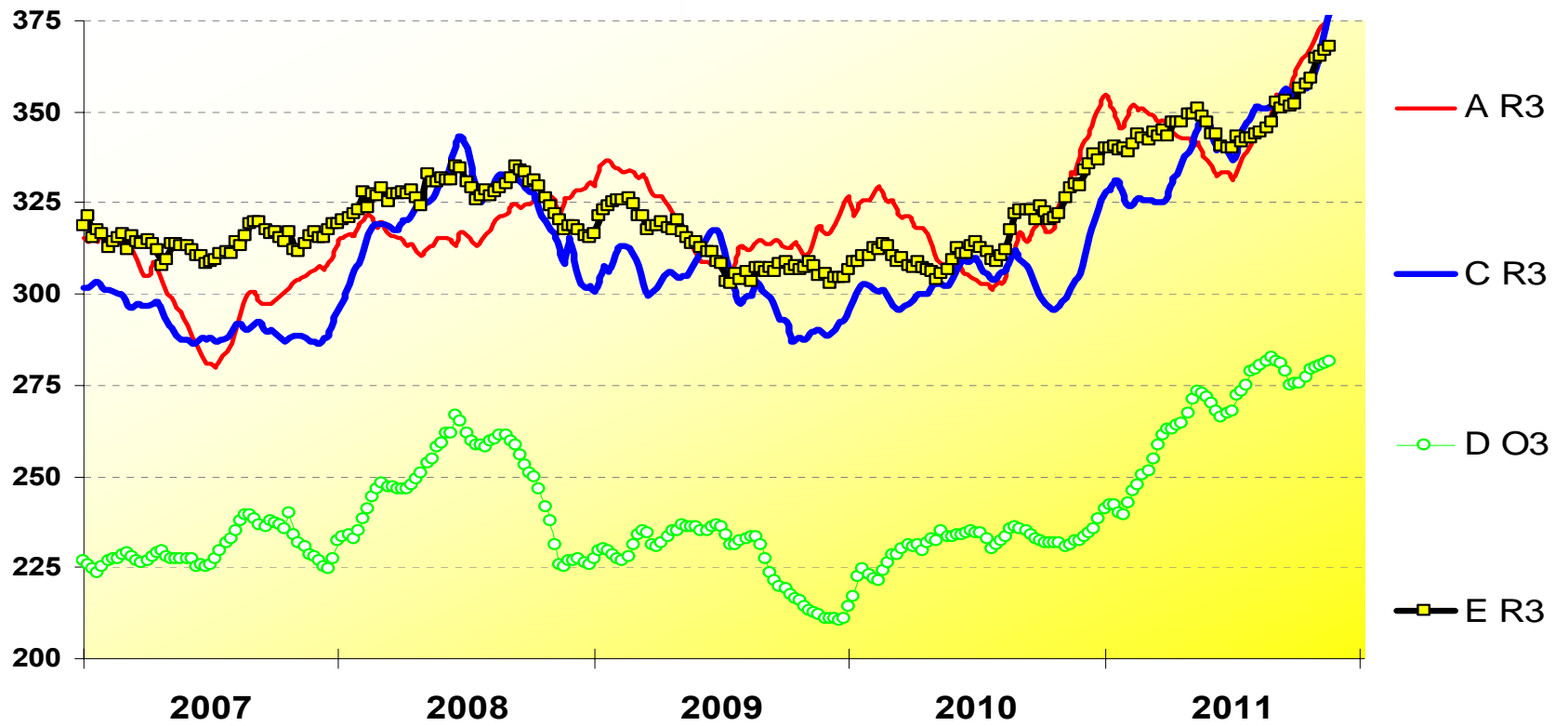


Evolution EU prices



European Commission
Agriculture and Rural Development

Categories Global View (€/100 kg cw)



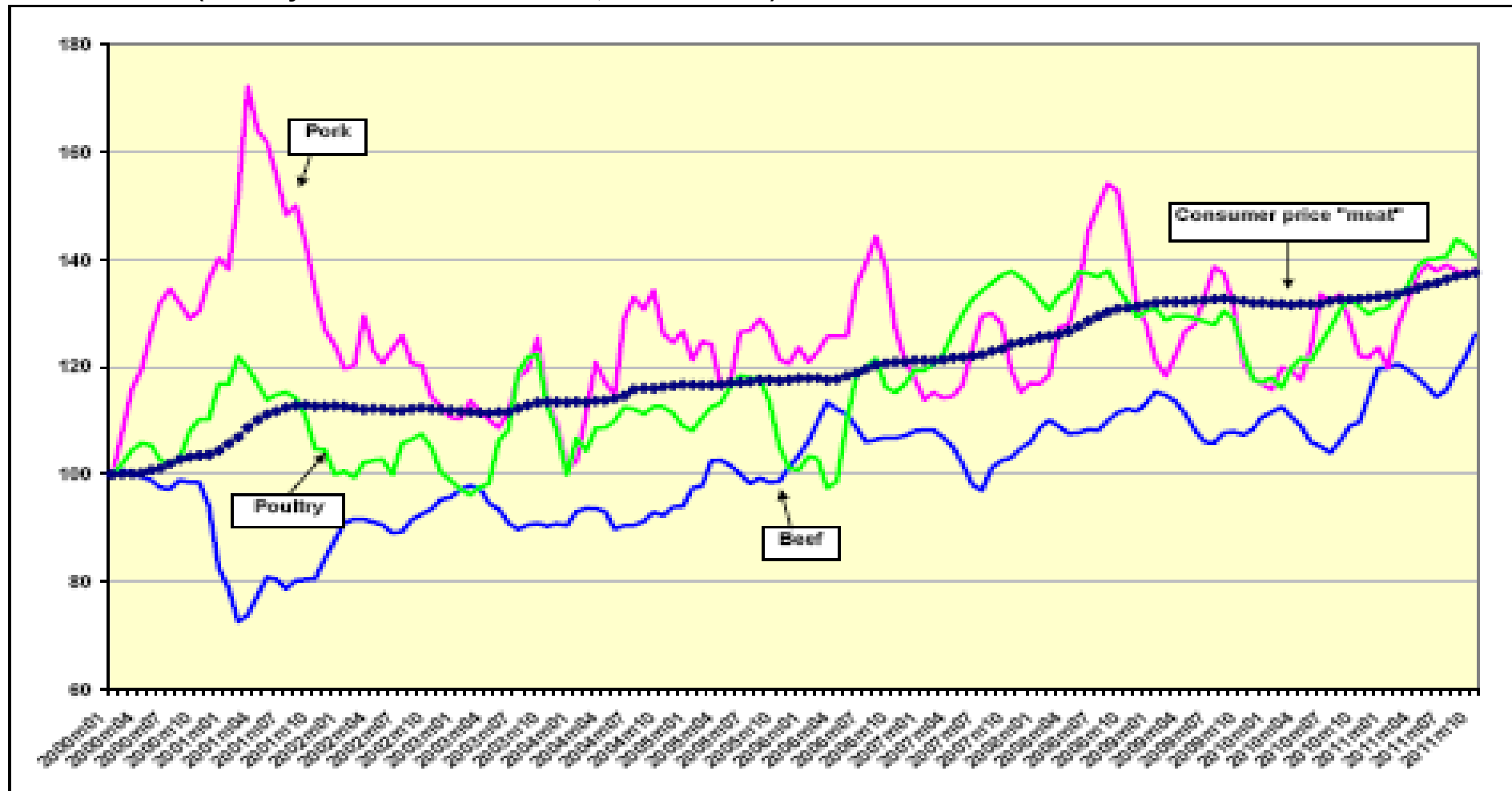


Evolution EU prices



European Commission
Agriculture and Rural Development

Meat: EU agricultural market and consumer price developments
(January 2000 until October 2011, Jan2000=100)



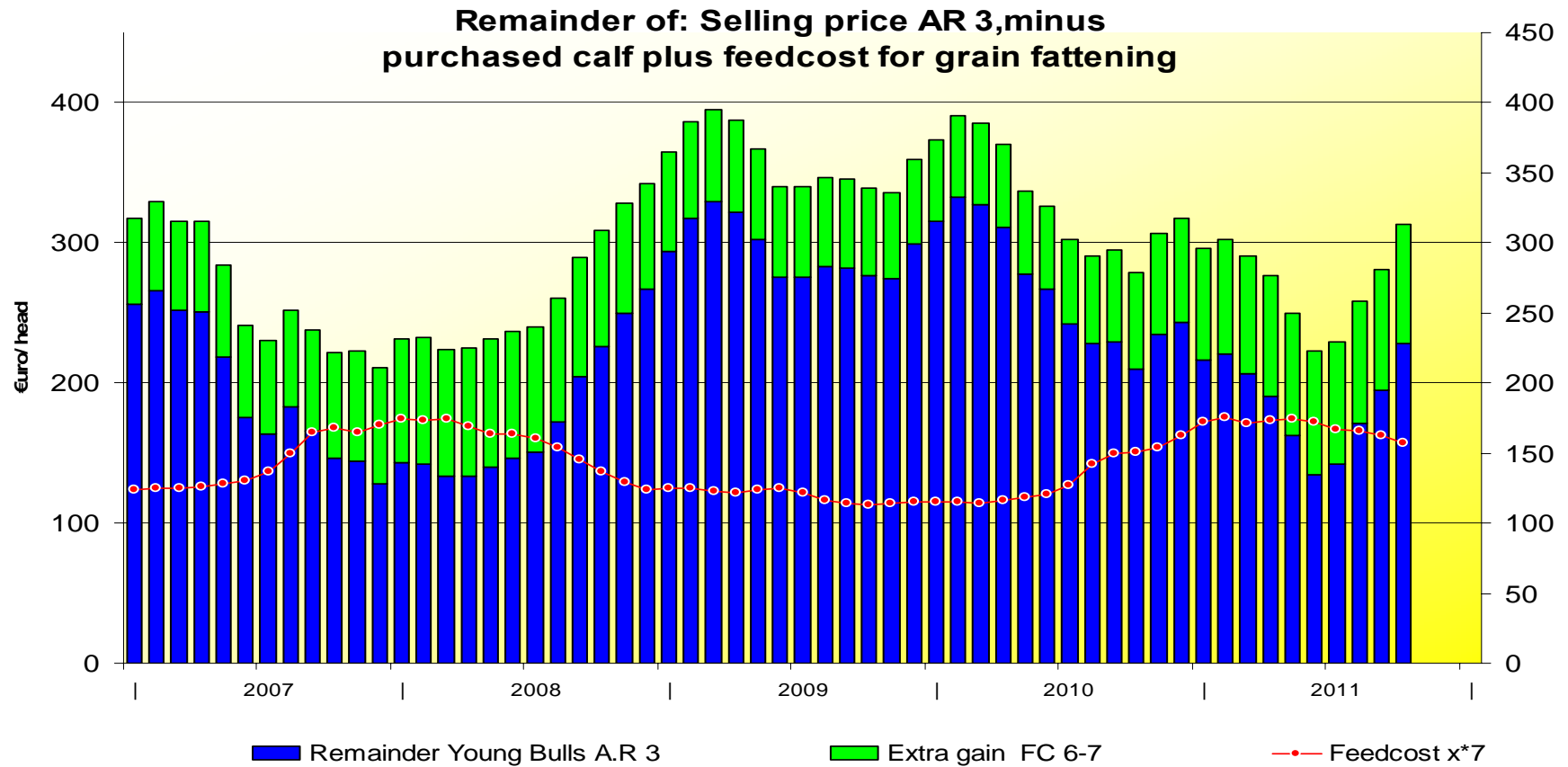
Source: AgriView, Eurostat



Evolution margin over animal + feed purchase costs



European Commission
Agriculture and Rural Development



Feed conversion rate: (FCR) 7 or 6 kg feed = 1kg live weight.

Feed ration: 40% compound feed (energy + proteine), 15% barley, 15% maize, 20% wheat, 10% straw

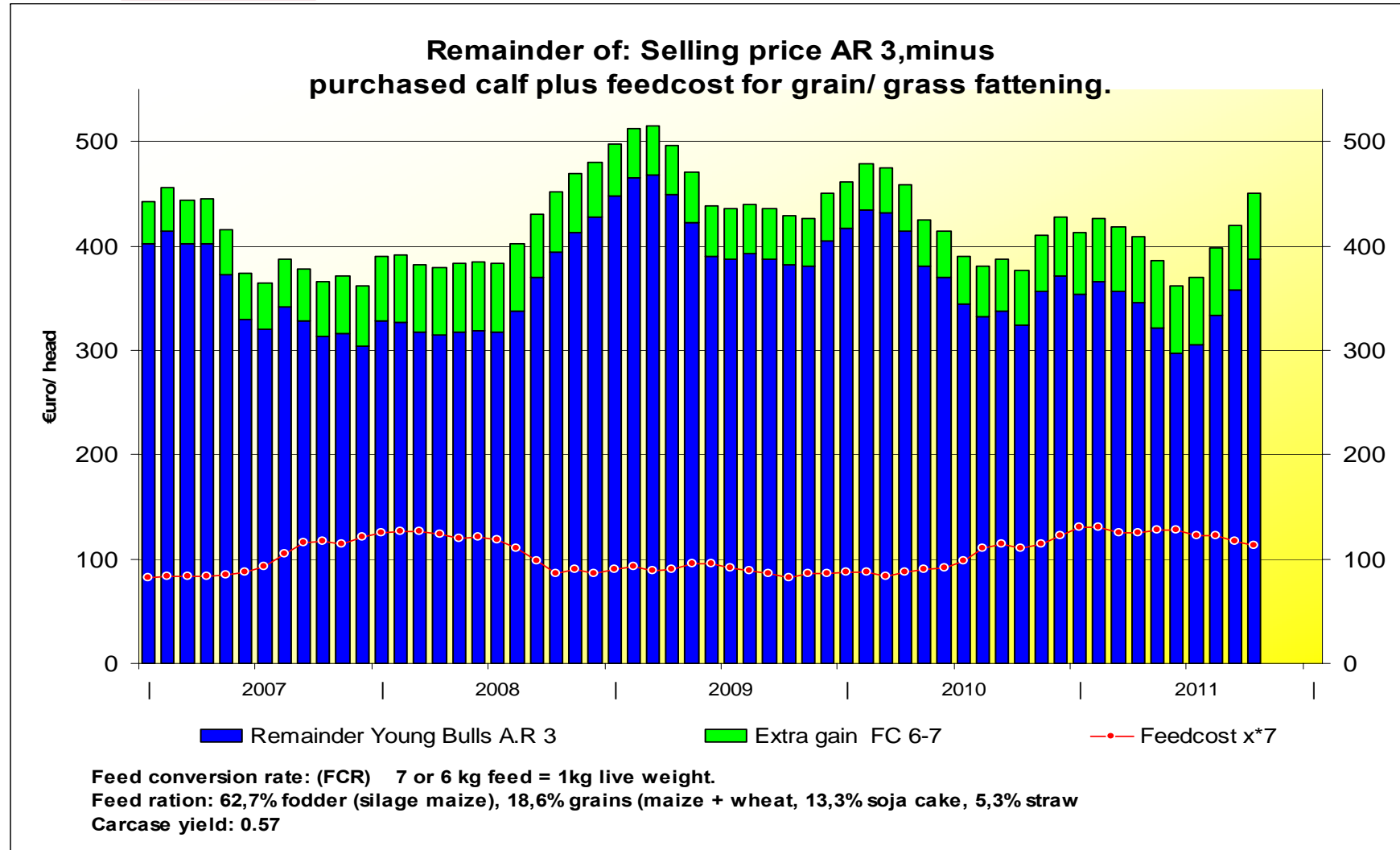
Carcase yield: 0.57



Evolution margin over animal + feed purchase costs



European Commission
Agriculture and Rural Development



Cost development



European Commission
Agriculture and Rural Development

Cost developments for selected EU-farms 2005-2010

€ per 100 kg carcass weight sold



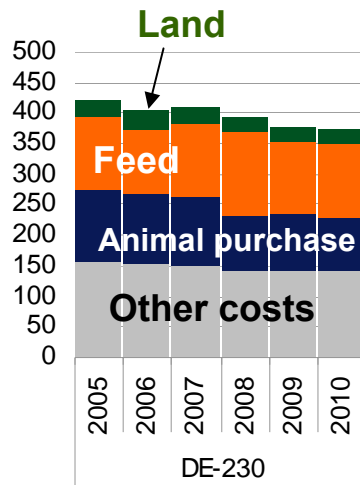
Germany

Bavaria

Fleckvieh

230 bulls
from calves

Corn silage, grains



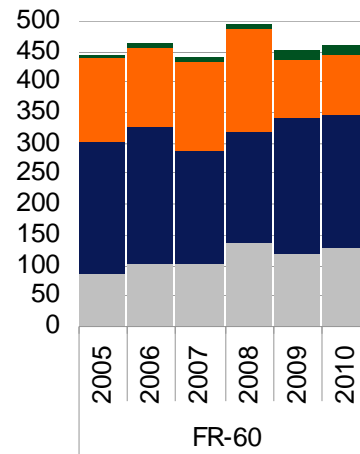
France

Pay de la Loire

Charolais

60 bulls and heifers
from weaners

Silage, hay, grains



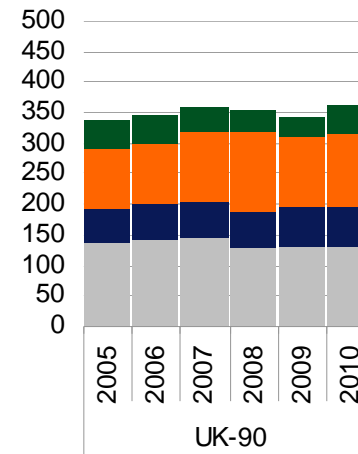
England

Somerset

Holstein x, Simmental

90 bulls and heifers
from weaners

Silages, concentrates



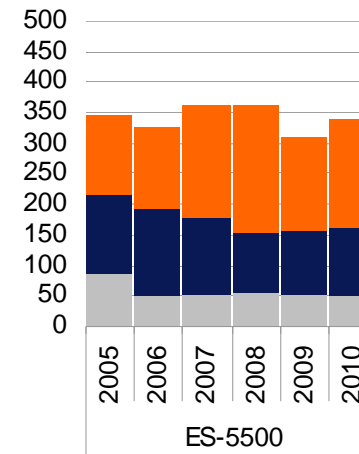
Spain

Aragon

Crosses

5500 bulls
from calves

Straw, grains,
concentrates



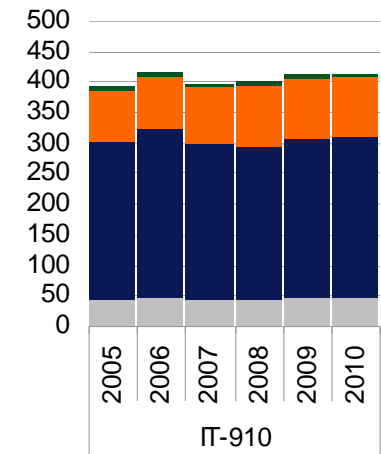
Italy

Veneto

Charolais

910 bulls
from weaners

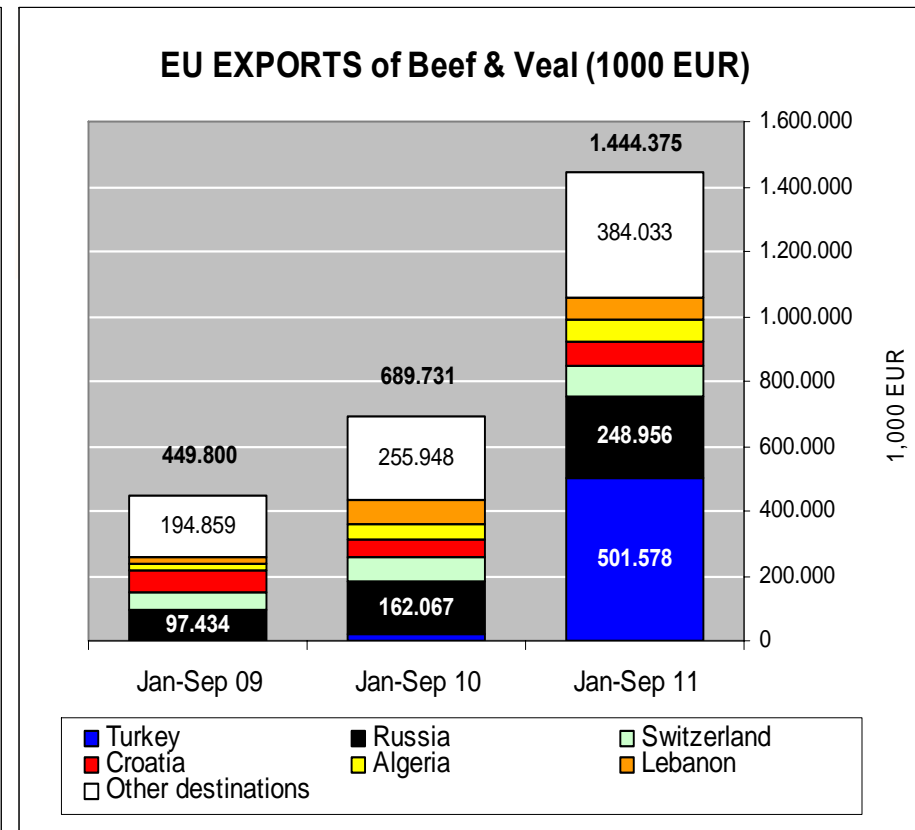
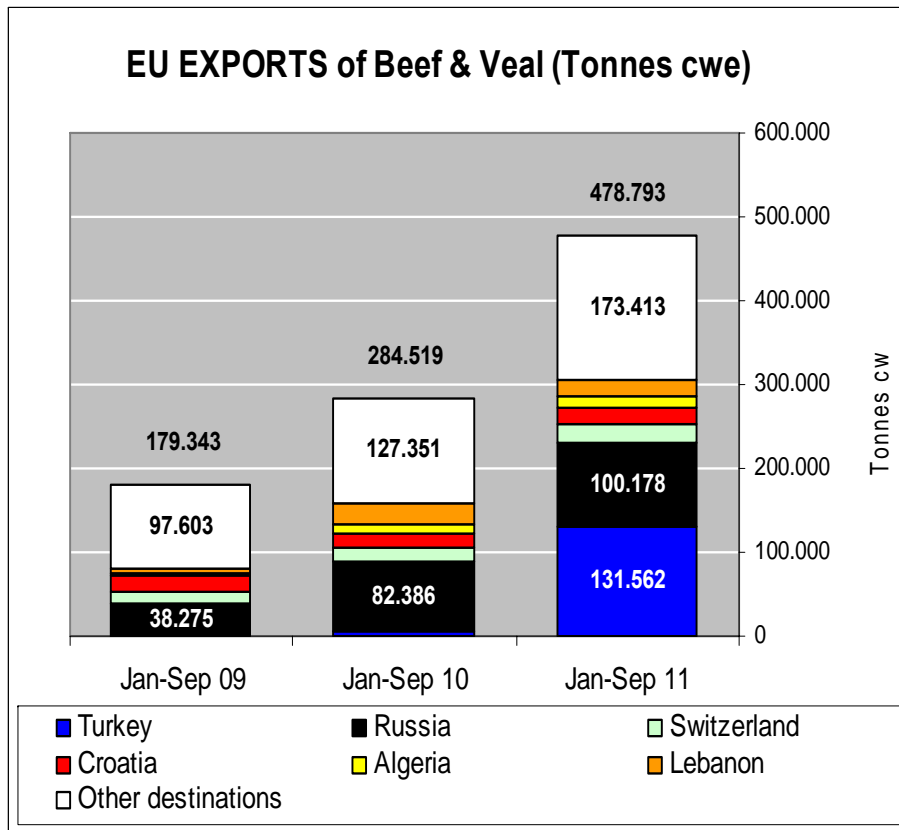
Corn silage, grains



EU beef trade



EU exports of beef and live animals: Trade figures (COMEXT)

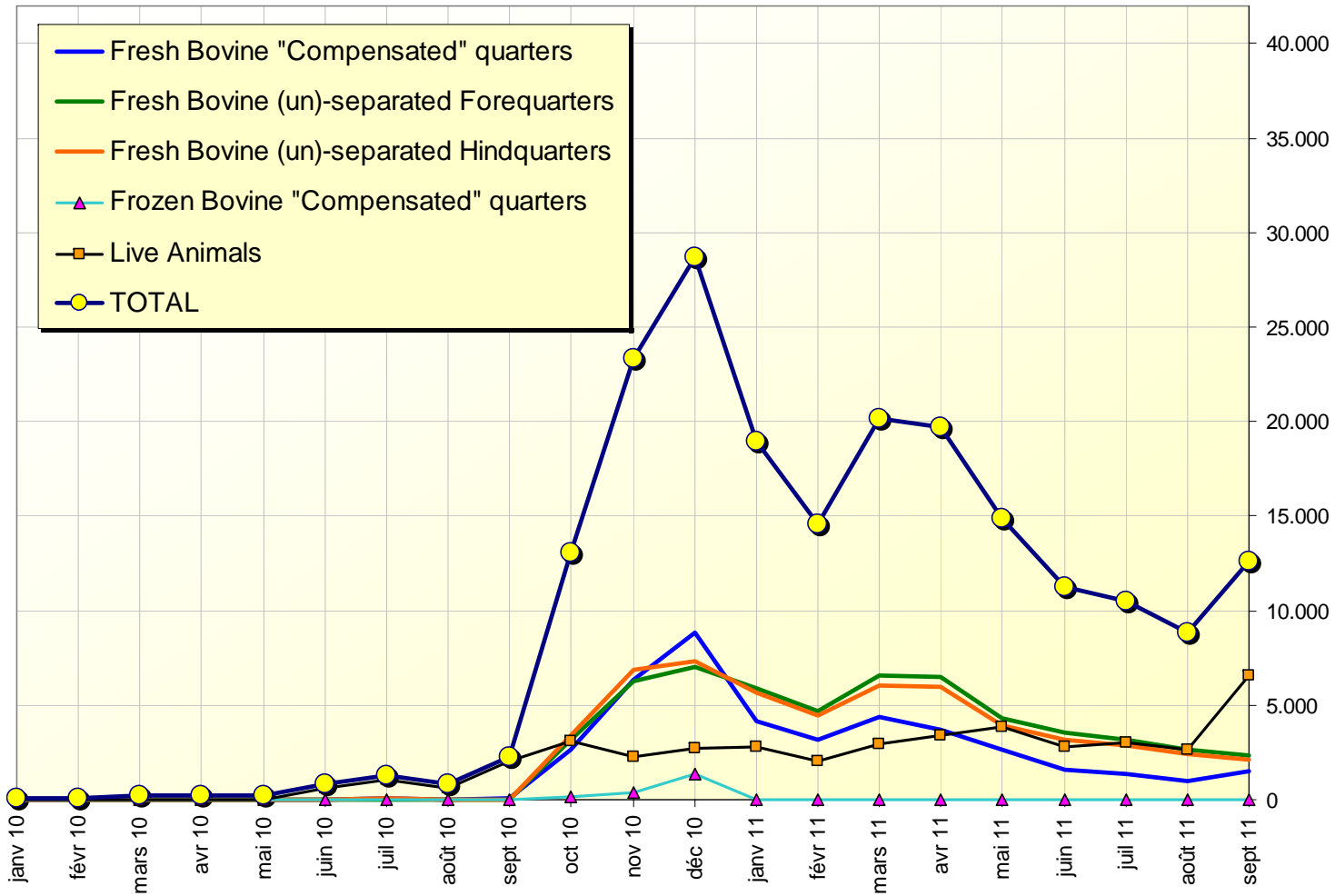




EU beef trade



EU beef Exports to TURKEY Trade figures (COMEXT data) *tonnes cwe*

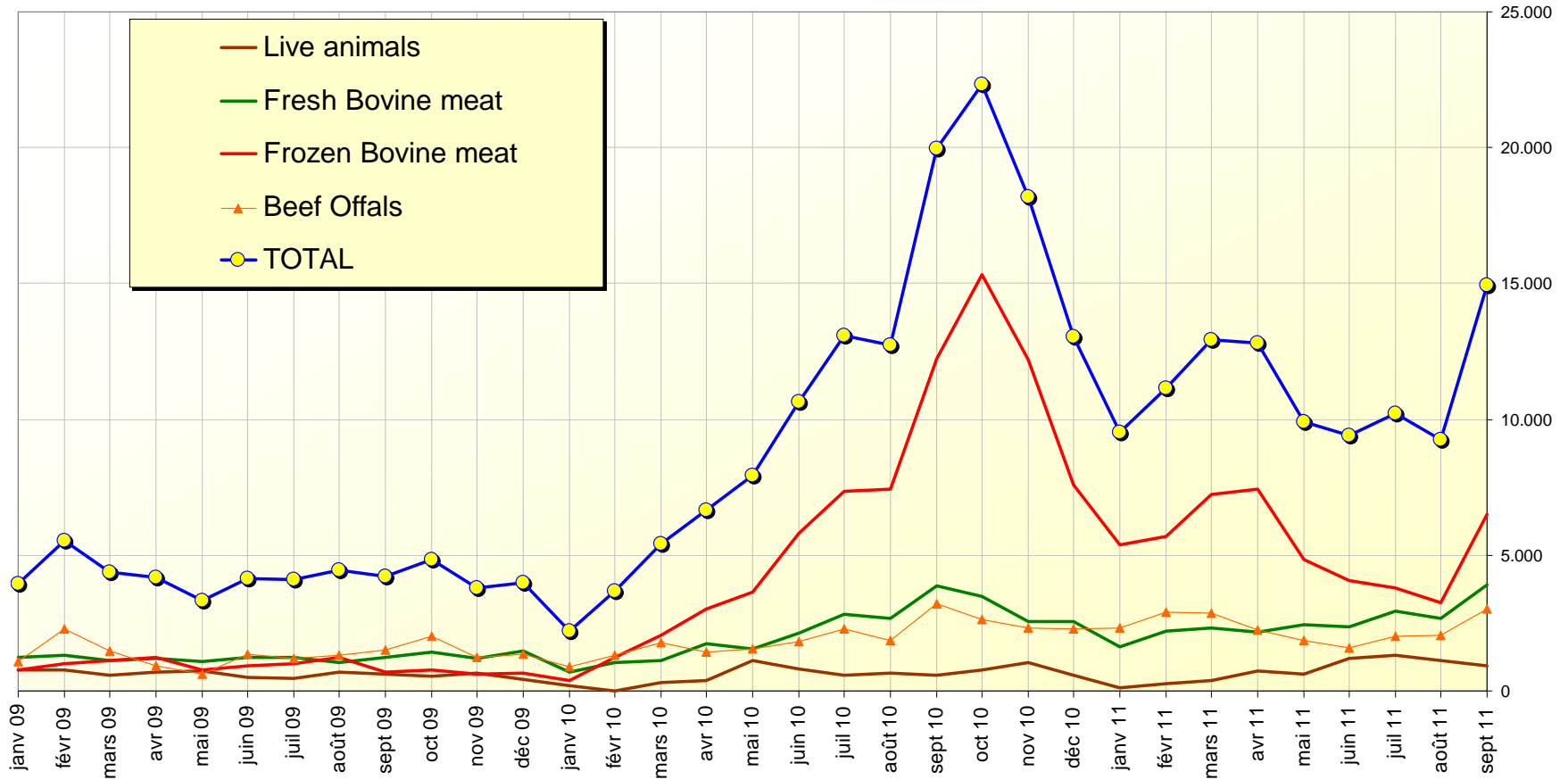


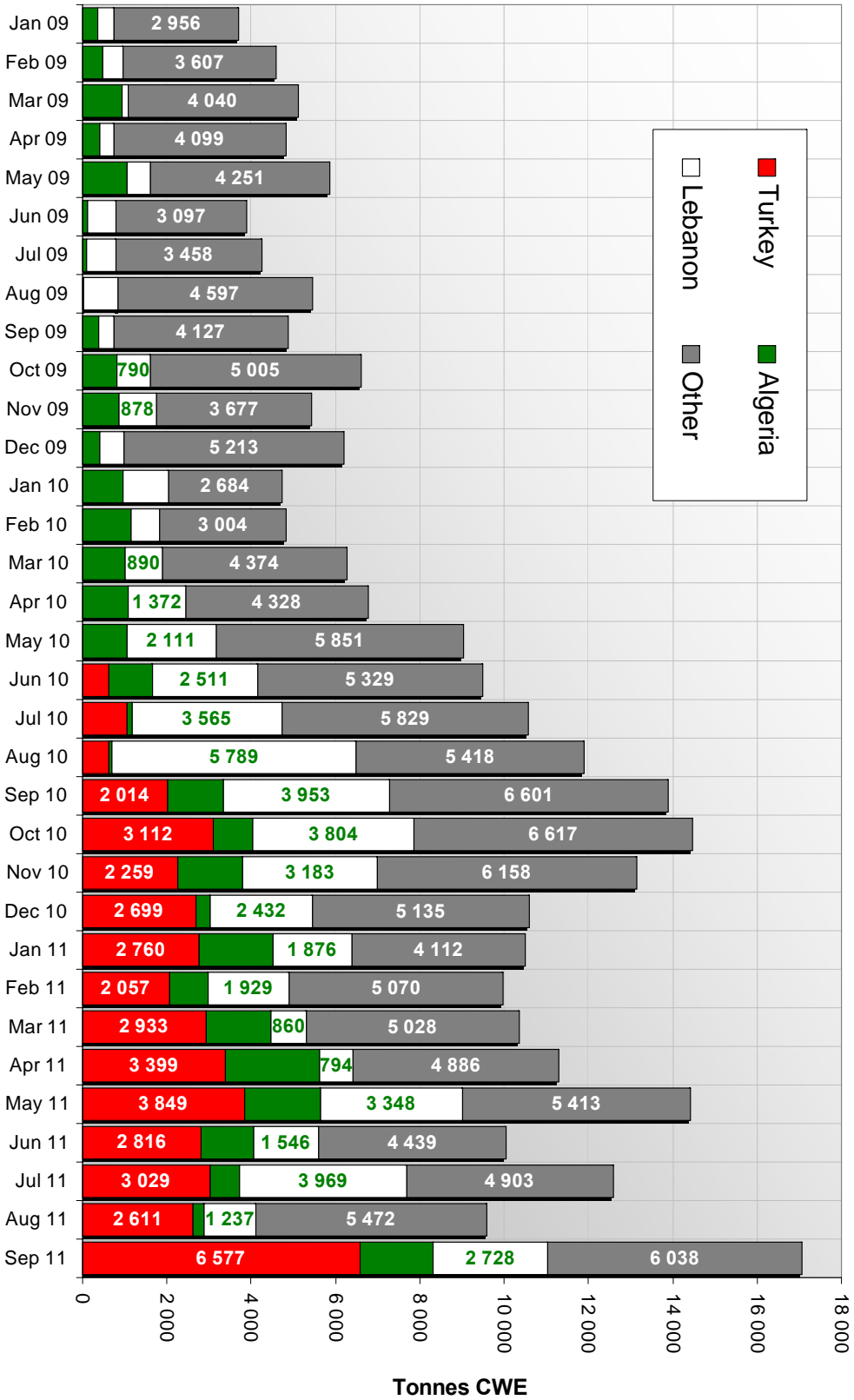


EU beef trade



EU beef Exports to RUSSIA Trade figures (COMEXT data) tonnes cwe





EU Exports of LIVE Bovine Animals
 (Source COMEXT - Tonnes cwe)

EU beef trade

European Commission
 Agriculture and Rural Development





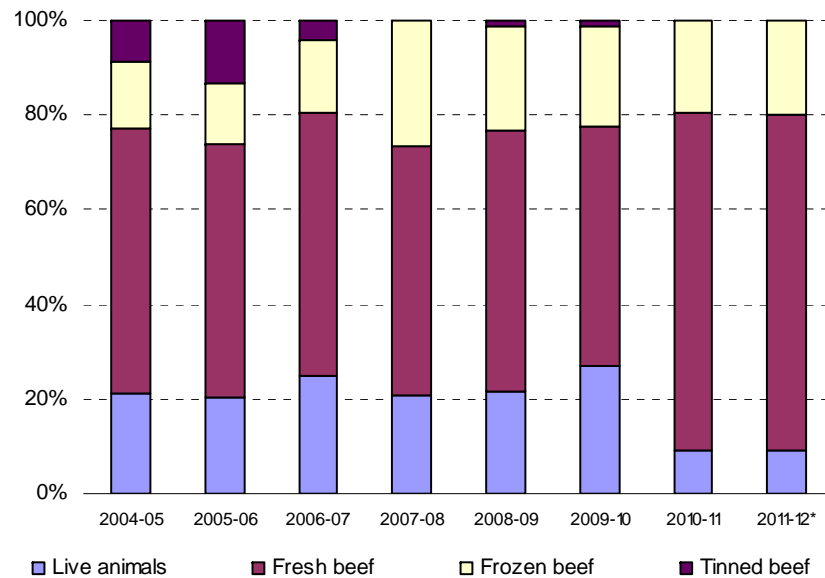
EU beef trade



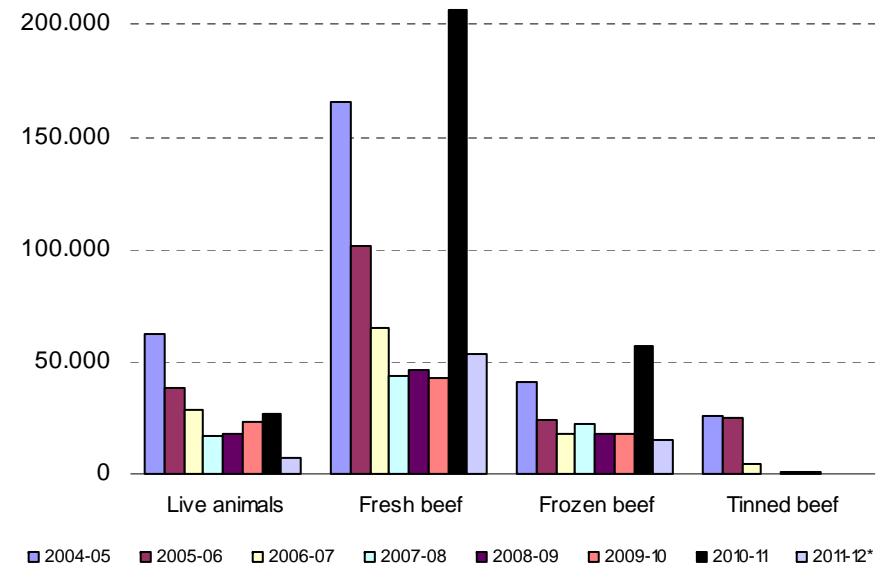
EU exports of beef and live animals: Licence applications for exports with refunds (tonnes cwe)

GATT 2011 - 12	Live	Fresh	Frozen	Tinned	Total
Jul 10 - Oct 10	8.842	44.657	24.449		77.948
Jul 11 - Oct 11	6.919	53.103	14.876		74.899
% share	9,2%	70,9%	19,9%		100,0%
% chg /prev.per	-21,7%	+18,9%	-39,2%		-3,9%

EVOLUTION IN EXPORT STRUCTURE (% share - GATT years)



EVOLUTION PER CATEGORY (tonnes cwe - GATT years)

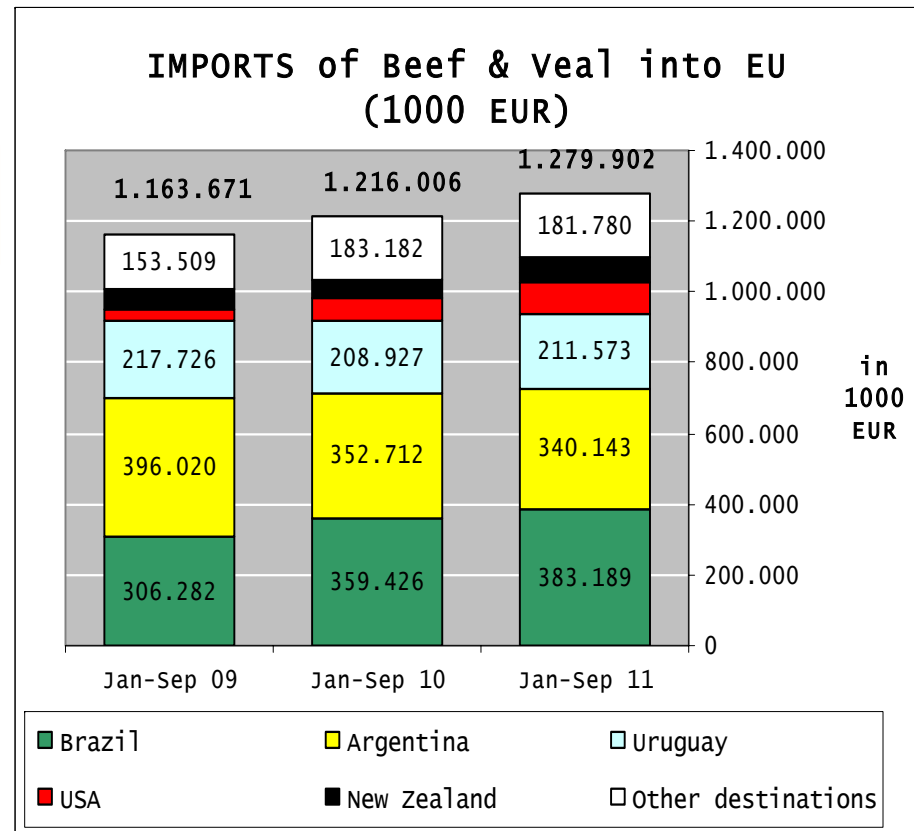
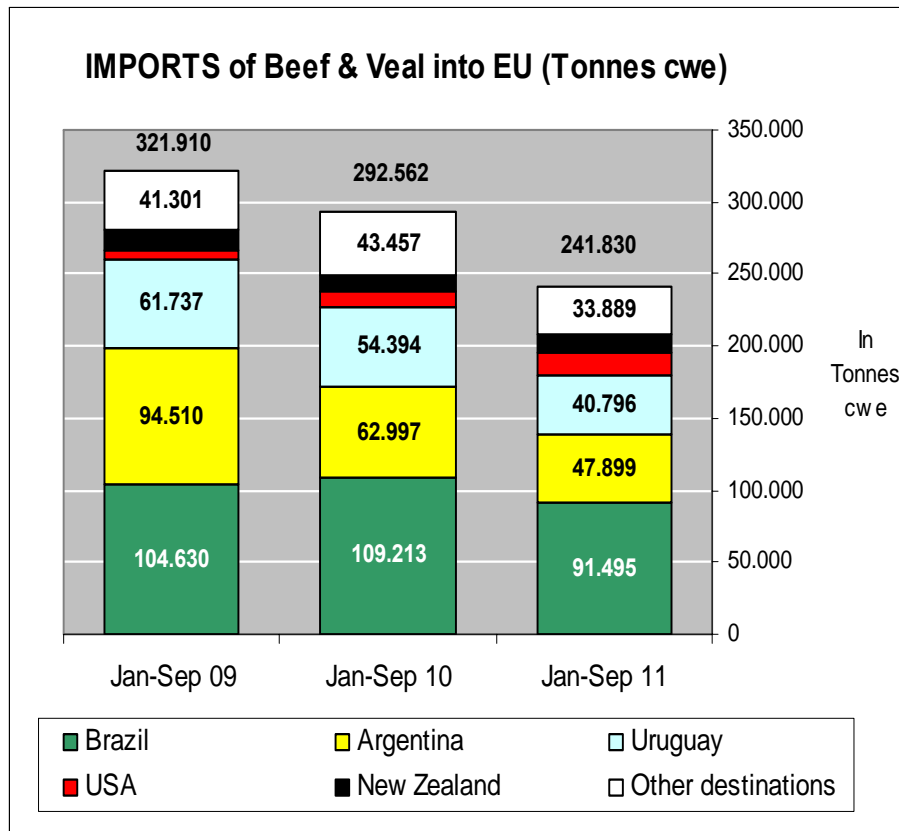




EU beef trade



EU imports of beef and live animals (2): Trade figures (COMEXT)

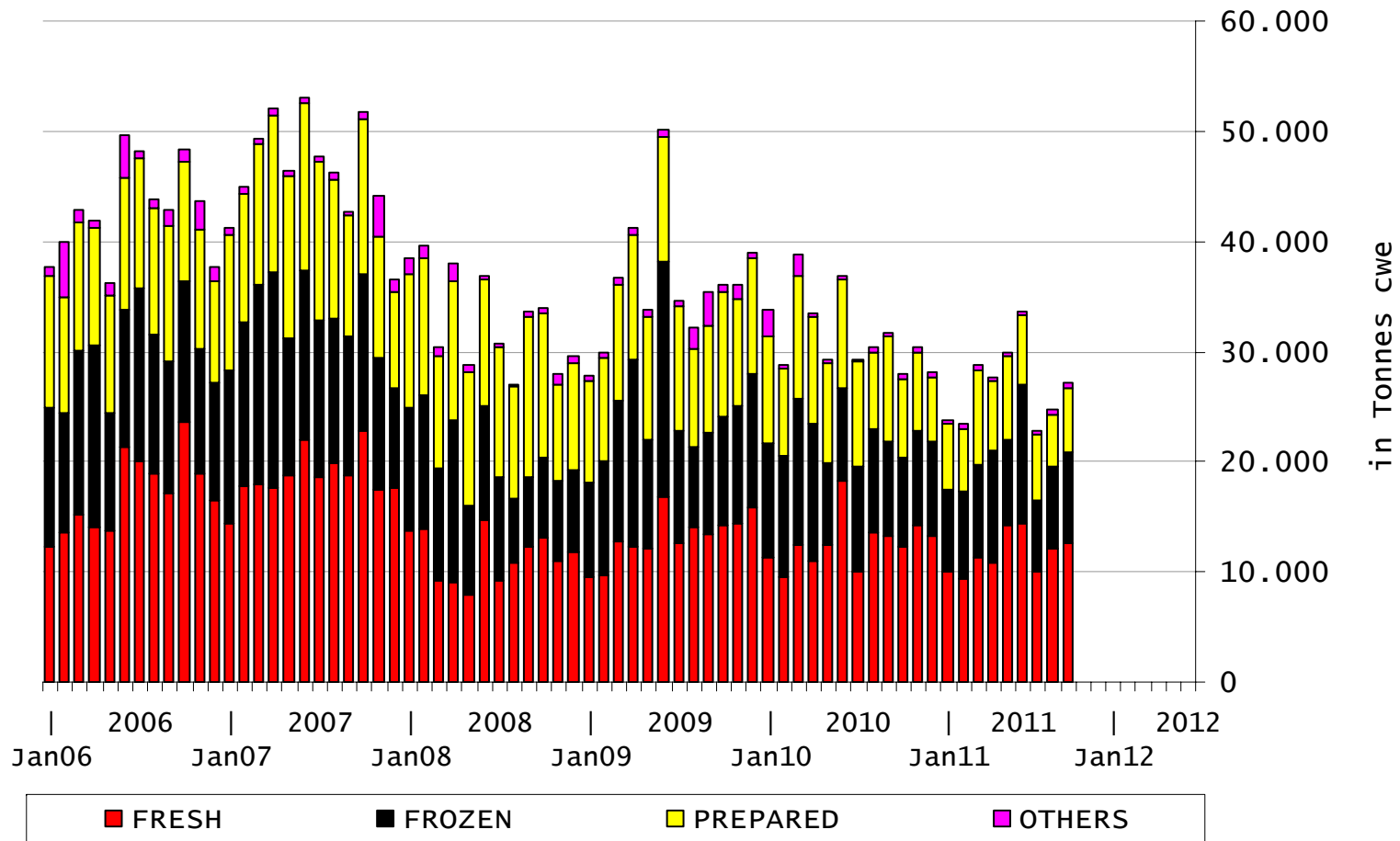




EU beef trade



Imports of BEEF products

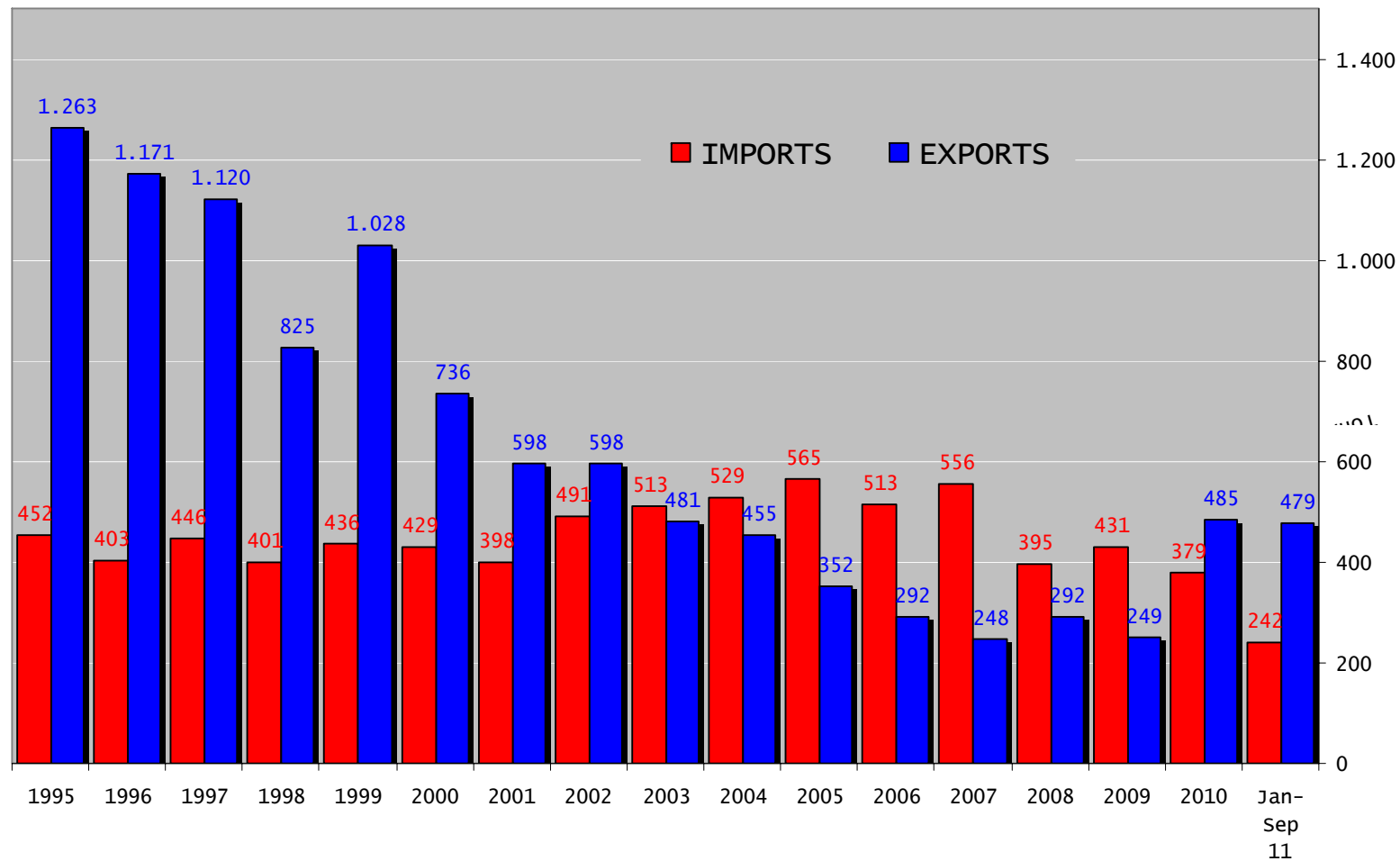




EU beef trade



Trade balance on beef and live animals



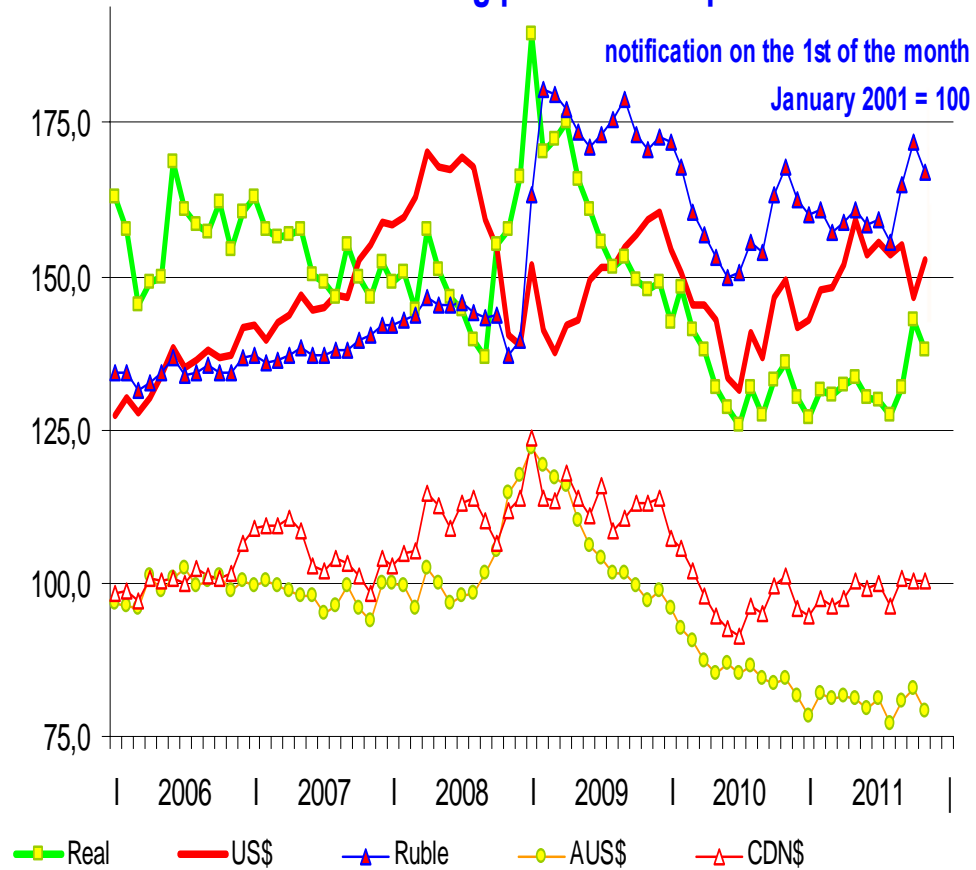


World beef market



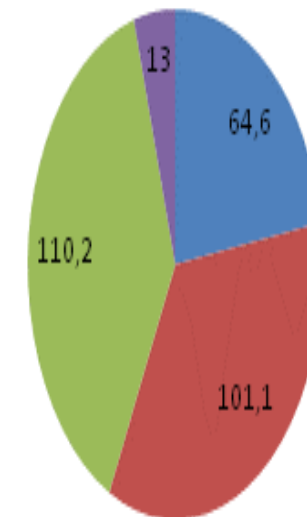
European Commission
Agriculture and Rural Development

Index of monthly exchange rates of the main trading partners compared to the Euro



Meat production in 2011 (FAO) - Million tons

■ Beef ■ Poultry ■ Pork ■ Ovine



World beef market

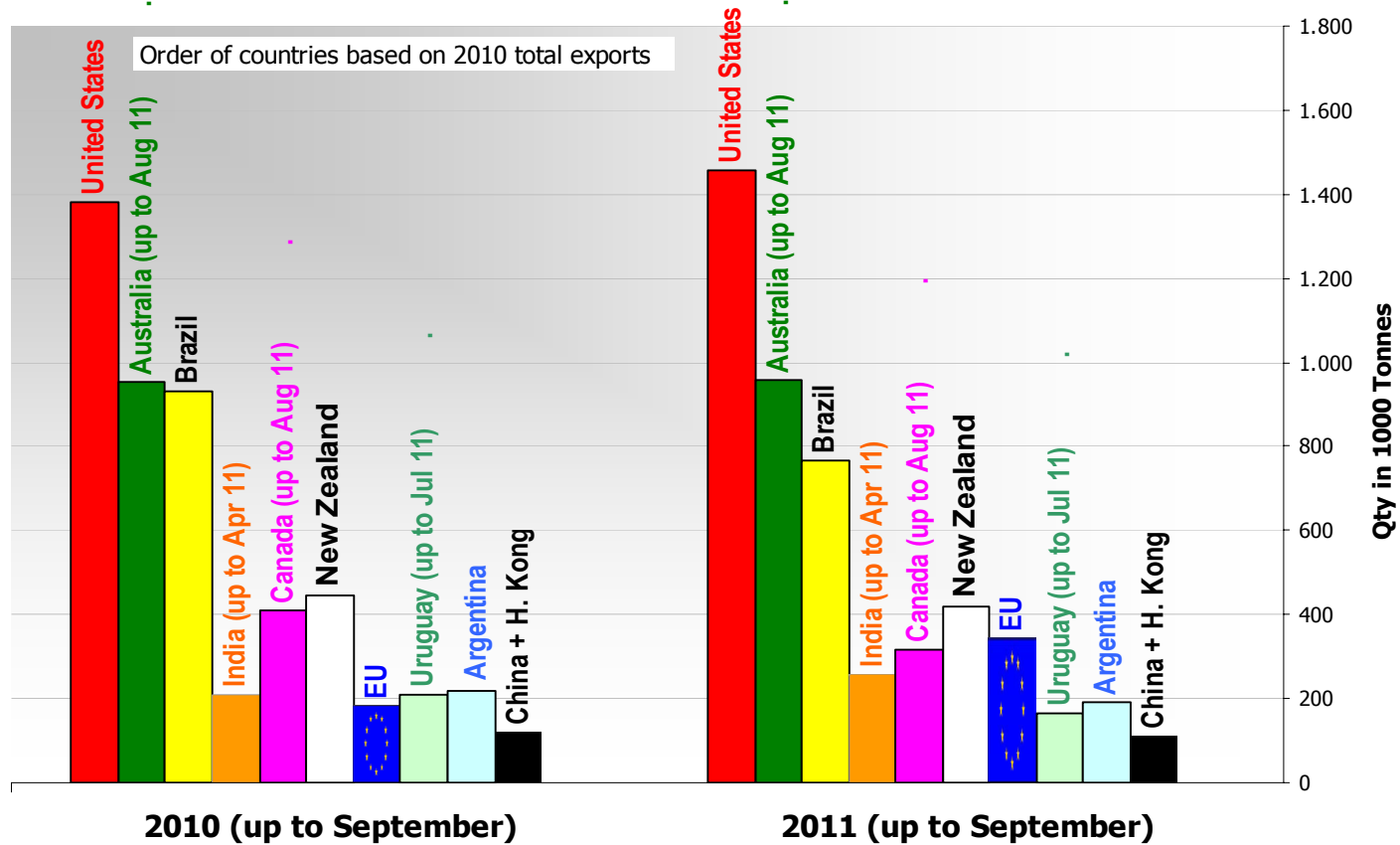


European Commission
Agriculture and Rural Development

Source : GTA

* Excluding live animals (0102), fats, preparations of several types of meat (0209, 0210 99 and 1602 90)

Main Exporters of BEEF Products (up to September)



Only Jan-Mar 2011 available for India (661 900 T in 2010 - 4th main exporter)

World beef market



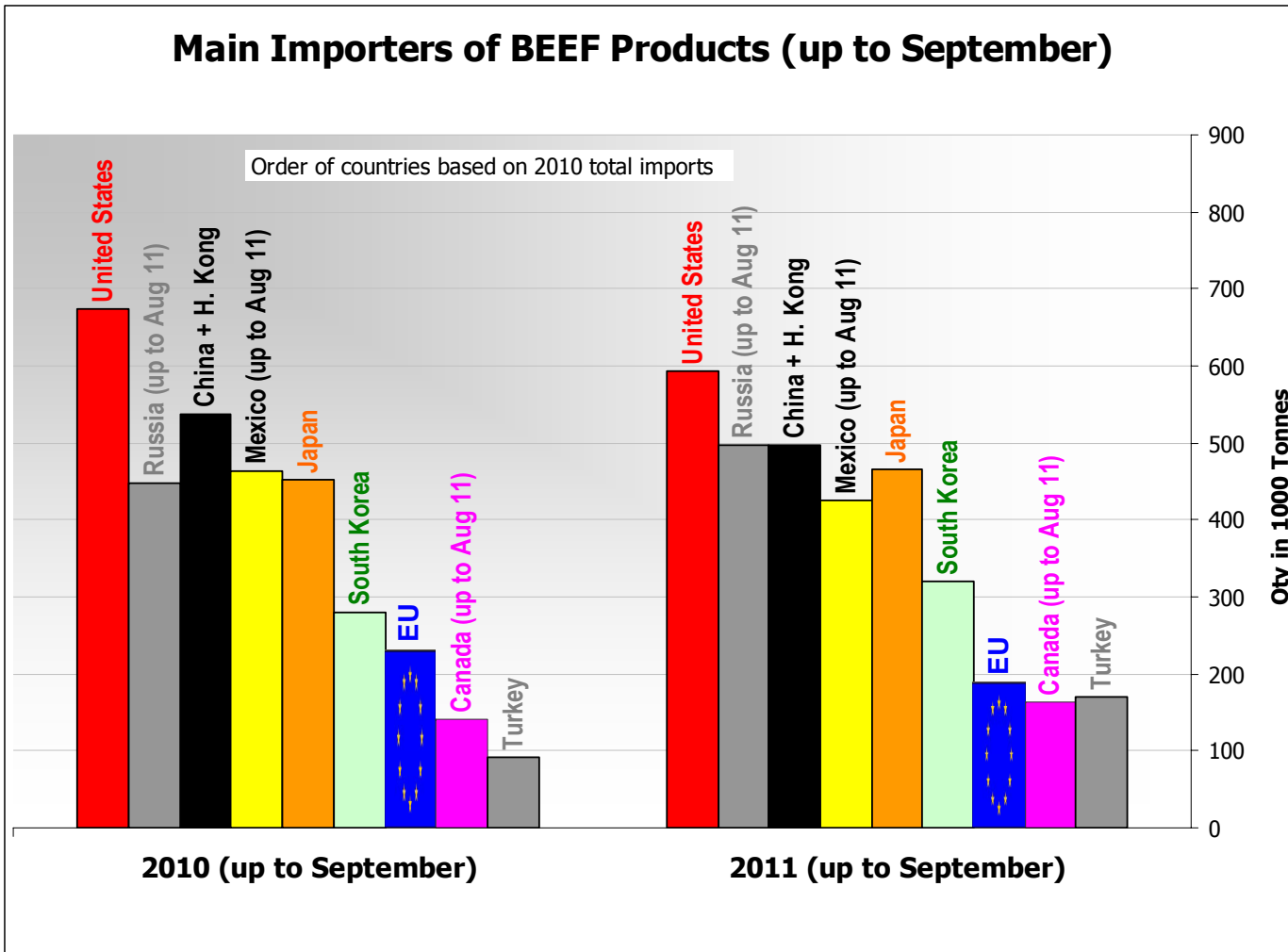
European Commission
Agriculture and Rural Development



Source : GTA

* Excluding live animals (0102), fats, preparations of several types of meat (0209, 0210 99 and 1602 90)

Main Importers of BEEF Products (up to September)



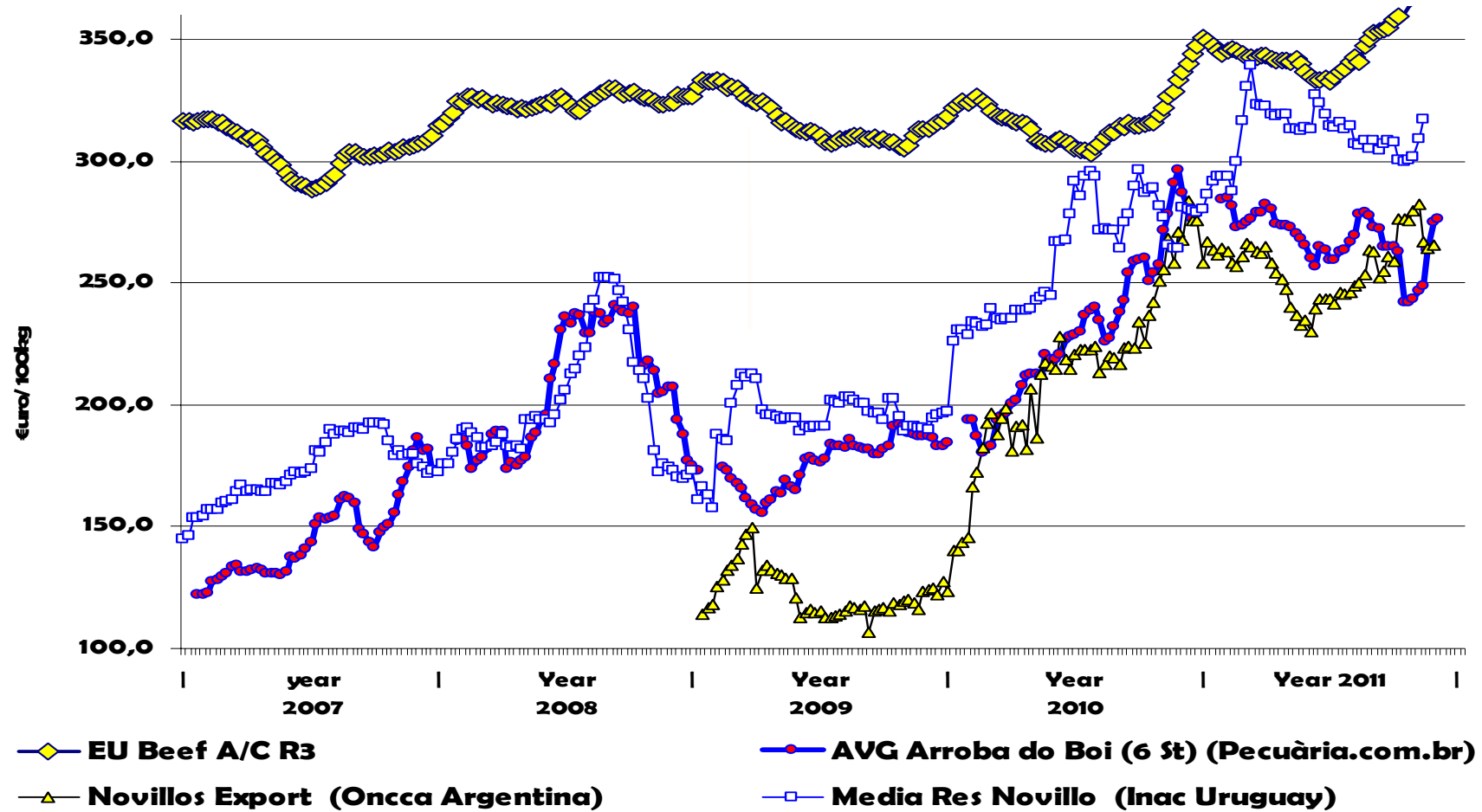


World beef market



European Commission
Agriculture and Rural Development

Market prices for Adult Male Bovine in Brazil (Pecuaria.com.br), Argentina (Oncca) Uruguay (Inac) and EU



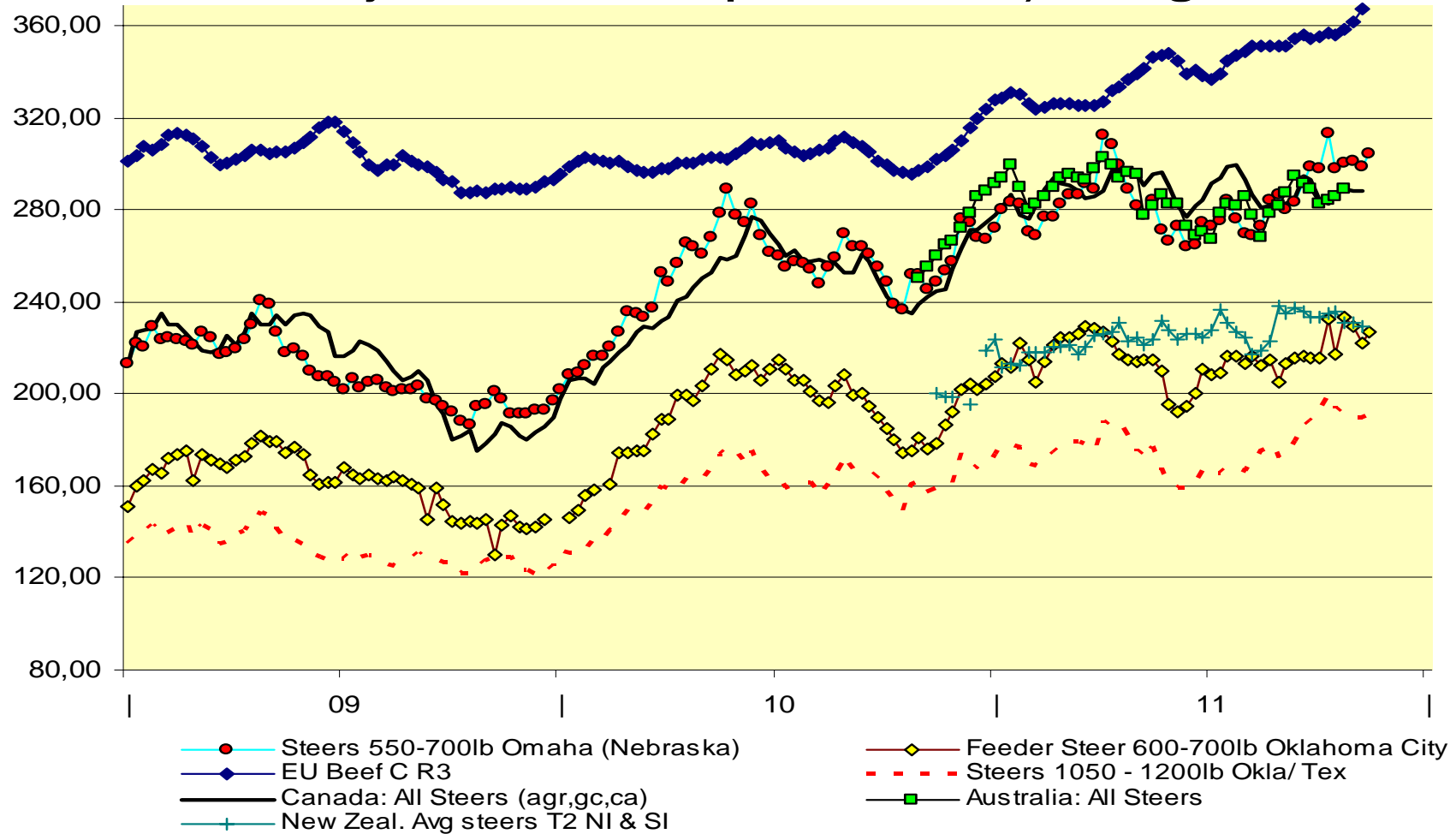


World beef market



European Commission
Agriculture and Rural Development

weekly US & EU Steer prices in €uro/100kg



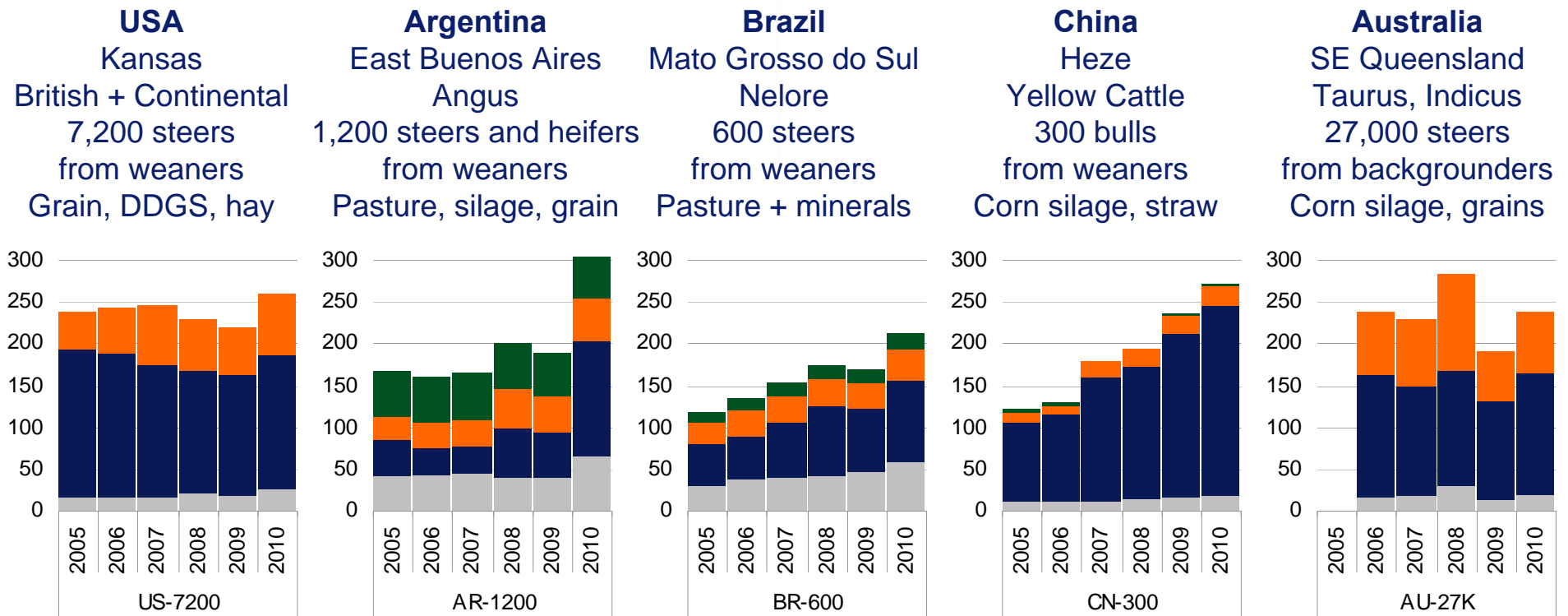


World beef market



Cost developments for selected non-EU-farms 2005-2010

€ per 100 kg carcass weight sold

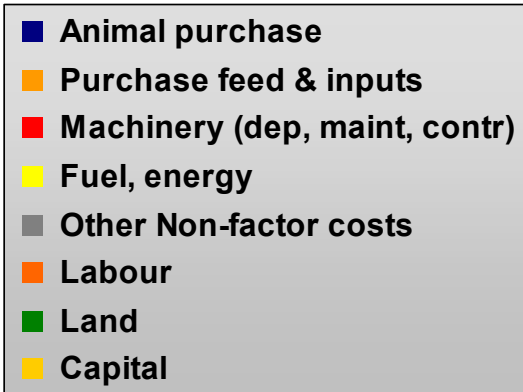
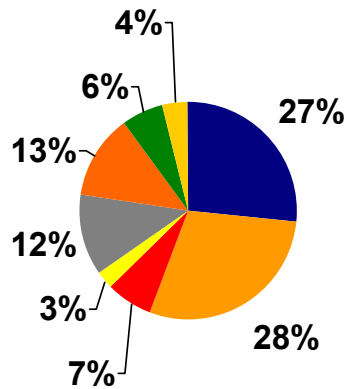


World beef market

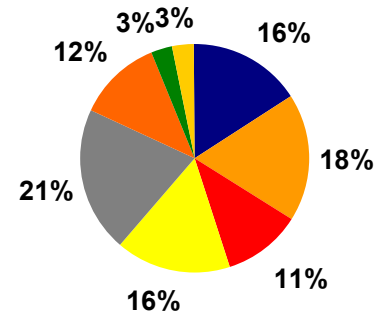


Production system, animal type determine cost structure

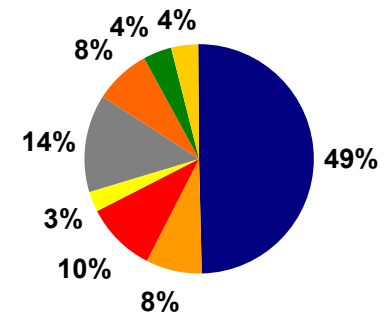
Silage, dairy calf (Fleckvieh)



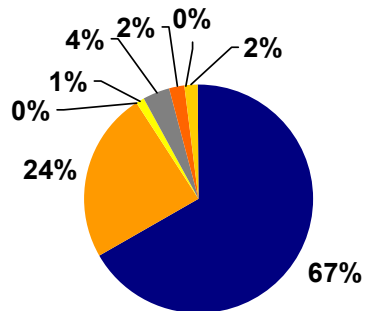
Silage, dairy calf (Holstein)



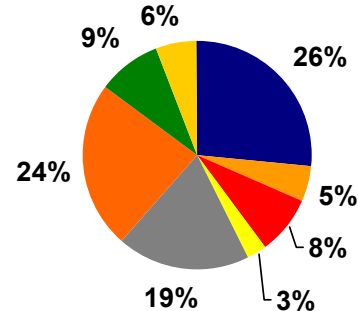
Silage, weaner



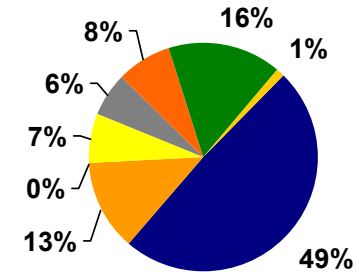
Feedlot



Extensive pasture



Cut & Carry





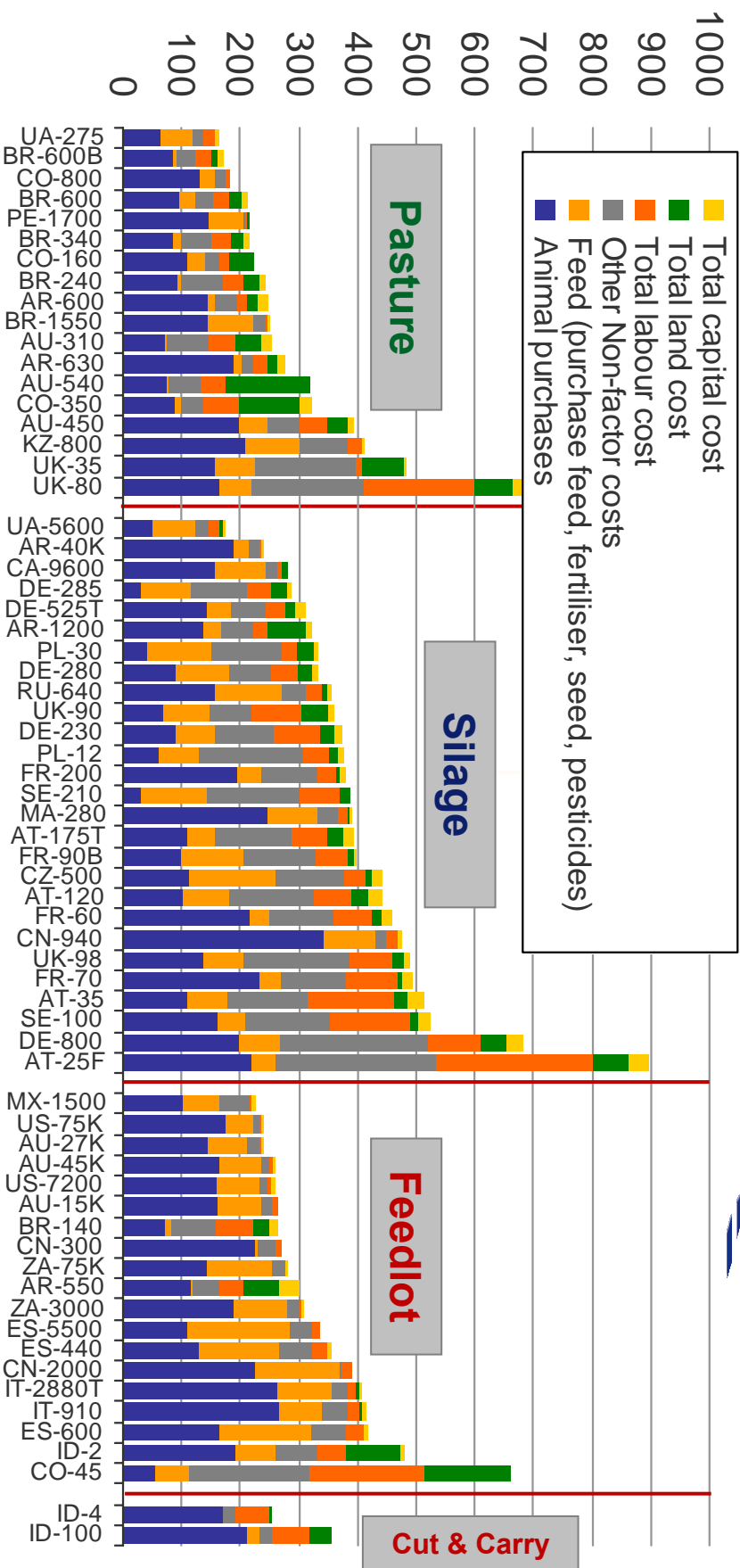
World beef market

European Commission
Agriculture and Rural Development



Total cost of beef finishing by production system 2010

€ per 100 kg carcass weight sold



Short-term forecast



European Commission
Agriculture and Rural Development

PRODUCTION, CONSUMPTION and PRICES - 2011 & 2012 Forecast

	2009	2010	2011	2012
EU.15 PRODUCTION (1000T)	- 158 7 069 - 2,2%	+ 189 7 258 + 2,7%	+ 68 7 326 + 0,9%	- 204 7 122 - 2,8%
EU.15 CONSUMPTION (1000T)	- 43 7 399 - 0,6%	+ 78 7 477 + 1,1%	- 119 7 359 - 1,6%	- 107 7 252 - 1,5%
BALANCE	- 329	- 219	- 33	- 130
EU.15 - CARCASS PRICES				
ADULT MALE BOVINES (€/100 kg)	-1,7 314,9 - 0,5%	-0,7 314,3 - 0,2%	+29,8 344,0 + 9,5%	+5,9 350,0 + 1,7%
COWS (€/100 kg)	-12,8 226,8 - 5,3%	+5,0 231,8 + 2,2%	+32,4 264,2 + 14,0%	+3,6 267,7 + 1,4%

Sources : Estat New Cronos, Member States

Long-term forecast



European Commission
Agriculture and Rural Development

Prospects for beef/veal market in the EU DG AGRI Baseline for 2020

