





Ltd "Latvian Rural Advisory and Training Centre"

Information Internet solutions for promoting the entrepreneurship



Latvian Rural Network

Seminars

- Bank loans;
- Credit fund within the RDP.

Distance learning training program "Starting a business» consists of Training Modules - audio presentations:

- Business start-up steps;
- Available support for starting a business;
- Accounting basics for new entrepreneurs.



EUROPE INVESTING
IN RURAL AREAS



Ltd "Latvian Rural Advisory and Training Centre"

Training




Latvian Rural Network

Topics selected for capacity building of the rural business owners:


- Increasing the competitiveness of farms;
- Accounting and financial analysis for rural entrepreneurs;
- Marketing and business development in the digital environment.



EUROPE INVESTING
IN RURAL AREAS



Training (2)




Economic activity analysis and restructuring according to the market situation

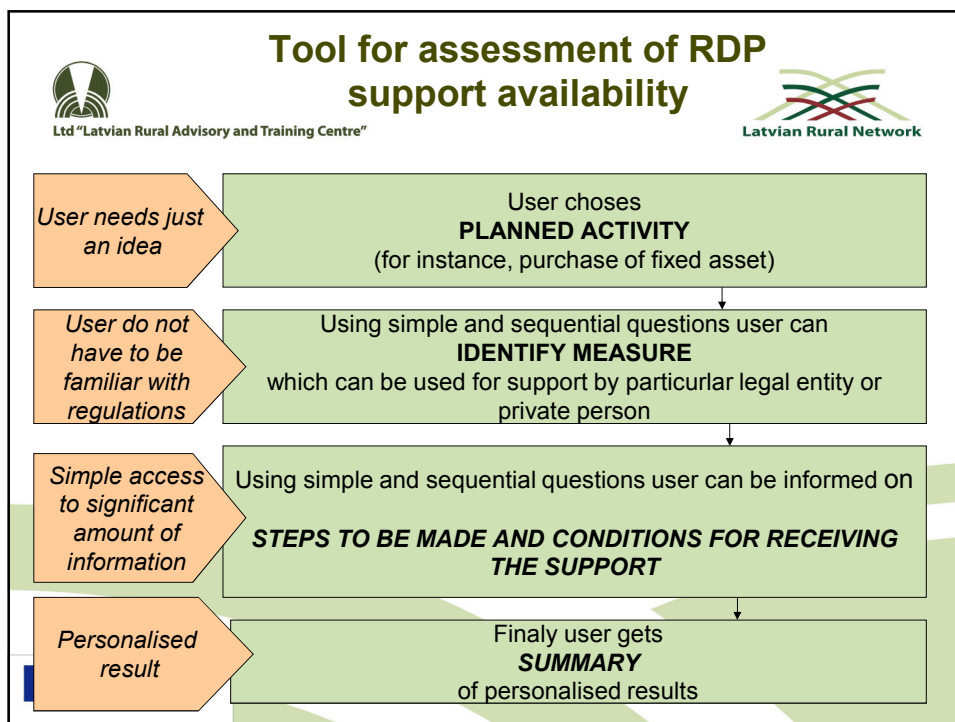
Training objective: promotion of farm restructuring in environment of economic crisis



•Main topics:

- Elaboration of farming “stabilisation” plan;
- Income and expenditure accounting analysis;
- Cash flow planning;
- Business planning using gross margin calculations;
- Accounting role for cost optimisation.



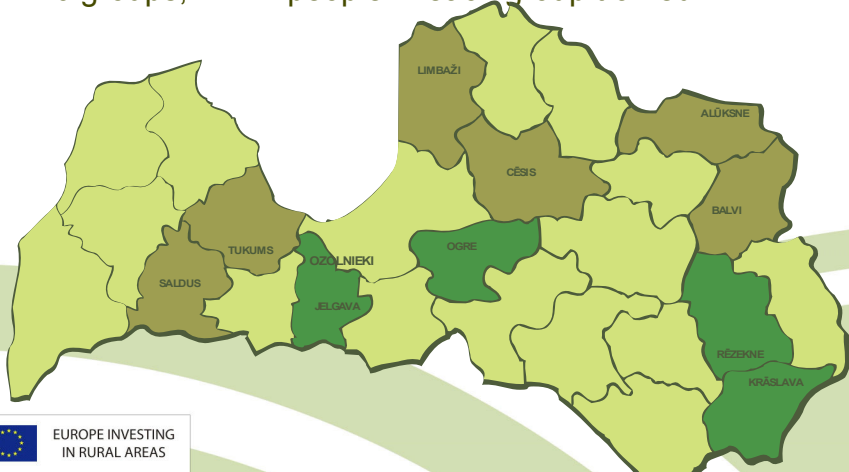
EUROPE INVESTING
IN RURAL AREAS





 Youth programm «Support to young people for starting entrepreneurship in rural areas»
 

Ltd "Latvian Rural Advisory and Training Centre"

- Target group – youth 18 – 30 years old;
- 10 groups, 12-14 people in each group trained.




 EUROPE INVESTING IN RURAL AREAS


 Youth programm «Support to young people for starting entrepreneurship in rural areas»
 

Ltd "Latvian Rural Advisory and Training Centre"

- Info day: financing (banks, RDP), experience and examples presented by young entrepreneurs;
- Training – 4 days (economics, accounting, business planning) – start preparing their own business plans;
- Advising – experts from Latvian Rural Advisory and Training Centre help to complete plans.




 EUROPE INVESTING IN RURAL AREAS

Youth programm «Support to young people for starting entrepreneurship in rural areas»



Ltd "Latvian Rural Advisory and Training Centre"



Latvian Rural Network

Some ideas from young people after training courses:

- Quail farming;
- Drawing and design company in Mechanical Engineering;
- Establishing cherry-tree garden;
- Children's clothing and toy production;
- Straw pellet production;
- Garlic production;
- Services in household plots - ploughing, harrowing, wood chopping, etc.;
- Plant nursery;
- Children's food production from local fruits and vegetables.



Youth programm «Support to young people for starting entrepreneurship in rural areas»



Ltd "Latvian Rural Advisory and Training Centre"




Latvian Rural Network

Some remarks:


- Work for yourself not for others;
- "Need for push", "start in school";
- Training – on creativity, idea generation and step by step implementation;
- Would appreciate more good practice examples and meetings with young entrepreneurs;
- There is not enough information about opportunities, financing options in rural areas;
- "Book-keeping is for accountants".





Ltd "Latvian Rural Advisory and Training Centre"

Business animation




Latvian Rural Network


- Advising:
 - Professional;
 - Economics;
 - Accounting;
- Assistance in preparation business development plan;
- Assistance over the implementation of development plan.

Results in year 2011
385 enterprises

Planned in year 2012
590 enterprises



EUROPE INVESTING
IN RURAL AREAS



Ltd "Latvian Rural Advisory and Training Centre"

Business animation (2)



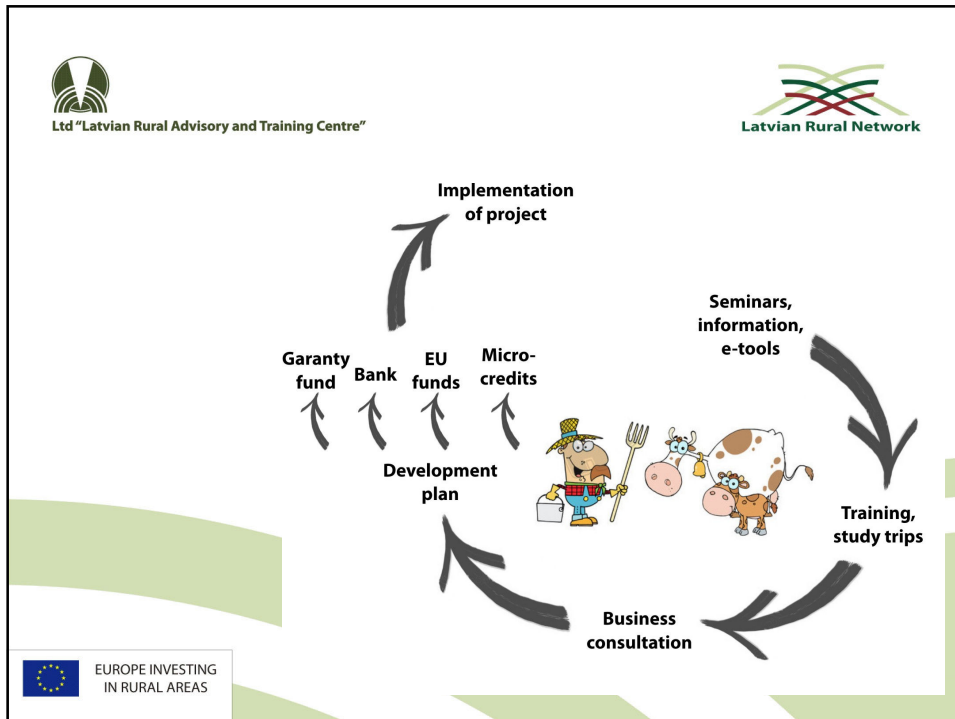
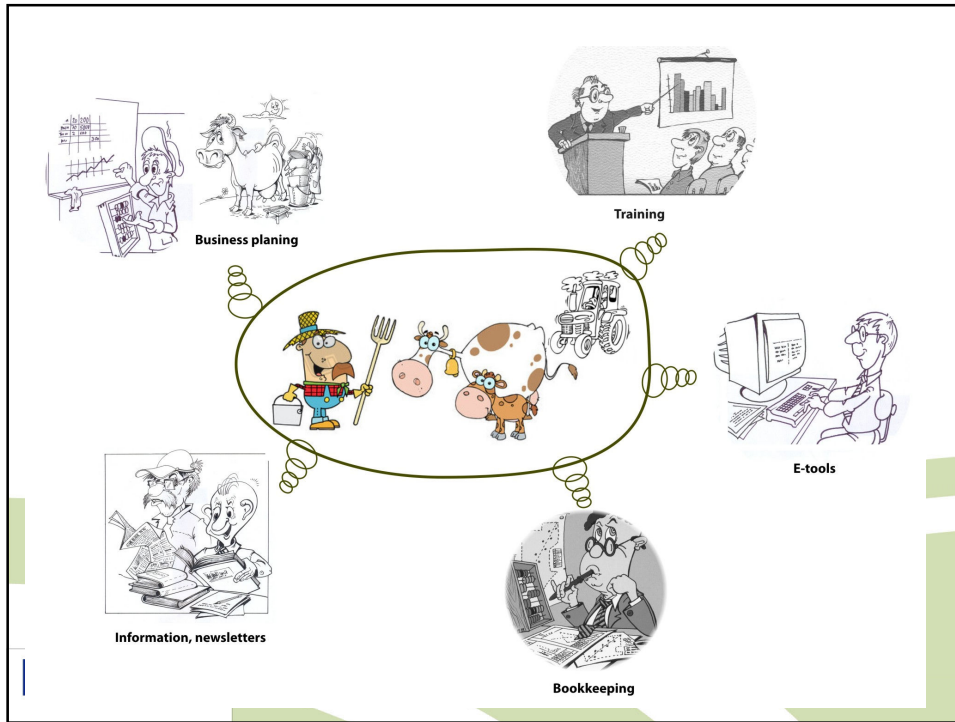
Latvian Rural Network

Comments:

- «Entrepreneur can't make all by himself»;
- «Advising free of charge is a great support for new entrepreneurs»;
- «No need to threaten with difficulties, but to encourage to do»;
- «I have called consultant even during the night»;
- «My fellows are in programm»;
- «The problem is to receive funding from the bank»;
- «Not ready to pay for advising»;
- «You can consult but decision I have to make myself».



EUROPE INVESTING
IN RURAL AREAS





Ltd "Latvian Rural Advisory and Training Centre"



Latvian Rural Network

edgars.linde@llkc.lv

www.laukutikls.lv



EUROPE INVESTING
IN RURAL AREAS