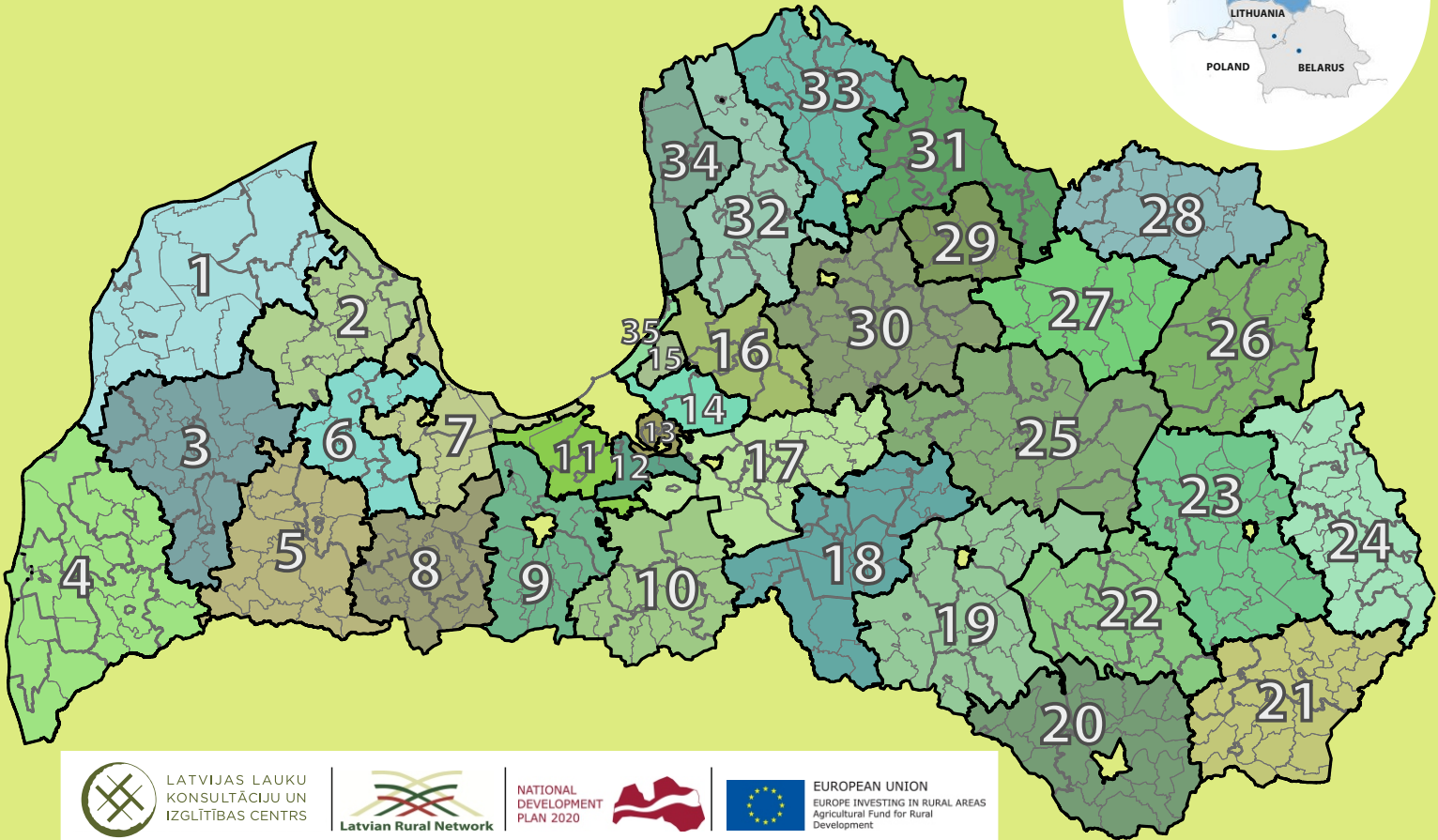


LOCAL ACTION GROUPS IN LATVIA



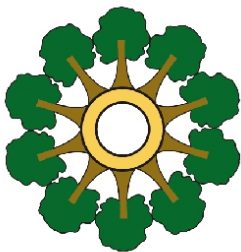
 LATVIJAS LAUKU
KONSULTĀCIJU UN
IZGLĪTĪBAS CENTRS

 Latvian Rural Network

NATIONAL
DEVELOPMENT
PLAN 2020 

 EUROPEAN UNION
EUROPE INVESTING IN RURAL AREAS
Agricultural Fund for Rural
Development

1



ZBA Ziemeļkurzemes
Biznesa Asociācija

The Northern Kurzeme LAG, (and FLAG), formed in year 2000, is located in northwest Latvia. The area is bordered by a 144 km stretch of the Baltic coast, from the parish of Jurkalne to the Cape of Kolka, and 12 km of the coastline around the Gulf of Riga.

It consists of municipalities of Dundaga, Ventspils, part of Talsi (parishes of Iļve, Lube and Valdgale) – 17 parishes and one town. Total area: 3 492 km².

Population: 19 888 (01.01.2016).

The LAG board which is the decision-making body consists of 12 members, but all 56 members of the are actively involved. They represent municipalities, fishermen's organizations, businesses, NGOs and private individuals.

The area's most important asset is the Baltic coast, noted for its natural beauty and its tourism and fishing potential. The area also has a very rich cultural heritage, including religious architecture from the 16th–19th Century, Baltic German manor buildings, and Suiti (a small catholic community) and Liv (a Finno-Ugric ethnic group) traditions. The coastal area has large beaches, which support many business activities, mostly in the tourism sectors. Extensive forests cover about 71% of the area.

STRATEGIC GOALS

- To promote micro, small and medium businesses in rural areas
- To promote the growth of public organizations and local communities
- To promote the quality of the living environment and development of public infrastructure
- To promote the development of enterprises and to enhance their competitiveness
- To promote the values of nature and to succeed the conservation of coastal environment
- To develop and improve the public infrastructure of coastal areas and its cultural heritage



EXPERIENCE OF TNC

The Northern Kurzeme LAG has begun negotiations and an exchange of views with the Estonian NGO Development Centre and Estonian LAG "Green Riverland" on a common international progress of the project, which still intend to engage partners from Slovenia and Portugal

It has signed a letter of intent with Poland LAG "Morenko" on cooperation in fisheries development and exchange of experience

CONTACTS



GUNTA ABAJA, EVITA ROGE



www.ziemelkurzeme.lv



zba@ziemelkurzeme.lv



+371 29172814, +371 29295234



14 Pils Str., Dundaga, Dundagas parish,
Dundagas district, LV-3270, Latvia

TRANSNATIONAL COOPERATION

Possible collaboration directions during
period 2014–2020

- Exchange of experience to reduce seasonality in business, development of new products and new technologies
- Youth involvement in business in rural areas
- Local home compounders (farmers), fisheries and local craft marketing activities
- Offer of agriculture and fisheries heritage
- Business development and public activities in nature protection areas

2



Society «Talsi District Partnership» is a local action group, founded in Talsi on 21st December, 2004. Until July of 2009 the partnership members are 15 municipalities of Talsi District as well as those participating in organizations and entrepreneurs. After the territorial reform partnership covers three municipal areas: Talsu District with 4 cities – Sabile, Stende, Talsi and Valdemarpils and with 14 parishes – Abava, Arlava, Bālgale, Gibuli, Ive, Kulciems, Laidze, Lauciene, Libagi, Lube, Strazde, Valdgale, Vandzene, Virbi; Roja District and Mersrags District. Currently in partnership operates 19 members – 3 municipalities, 14 societies, 1 Ltd. and 1 private

STRATEGICAL AIMS

The strategy will be implemented by attracting the funding from the European Agricultural Fund for Rural Development and European Maritime and Fisheries Fund. The European Maritime and Fisheries Fund will be acquired in Roja District and Mersrags District.

To promote the sustainable development of the business environment and implementation of innovations in partnerships area

- EAFRD 1 „Establishment and development of small and medium-sized businesses, including the development of tourism business”
- EAFRD 2 „Creating and improvement of the sales environment of products/services”

To promote the development of quality living environment and the activities of civil society and citizens associations

- EAFRD 3 „Diversification of public activities, support for the activities proposed by the public for the development of local community”

STRATEGICAL AIMS

To promote the development of public infrastructure in partnerships area – renovating and improving objects, infrastructure which is available to the public, creation of new infrastructure

- EAFRD 4 „Improving and developing public infrastructure”

To promote the development of coastal enterprises and innovations

- EMFF 1 „Developing, diversification and mitigating the effect of seasonality for fisheries”

To promote the conservation and use of coastal environment and nature resources

- EMFF 2 „Conservation and restoration of environment and nature resources of fisheries areas, climate change mitigation”

To establish and develop the coastal areas public infrastructure and to provide accessibility of fishing and maritime cultural heritage



EXPERIENCE OF TNC

Society «Talsi District Partnership» and the LAG «Raseiniu krasto bendrija» from Raseiniai District Municipality, Lithuania are continuing the exchange of experience in the implementation of the LEADER projects within the cooperation agreement signed in 2008 – Lithuanian colleagues and potential project applicants have attended an experience exchange seminar «Exchange of experience, LEADER project activities and good experience of the project implementers in Talsi District Partnership», while the Talsi District Partnership has visited the local action group of Raseiniai District Municipality for the purpose of experience exchange

CONTACTS



ANTRA JAUNSKALZE



www.talsupartneriba.lv



talsu.partneriba@inbox.lv



+371 29193595



21 A Kr. Valdemara Str., Talsi,
Talsu district, LV-3201, Latvia

TRANSNATIONAL COOPERATION

Possible collaboration directions during
period 2014–2020

ECONOMIC COOPERATION

- Cleaning-up of protected natural areas
- Tourism activities, creating common tourism services
- Exchanging experience of small manufacturers and craftsmen
- Environmentally friendly farming

SOCIAL ACTIVITIES

- Culture and sports activities
- Long-life learning and interest-related education for different target groups
- Common promotion of geographically protected products, fishery products, ancient crafts and skills

3

Darīsim paši!

STRATEGIC GOALS

- Local economics strengthening
- Improving the quality of the living environment and social activities diversification, including persons with disabilities, youth, seniors and families with young children
- Interterritorial and international cooperation

Association “Lets do it ourselves!” is founded in year 2006 with aim to provide a better life quality for local inhabitants, encouraging rural economic development, access to services and improving the quality of activities of the association area

Association covers the territory of three municipalities – Kuldīga municipality, Skrunda and Alsunga municipality, which includes 20 territorial units, including two towns and 18 counties

Associations members are district councils, legal and natural persons and other associations

Elected association board consists of 9 people (3 national and local government representatives, three business representatives and three non-governmental organizations)

EXPERIENCE OF TNC

Association «Lets do it ourselves!» has developed a wide range of cross-border cooperation projects range of partners from Lithuania, Finland, Estonia, France and Portugal

Inter and international cooperation projects were organized in large, large-scale festivals, events and workshops



TRANSNATIONAL COOPERATION

Possible collaboration directions during period 2014–2020

- Developing transnational cultural cooperation and encourage the local craft traditions promotion and continuity of future generations, through an innovative idea of cooperation development between the various European countries
- To promote cooperation between Latvian and other European LAGs territories to entrepreneurs and craftsmen, to promote entrepreneurship and crafts promotion, creative exchange of ideas, local products towards the domestic and international market and promote local produce marketing strategy
- Promote local and inter-area population exchange of experience, promoting a healthy and active way of life, including young people, seniors and families with young children

CONTACTS



IEVA BIRBELE



www.darisimpasi.lv



darisim.pasi@gmail.com



+371 29463295



4 Pilsetas square, Kuldiga,
LV-3301, Latvija

- To promote public education on local and international level, innovative products and services, the creative exchange of ideas and their role in tourism development
- To promote environmental protection activities at the local and international level
- Develop cultural and creative industries activities stressing the importance of local development and internationally
- Promote tangible/intangible cultural heritage preservation and promotion activities of transnational and/or internationally
- Traditional events – holidays/festivals, including persons with disabilities, youth, seniors and families with young children, providing association and transnational co-operation partners area residents social activity
- To promote cooperation between Latvian and other European countries LAG for young people living in the territory by supporting their activities – a common application development, exchange point installation etc

4



STRATEGIC GOALS

To promote sustainable and productive development of entrepreneurship in local area

To promote development of attractive living and work environment

To promote competitive and sustainable development of the Baltic Sea coastal in "Liepāja District Partnership" area

Association established on September 19, 2006.

Local development strategy is implemented in 8 administrative territories and Liepāja city, covering approximately 40 000 inhabitants. Total area 3654 km².

41% of the territory is forest, 45% the utilized agricultural area and 5% of the territory is water. They have direct access to the Baltic sea 111 kilometres. The most important economic sectors are agriculture, forestry (logging), fisheries and tourism.

On 1 July in 2015 association have 72 members – 8 municipalities, 27 associations and foundations, 12 Ltd., 3 peasant/fishery farms, 2 individual merchants and 20 individuals. Since September 2015 on the basis of the cooperation agreement in the partnership acts Liepāja City Council. Governing structure is divided into council of 13 members and is elected every four years.





LIEPĀJAS
RAJONA
PARTNERĪBA



CONTACTS



INITA ATE, SANTA BRALE



www.lrpartneriba.lv



inita.a@inbox.lv, info@lrpartneriba.lv



+371 63491806, +371 26595623



12 Krasta Str., Grobina,
Grobina district, LV-3430, Latvia

EXPERIENCE OF TNC

Has previous experience of the international cooperation with Lithuania – participation of young people through sport

TRANSNATIONAL COOPERATION

Possible collaboration directions during period 2014–2020

- Entrepreneurship
- Creation of local products marketing
- Tourism services in the Baltic Sea coastal
- Added value to fishery products, the improvement of realization, modernization

5



**SALDUS RAJONA
ATTĪSTĪBAS BIEDRĪBA**

Established at 20 September 2006, by joining
2 administrative territories of local municipalities:
Saldus county and Broceni county.

Territory of Saldus and Broceni:

Approx inhabitants 30320

Total area 2176,5 km²

Members of Saldus District Development
Association: 2 counties, 9 NGOs, 3 business persons,
5 individuals

STRATEGIC GOALS

- To support initiatives of strengthening of local economy for community needs
- To support initiatives of strengthening of local potential for community needs





**SALDUS RAJONA
ATTĪSTĪBAS BIEDRĪBA**

CONTACTS



SANDRA FRIDRIHSONE



www.srab.saldus.lv



sandra.fridrihsone@saldus.lv



+371 29494781



2 Striku Str., Saldus, LV-3800, Latvia

EXPERIENCE OF TNC

Collaboration and experience exchange with LAG from France in maintenance of ceramics traditions in Latvia and France

TRANSNATIONAL COOPERATION

Possible collaboration directions during period 2014–2020

- Promotion of development in tourism industry, promotion of local services and products in the market, maintenance of cultural heritage and traditions

6



MEMBERS OF KANDAVA PARTNERSHIP

3 counties

3 municipal institutions

19 NGOs

13 businessmen

13 individuals

Local Action Group established at 8 August 2006, by joining
6 territories of local municipalities:

- Kandava county
- Tukums county (3 local municipalities)
- Jaunpils county

Territory of Kandava Partnership:

- Approx. 16 000 inhabitants, int. al. 4000 in
Kandava town
- Total area 1218,78 km²
- Territory is joined by Abava river

STRATEGIC GOALS

- To promote establishing and development of
micro, small and medium enterprises
- To support development of public
infrastructure
- To develop, maintain and rationally use
available nature resources, historical and
cultural heritage
- To promote development of social activities



CONTACTS



INTA HAFERBERGA



www.kandavaspartneriba.lv



intaha@inbox.lv



+371 28390394

TRANSNATIONAL COOPERATION

Possible collaboration directions during
period 2014–2020

- Promotion of development in tourism industry
- Promotion of local services and products in the market
- Maintenance of cultural heritage and traditions



7



LAUKIEM UN JŪRAI

STRATEGIC GOALS

- Diverse, open to innovation, to the existing resource-based competitive business development
- High-quality, effective and attractive living environment development
- Natural resources and cultural heritage sustainable management and use

LAG “Partnership for Rural and Sea” is location in middle of Latvia, near the capital city Riga, territory includes 10 parishes and 1 town – Jurmala. We are 1 of 7 FLAG in Latvia and the LAG area has a 76.4 km coastline and is situated along the Gulf of Riga. The coastal area has a well developed fish processing sector and tourism, but agriculture also makes an important contribution to the local economy, helping to keep the unemployment rate below that of neighboring areas

The main protected area in LAG territory are Kemeru National Park (31 400 ha), NATURA 2000, Engures lake nature park

Population – 73353, surface (area/km²) – 1316.38 km²





CONTACTS



ILZE TURKA



www.plj.lv



ilze.turka@plj.lv



+371 29528441



4 Talsu Str., Tukums, LV-3101, Latvia

EXPERIENCE OF TNC

Cooperation project with Lithuania LAG “Kupiskio rajono vietos veiklos grupe” about exchange of experience and establishment of cooperation among youth dance groups

TRANSNATIONAL COOPERATION

Possible collaboration directions during period 2014–2020

- Tourism activities – in protected areas, coast areas, traditional crafts promotion
- Cultural activities (dance, songs – for young people and seniors in inland areas)
- Sport activities promotion for children and young people
- Protected areas use for visitors and public education

8



STRATEGICAL AIMS

DEVELOPMENT OF ENTREPRENEURSHIP BASED ON LOCAL RESOURCES

- To ensure development of complex small businesses in the area by putting local resources to productive use, promoting involvement of local inhabitants in strengthening of economy, especially supporting introduction of new products and technologies

DEVELOPMENT OF THE QUALITATIVE LIVING ENVIRONMENT FOR THE INHABITANTS OF DOBELE DISTRICT RURAL PARTNERSHIP

- To provide care for the landscape and qualitative living environment for inhabitants of the Partnership area by availability and high quality of cultural, health, social, education and other services. To promote diversification of local public activities and offer qualitative opportunities for leisure time activities

Dobele District Rural Partnership was founded in June, 2005. Its target is to promote public initiative and civic participation this way contributing to sustainable development in rural area. It has 42 members.

The area of Dobele District Rural Partnership covers three local authorities in Zemgale region – Dobele, Tervete and Auce. The total area of the Partnership is 163 hectares.

Total number of inhabitants involved in Dobele District Rural partnership is 31 078. There are situated two cities in the area of the partnership – Dobele with 9 710 inhabitants and Auce with 2 418 inhabitants.

The main tasks of the partnership – is to promote public initiative and participation in public processes, to develop cooperation among all involved institutions, to educate and inform inhabitants about rural development issues, to elaborate strategies for sustainable rural development and be responsible for implementation of strategies attracting financial, material and intellectual resources.





CONTACTS



INETA VINTERE



www.dobelespartneriba.lv



ineta.vintere@doms.jelgava.lv



+371 22026755

EXPERIENCE OF TNC

The Partnership has experience in two international LEADER cooperation projects from the last LEADER programme period. One project concerning tourism development issues was implemented in cooperation with the partnerships from England and Greece (budget – EUR 24 273.00). The other project promoting crafts development was implemented with partnerships from Lithuania (budget – EUR 39 140.00)

TRANSNATIONAL COOPERATION

Possible collaboration directions during period 2014–2020

- Experience exchange in preservation of culture and historic heritage
- Provision of crafts, traditions and culture activities;
- Promotion of entrepreneurship development, involving craftsmen
- Involvement of young people in entrepreneurship, development of consultations about career opportunities
- Experience exchange in introduction of new innovative methods
- Promotion of competitive tourism development;
- And other topics that promote implementation of targets set in the strategy

9

Lielupe 
lauku partnerība

The LAG «Rural partnership «Lielupe»» has been functioning since 2005

Members are NGO`s, municipalities and entrepreneurs

Two municipalities – Jelgava Municipality and Ozolnieki Municipality – are the partnership's members and in total there are 32 994 inhabitants in the territory of the partnership

STRATEGIC GOALS

- LOCAL ECONOMY
- TERRITORIAL ATTRACTIVENESS
- COOPERATION AND EXPERIENCE
- The attractiveness of the local economy and territory is based on projects implemented by their submitters, while the promotion of cooperation and the build-up of experience involve the LAG's activity in the field of international and inter-territorial cooperation

STRATEGIC GOALS

Four activities are defined according to the strategic goals:

- Support to non-farm businesses, including agricultural processing, rural tourism and crafts
- Enhancement of the public infrastructure of populated places
- Preservation and restoration of cultural and historical heritage
- Support for providing public activities and services to local residents



EXPERIENCE OF TNC

RP «Lielupe» has experience in one transnational LEADER cooperation project from the last LEADER programme period together with Joniski Rural Partnership (Lithuania), which was entitled «Encouraging of Local Entrepreneurship» (local food development activities and different crafts), with a total budget of EUR 39 370

CONTACTS



LIGA SVANBERGA



www.partneribalielupe.lv



lielupe@partneribalielupe.lv



+371 26399946

TRANSNATIONAL COOPERATION

Possible collaboration directions during period 2014–2020

- Entrepreneurship, food artisans and craft
- Youth activities
- Cultural and historical heritage

10



Local action group (LAG) Bauska District Rural Partnership was established in 2006 and unites Bauska, Vecumnieki, Rundale and Iecava county territories for implementation of the local and regional development strategy

Population: approximately 50 000

STRATEGICAL AIMS

PROMOTION OF THE ENTREPRENEURSHIP AND SERVICES DEVELOPMENT

- To promote and diversify regional economy and to develop production
- To promote development and cooperation in the field of tourism

TO PROMOTE PUBLIC INVOLVEMENT IN THE PROCESS OF CREATING A HIGH QUALITY ENVIRONMENT FOR LIVING

- Development of public services for county needs
- Development of public infrastructure





CONTACTS



JOLANTA KALINKA



www.bauskaspartneriba.lv



jolanta.lauva@inbox.lv



+371 29781969



1 Uzvaras Str., Bauska, Bauska county,
LV-3901, Latvia

EXPERIENCE OF TNC

We had implemented two cross-border cooperation projects with Lithuanian partner – Birzai LAG

1) "Youth without borders"

Purpose – to strengthen international relationship between Bauska and Birzi local action groups in the field of youth work with the aim to build awareness between young people, to promote active citizenship and civic participation, to break stereotypes between both countries and to strengthen cooperation, develop leadership and creativity

2) "Preserving of traditional cultural activities in Bauska and Birzi districts"

Purpose – strengthen cooperation between Bauska LAG and Birzi LAG in preserving traditional culture activities (traditional music, dances, songs and national costumes) for next generations

TRANSNATIONAL COOPERATION

Possible collaboration directions during
period 2014–2020

Promotion of business cooperation initiatives

Objective: to promote cooperation between municipalities, NGO's and entrepreneurs

11

Pierīgas Partnerība

Association «Pierīga partnership» is a non-governmental organization, representing the region of Marupe, Babīte, Olaine municipalities near capital Riga. It was established in 2009. Three municipalities together provide high quality living environment for their citizens, social activities, leisure time possibilities and attractive tourism facilities

LAG includes the territory of 645 km² with a population of over 47 000 people

STRATEGIC GOALS

In our local development strategy for period 2014–2020 there are three main aims and according activities:

DEVELOPED AND COMPETITIVE ENTREPRENEURSHIP ENVIRONMENT

- Support for tourism and active leisure
- Support for the processing of agricultural products, home industry and craft
- Support for the creation and development of entrepreneurship

STRATEGIC GOALS

IMPROVED SOCIAL AND SOCIETAL ACTIVITIES

- Support for the diversification of societal activities

ATTRACTIVE LIVING ENVIRONMENT

- Support for projects strategically relevant for the territory
- Support for the improvement of local territory, including natural and cultural objects, for the accessibility and quality of services



Pierīgas Partnerība
MĀRUPE|BABĪTE|OLAINE

**PLACE
WHERE
YOUR IDEAS
GROW**

CONTACTS



ALINA LUKJANCEVA



www.pierigaspartneriba.lv



alina.lukjanceva@pierigaspartneriba.lv



+371 28644888



Mazcenu aleja 33/3, Jaunmarupe,
Marupes district, LV-2116, Latvia

EXPERIENCE OF TNC

Cooperation project with Lithuania LAG to develop tourism and fisheries in rural region. Participants had the opportunity to exchange experiences, to visit realized projects and to share ideas for future cooperation and development. Project took place both in Latvia, the territory of Pierīgas partnership, and Lithuania.

Pierīgas partnership as a member of Latvian Rural Forum participated in long-term project with Moldova to develop cooperation and LEADER approach. The project is concentrated on sharing experiences and implementing in real life – development of the LAG, work with volunteers, members, examples of realised projects, activation and cooperation of local community in different sectors. The project took place both in Latvia (both local and national level representatives visited Pierīgas partnership territory to gain experience) and in autumn next stage will be in Moldova.

TRANSNATIONAL COOPERATION

Possible collaboration directions during
period 2014–2020

We are interested in such cooperation themes as the encouragement of small and medium entrepreneurship to promote rural economy (entrepreneurship, support for small and start-up entrepreneurs, direct sales, tourism, area based products, production based on local resources).

We are also interested in cooperation to find the best ways to activate local community, e.g. youth, in any activities favouring cross-sector collaboration. We are also interested to increase quality and capacity of local initiatives.

12



PARTNERĪBA DAUGAVKRASTS

LAG «Partnership «Daugavkrasts»» was established in 2009

Kekava County: Area: 273 km²

Number of population: more than 22 400

Administrative territories: Balozi town, Daugmale parish and Kekava parish

Largest river: Daugava; Distance: to Riga – 18 km

LAG is a partnership which brings together economic and social partners representing the interests of all sectors of society – public, private and civil society sector organizations from the Kekava county territory

STRATEGIC GOALS

- **ECONOMIC DEVELOPMENT OF TERRITORY**

Creation and development of micro, small and medium enterprises

Environment creation or improvement, where is domestic production sold

- **RAISE THE WELFARE OF THE POPULATION, DEVELOP THE NATURE AND CULTURE**

Improve the public infrastructure and the quality of environment and develop the public objects

Promote the lifelong learning, diversify and promote the social activities





TRANSNATIONAL COOPERATION

Possible collaboration directions during period 2014–2020

Culture, sports, education, activities of non-governmental organizations and interest groups, environment, tourism, promotion of the local production, youth activities, entrepreneurship, philanthropy.

See more: <http://www.kekava.lv/pub/index.php?lang=eng>

CONTACTS



DAIGA KRUMINA



www.daugavkrasts.lv



vrgdaugavkrasts@inbox.lv



+371 25418113



19 Gaismas Str., k. 9, Kekava,
Kekava county, LV-2123, Latvia



13



Stopiņu Salaspils Partnerība

«Stopiņu and Salaspils Partnership» (LAG) was established in 2009 and represents Stopiņu municipality and rural area of Salaspils municipality.

LAG mission is to encourage community responsibility for their living and working environment and development by knowledge and organizational abilities.

LAG has 25 members, 19 of which are legal entities (2 municipalities, 11 non-governmental organizations, 2 scientific institutes, 1 farm, 1 limited partnership, 2 Ltd.) and 6 individuals who represents groups with a different public interests.

It should be emphasized that the number of members of the LAG has increased since establishing – from 18 members in 2009 to 25 members in 2015

STRATEGICAL AIMS

STRENGTHENING INITIATIVES OF LOCAL ECONOMIC

- Support for new product and service creation, development of existing products and services, the realization of the market and the quality of working conditions
- Support for the processing of agricultural products, the realization in the market and the improvement of the quality of working conditions
- Support for the development or improvement of the environment, where local food production will be realized

STRATEGICAL AIMS

- Support for employer's competencies and increase of productivity

THE DEVELOPMENT OF INITIATIVES OF LOCAL AREA POTENTIAL

- Support for the local area, including natural and cultural heritage sites, arrangement of access to services, quality and reach
- Support for diversification of the social activities for local population



EXPERIENCE OF TNC

Cooperation agreement with Skuodas Local Action Group (Lithuania), provided for exchanges of good practices, experiences and information about the development of rural areas. With aim to promote regional traditions and cultural heritage, to develop and implement activities which provided in the Strategy of both sides. Initiate, develop and implement transnational cooperation projects

Cooperation project with the Association pour le développement du Pays d'Aurillac (France), the project aim – to develop cooperation between Ulbrokas music and art school and Aurillac music school. During this cooperation project we organized concerts in Latvia and France and participated in the accordion music festival in Raulhac (France)

CONTACTS



AGNESE BERZINA



www.stopini-salaspils.lv



agnese.berzina@salaspils.lv



+371 29361190



1a Instituta Str., Ulbroka, Stopinu parish,
LV-2130, Latvia

TRANSNATIONAL COOPERATION

Possible collaboration directions during
period 2014–2020

Transnational cooperation objective is to create the environment for a competitive and attractive local society and settled families.

To encourage and promote home produced production, crafts and the development of other small business forms.

To find new ideas (innovative solutions) about culture activities, sport and the provision of services, thereby contributing achievement of the M1 and M2 strategic goals

14



STRATEGICAL AIMS

The general aim of LAG is to develop and create a favorable environment for living in both- in Ropazi and Garkalne districts, as well as raise the quality of life for society within the territory

Organization was established in July 20th, 2009 as «Ropazi Partnership». In 2015 leaders of «Ropazi Partnership» together with organization «Zala varna» started a cooperation, and soon the decision was made to broaden capacity, unite these two organizations and change the name to «Ropazi, Garkalne Partnership». Operational area: Riga region, districts of Ropazi and Garkalne. Members of LAG are economically and socially active people, economic and social partners. Their work experience in the field of administration, social economics, entrepreneurship and non-governmental sector allows to realize and implement LEADER activities





CONTACTS



EVA HABERKORNE-VIMBA



www.ropazigarkalne.lv



eva.haberkorne@gmail.com



+371 29210007



3 Stadiona Str., Ropazi, Ropazi district,
LV-2135, Latvia

TRANSNATIONAL COOPERATION

Possible collaboration directions during
period 2014–2020

ENTREPRENEURSHIP DEVELOPMENT

- Educational seminars and trainings for entrepreneurs and individuals/employees
- Experience exchange for individuals/employees

TOURISM DEVELOPMENT

- Cooperation with tourist centres, experience exchange, educational seminars and trainings for individuals and potential entrepreneurs (handicrafts, hospitality, implementation of new services)

TRANSNATIONAL COOPERATION

Possible collaboration directions during
period 2014–2020

TERRITORIAL AND COMMUNITY DEVELOPMENT IN VILLAGES

- Cooperation of NGO and society, that contributes territorial development, especially populated places. (Education and NGO participation, recreation and sports, involvement in local policy-making, entrepreneurship promotion, living history popularization)

15



Association «Gauja Partnership» was founded in 2009, uniting economically and socially active people who represent both public and private sectors (counting 17 members in mid-2016)

Association's area of activity is the Adazi district, included in the Riga planning region, situated 25 km from the Capital city

STRATEGIC GOALS

DEVELOPMENT OF ENTREPRENEURSHIP AND EMPLOYMENT

The Adazi district has potential for production business development, development of service industries and biological farming. As further areas ready for future support we identify the development of production and processing industries, tourism (water tourism) and sports services etc.

STRATEGIC GOALS

IMPROVEMENT OF LOCAL TERRITORIES

The Adazi district shows a need for improved outdoor territories as well as better and more accessible nature and cultural objects

DIVERSIFIED SOCIAL ACTIVITIES

The district has a lack of suitable premises to promote social activity. Local residents, especially youth and children, need a chance to develop creatively and professionally. It is important to support social activities in the district that are based on local knowledge and interests



CONTACTS



ZANE PUPOLA



www.gaujaspartneriba.lv



zane.pupola@gaujaspartneriba.lv



+371 26591527



33a Gaujas Str., Adazi, Adazu district,
LV-2164, Latvia

EXPERIENCE OF TNC

Association «Gauja Partnership» hasn't developed an active international cooperation in the previous planning period, however talks were started with LAGs from Slovenia, Italy and Denmark

Common themes were environment, social issues, tourism, development of communities, home production

TRANSNATIONAL COOPERATION

Possible collaboration directions during
period 2014–2020

The association would like to focus especially on sharing and gaining knowledge and good practices for development of tourism, local producers and products, recreation and village communities

16



STRATEGIC GOALS

- Development of local entrepreneurship
- Higher life quality in rural areas

Riga Region Society of Rural Development (in Latvian RRLAB) has 1 099,31 km² territory around the capital Riga and about 36 770 inhabitants. During the first Leader period we managed 2 608 700 EUR in Rural development and Fishery programs. In the new period we start only in Rural development program with 1 300 000 EUR. There are 26 members – businessman, NGOs, self governments and private persons





EXPERIENCE OF TNC

Starting cooperation with Utena region LAG (Lithuania) and Leader-group Linnaseutu (Finland)

CONTACTS



VERNERS BERZINS



www.rrlab.lv



rrlab@inbox.lv



+371 28441636



Birzes 4, Allazi, Siguldas district,
LV-2154, Latvia

TRANSNATIONAL COOPERATION

Possible collaboration directions during period 2014–2020

- Vital entrepreneurship in rural areas
- New technologies and know how
- Better use of nature and cultural resource
- Many sided cultural and sports activity
- Active associations in villages including young people

17

zied
zeme

Public and Private Partnership Association „Zied zeme“ was established on May 25, 2005. It is situated in the central part of LATVIA, near capital city RIGA. Local development strategy is implemented in 5 administrative territories (Ikšķile, Ogre, Kegums, Lielvarde, Baldone district), covering 42 331 inhabitants. Governing structure is divided into council of 13 members and board of 1 member. Council represents non-governmental organizations, municipalities, entrepreneurs, women’s organizations and youth organizations as well as representatives from agriculture sector

STRATEGIC GOALS

- Strategy is focused on improvement of inhabitants' quality of life, by solving identified socio-economic problems. There are 5 actions:
- Development of small and medium entrepreneurs
- Added value for agriculture products
- New local product market channels
- Education of employees
- Preservation and access to local cultural, natural and heritage objects
- Development of local inhabitant activities and services



TRANSNATIONAL COOPERATION

Possible collaboration directions during period 2014–2020

- Exchange of experience among local business organisations (associations), export possibilities
- Sharing economy (crowdfunding, crowdsourcing, shared businesses, shared resources etc.)
- Development of new businesses, encouraging new entrepreneurs
- Development of a stable and permanent network of mentors

Possible collaboration directions during period 2014–2020

- Added value to local products and search for new market channels
- Agro-tourism, tasting tourism
- Development and management of recreational territories
- Bio-economy
- Innovative or sensitive technologies
- Mitigation of climate change (erosion reduction, energy efficiency, GHG emission reduction)

CONTACTS

LINDA CIRULE

www.ziedzeme.lv

info@ziedzeme.lv

+371 25623775

11 A Raina Str., Lielvarde,
LV-5070, Latvia



EXPERIENCE OF TNC

- With the aim to advertise local producers and to look for new market channels, we have engaged in international cooperation project called ABC local producers and created regional product brand Vidzeme basket. Partners from Czech republic, Lithuania and Latvia.
- ERASMUS+ project for international youth exchanges to activate young entrepreneurs. Partners from Finland, Hungary, Romania.
- Social entrepreneurship project with Norway, Latvia and Belorussia.
- Non-formal foreign visits and exchange of experience with Spain (Catalonia), Sweden, Finland, Greece (Rhodes island).

18



AIZKRAUKLES
RAJONA
PARTNERĪBA

STRATEGIC GOALS

- PROMOTING SUSTAINABLE BUSINESS DEVELOPMENT

Business creation and development

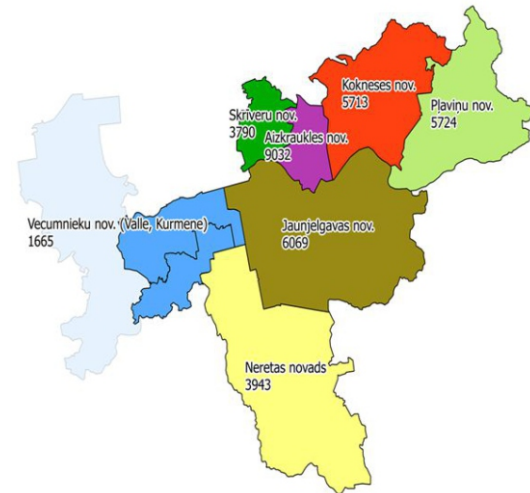
- PROMOTE QUALITY OF LIFE INCREASES IN AREA OF AIZKRAUKLE DISTRICT PARTNERSHIP ACTIVITIES

Support of social activities areas population

Improvement of Public infrastructure for accessibility of services



This partnership is supported by
Aizkraukle Region Municipality since 2005





CONTACTS



ALDA PAURA



www.aizkrauklespartneriba.lv



alda.paura@aizkrauklespartneriba.lv



+371 29487108



1-37 Lacpleša Str., Aizkraukle region,
Aizkraukle, LV-5101, Latvia

TRANSNATIONAL COOPERATION

Possible collaboration directions during
period 2014–2020

- Economic cooperation – the area which focuses on the development of tourism and other business-enhancing areas
- Local food
- Crafts and culture heritage conservation



AIZKRAUKLES
RAJONA
PARTNERĪBA

19



L A U K U
PARTNERĪBA
S Ē L I J A

Association „Rural Partnership “Selija”” is a LEADER type Local action group in the South-East of Latvia on the boarder with Lithuania. It was founded on October 29, 2004 with its primary aim to promote the local initiatives on the territory of 5 rural municipalities – Aknistes novads, Jekabpils novads, Krustpils novads, Salas novads and Viesites novads with the total number of 22000 inhabitants. The association`s 74 members include 13 local entrepreneurs, 56 NGOs and 5 rural municipalities.

We follow the principle – the local people are the best judges of their own needs. It is our mission to ensure that they get informed, inspired and involved in definite actions, including the LEADER program projects.

STRATEGIC GOALS

- To ensure support to the entrepreneurship by raising the quality of the local products and promoting their marketing.
- To support the development of the infrastructure and to raise our inhabitants` safety.
- To support a purposeful use of our natural resources and a healthy lifestyle of our people.
- To support the social and integrational activities of different social groups.
- To support the development of a qualitative culture and a responsible society.

TRANSNATIONAL COOPERATION

Possible collaboration directions during period 2014–2020

- To promote the development of tourism by making the territory more attractive and recognizable
- To favour the improvement of the quality of our local products and widening their sales options
- To ensure adoption of the cases of good practice in the fields of entrepreneurship, rural development and local identity



CONTACTS



SKAIDRITE MEDVECKA



www.partneribaseliija.lv



sk_medveck@inbox.lv



+371 26590352



16a Skolas Str., Akniste,
Aknistes district, LV-5208, Latvia

EXPERIENCE OF TNC

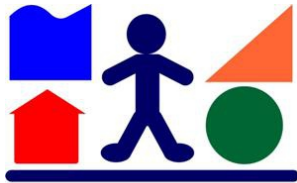
We have developed a good cooperation with the neighboring Rokishkis LAG in Lithuania and we are interested in a common LEADER project in future

We have had a valuable international cooperation experience in a EU Life-long Learning program Grundtvig Learning partnership project "Art and Landscape for Adult Education" with 7 partner organizations from Italy, Great Britain, France, Greece, Turkey, Norway and Latvia in 2013–2015



LAUKU
PARTNERĪBA
SĒLIJA

20



Daugavpils un Ilūkstes
novadu partnerība
„Kaimiņi”

Local Action Group “Neighbors” (further LAG) is working in Daugavpils and Ilukste regions, with common area 2525 km². The year of foundation is 2003 and already 14 years we are realizing assigned aims and mission. Our LAG is made up of public and private partners from the rural territory – local authorities, active local inhabitants, nongovernmental organizations and initiative people

STRATEGIC GOALS

Our LAG aim is to raise Daugavpils and Ilukste region's development. LAG's strategy has set up on family and local inhabitant's traditions to support and facilitate Local Action Communities.

Vision

Family-oriented development of local inhabitants in Daugavpils and Ilukste regions' rousing environment, advanced entrepreneurship, powerful local communities with multicultural identity.

STRATEGIC GOALS

LOCAL ECONOMIC GROWTH AND STARTING LOCAL ENTREPRENEURSHIPS IN LOYAL ENVIRONMENT

- To support micro, small and middle-sized entrepreneurship development
- To support local environment development or improvement, which increases local products sales
- To support for employer's competencies and increase of productivity

LOCAL AREAS CAPACITY DEVELOPMENT, INSURANCE OF QUALITATIVE LIFE, NATURE AND CULTURAL RESOURCES PRESERVING AND SUSTAINABLE UTILIZATION

To support initiatives, directed on effective and sustainable nature and culture resources utilization to rise the quality of living conditions



EXPERIENCE OF TNC

Our collaboration partners are Finland, Sweden, Estonia and Lithuania. Our cooperation included LAG's priority themes in the terms of common interest

CONTACTS



INGA KREKELE



www.daugavpils.partneribas.lv



inga.krekele@gmail.com



+371 29184640



Daugavpils, 25 Selijas Str.,
room. 305, Latvia

TRANSNATIONAL COOPERATION

Possible collaboration directions during period 2014–2020

- The priority themes are cultural cooperation (cultural and traditional heritage preservation), adding value to local products, in particular, by facilitating access to markets for small production units via collective actions and improving the quality of life in rural areas for young inhabitants, enhancing the value of sites of local communities

21



STRATEGIC GOALS

Kraslava District partnership community-led local development strategy 2015 to 2020:

- the main objectives and tasks are to provide support to local initiatives, enhancing the sustainability of local development initiatives, improving the social situation in the countryside, creating a favorable environment for living, business and development of rural areas

Association «Kraslava District Partnership» or the local action group (LAG) is established in 2006. with the aim to promote sustainable social and economic development Aglona (Skeltova, Graveru Kastulinas parishes), Dagda and Kraslava counties, involving organizations and people at local level in addressing the needs

The 2009th to 2014, thanks to LEADER Aglona, Dagda and Kraslava counties were created in a modern and safe playgrounds, improved quality of cultural activities and accessibility for people with special needs, a new generation of social services, creating opportunities for high quality leisure and acquire computer aided design of furniture, photographs, technical sciences, ancient crafts and other areas





EXPERIENCE OF TNC

In 2013 realized cooperation project with Lithuanian and Latvian LAG «Local identity product development through innovative marketing rural tourism»

CONTACTS



AINA DZALBE



www.kraslavaspartneriba.lv



kraslavaspartneriba@inbox.lv



+371 26195753



7 Skolas Str., Kraslava, LV-5601,
Latvia

TRANSNATIONAL COOPERATION

Possible collaboration directions during period 2014–2020

- Tourism and culinary heritage
- Develop entrepreneurship (social-entrepreneurship) and establish contacts
- Reduce youth departure from rural areas
- Save the environment and promote natural object recognition

22



**PREIĻU RAJONA
PARTNERĪBA**

It all began in 2006 when Preiļi municipality was reached by the information of the possibility to participate in the acquisition of EU funding for rural development through LEADER approach. With the insistence of initiative and responsible people, the union «Partnership of Preiļi Municipality» was found on May 30 uniting local authorities, entrepreneurs and the nongovernmental sector, as well as being an organization that would research and summarize the needs of the local society, give the opportunity and help acquire the funding, and fulfil the VISION: «the territory of the Partnership of Preiļi municipality is a green, enticing and available place where one finds the most beautiful dolls, the most delicious cheese and bread, and welcoming and hard-working people living in peace with themselves». At the moment, the union is represented by 40 members, including 5 local authorities, 11 entrepreneurship and 24 nongovernmental organizations. The LAG territory has remained unaffected in the past 10 years – that is, the former Preiļi district, the current municipalities of Preiļi, Varkava and Riebini, Aglona parish

STRATEGIC GOALS

In order to fulfil the VISION of the strategy, an Action Plan with 2 strategical objectives has been developed

WORK and ENTREPREURSHIP

- The promotion of economic activities – 3 activities supporting the development of products and services, the private initiatives contributing to entrepreneurship and employee training

STRATEGIC GOALS

LIVING

- The promotion of social activities – 3 activities supporting informal, social care, health services, cultural, sport, recreational and free time services and the availability of environment



EXPERIENCE OF TNC

In cooperation with Lithuanian partners, the international project “The development of local identity products using innovative marketing in rural tourism” was implemented and represented by 5 partners: two LAG from Lithuania (LAG of Traki and LAG of Zarasai district municipality) and three LAG from Latvia. LAG is a cooperation partner in the project «Support of the regional development of the northern area of Republic of Moldova and promotion of business through the development of local partnerships»

Taking into consideration the experience LAG has gained in such events, it is necessary to continue them

CONTACTS



VALIJA VAIVODE



www.preilupartneriba.lv



preilupartneriba@inbox.lv



+371 22026684



Preili municipality, Preili,
Tirgus laukums 1, LV5301, Latvia

TRANSNATIONAL COOPERATION

Possible collaboration directions during
period 2014–2020

Interstate cooperation will have a crucial role in a successful living space development of any territory. Higher significance should be paid to the fact that the priority is given to those offered services the use of which would make them attractive to the citizens of other territories and states, thus advancing the future possibilities of selling the services.

Cooperation topics – domestic industry, tourism, youth, culture...

23



RĒZEKNES RAJONA
KOPIENU PARTNERĪBA

The Community Partnership of Rezekne Region (Rezekne Partnership) is an Association bringing together legal entities and natural persons from the business, governmental and non-governmental sectors in Rezekne and Vilani Municipalities in order to enhance sustainable economic and social welfare. The objective of Rezekne Partnership is to improve the quality of life for the local inhabitants

STRATEGIC GOALS

DEVELOPED MULTISECTORAL ENTREPRENEURSHIP

- Facilitation of business start-up and development

HIGH-QUALITY AND IMPROVED LIVING ENVIRONMENT

- Preserved and promoted cultural, historical and natural heritage, developed public infrastructure
- Development of the inhabitants' initiatives and lifelong learning
- Development of social services





TRANSNATIONAL COOPERATION

Possible collaboration directions during period 2014–2020

- Development of integrated touristic offers
- Increasing the sales of local craftsmen and outworkers production
- Experience exchange between rural communities
- Development of innovations for employment promotion

CONTACTS



INETA ELKSNE



www.rezeknespartneriba.lv



info@rezeknespartneriba.lv



+371 64607183, +371 26363497



95A Atbrivosanas aleja, Rezekne,
LV-4601, Latvia



EXPERIENCE OF TNC

Collaboration agreement with Finland
(encouragement of economic and social activities)

24

LUDZAS RAJONA PARTNERĪBA

Association act as a local action group from 2006

“Ludza District partnership” territory of activities are districts of Cibla, Karsava, Ludza and Zilupe municipalities

Brings together representatives from various sectors involved in rural development, local organizations and rural population interest groups

Development strategy of the action territory (economic, social improvements and opportunities for preservation of the environment) – preparation and realization through implementation of open project competitions, announcing calls for project proposals on a regular basis

STRATEGIC GOALS

- Development of business activities / strengthening initiatives of local economic, including the processing of agricultural products, development of home produced and crafts in connection with tourism and preservation of cultural heritage
- Diversification of public activities / development of initiatives of local area potential, including preservation of the environment and nature resources





CONTACTS



SANDRA PALMA



ludzaspartneriba@apollo.lv



+371 29413335



16-418 Raina Str., Ludza,
Ludza municipality, LV-5717, Latvia

EXPERIENCE OF TNC

We have previous cooperation experience with Local action group Rokiski from Lithuania in such scope as cultural heritage, home producing and crafts

TRANSNATIONAL COOPERATION

Possible collaboration directions during period 2014-2020

- Development of business activities
- Diversification of public activities

25



MADONAS NOVADA FONDS

STRATEGIC GOALS

Strategy is focused on activity of local inhabitants and cooperation with aim to strengthen local economic and life quality, creation of the living environmental which is social active and developing.

- Support for entrepreneurship, specially for new entrepreneurs

Foundation «Madona Municipality Fund»
established in 2006.

Local development strategy is implemented in
5 administrative territories – Cesvaine, Ergli,
Lubana, Madona and Varaklani district

STRATEGIC GOALS

- Support for the processing of products which are made in local territory
- Support for small local food producers
- In case if there is a projects for social benefit we are giving
- Support for preservation of cultural and nature values
- Support for development of the social activities



EXPERIENCE OF TNC

LEADER Trans-national Cooperation Project
Agreement «ABC for local producer»

Latvia, Lithuania, Czech Republic

TRANSNATIONAL COOPERATION

Possible collaboration directions during
period 2014–2020

- Development and creation of the nonagricultural producing and services
- Promotion of the agricultural product producing
- Added value to local products
- Support for services of rural tourism, creation and development of the new tourism programs

CONTACTS



JOGITA BAUNE



www.mnf.lv



jogitabaune@inbox.lv



+371 27527343



1 Poruka Str., Madona,
Madona district, LV-4801, Latvia



TRANSNATIONAL COOPERATION

- The arrangement of cultural and historical monuments and nature objects
- The arrangement of local territory for local culture, social activities and sport infrastructure
- Promotion of the qualitative and available social services for local inhabitants

Foundation «Madona Municipality Fund» is open
for cooperation offers.

26



B A L V U
R A J O N A
P A R T N E R Ī B A

Association «Balvi District Partnership» is a local action group, which brings together local non-governmental organizations, local authorities, entrepreneurs and individuals. Operation of the partnership area is the former Balvi district territory, which now combines Balvi, Vilaka, Baltinava and Rugaji.

The association was founded in 2003 and it is one of the oldest Latvian action groups.

STRATEGIC GOALS

- TO PROMOTE ECONOMIC DEVELOPMENT IN NORTHERN
- ENCOURAGE RESIDENTS AN ATTRACTIVE LIVING ENVIRONMENT FOR CIVIL SOCIETY ACTIVITIES

Action 1.1. Mikro and small business formation and development, including tourism industry

Action 1.2. Support for domestic producers and craftsmen economic activity

Action 2.1. The local area, including natural and cultural heritage sites, arranging access to services, quality and attainability

STRATEGIC GOALS

Action 2.2. Improvement of the historic center in Baltinava

Action 2.3. Nature Park «Balkan Mountains» tourist and sports offer improvement

Action 2.4. Rugaji open-air stages renovation and its surroundings improvement

Action 2.5. Architectural monument «Berzu cemetery mortuary» restoration

Action 2.6. Public activities diversification of the local population

Action 2.7. An intangible cultural value preservation and promotion

EXPERIENCE OF TNC

From January 4, 2010 to November 3, 2010 was realized the project «Get to know the seasons through traditional cultural activities in Balvi and Kelme areas».

The lead partner was an organization «Balvi District Partnership» and project partner is the Kelme Partnership Local Action Group.

The total project budget is 26,995,00 EUR.

The project aimed to develop cross-border cooperation networks between local communities, strengthening cultural traditions, making them to develop the living environment more attractive in Balvi and Kelme areas.

EXPERIENCE OF TNC

In 2013 and 2014 the association «Balvi District Partnership» signed an agreement with the Dutch fund KNHM and implemented the project tendering active population in northern.

The competition aims to improve the quality of life of residents in Balvi, Baltinava, Rugaji and Vilaka areas by supporting private initiative of citizens to submit redevelopment projects in the environment, sports, culture, education and other areas.

CONTACTS



ILZE DAUKSTE



www.balvi.partneribas.lv



balvurajpartneriba@gmail.com



+371 27070899



1 Tautas St., Balvi, LV-4501, Latvia

TRANSNATIONAL COOPERATION

Possible collaboration directions during period 2014–2020

Association "Balvi District Partnership" would be interested in the implementation of projects related to the promotion of cultural values and conservation. Also topical international project topics would be in the field of tourism and strengthening the local economy. For a cooperation partner perhaps choosing Estonia, as the population in the discussions have recognized that they would like to collaborate directly with Estonia. While not excluding the possibility to cooperate with Lithuania and other EU countries, if there where would be an opportunity to receive an offer to cooperate.

27



STRATEGICAL AIMS

Economically and socially active area where the creation of an appropriate environment for creative and professional goals – innovative manufacturing companies, high-quality services, diversified agricultural production and processing, maintenance of cultural and historical monuments, attractive rural and urban landscape, an active social life, provided social inclusion – the basis for living, working, recreation and increasing of the quality of life for each family and the whole territory.

Strategic goals:

- To promote sustainable and productive micro (small) and small business development in the partnership area
- To promote the quality of the living environment development, the development of civil society and citizens, activities of the association

The Association «SATEKA» was established
on May 23, 2005

Local development strategy is implemented in one
administrative territory

Total area: 1872 km²

Population: 23000 (01.01.2016.)

54.2% of the territory is forest, 34.6% the utilized agricultural
area. The most important economic sectors are
woodworking, logging, agriculture

On 1 September in 2016 association have 53 members –
1 municipality, 8 parishes and 1 city administration,
23 associations, 6 entrepreneurs and 9 individuals





EXPERIENCE OF TNC

In the previous planning period SATEKA had engaged in 2 international cooperation projects with LAGs from Lithuania, Czech Republic and Latvia

CONTACTS



DAIGA GARGURNE



www.sateka.lv



sateka@sateka.lv, daiga@sateka.lv



+371 29177019, +371 26330257



17 Abelu Str., Gulbene,
Gulbene municipality, LV-4401, Latvia

TRANSNATIONAL COOPERATION

Possible collaboration directions during
period 2014–2020

- Entrepreneurship
- Adding value to local products, in particular, by facilitating access to markets for small production units via collective actions
- Cultural cooperation (cultural and traditional heritage preservation)
- For tourism development – a joint tourism product development through enhanced access to information – information exchange networks
- To promote co-operation between small rural schools – multi-center
- Youth Promoting cooperation activities
- Cooperation between small rural museums, local history exhibition holders

28



STRATEGICAL AIMS

The territory of Aluksne rural partnership develops based on LOCAL RESOURCES and VALUES, by creating INOVATIVE SOLUTIONS providing to use COMPETITIVE ADVANTAGES of territory.

Strategic goals:

- On local values based culture, sport and leisure
- On local needs based living environment (included: recreation territories and objects of cultural heritage)
- On local resources and competitive advantages based economic (included: production, tourism, processing, services, and markets)

Association «Aluksne rural partnership» is founded on 20 September 2006

The Aim: to promote sustainable development of territory and to improve the quality of life

The members (01.09.2016) – 2 municipalities, 3 enterprises, 11 NGOs, 8 individuals.

Associate members – 4 NGOs, 1 individual

Total area: 1963,67 km²

Population: 19 743 (01.07.2016)

Area of activity: Aluksne Municipality (town of Aluksne and 15 Rural Territories) and partly Ape Municipality (town of Ape, Ape Rural Territory, Trapene Rural Territory)

The area is ordered with Estonia and Russia





EXPERIENCE OF TNC

Association has established cooperation with LAGs from Finland – YHYRES and SUUPOHJA. The TNC project “START SMART” was submitted, but it wasn’t approved in Latvian side. The main goal: Create the system of support for development of rural (natural) tourism in our territories.

We have still good contact between our LAGs and we are still looking for the new possibilities to cooperate.

CONTACTS



SANTA HARJO-OZOLINA



www.aluksnespartneriba.lv



santa.harjoozolina@gmail.com



+371 26330477



8a Darza Str., Aluksne,
Aluksnes district, LV-4301, Latvia

TRANSNATIONAL COOPERATION

Possible collaboration directions during period 2014–2020

- Territory development – how survive in this process of globalization and centralization. Depopulation and instable economy in rural area. New common ideas, new common solutions!
- Tourism – nature tourism, active tourism, sport tourism, culture tourism, and rural tourism. Marketing activities.
- Traditions and historical heritage.
- On local resources based business.

29



Association "Abula Rural Partnership" is situated in the North-East of Latvia. It was founded in 2006

Local development strategy is implemented in 7 administrative territories (Bilska, Blome, Branti, Launkalne, Palsmane, Smiltene, Varini and Smiltene City), covering approximate 12 500 inhabitants

Total area 816.6 km²

EXPERIENCE OF TNC

Project "Travelling Art Exhibition of the Baltic States"
Cooperation partners was Local Action Group of Mazeikiu (Lithuania) "Siaures Vakaru Lietuvos vietos veiklos grupe"

The aim of the project was to develop cooperation between local inhabitants in Lithuanian and Latvian LAG's, by promoting implementation of the cultural, academical and social events in the Baltic States

STRATEGIC GOALS

STRENGTHEN INITIATIVES OF LOCAL ECONOMICS

- To improve competitiveness of a small entrepreneurs
- The popularization and availability of local products

DEVELOPMENT OF THE LOCAL TERRITORY POTENTIAL

- Improvement of the local territory
- Preservation of the cultural and historical heritage
- Diversification of the public activities for local inhabitants



TRANSNATIONAL COOPERATION

The aims for our international cooperation are :

- To promote cooperation of the local inhabitants on the national and international level, to contribute a qualitative transfer and acquisition of the actual problem solving experience for local inhabitants
- Implementation of the new and innovative cooperation ideas, to contribute entrepreneurship and employment opportunities in local territory

CONTACTS



SVETLANA ROZITE



www.abulas.lv



abulas_lp@inbox.lv



+371 28368431



9 Cesu Str., Blomes parish,
Smiltene municipality, LV-4707, Latvia

TRANSNATIONAL COOPERATION

Possible collaboration directions during
period 2014–2020

- Popularization of the local products
- Development, implementation, popularization of the permaculture
- Development and improvement of a common rural tourism route
- Improvement, popularization and marketing of the ancient handicraft abilities
- Improvement of possibilities to organize cultural and art activities for local inhabitants

30



Cēsu
rajona lauku
partnerība

Cesis District Rural Partnership is a non-governmental cooperation organisation which is founded on 8th August, 2006. CDRP actively works on development of the activity territory and encourages and supports the local community initiatives. The partnership is located at the northeastern part of Latvia, 90 km from the capital – Riga. CDRP has prepared a local development strategy 2015–2020 and the strategy is being carried out at 8 municipalities – Cesis (Vaive) Līgatne, Pargauja (Raiskums), Rauna, Priekule, Jaunpiebalga, Vecpiebalga, Amata. The partnership unites 8 municipalities' self-governments, non-governmental organisations, entrepreneurs and local communities

STRATEGIC GOALS

TO PROMOTE A SUSTAINABLE ECONOMIC GROWTH AND AN ECONOMIC DIVERSIFICATION AT THE LOCAL LEVEL

A creation and development of enterprises (micro and small-sized)

An improvement of local business environment that promotes the sale of the local production

TO PROMOTE THE IMPROVEMENT OF LIVING CONDITIONS AND THE DEVELOPMENT OF ACTIVE LOCAL COMMUNITIES

An improvement of local territory and local facilities in order to foster availability, quality and accessibility of services

A diversification of local activities





EXPERIENCE OF TNC

In the previous planning period CDRP took part at 3 international cooperation projects and together with the partners from Czech Republic, Estonia and Lithuania carried out following projects – a promotion of free-time activities for young people; a preservation of the cultural heritage and traditions so they could be passed on to the future generations; a knowledge exchange with partners from the other countries about fostering the entrepreneurship

CONTACTS



DACE MELGALVE



www.partneriba.lv



cesis@partneriba.lv



+371 29467509



8 J. Poruka Str., Cesis, Latvia

TRANSNATIONAL COOPERATION

Possible collaboration directions during period 2014–2020

- Facilitated the sale of the local products at the international level, creation of common tourism products
- The development of the information exchange networks, improvement of their accessibility. The transmission of cultural heritage to younger generations
- The promotion and development of cooperation with different target groups such as young people, older people, females, disabled persons etc, camps

31



The local action group “Lauku partnerība ZIEMELGAUJA” was established in September 2006. The territory is located in North-East of Latvia and covers parishes of six municipalities: Ape municipality (Gaujiena and Viesī parishes), Beverīna municipality (Brenģuli, Kauguri and Trikata parishes), Burtnieki municipality (Evele parish), Smiltene municipality (Grundzāle parish), Strenči municipality (towns of Strenči and Seda, Plāni and Jerceņi parishes), Valka municipality (town of Valka, Vijciems, Ergeme, Zvartava and Valka parishes). Its members are municipalities (6), NGOs (16), enterprises (9) and individuals (12). The area is rich in nature resources. The uniting object is the Gauja River that flows through the territory.

STRATEGIC GOALS

SUPPORT TO DEVELOPMENT OF LOCAL ECONOMICS

- Creation of new products and development of the existing ones
- Creation of new services and development of the existing ones
- Promotion of local products into the market

STRATEGIC GOALS

DEVELOPMENT OF QUALITATIVE HABITAT ENVIRONMENT

- Improvement of environment
- Meaningful free-time activities
- Cherishing culture and traditions



EXPERIENCE OF TNC

Its members (municipalities) that are located in border areas have co-operation experience with Estonia in different fields

LAG itself has no experience

CONTACTS



LINDA KRUMINA, DAGNIJA UDRE



www.zgauja.lv



ziemelgauja@gmail.com



+371 29431271, +371 29219477



16 Valkas Str., Strenci,
Strencu district, LV-4730, Latvia

TRANSNATIONAL COOPERATION

Possible collaboration directions during period 2014–2020

- Development of tourism in the Gauja River area
- Sustainable use of protected nature areas
- Promotion of small entrepreneurship
- Diversification of free-time activities
- Promotion of LAG activities

32



The society was founded on 17 August 2006.

Its area of activity is the Northeast part of Latvia – Ziemeļvidzeme. The area of partnership embraces seventeen administrative units (3 towns, 14 rural territories – parishes) of five municipalities. The area covers the towns of Aloja and Staicele, the rural territories of Aloja, Braslava, Brivzemnieki and Staicele of Aloja Municipality, the rural territories of Dikli, Zilaiskalns and Vaidava of Koceni Municipality, the rural territory of Ledurga of Krimulda Municipality, Limbazi town, the rural territories of Katvari, Umurga, Vidriži and Limbazi of Limbazi Municipality, and the rural territories of Straupe and Stalbe of Pargauja Municipality.

Land area – 2016.61 km² Population – 26,746

STRATEGIC GOALS

The goal of the society: Promoting the development of rural territory, conservation of natural and cultural heritage resources and using them to improve quality of life.

The priority axis put forward by the “Brasla” Vidzeme Rural Partnership Society for local development 2014/2020 strategy:

STRENGTHENING LOCAL ECONOMIC INITIATIVES

- New product and service creation, development and sales promotion

STRATEGIC GOALS

- Processing of agricultural products (including home), product design and sales promotion
- Local production of trade creation, improvement, introduction of a new type of sale

SPOT POTENTIAL DEVELOPMENT INITIATIVES

- Environmental improvement of access to services and improve the quality of
- Local public activities diversification and capacity building



EXPERIENCE OF TNC

Previous cooperation experience the 2 Czech Republic, 2 Lithuania, 5 Latvian LAG – “ABC Local producers”. Improve system of local producers and support products on the basis of knowledge and best practices between countries

CONTACTS



LIGA KARKLINA



www.brasla.lv



Liga@brasla.lv



+371 26137342



2 Braslas Str., Straupe,
Pargaujas district, LV-4152, Latvia

TRANSNATIONAL COOPERATION

Possible collaboration directions during period 2014–2020

Strengthening cross-border cooperation with Estonia through integrated spatial development according to the priorities set by local communities and supporting targeted cooperation in the region of the Baltic Sea countries, more widely across the European Union by promotion of exchange of know-how and experience and by advancing the export of goods and services

33



STRATEGICAL AIMS

Society vision – populate and developed countryside of Latvia

The main goal is to help to increase the competitiveness of the Valmiera district in the entrepreneurship, sport and cultural areas

The main task is to reach the goal through LEADER activities and financing

Society «From Salaca to Ruja» established at 2006

Establishers – 18 local municipalities (in the past Valmiera district area), rural entrepreneurs and NGO

In fact Society activities are focused on and are available for interested in Valmiera district area





EXPERIENCE OF TNC

- Lithuania – LEADER Action group in Kauna – collaboration within entrepreneurship and local tourism activities
- Estonia – LEADER Action group in Parnu – collaboration within local tourism activities development

CONTACTS



VIZMA VASERE



www.nosalacaslidzrujai.lv



vizma60@gmail.com



+371 29148024



9 Murmuizas Str., Valmiera,
LV-4201, Latvia

TRANSNATIONAL COOPERATION

Possible collaboration directions during
period 2014–2020

- Home-produced food and crafts
- Innovative and untraditional entrepreneurship for youth
- Arrange and make more available for any interested the cultural and historical objects

34



STRATEGICAL AIMS

Activity ELFLA No. 1 The establishment and development of entities

Activity ELFLA No. 2 The promotion of sales of goods, the diversity of the companies and the improvement of the quality

Activity ELFLA No. 3 The improvement of the local environment; recreation; effective exploitation of the labour resources

Activity ELFLA No. 4 Preservation of historical heritage

The organisation «Jurkante» was founded in 2008

The members of the organisation: entrepreneurs as well as NGOs and municipal organisations

The organisation operates in Salacgrīva District and also in a part of the territory of Limbazi District (Pale, Vilkenē and Skulte)

STRATEGIC GOALS

Activity EJZF No. 1 The development of fish farming companies the diversity of the business activity and the reduction of the season factor

Activity EJZF No. 2 The support for the increase of the environmental resources and the reduction of the climate change effect within the territory

Activity EJZF No. 3 The development of the infrastructure of the fish farming territories and historical heritage



EXPERIENCE OF TNC

Ancient trades nowadays with Lithuanian VRG

As well as Estonia (Pernu, Kapsala, Hijuma)

The topic of the tourism attraction – the late demons, the Estonian party ran out of the funds, though

CONTACTS



SANDIJA KAULINA



jurkante.lv



sandija@jurkante.lv



+371 64071985



9 Smilsu Str., Salacgriva,
Salacgriva District, LV-4033, Latvia

TRANSNATIONAL COOPERATION

Possible collaboration directions during
period 2014–2020

- Development of coastal tourism
- The field of the business activity – innovations
- Education of youth
- Preservation of the traditions of the historical heritage
- Innovations in fish farming

35



PUBLISKO UN PRIVĀTO
PARTNERATTIECĪBU BIEDRĪBA
"SERNIKON"

Public and Private Partnership Association "Sernikon" area is located in the metropolitan area of the capital of Latvia, Riga, and it includes Carnikava and Saulkrasti municipalities. At the moment there are 45 members in Partnership, representing municipalities, entrepreneurs, NGOs and individuals. The main element that characterizes the area is 35 km long coastline which is rich in its biodiversity therefore most of it is included in Natural Park "Piejūra". All these elements together offers great potential for the development of sectors such as tourism and business. LAG is officially registered NGO and our goal is to help local community to develop territory of 2 municipality

STRATEGIC GOALS

- Promote micro, small and medium enterprise creation and development, especially in the tourism sector
- Support the development of civil society by providing support for the citizens associations activities
- Support the development of public infrastructure in villages and neighborhoods

STRATEGIC GOALS

- Strengthen the fisheries sector, in particular to support activities that mitigates impact of seasonality
- Integrate the fisheries sector and the available natural resources into tourism services, as well as to preserve the cultural heritage
- Support for fisheries sector necessary coastline infrastructure development



EXPERIENCE OF TNC

The association did not have the international experience of cooperation in the previous period. But for now association has already signed memoranda of cooperation with Estonian and Finnish LAGs

CONTACTS



ZANE SERZANTE



www.sernikon.lv



zane.serzante@carnikava.lv



+371 26121424



7 Stacijas Str., Carnikava, Latvija

TRANSNATIONAL COOPERATION

Possible collaboration directions during period 2014–2020

- Cooperation projects for tourism development
- International cooperation projects in the fisheries sector
- Community and village development projects

- 1** Association «Northern Kurzeme Business Association»
- 2** Association «Talsu District Partnership»
- 3** Association «Lets do it ourselves!»
- 4** Association «Liepaja District Partnership»
- 5** Saldus District Development Association
- 6** Association «Kandava Partnership»
- 7** Association «Partnership for Country and Sea»
- 8** Association «Dobele District Rural Partnership»
- 9** Association «Rural Partnership ««Lielupe»»
- 10** Association «Bauska District Rural Partnership»
- 11** Association «Pieriga Partnership»
- 12** Association «Partnership «Daugavkrasts»»
- 13** Association «Stopinu and Salaspils Partnership»
- 14** Association «Ropazi, Garkalne Partnership»
- 15** Association «Gaujas Partnership»
- 16** Riga District Rural Development Association
- 17** Public and Private Partnership Association «Land in Bloom»
- 18** Association «Aizkraukle District Partnership»
- 19** Association «Rural Partnership «Selija»»
- 20** Association «Daugavpils and Ilukste Municipality's Partnership «Kaimini»»
- 21** Association «Kraslavas District Partnership»
- 22** Association «Preilu District Partnership»
- 23** Association «Rezekne District communities Partnership»
- 24** Association «Ludza District Partnership»
- 25** Foundation «Madona Municipality Fund»
- 26** Association «Balvu District Partnership»
- 27** Association «Sateka»
- 28** Association «Aluksne Rural Partnership»
- 29** Association «Abula Rural Partnership»
- 30** Association «Cesis District Rural Partnership»
- 31** Association «Rural Partnership ««Ziemeļgauja»»
- 32** Association «Vidzeme Rural Partnership ««Brasla»»
- 33** Association «From Salaca till Ruja»
- 34** Association «Jurkante»
- 35** Public and Private Partnership Association «Sernikon»

Ltd „Latvian Rural Advisory and Training Centre“ Latvian Rural Network

34 Rigas Str., Ozolnieki, Ozolnieku parish, Ozolnieku district, LV-3018

Phone: +371 63007559, +371 63007558; fax: +371 63022264

E-mail: laukutikls@llkc.lv

Web page: WWW.LAUKUTIKLS.LV WWW.LLKC.LV